

# PresenterWall

POWERED BY Smart-**AM**



## Expandable Video Wall System

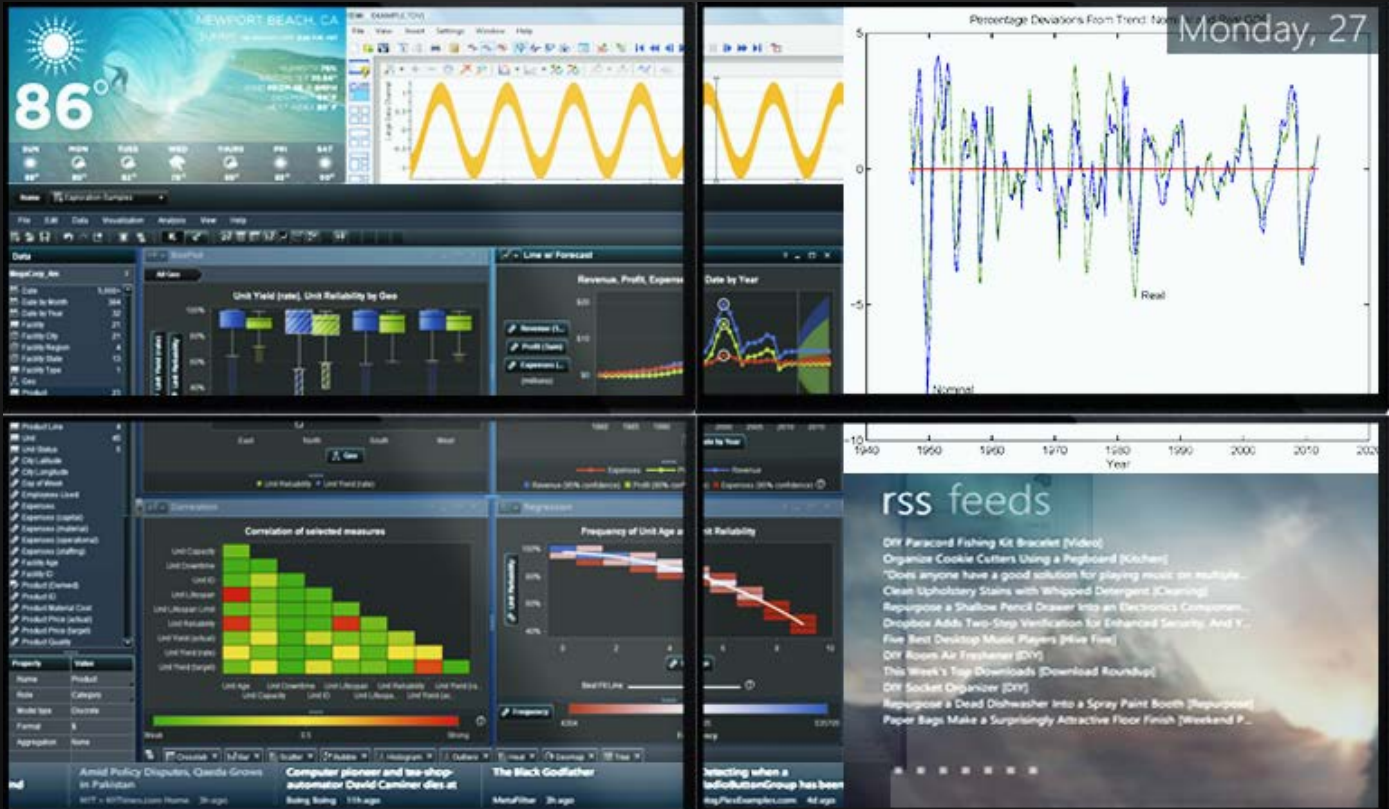
High Definition Video Wall System With No Limitation On Size,  
Arrangement Or Content That Can Be Managed Easily Over The Internet

Shouldn't you be able to have incredible creative control over what your video wall and digital signage can show? PresenterWall allows you to present content in the most unique and customizable way of any video wall on the market by allowing you to include as many different visual elements as you want in any arrangement you can imagine.

We are now entering the world of possibilities.

Manage live HTML 5 widgets within any of PresenterWall's customizable zones.

Crystal clear 1080p HD video quality with desktop sharing capabilities.



Stay informed by adding a live news ticker with news from your company or favorite news site.

RSS feed display capabilities.

Easy to set up and manage over the Internet. PresenterWall is fully customizable to meet your business needs. Run multiple widgets and screens at once!

# How Will You Use PresenterWall?

Let's imagine the different ways that PresenterWall can supercharge your visual communication to customers and employees alike.

## Airports

Whether you are advertising or trying to direct travelers to their correct flight, you need a digital signage system that will allow you have dynamically changing content presented in a way that is both attractive and easily organized.



## Malls

Large retail malls are the wild west of advertisement. How are you going to stand out and catch the attention of your customers among the thousand stores that are trying to grab their attention? The answer is simple. PresenterWall.



## Control Rooms

Don't make the job of your security team harder than it already is by providing them with inferior tools. PresenterWall is the simplest way to set up a video surveillance control room with screens large enough for your security team to actually catch risks before they arise.



## Schools, Colleges, and Universities

Looking to create a deeper connection with the student body at your school? Want to make sure everyone is up to date on upcoming events and activities? Why not set up a simple and easy to use PresenterWall in the quad? You'll be able to simultaneously entertain, educate and connect with your student body.



## Mass Video Conferencing

Offices in Dubai, Tokyo, Moscow, Buenos Aires, San Francisco and London? You need to make sure your team can communicate effectively. Use PresenterWall for mass video conferencing where you can actually see everyone as clearly as if they were right there.



## Casinos

You work hard on creating a space where people can be entertained and let loose for a while. Casinos are places of beauty and style, so bring even more beauty and style to your casino with the visual engagement of PresenterWall.



## Corporate Lobbies

People make decisions about your business in the very first seconds of entering your office. Make sure they're impressed from the very first glance. PresenterWall can be used to create engaging corporate presentations to run in the lobby of your office, so the deal is sealed before a client even enters the meeting.



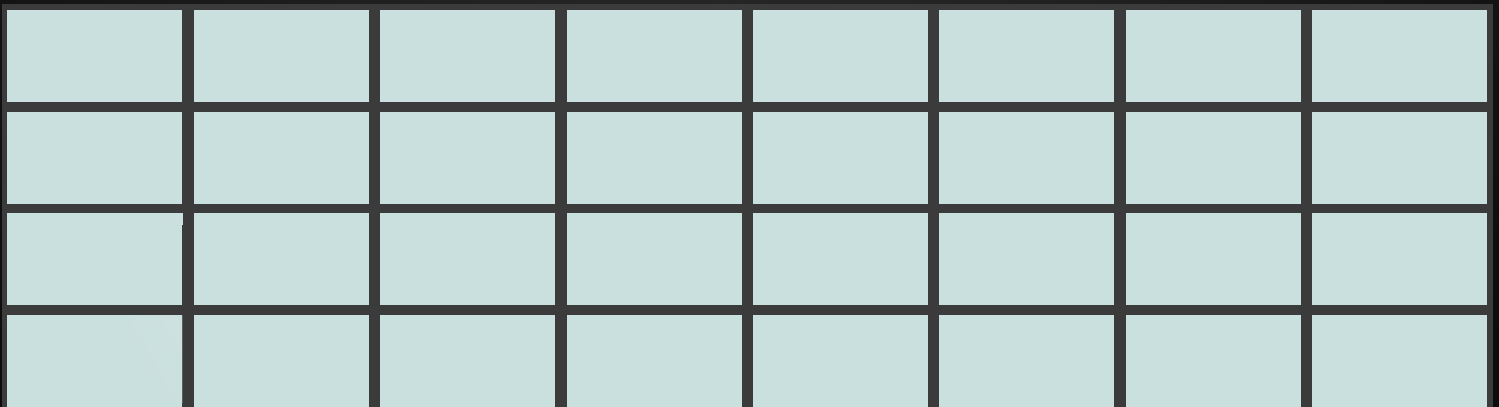
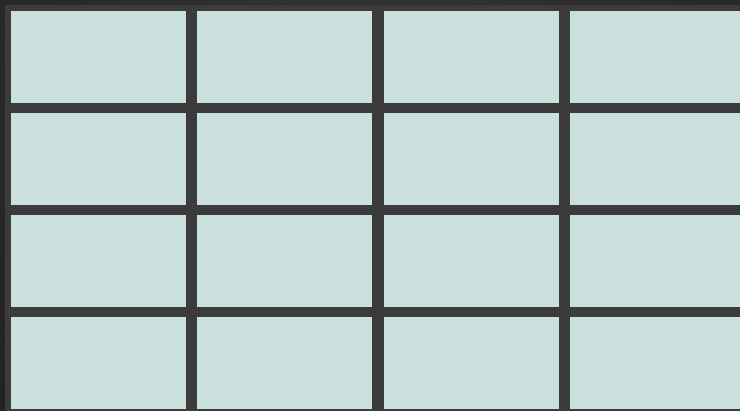
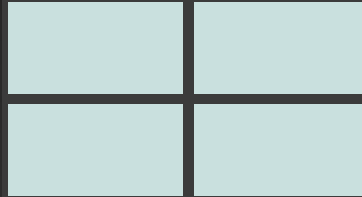
## Restaurants

Imagine a sizzling steak or a tasty cocktail displayed on a beautiful video wall or digital signage in your restaurant whetting your customer's appetite from the moment they arrive. Inspire your customer's imagination and appetite and they'll order more food and keep coming back to your restaurant for years.



# ***PresenterWall Expands to Meet Your Video Wall Needs***

With PresenterWall, you have the option to use 4, 9, 12, 16, or 32 screens.\* In any vertical or horizontal arrangement you desire.



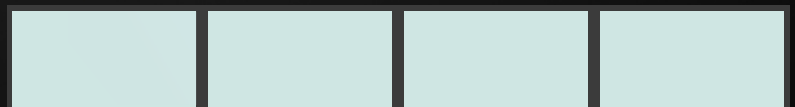
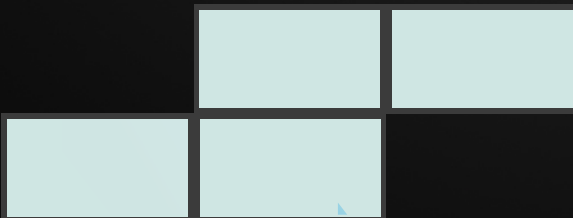
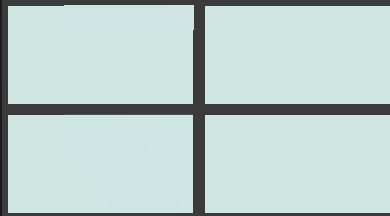
\*up to 128 screens can be used (upon special order through SmartAVI)

# ***What Media Does The PresenterWall Support?***

PresenterWall supports your existing media, so you don't have to do anything fancy to create content for your video wall or digital signage display. Just load in any of the following elements as is and you've already begun to create a unique visual experience.

- HD Video (MPEG/AVI)
- Excel
- PowerPoint
- PDF
- HTML
- Flash
- QuickTime
- RSS News Feeds
- HTML5 Widgets
- Multi-Layout Capabilities
- Images (JPEG/GIF)
- Image Backgrounds

# ***Arrange Your Screens in Any Way You Like***



Thanks to the versatility of PresenterWall, you are able to change the layout of your displays on the fly.

# PresenterWall is...

## Instantly Eye-Catching



Customers Can't Look Away

## Alive With Vivid Color



Run 1080p HDTV Resolution Video Or Looping Slideshows

## Unique



Make It Fit Your Brand With Fully Customizable Display Templates

## Fully Automatic



Your Display Will Run Content Automatically According To Schedules You Make So It's No Hassle.

## Monetizable



Make More Profits By Selling Advertising Space On Your Video Wall Or Digital Signage

## Flexible



Need To Change Something Immediately? Easily Update Your Display's Content Over The Internet

## Intuitive



You Don't Need A PhD To Use It. Learn How To Use All Features Like A Pro In No Time

## Fully Operational



It's Plug And Play So You Can Install It In A Day!

# Easy To Use: *Just 1 - 2 - 3*



## Choose Your Content

Remember you can get started right away because PresenterWall supports your pre-existing content.



## Customize Your Layout

You have complete freedom with your video wall or digital signage layout, so feel free to try anything. If you're in a rush, PresenterWall comes with many time-tested layout templates that you can easily plug your content into.



## Schedule The Experience

Have your content show up exactly when and how you want. With our software, you can coordinate every bit of content to a time of day, a day of the week or any other time frame you desire.

# ***PresenterWall Runs Videos In 4K Ultra HD***

Is 1080p HD not high definition enough for you? PresenterWall can run a video resolution format known as 4k Ultra HD that has 4 times as much detail as 1080p HD. So if your video needs to be super clear, vibrant, and beautiful across all your video wall screens, PresenterWall can do that.



# ***PresenterWall Runs Multiple HD Videos***

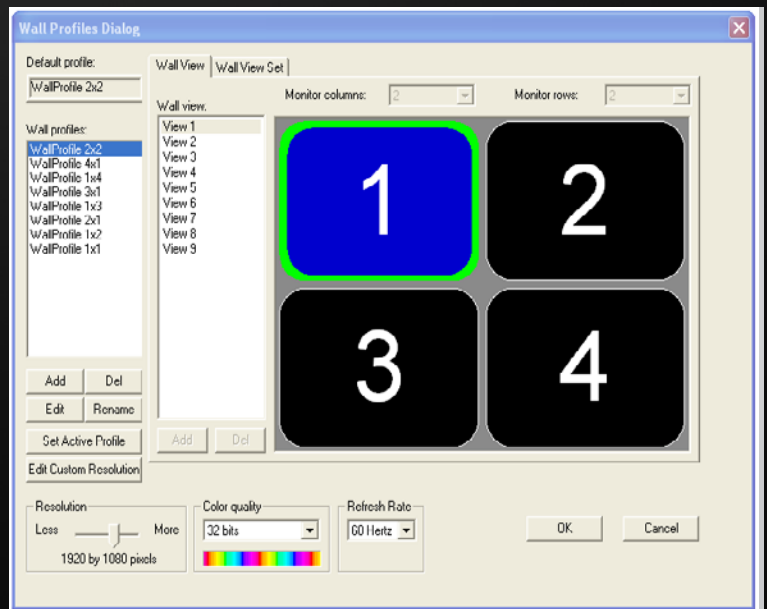
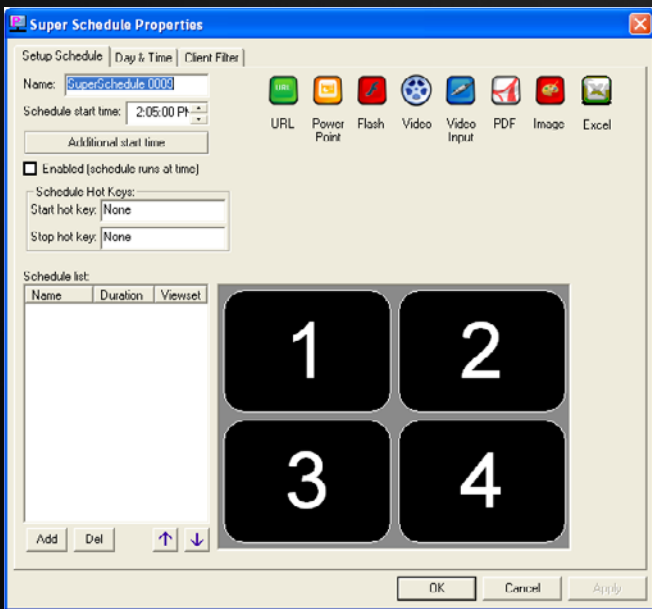
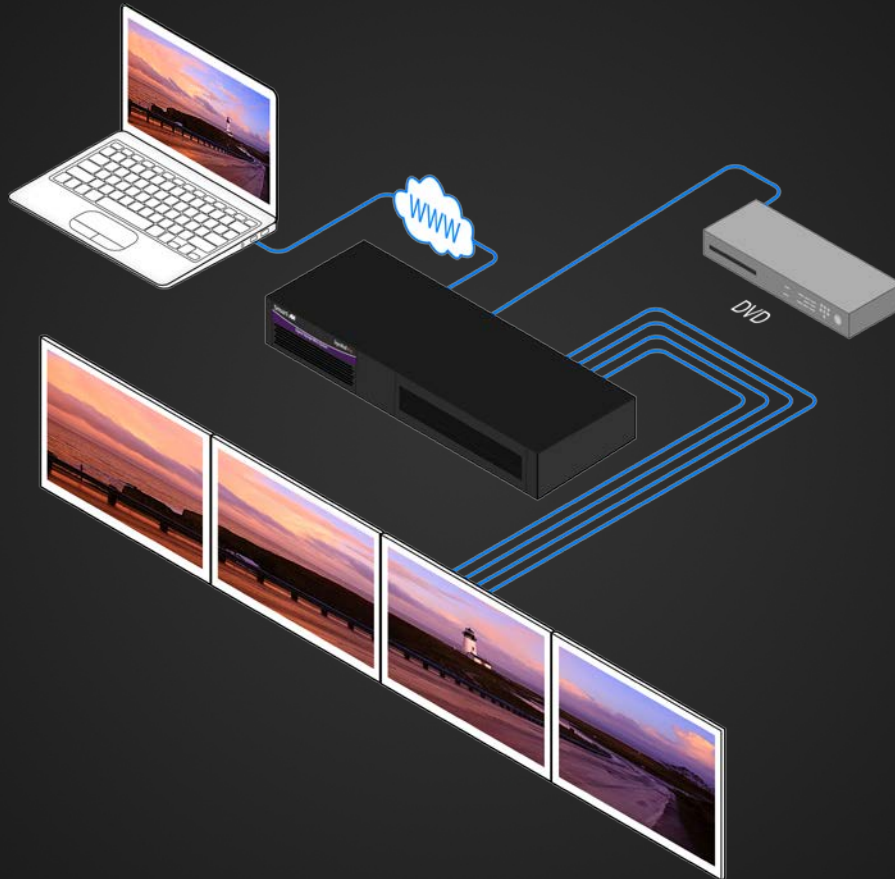
PresenterWall has so much video wall processing power that it can run as many as 10 full 1080p HD videos simultaneously. It's also fully upgradeable to be able to run even more.





# Installation and Setup

PresenterWall uses the Internet and the least amount of cords possible for a quick set up.



Our bundled software allows you to create layouts, manage content and schedule exact times for your content to display on PresenterWall. Experience the feeling of complete control over your visual communication.

# *Hardware That's Reliable and Cost Effective*

SmartAVI chooses to use hardware components that are time tested, highly compatible and also widely available so we can build our products with superior quality for much cheaper than other products on the market.

The key is SmartAVI mixes and matches the best components from trusted brands like AMD, Intel and NVidia to create tailor-made solutions for our customers' needs.

This means that PresenterWall is not only aggressively priced but also easy to upgrade and repair, so you can feel safe in making your investment in a video wall and digital signage solution.

Here are some of the trusted hardware brands we use:



# PresenterWall Specifications

SUPPORTED FORMATS	
Image	JPG, GIF, Animated GIF
Video	AVI, WMV9, MPEG-2 PS, MPEG-1, MPEG-2 MP@ML, MPEG-4.2 ASP, MPEG-4.10/H.264, MP@L3.0
Audio	MPEG-1 Layer I, II, MPEG-4 AAC
Other	Excel, Powerpoint, PDF, HTML, Flash, Quicktime, RSS
VIDEO INTERFACE	
Adapter	ATI HD Series
Memory	High speed DDR3 Memory
Resolution	Up to 1920 x 1200 @60Hz
AUDIO INTERFACE	
Connector	Stereo 3.5mm Female, SPDIF
OTHER INTERFACES	
USB	USB 2.0, USB 3.0
Firewire	IEEE 1394a
Network	RJ-45 Gigabit
ENVIRONMENTAL	
* Operating temperature: 35° F to 96° F	
* Storage temperature: -20° F to 140° F	
Dimensions	17"W x 3.5"(2U)H x 15"D
WARRANTY	
1 Year	
SYSTEM SPECIFICATIONS	
Motherboard	Intel BOXDP67DEB3 LGA 1155 Intel P67 SATA 6Gb/s USB 3.0 Micro ATX Intel Motherboard
Processor	Intel Core i7
RAM	8GB (4 x 4GB) 240-Pin DDR3 SDRAM DDR3 1333 (PC3 10666) Desktop Memory
Storage	120GB Internal Solid State Drive (SSD)
Operating System	Windows 7 Pro 64-Bit
Input Interface	1 HDMI interface(DVI) 1 DB9 interface(to YPbPr, S-Video, CVBS,1 unbalanced stereo audio line in)
Maximum Sampling Rate	CVBS: 54MHz (4x Oversampling) HDMI/DVI: 225MHz
YPbPr Input Mode	480i, 576i, 480p, 576p, 720p, 1080i,1080p
DVI Input Mode	480i, 576i, 480p, 576p, 720p, 1080i,1080p
HDMI Input Mode	Up to HDMI 1.3 standard, support 36bit DeepColor
CVBS Input	Standard PAL/NTSC



MODEL #	DESCRIPTION
VW-04XAS	PC Windows® based Videowall Controller; VGA 2x2 based on Xpress Video. Includes: [VW-04X, CCXPVGA, ASUSBKEY, CCPWR06 and AP-PRWL-W]
VW-04XDS	PC Windows® based Videowall Controller; DVI 2x2 based on Xpress Video. Includes: [VW-04DX, (CCXPDVI), ASUSBKEY, CCPWR06US and AP-PRWL-W]
VW-04XVAS	PC Windows® based Videowall Controller; VGA 2x2 based on Xpress Video and 4-port NTSC/PAL video overlay system. Includes: [VW-04XV, (CCXPVGA), CCPWR06, ASUSBKEY and AP-PRWL-W]
VW-04XVDS	PC Windows® based Videowall Controller; DVI 2x2 based on Xpress Video and 4-port NTSC/PAL video overlay system. Includes: [VW-04XV, (CCXPDVI), CCPWR06, ASUSBKEY and AP-PRWL-W]
VW-09XAS	PC Windows® based Videowall Controller; VGA 3x3 based on Xpress Video. Includes: [VW-09X, 2x(CCXPVGA), ASUSBKEY, CCPWR06, and AP-PRWL-W]
VW-09XDS	PC Windows® based Videowall Controller; DVI 3x3 based on Xpress Video. Includes: [VW-09X, 2x(CCXPDVI), ASUSBKEY, CCPWR06, and AP-PRWL-W]
VW-09XVAS	PC Windows® based Videowall Controller; VGA 3x3 based on Xpress Video and 4-port NTSC/PAL video overlay system. Includes: [VW-09XV, (CCXPVGA), CCPWR06, ASUSBKEY and AP-PRWL-W]
VW-09XVDS	PC Windows® based Videowall Controller; DVI 3x3 based on Xpress Video and 4-port NTSC/PAL video overlay system. Includes: [VW-09XV, (CCXPDVI), CCPWR06, ASUSBKEY and AP-PRWL-W]
VW-12XAS	PC Windows® based Videowall Controller; VGA 4x3 based on Xpress Video. Includes: [VW-12X, (CCXPVGA), CCPWR06, ASUSBKEY and AP-PRWL-W]
VW-12XDS	PC Windows® based Videowall Controller; DVI 4x3 based on Xpress Video. Includes: [VW-12X, (CCXPDVI), CCPWR06, ASUSBKEY and AP-PRWL-W]
VW-16XAS	PC Windows® based Videowall Controller; VGA 4x4 based on Xpress Video. Includes: [VW-16X, 2x(CCXPVGA), ASUSBKEY, CCPWR06, and AP-PRWL-W]
VW-16XDS	PC Windows® based Videowall Controller; DVI 4x4 based on Xpress Video. Includes: [VW-16X, 2x(CCXPDVI), ASUSBKEY, CCPWR06, and AP-PRWL-W]
OPTIONS	Bigger RAM and SSD available



Designed and Manufactured in the USA

[www.smartavi.com](http://www.smartavi.com)

Tel: 800.AVI.2131 • 818.503.6200 • 11651  
Vanowen St. North Hollywood, CA. 91605

**Smart-AVI**  
SMART AUDIO VIDEO INNOVATION