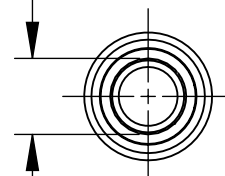


5/16-24 UNF-2B  
TRUNCATED INTERNAL THREAD  
0.301 MAJOR DIAMETER

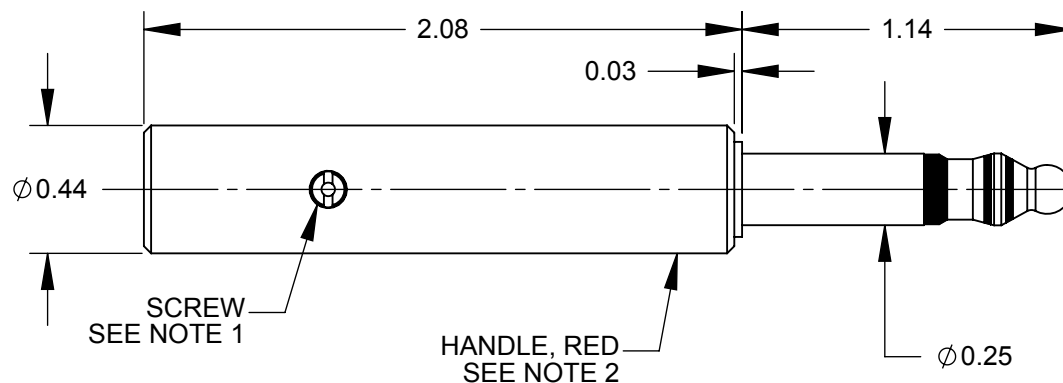
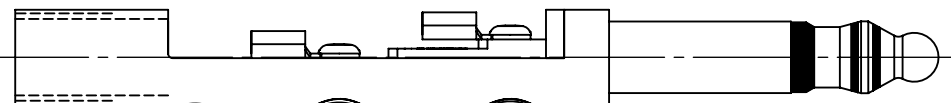
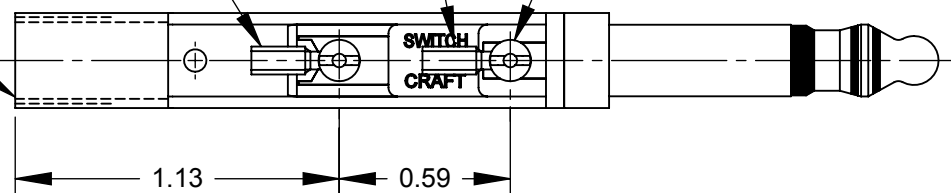
Ø 0.264  
I.D. REF



RING TERMINAL  
SEE NOTE 1

TIP TERMINAL  
SEE NOTE 1

SCREWS (2)  
SEE NOTE 1



#### NOTES:

1. TERMINALS AND SCREWS ARE SHIPPED UNASSEMBLED AS HARDWARE KIT K172.
2. HANDLE SHIPPED UNASSEMBLED.
3. MATERIALS:  
TIP ROD, RING & SLEEVE - COPPER ALLOY  
INSULATION - THERMOPLASTIC, BLACK  
TERMINALS - COPPER ALLOY, TIN PLATED  
SCREWS- COPPER ALLOY  
HANDLE - THERMOPLASTIC, RED
4. THIS PRODUCT IS RoHS COMPLIANT.

**CUSTOMER DRAWING**

					<div>UNLESS OTHERWISE SPECIFIED</div> <div>1. ALL DIMENSIONS IN INCHES</div> <div>- TWO PLACE DECIMALS     ±0.02</div> <div>- THREE PLACE DECIMALS   ±0.005</div>	THIS DRAWING DESCRIBES A DESIGN CONSIDERED PROPRIETARY IN NATURE, DEVELOPED AND MANUFACTURED BY SWITCHCRAFT INC. AND IS RELEASED ON A CONFIDENTIAL BASIS FOR IDENTIFICATION PURPOSES ONLY.															
						SIZE	WIDTH		MULT		LBS/M		TEMPER								
						FINISH						MATERIAL									
						SPEC No.						SPEC No.									
						FIRST USED ON				SCALE		Switchcraft®									
										1.5:1											
						DATE DRAWN	BY	CHKD		APVD		SHEET    1                      OF    1									
A	25653	6/14/07	RS	TJK	1/10/11	RS	RS		TJK												
							1/10/11		1/10/11												
REV	ECO NUMBER	DATE	BY	APVD	NAME						PART No.				REV						
REVISIONS					DO NOT SCALE DRAWING						LITTEL PLUG, RoHS						482X				A

DO NOT SCALE DRAWING

SolidWorks CAD File

