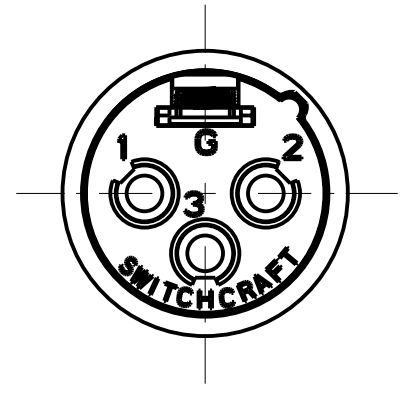
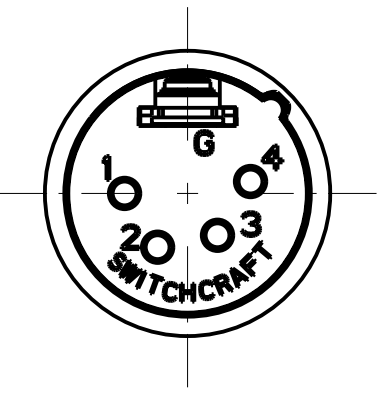


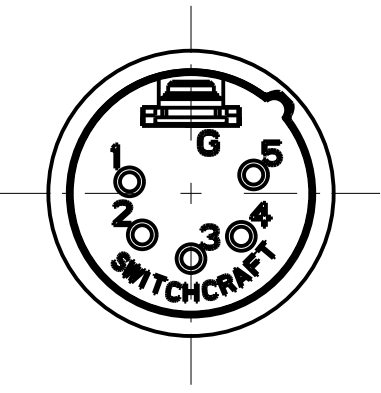
8 7 6 5 4 3 2 1



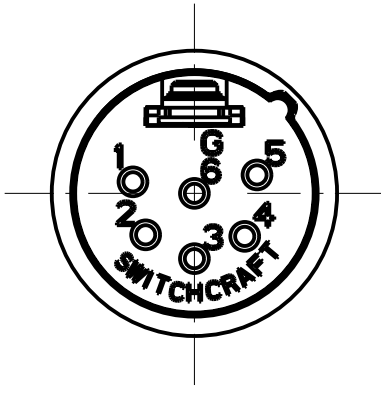
3 PIN



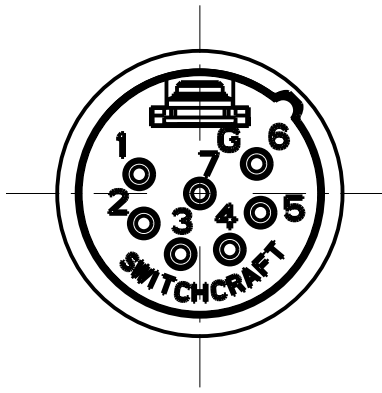
4 PIN



5 PIN



6 PIN



7 PIN

STANDARD SERIES

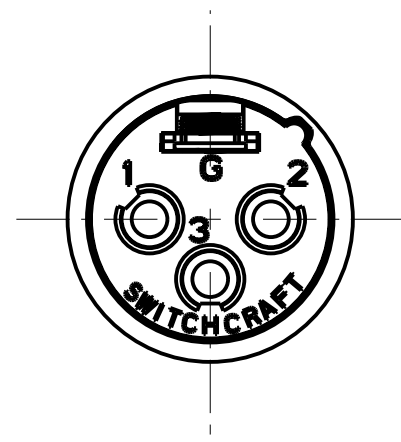
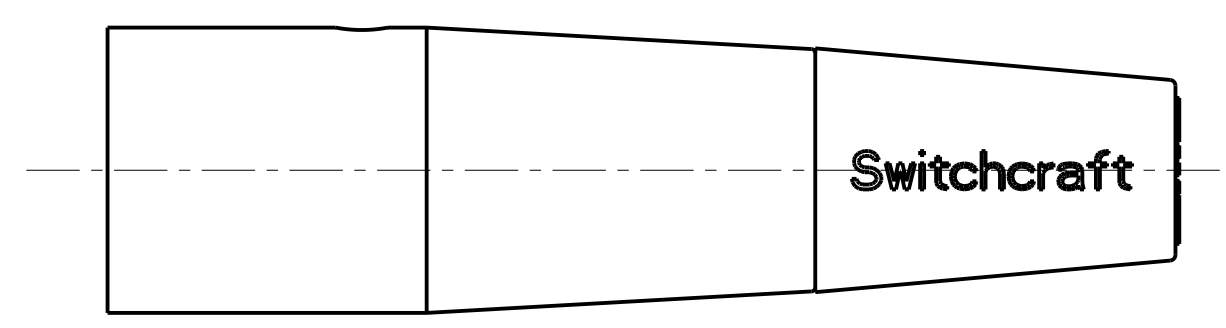
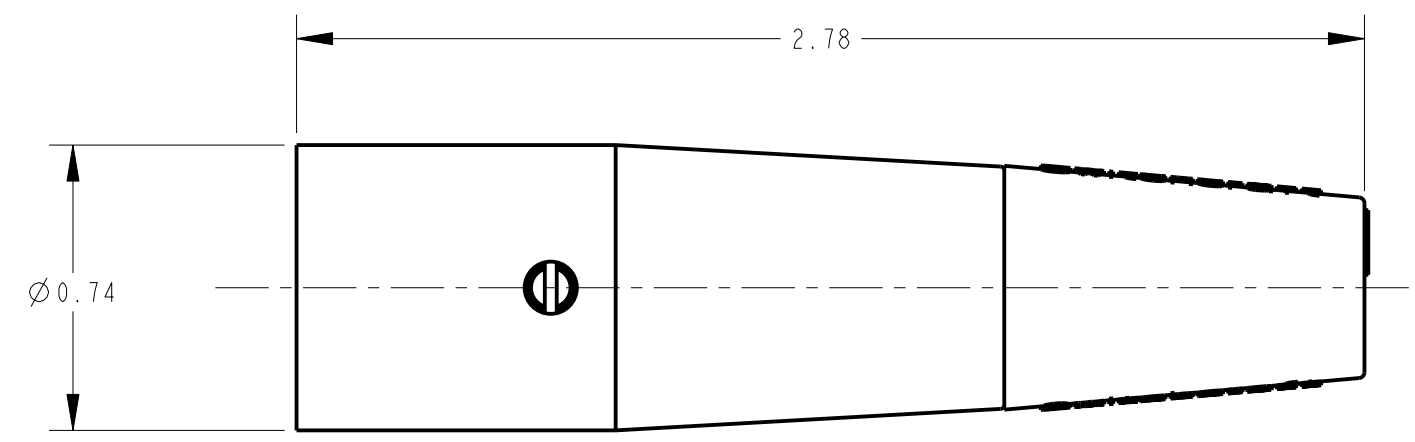
INSERT SCREW - STAINLESS STEEL
 HOUSING - ZINC, NICKEL PLATED
 TUBULAR INSULATOR - MYLAR
 CABLE CLAMP - BRASS, ELECTRO TIN
 FLEX RELIEF - HI-FAX, BLACK
 INSULATOR - POLYESTER, GREEN OR BLACK
 PIN - BRASS, SILVER PLATED

- AA M
- COLOR OF FLEX RELIEF
 - 01 = BROWN
 - 02 = RED
 - 03 = ORANGE
 - 04 = YELLOW
 - 05 = GREEN
 - 06 = BLUE
 - 07 = VIOLET
 - 08 = GRAY
 - 09 = WHITE
 - BLANK = BLACK
 - CONTACT PLATING
 - BLANK = SILVER (STANDARD)
 - AU = GOLD
 - HOUSING FINISH & INSULATOR COLOR
 - BLANK = NICKEL PLATED HOUSING
GREEN INSULATOR
 - B = BLACK HOUSING & INSULATOR
 - FLEX RELIEF SIZE
 - BLANK = STANDARD SIZE (0.210 TO 0.300)
 - L = LARGE CABLES (0.300 TO .0328)
 - S = SMALL CABLES (0.105 TO 0.205)
 - NO. OF CONTACTS:
 - 3 = 3 CONTACTS
 - 4 = 4 CONTACTS
 - 5 = 5 CONTACTS
 - 6 = 6 CONTACTS
 - 7 = 7 CONTACTS

PROFESSIONAL SERIES

SAME AS ABOVE EXCEPT
 CONTACT PIN - PHOSPHOR BRONZE, GOLD OVER NICKEL
 FLEX RELIEF - GRAY

- AQGP 23
- NO. OF CONTACTS:
 - 3 = 3 CONTACTS
 - 4 = 4 CONTACTS
 - 5 = 5 CONTACTS
 - 6 = 6 CONTACTS
 - 7 = 7 CONTACTS



- NOTES:**
- ALL DIMENSIONS REFERENCE UNLESS OTHERWISE SPECIFIED.
 - SHIPPED WITH PIN AND BASE ASSEMBLY NOT FULLY ASSEMBLED.

CUSTOMER DRAWING

G	22706	9-29-99	JL	DG	★ STAR SYMBOL DENOTES CRITICAL DIMENSION	THIS DRAWING DESCRIBES A DESIGN CONSIDERED PROPRIETARY IN NATURE, DEVELOPED AND MANUFACTURED BY SWITCHCRAFT INC. AND IS RELEASED ON A CONFIDENTIAL BASIS FOR IDENTIFICATION PURPOSES ONLY.
F	20762	12-4-96	MM	RB		
E	20642	1-27-96	SG	SG	UNLESS OTHERWISE SPECIFIED	SIZE WIDTH MULT LBS/M TEMPER
					1. ALL DIMENSIONS IN INCHES - TWO PLACE DECIMALS ±0.01 - THREE PLACE DECIMALS ±0.005 - ANGLES ±1° - ALL DIA. CONCENTRIC WITHIN 0.005 T.I.R.	FINISH SPEC No. MATERIAL SPEC No.
K	26965	5-25-12	TO	TJK	2. FEATURES ON THE SAME CENTERLINE MUST BE ALIGNED WITHIN ±0.002	FIRST USED ON SCALE 2:1
J	26936	3-26-12	TO	TJK	3. REMOVE ALL BURRS	DATE DRAWN BY CHKD APVD 6-8-94 SG 8-10-94 GHJ 8-10-94
H	22838	9-29-99	JL	DG	DO NOT SCALE DRAWING	NAME AA SERIES MALE OG SHEET OF
REV	ECO NUMBER	DATE	BY	APVD		Switchcraft® PART No. AA_M SERIES REV K