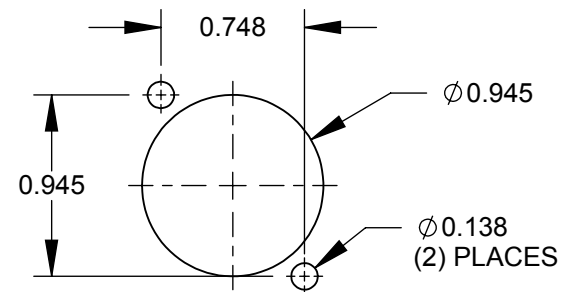
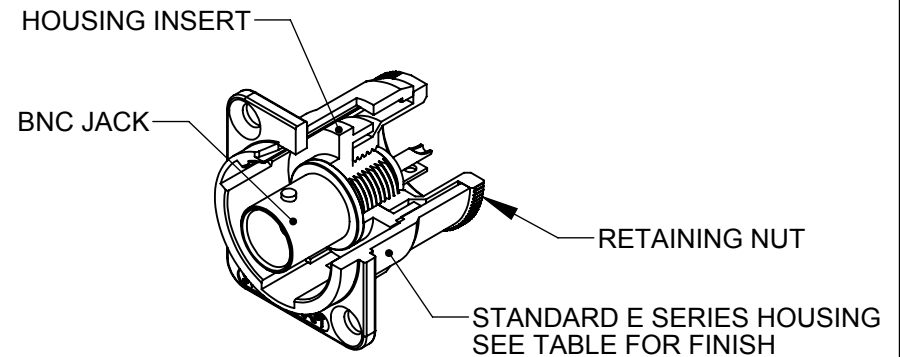
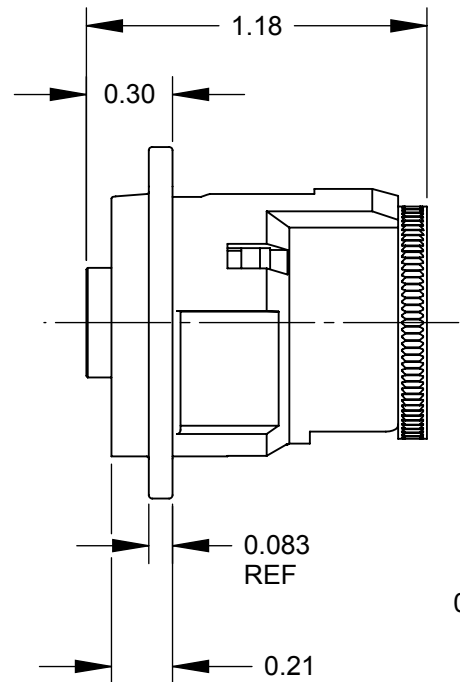


✓ Ø0.138 THRU
Ø0.230 X 82°
(2) PLACES REF



RECOMMENDED
PANEL CUT-OUT

NOTES:

- MATERIALS:**
HOUSING - ZINC ALLOY
HOUSING INSERT - THERMOPLASTIC, BLACK
RETAINING NUT - COPPER ALLOY, NICKEL PLATED
BNC JACK - COPPER ALLOY, NICKEL PLATED

- THIS PRODUCT IS RoHS COMPLIANT.

PART NUMBER	HOUSING FINISH
EHBNCSC	NICKEL
EHBNCSCB	BLACK CHROME

CUSTOMER DRAWING

						THIS DRAWING DESCRIBES A DESIGN CONSIDERED PROPRIETARY IN NATURE, DEVELOPED AND MANUFACTURED BY SWITCHCRAFT INC. AND IS RELEASED ON A CONFIDENTIAL BASIS FOR IDENTIFICATION PURPOSES ONLY.															
					UNLESS OTHERWISE SPECIFIED 1. ALL DIMENSIONS IN INCHES - TWO PLACE DECIMALS ±0.02 - THREE PLACE DECIMALS ±0.005	SIZE		WIDTH		MULT		LBS/M		TEMPER							
E	27482	04/20/15	PC	TJK		FINISH						MATERIAL									
D	26634	10/08/10	JEB	TJK		SPEC No.						SPEC No.									
C	26415	7/17/09	RS	TJK		FIRST USED ON				SCALE 1.5:1		Switchcraft®									
B	24827	10/12/04	JL	MA		DATE DRAWN 9/25/02	BY MA	CHKD MA 10/31/03	APVD MA 10/31/03												
A	24626	1/27/04	JL	MA								SHEET 1 OF 1									
REV	ECO NUMBER	DATE	BY	APVD								NAME		PART No.				REV			
REVISIONS					DO NOT SCALE DRAWING					E SERIES CONNECTOR, BNC, SOLDER TERMINATION, RoHS						EHBNCSC SERIES				E	

UNLESS OTHERWISE SPECIFIED

- ALL DIMENSIONS IN INCHES
- TWO PLACE DECIMALS ±0.02
- THREE PLACE DECIMALS ±0.005

DO NOT SCALE DRAWING

SolidWorks CAD File

