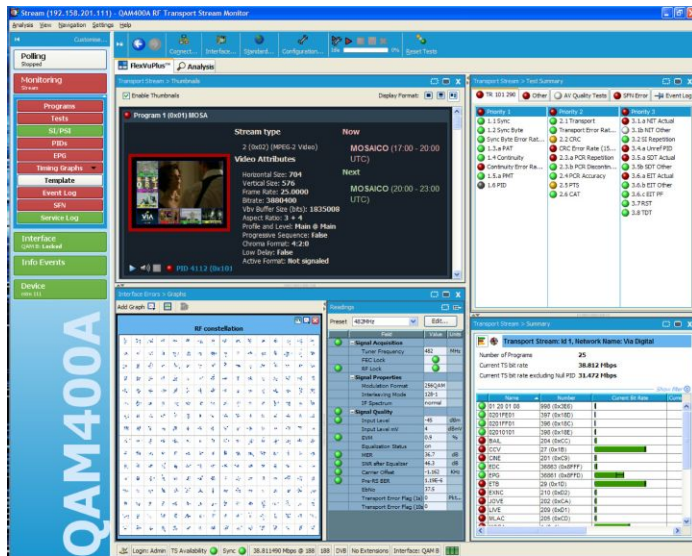


QAM400A DTV Monitor

QAM400A Datasheet



The QAM400A provides a complete solution for real-time transmission monitoring of MPEG Transport Streams over RF and ASI interfaces. Powerful confidence monitoring capability and deep diagnostic measurements are both combined into a single integrated solution. This enables cable operators to deliver superior QoS levels with reduced operational expenditure. Deployed at key network nodes, the QAM400A provides an intuitive and simplified presentation of video quality and diagnostic information. This supports the delivery of superior Quality of Service (QoS) levels in an increasingly complex broadcast environment. When used together with VQNet™, facility and network-wide views allow engineers to sectionalize network problems.

Features and benefits

- Comprehensive confidence monitoring at the RF modulated layer with optional QAM Annex A, B, or C interfaces, as well as MER (up to 37 db typical), BER, and Constellation displays. These critical RF measurements provide early indication of signal degradation before any picture impairment is visible to the end customer without additional costly RF test equipment
- Unique dual-level alarming and seven-day trend information proactively identifies impending problems before they become visible to the viewer
- FlexVu™ uniquely empowers operations staff with the simplest information necessary to prove their service is delivering above their defined thresholds for superior Quality of Service (QoS)
- Powerful diagnostic user interface provides intelligent hierarchical views of network information, media, and data, allowing engineers to rapidly identify the root cause of underlying service problems

- Multilayer, multichannel, remote monitoring and measurement at RF and TS layers to DVB, ATSC, SCTE, DCII, and ISDB-T/Tb standards with content-checking support for both MPEG-2 and H.264/AVC
- Comprehensive user-defined template monitoring ensures right content at the right place at the right time while content-ratings checking ensures only appropriate content broadcast
- Simultaneous connection of multiple remote users and Network Management Systems (NMS) provides early visibility of problems to key individuals throughout the organization to support quicker corrective action
- Embedded architecture designed specifically for continuous 24x7 operation maximizes service assurance, thus minimizing cost of customer complaints and equipment maintenance (disk-free operation)
- Remote recording allows capture and analysis of stream events for expert offline analysis to diagnose difficult and intermittent problems, requiring no engineer site visits
- Highly scalable and field-upgradeable monitoring solution to tailor capital expenditure with operational growth

Applications

- Cable Headend Monitoring
- IPTV Ingest and Headend Monitoring
- Edge Network Monitoring
 - ASI to RF
 - IP to RF (Requires both IPM400A and QAM400A units)
 - IP to ASI

Deployed at key network nodes, the QAM400A provides an intuitive and simplified presentation of video quality and diagnostic information to support delivery of superior QoS levels in an increasingly complex broadcast environment.

Verify RF and TS integrity on a QAM channel with the ability to tune to any QAM channel for verification and diagnostics; ideal for monitoring output of headend SEM or Edge QAM devices at the RF combiner, with support for both MPEG-2 and H.264 at either Constant Bit Rate (CBR) or Variable Bit Rate (VBR).

Technical overview

The QAM400A provides a complete solution for real-time transmission monitoring of MPEG Transport Streams over RF and ASI interfaces. Powerful confidence monitoring capability and deep diagnostic measurements are both combined into a single integrated solution. The confidence monitoring capability uniquely simplifies DTV monitoring with the FlexVu™ summary displays, which include video thumbnail and Electronic Program Guide (EPG) views. This empowers operational staff with the simplest information necessary to ensure their service is delivering above their defined thresholds for superior QoS.

The deep diagnostic option provides engineers with intelligent hierarchical views of network information, media, and data to support rapidly identifying the root cause of underlying service problems. This diagnostic monitoring option provides more in-depth analysis of the MPEG Transport Stream including recording capability and a comprehensive range of TS testing including TR 101 290, A/65, A/78, SCTE-142 compliance testing.

The QAM400A provides a single Transport Stream processor platform packaged in a 1 RU rackmount chassis to provide monitoring of a Transport Stream at data rates up to 155 Mb/s¹. The QAM interface allows the QAM400A to receive RF inputs and display key RF monitoring parameters including MER, BER, and Constellation displays before demodulating the signal to provide measurements on the health of the Transport Stream.

The channel polling capability for the QAM400A probe combined with the RF interface allows up to 200 RF channels to be monitored in a repeating cyclic measurement process. Control and configuration of the polling is undertaken using flexible XML scripting. This polling ability makes a single QAM400A probe a broader tool, monitoring large numbers of network points in a time-sampled measurement mode.

The remote user interface provides a highly simplified presentation of video quality and diagnostic information for operations and engineering teams.

For a fully integrated monitoring solution, network management platforms are supported with a full set of APIs to support wider distributed network intelligence. This also includes video walls that can display up to the full transmitted resolution of the video stream for network operation centers.

Flexible and upgradeable

The QAM400A provides a highly scalable and field-upgradeable monitoring solution to tailor capital expenditure with operational growth. The extended confidence monitoring probes can be installed throughout the network and powerful diagnostic capability (Option DIAG) can be added to the key monitoring points where Transport Streams are manipulated.

- Triggered recording to be captured and rapidly analyzed in greater depth using powerful offline analysis tools such as the Tektronix MPEG Test System Stand-alone Software²
- PSI/SI/PSIP/ARIB SI analysis and repetition rate graphing allows broadcasters to determine that the system information is present and correct in the Transport Stream
- Exception monitoring with simple automated template generation from reference streams. Template testing checks a number of key parameters to ensure that the Transport Stream has been constructed as the broadcaster intended. These parameters include the Transport Stream ID and Network ID, the number of programs in the multiplex, that each program has all of its components (Video, Audio, Data, Teletext, Subtitles), and Conditional Access (CA) status
- Bit rate testing determines whether PIDs, programs, services, or user-defined groups of PIDs are within user-definable limits to ensure correct multiplex operation. Tektronix-proprietary PID variability test gives indication of PID bit rate variation to assess effects of statistical multiplexing
- In-depth PCR analysis with graphical results views enable timing and jitter measurements to be made to ensure correct operation of the network
- Comprehensive service logging enables verification of service level agreements to ensure that contractual obligations are met
- When used in conjunction with the VQS1000 Video Quality Software application, provides reliable and sophisticated analysis algorithms applied to decoded MPEG-2 or H.264 video to identify stuck, black, macro-blocking, and compression artifacts

¹ Maximum Transport Stream bit rate is dependent on Transport Stream content and depth of analysis being performed. Depth of stream analysis is handled gracefully if SI/PSIP max content is exceeded to ensure critical measurements continue to be performed.

² MTS400 Series MPEG Test System offline software tools are available for use with the MTM400A. These are stand-alone software applications intended to run on the customer's control PC. Separate data sheet is available.

Measurement functions

QAM400A Extended Confidence Monitor In Standard Configuration

- MPEG-2, DVB (TR 101 290), ATSC, and ISDB supported
- TR 101 290 Priority 1, 2, and 3 measurements³ in accordance with the techniques specified in TR 101 290
- Supports A/65, A/78, and SCTE-142 compliance testing
- Continuity count displayed on a per PID or per TS basis
- PSI/SI/PSIP/ARIB SI analysis and repetition rate graphing. Transport Stream structure view with ability to drill down to examine tables and service contents plus real-time graphical representation of table repetition rates
- Bit rate measurement in accordance with the methodology specified in TR 101 290 MGB2
- Packet size detection
- Comprehensive error logging that context filters with navigation
- Status of all tests and measurements is available through SNMP MIB with support for SNMP traps⁴

Diagnostic monitoring options (Opt. DIAG)

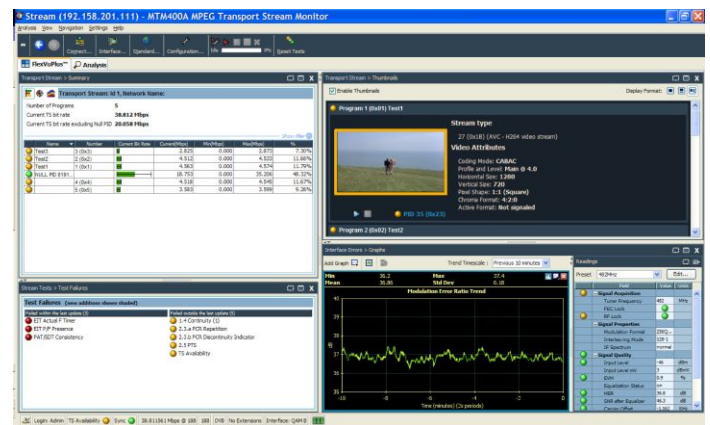
- Triggered recording with user-definable pre-triggered buffering and up to 160 MB available storage
- Template testing (for user-defined service plan testing). User-definable tests with scheduled template updating
- Bit rate testing on a per PID, program, or user-defined groups of PIDs basis
- In-depth timing analysis with graphical results views of:
 - PCR_OJ (Overall Jitter)
 - PCR_AC (Accuracy)
 - PCR_FO (Frequency Offset)
 - PCR_DR (Drift Rate)
 - PTS Arrival Interval
- Service logging of user-selected PIDs to record packet rates at user-definable intervals
- Channel polling allows up to 200 channels to be polled sequentially from either the IP or the RF interface

Remote User Interface (RUI)

The Remote User Interface (RUI) is capable of providing simultaneous measurement results to multiple key resources, supporting improved organizational efficiency and workflow to minimize network downtime. It is also capable of being integrated into wider network management platforms to support wider distributed network intelligence. The confidence monitoring capability uniquely simplifies DTV monitoring with the FlexVu™ summary panels. For diagnostic monitoring a context-sensitive analysis paradigm provides a rich multilayer environment that presents complex information with an intuitive hierarchical approach. The supporting extensive navigation options ensure that you can identify the root cause of error alarms with minimal mouse clicks.

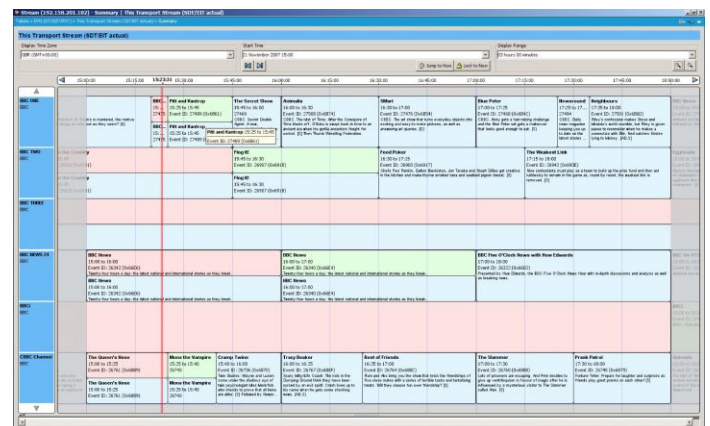
Confidence monitoring

- FlexVu™ uniquely presents simplified presentation of video quality and diagnostic information, to enable delivery of superior QoS levels in an increasingly complex broadcast environment



FlexVu™ Configurable window

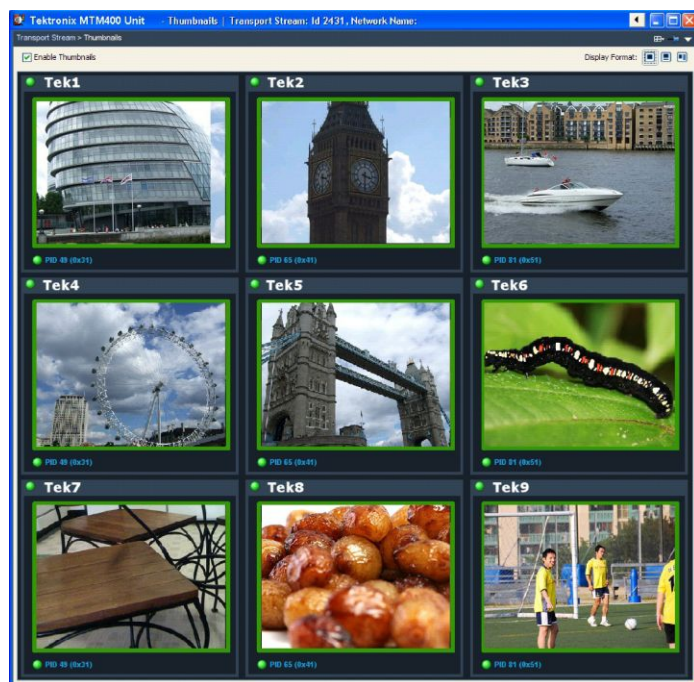
- At-a-glance service view with video thumbnails and interactive Electronic Programming Guide (EPG); empowering operations staff with the simplest information to monitor service delivery



EPG view

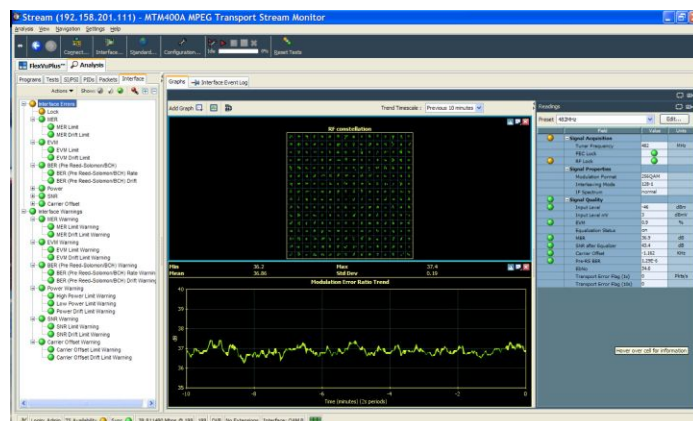
³ Except T-STD buffer model analysis.

⁴ Programmers Guide is available on request with full SNMP MIB and HTTP interface documentation.



Video thumbnails

- Comprehensive seven-day trending of IP and RF broadcast streams supports proactive network optimization to minimize downtime



RF Trending QAM interface (with dual alarming)

Diagnostic monitoring

- Powerful user interface provides intelligent hierarchical views of network information, media, and data allowing engineers to rapidly identify the root cause of underlying service problems
- Accelerate time-to-insight with context-sensitive navigation and filtered logging to isolate root cause of test failure

Characteristics

Power requirements

Power Consumption (Nominal)	40 VA.
Voltage	100 to 240 V.
Frequency	50/60 Hz.

Monitoring

Maximum Data Rate	155 Mb/s ⁵
Minimum Data Rate	250 Kb/s.

TR 101 290 tests and measurements

TR 101 290 tests and measurements	1st priority measurements	2nd priority measurements	3rd priority measurements
	1.1 Ts_sync_loss	2.1 Transport_error	3.1a NIT_actual_error
	1.2 Sync_byte_error	2.2 CRC_error	3.1b NIT_other_error
	1.3a PAT_error_2	2.3a PCR_repetition_error	3.2 SI_repetition_error
	1.4 Continuity_count_error	2.3b PCR_discontinuity_indicator_error	3.4a Unreferenced_PID
	1.5a PMT_error_2	2.4 PCR_accuracy_error	3.5a SDT_actual_error
	1.6 PID_error	2.5 PTS_error	3.5b SDT_other_error
		2.6 CAT_error	3.6a EIT_actual_error
			3.6b EIT_other_error
			3.6c EIT_PF_error
			3.7 RST_error
			3.8 TDT_error

⁵ Maximum Transport Stream bit rate is dependent on Transport Stream content and depth of analysis being performed. Depth of stream analysis is handled gracefully if SI/PSIP max content is exceeded to ensure critical measurements continue to be performed.

QAM Interface Characteristics (Options QA, QB2, QC)

QAM Interface Characteristics (Options QA, QB2, QC)

Characteristic	QAM Annex A	QAM Annex B	QAM Annex C
Input Frequency Range	51 MHz to 858 MHz, 62.5 kHz steps	88 MHz to 858 MHz, 62.5 kHz steps	
Modulation Format	16QAM, 64QAM, 256QAM compliant with ITU J-83 and DVB-C ETS 300 429	64QAM, 256QAM compliant with ITU J-83 ⁶ SCTE07 Compliant	16QAM, 64QAM, 256QAM Compliant with ITU J-83
Modulation Baud Rate	5 Mbaud/s min 6.952 Mbaud/s max	5.057 Mbaud/s and 5.360 Mbaud/s	5 Mbaud/s min 5.5 Mbaud/s max
Input Signal Level	–59 dBm to –19 dBm(50 dBuV to 90 dBuV relative to 75 Ω), with a 16, 64, and 256 QAM input typical	–64 dBm to –19 dBm(45 dBuV to 90 dBuV relative to 75 Ω), with a 64 and 256 QAM input typical	–59 dBm to –19 dBm(50 dBuV to 90 dBuV relative to 75 Ω), with a 16, 64, and 256 QAM input typical
Ultimate Modulation Error Ratio	37 dB typical		
Receiver Bandwidth	8 MHz nominal	6 MHz nominal	
Input Termination Impedance	75 Ω nominal		
Input Return Loss	–6 dB min, –10 dB typical, 51 MHz to 858 MHz		
Loopthrough Power Gain	1.5 dB to 4 dB typical, 51 MHz to 858 MHz	N/A	N/A
Loopthrough Noise Figure	8 dB typical	N/A	N/A
Loopthrough Output Return Loss	>10 dB typical	N/A	N/A

QAM Annex A/C Measurements (Option QA or QC)

RF Lock RF lock is indicated by a LED on the rear panel and a status icon on UI

EVM (Error Vector Magnitude) Display Range for 64 QAM: $\leq 1\%$ to $\geq 5\%$ RMS
Display Range for 256 QAM: $\leq 1\%$ to $\geq 2.5\%$ RMS
Resolution: 0.1%
Accuracy: Within 20% of reading for S/N >25 dB typical

Ultimate MER (Modulation Error Ratio) 38 dB typical

Post R5 BER and TEF (Transport Error Flag)

Constellation The RF constellation is displayed on the UI

⁶ Level 1 and Level 2 interleaving support compliant with all ITU J-83 Annex B, excluding I,J = 128,7 and 128,8.

QAM Annex B Measurements (Option QB2)

RF Lock	RF lock is indicated by a LED on the rear panel and a status icon on UI
Input level (Signal strength)	Range: -64 dBm to -19 dBm Resolution: 1 dBm Accuracy: ± 3 dBm typical This includes the ability to set alarms and produce trend graphs over a seven-day period including min, max, and average
EVM (Error Vector Magnitude)	Display Range for 64 QAM: $\leq 1\%$ to $\geq 5\%$ RMS Display Range for 256 QAM: $\leq 1\%$ to $\geq 2.5\%$ RMS Resolution: 0.1% Accuracy: Within 20% of reading for S/N > 25 dB typical This includes the ability to set alarms and produce trend graphs over a seven-day period including min, max, and average
MER (Modulation Error Ratio)	Display Range for 64 QAM: 22 dB to 37 dB Display Range for 256 QAM: 28 dB to 37 dB Resolution: 0.1 dB Accuracy: ± 1 dB for MER < 25 dB ± 3 dB for MER 25 dB to 34 dB typical This includes the ability to set alarms and produce trend graphs over a seven-day period including min, max, and average
SNR	Display Range for 64 QAM: 22 dB to 37 dB Display Range for 256 QAM: 28 dB to 37 dB Resolution: 1 dB Accuracy: ± 1 dB for MER < 25 dB ± 3 dB for MER 25 dB to 34 dB typical This includes the ability to set alarms and produce trend graphs over a seven-day period including min, max, and average
BER	Pre FEC, SER, and Error Sec BER values are displayed
Post R5 BER and TEF (Transport Error Flag)	Post Reed Solomon BER (uncorrectable error count) and number of Transport Error Flags are displayed on the UI
Constellation	The RF constellation is displayed on the UI

Environment and safety

Temperature

Operating	+5 °C to +40 °C
Nonoperating	−10 °C to +60 °C

Humidity

Operating	Maximum relative humidity 80% for temperatures up to 31 °C decreasing linearly to 50% relative humidity at 40 °C
Nonoperating	10% to 95% relative humidity, noncondensing

Altitude

Operating	0 to 3000 m (9800 ft.)
Nonoperating	0 to 12000 m (40000 ft.)

Random vibration

Operating	5 to 500 Hz, GRMS = 2.28
Nonoperating	.5 to 500 Hz, GRMS = 0.27

Functional shock

Operating	30 G, half sine, 11 ms duration
-----------	---------------------------------

Regulatory

Electromagnetic compatibility	EC Declaration of Conformity: Meets EN55103. Electromagnetic environment E4 Australia / New Zealand Declaration of Conformity: Meets AS/ NZS 2064 FCC: Emissions are within FCC CFR 47, Part 15, Subpart B, Class A limits
-------------------------------	---

Safety

Meets 73/23/EEC, EN61010-1, UL3111-1 and CAN/CSA 22.2 No. 1010.1-92, IEC61010-1

Physical characteristics

Dimensions

Dimension	mm	in.
Height	44	1.73
Width	430	17.13
Depth	600	23.62

Weight

Weight ⁷	kg	lb.
Net	6.0	13.3
Shipping	9.0	19.7

⁷ Weight does not include optional interface cards.

Required Clearance

Dimension	mm	in.
Top	0	0
Bottom	0	0
Left Side	Standard 19 in. rackmount	
Right Side	Standard 19 in. rackmount	
Front	Clearance for handles required	
Rear	Clearance for connectors required	

Ordering information

Models

QAM400A	DTV monitor for TS and RF cable network monitoring.
---------	---

Standard accessories

1RU	Chassis fitted with Transport Stream processor card
-	QAM Annex A, B, or C interface
-	manual
-	rack slides
-	power cord
-	license key certificate

Instrument options

Options

Option	Description
Opt. DIAG	Deep-dive MPEG diagnostic analysis Includes: <ul style="list-style-type: none"> Triggered recording capability up to 160 MB Template testing (for user-defined service plan testing) In-depth PCR analysis with graphical result views Bit rate testing functionality Service logging RF polling functionality
Opt. QA	QAM Annex A interface
Opt. QB2	QAM Annex B interface
Opt. QC	QAM Annex C interface

Complementary products

Item	Description
MTS4SA Opt. TSCL	Stand-alone Deferred Time Software package. DVB/ATSC/ARIB TS Compliance Analyzer Software (TS file size limited to 192 MB). For full details see separate data sheet
VQNet	Video Service Assurance Management System. For full details please see separate data sheet
VQS1000	Video Quality Software application for single-ended QoE analysis of video and audio content

Service options

Opt. R3	Repair Service 3 Years (including warranty)
Opt. R5	Repair Service 5 Years (including warranty)

Power plug options

Opt. A0	North America power plug (115 V, 60 Hz)
Opt. A1	Universal Euro power plug (220 V, 50 Hz)
Opt. A2	United Kingdom power plug (240 V, 50 Hz)
Opt. A3	Australia power plug (240 V, 50 Hz)
Opt. A4	North America power plug (240 V, 50 Hz)
Opt. A5	Switzerland power plug (220 V, 50 Hz)
Opt. A6	Japan power plug (100 V, 110/120 V, 60 Hz)
Opt. A10	China power plug (50 Hz)
Opt. A99	No power cord

QAM4UP options

DIAG	Field upgrade kit to add deep-dive MPEG diagnostic analysis to an existing probe
------	--



Tektronix is registered to ISO 9001 and ISO 14001 by SRI Quality System Registrar.



Product(s) complies with IEEE Standard 488.1-1987, RS-232-C, and with Tektronix Standard Codes and Formats.

ASEAN / Australasia (65) 6356 3900	Austria 00800 2255 4835*	Balkans, Israel, South Africa and other ISE Countries +41 52 675 3777
Belgium 00800 2255 4835*	Brazil +55 (11) 3759 7627	Canada 1 800 833 9200
Central East Europe and the Baltics +41 52 675 3777	Central Europe & Greece +41 52 675 3777	Denmark +45 80 88 1401
Finland +41 52 675 3777	France 00800 2255 4835*	Germany 00800 2255 4835*
Hong Kong 400 820 5835	India 000 800 650 1835	Italy 00800 2255 4835*
Japan 81 (3) 6714 3010	Luxembourg +41 52 675 3777	Mexico, Central/South America & Caribbean 52 (55) 56 04 50 90
Middle East, Asia, and North Africa +41 52 675 3777	The Netherlands 00800 2255 4835*	Norway 800 16098
People's Republic of China 400 820 5835	Poland +41 52 675 3777	Portugal 80 08 12370
Republic of Korea 001 800 8255 2835	Russia & CIS +7 (495) 6647564	South Africa +41 52 675 3777
Spain 00800 2255 4835*	Sweden 00800 2255 4835*	Switzerland 00800 2255 4835*
Taiwan 886 (2) 2722 9622	United Kingdom & Ireland 00800 2255 4835*	USA 1 800 833 9200

* European toll-free number. If not accessible, call: +41 52 675 3777

Updated 10 April 2013

For Further Information. Tektronix maintains a comprehensive, constantly expanding collection of application notes, technical briefs and other resources to help engineers working on the cutting edge of technology. Please visit www.tektronix.com.

Copyright © Tektronix, Inc. All rights reserved. Tektronix products are covered by U.S. and foreign patents, issued and pending. Information in this publication supersedes that in all previously published material. Specification and price change privileges reserved. TEKTRONIX and TEK are registered trademarks of Tektronix, Inc. All other trade names referenced are the service marks, trademarks, or registered trademarks of their respective companies.

