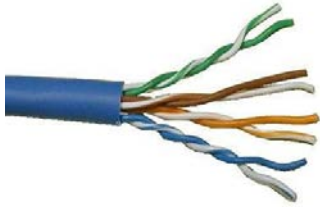


## Technical Data Sheet- Category 6 Network Plenum

# WEST PENN WIRE



2833 West Chestnut Street  
Washington, PA 15301  
Toll Free: (800) 245-4964  
Fax: (724) 222-6420  
[www.westpenn-wpw.com](http://www.westpenn-wpw.com)

---

<b>PART NUMBER:</b>	<b>254246</b>
<b>DESCRIPTION:</b>	23 AWG.- 4 PAIR Solid bare copper conductors, unshielded with an overall plenum jacket.
<b>NEC RATING:</b>	CMP
<b>APPROVALS:</b>	(UL) C(UL) Listed or c(ETL)us Listed
<b>APPLICATION:</b>	Indoor Plenum - Category 5E/6 Applications- Ethernet, IP Cameras, Digital Integration Meets or exceeds TIA/EIA 568B.2.1 Category 6 Specifications

---

### Construction Parameters:

Conductor	23 AWG Bare Copper (.6 mm)
Stranding	Solid
Number of Conductors	8 (4 Pair)
Insulation	Thermoplastic Plenum- .008"
Shield	None
Drain	None
Core Separator	Yes
Jacket Material	Plenum PVC
Overall Cable Diameter	0.208" Nom.
Approximate Cable Weight	28 Lbs/1M' Nom.
Flame Rating	NFPA 262

---

### Electrical & Environmental Properties:

Operating Temperature Rating	-20°C To +60°C
Operating Voltage Rating	300 V RMS
DC Resistance per Conductor @ 20deg C	7.8 Ohms/100m Nom. 23.8 Ohms/1000ft Nom.
Mutual Capacitance	14pf/ft Nominal
Nominal Impedance	100 Ohms+/-15% (1-100Mhz)
Velocity of Propagation	72% Nominal
Delay Skew	45ns/100m MAX
Standards	TIA/EIA568-B.2 1
Insulation Colors	1.Blue/White-Blue, 2. Orange/White-Orange 3. Green/White-Green, 4. Brown/White-Brown
Jacket Color	Gray, White, Blue
RoHS Compliant	Yes

## Electrical Specifications:

Frequency: MHz	1	10	25	100	250	400
Insertion Loss: dB/100m	1.8	5.7	9.1	19.0	31.5	41.3
NEXT: dB/100m	74.3	59.3	53.3	44.3	38.3	35.3
ACR: dB/100m	72.3	53.3	46.3	24.5	5.5	--
PS-NEXT: dB/100m	72.3	57.3	51.3	42.3	36.3	33.3
PS-ACR: dB/100m	70.3	51.3	41.8	22.5	3.5	--
ELFEXT: dB/100m	67.8	47.8	39.8	27.8	19.8	15.8
PS-ELFEXT: dB/100m	64.8	44.8	36.8	24.8	16.8	12.8
RL: dB	20	25	24.3	20.1	17.3	15.9

Operating Temp	-20 C to +60 C
Storage Temp	-20 C to +75 C
Installation Temp	0 C to + 60 C
Delay Skew	45ns/100m Max

## Mechanical Properties:

Max. Recommended Pull Tension	25 lbs.
Min. Bend Radius (Install)	1.00"

## Accessories:

### Connectors: Jacks

KJ458MT-C6C-xx  
Xx: BK,BU, WH, YE, RD

### Connectors: Plugs

32-6EZP – EZ Plugs  
32-6198UL Cat 6

### Boots

32-1900-xx – xx: Colors

### Tools:

TL-135 110 Punch down tool  
TL-114 Crimp Tool  
TL-EZRJ45 Crimp Tool – EZ Plugs

### Cable Assemblies:

C6C-114CC-xx  
CC: Color: BK, BU, GY, RD, WH, YE  
xx: Length Footage: 3,7,10,15,20,25

### Patch Panels:

12458MD-C6C 12 Port  
24458MC-C6C 24 Port  
48458MD-C6C 48 Port

Specification Issue Date: 11/12

This document is the property of West Penn Wire.  
The information contained herein is considered  
Proprietary and not to be reproduced by any means  
Without written consent of West Penn Wire

Standard Lengths are 1000ft.  
The Jacket is sequentially footmarked.  
The information presented here is, to the best of our  
knowledge, is true and accurate. However, since  
conditions of use are beyond our control, all  
recommendations or suggestions are presented  
without guarantee or responsibility on our part. We  
disclaim all liability in connection with the use of  
information contained herein or otherwise.