

# MOBILE OVER-THE-AIR TELEVISION ANTENNAS



plus more



All trademarks and registered trademarks are the property of their respective owners.



**WINEGARD®**

# Sensar® IV TV Antenna With Integrated Wingman Antenna

## America's No. 1 Selling RV TV Antenna Just Got Better!

Winegard has taken the powerfully performing Sensar III antenna and integrated it with the UHF enhanced Wingman antenna for the ultimate in over-the-air TV viewing! Optimized for the new DTV spectrum, this amplified antenna receives all available VHF/UHF channels so you can enjoy watching all your favorite local programs while parked. Raise, lower and rotate the antenna with hand crank from inside your RV. It's easy to install and lowers to only 4" inches above the roof while traveling. Integrated Sensar head requires 46.25" L x 15.25" W, unobstructed roof space while stowed. RVW-395 includes amplified antenna and lift assembly, +12 VDC white power supply with on/off switch, white interior control parts and 20 feet of 75 ohm coax cable. Sensar IV head U.S. Patent D620,483.

RVW-395, Sensar IV amplified antenna.

RVW-705, OEM Model, Master pack 4.

RVW7185, OEM Model, Like RVW-395 Amplified Sensar IV antennas. 18" boom, Master pack 4.



### SPECIFICATIONS

Range.....	0 to 55 mi.*
Height - lowered.....	4"
Height - raised.....	40"
Width - antenna head only.....	15.25"
Length - antenna head including elements.....	45.5"
Shipping Weight.....	10.2 lbs.
Impedance.....	75 ohm
Amplifier Gain.....	VHF 15.5 dB average
	UHF 19.5 dB average
Power required.....	+12 VDC at 85 ma

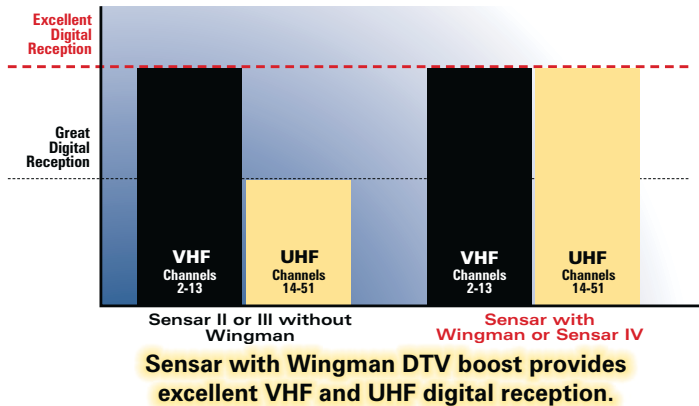
**Ships UPS**

## SensarPro® TV Signal Meter

Designed to work with all amplified Sensar antennas, the SensarPro replaces your current power supply and makes peaking on digital channels a breeze. SensarPro is an all in one product that acts as a signal meter, adjustable amplifier and wall plate power supply for your Sensar antenna. It is ready out of the box and can be customized for specific search modes eliminating guesswork and frustration. Built in amplification can give you up to 10 dB of gain for increased performance or the ability to lower the gain when positioned near a tower. Adjustable audio feedback comes in handy when the wall plate is out of sight or reach. High grade electronic digital tuner focuses only on U.S. digital broadcast frequencies and ignores non-TV broadcast signals to provide precise and accurate channel readings. Available in white or black.



- RFL-342, White, Retail, Master pack 4
- RFL-332, Black, Retail, Master pack 4
- RFL-042, OEM Model, White, Bulk pack 6
- RFL-032, OEM Model, Black, Bulk pack 6



## Sensar® III Antennas

**Amplified Sensar III antenna and lift, RV-3095**, includes 20 feet of 75 ohm coaxial cable, 6 foot TV set cord, mounting hardware and an RV-7042 white wall plate/power supply with push button on/off switch with LED, +12 VDC receptacle, built-in two-way splitter for second TV outlet and cable TV input. Sensar® III head U.S. Patent D500,496.

**Motorized Sensar, MA1000W**, 75 ohm amplified motorized HDTV version of RV-3095 eliminates hand cranking. Simple off/on push button control panel inside your RV raises, lowers and rotates the antenna. Includes antenna, white wall plate control panel, and white RV-7042 power supply switch. Also includes data and coaxial cables and mounting hardware. U.S. Patents D500,496 and 7,358,909.

**Amplified Sensar antenna and lift, RV-7095**, includes only the amplified antenna head and lift assembly with white interior control parts. Power supply and coax cable are not included with this model.



## Omni-directional Antennas

### RoadStar™ HDTV Antenna RS-2000

**RS-2000** RoadStar HDTV antenna is omni-directional, designed for over-the-air viewing! This popular mobile antenna continuously receives VHF/UHF/FM signals from *all directions*. You'll never have to adjust it. Built-in, solid-state amplifier boosts signals an average of 15 dB on VHF, 20 dB on UHF to deliver clear reception while parked.

Aerodynamically designed, the RoadStar antenna has a stylish high-impact, weather resistant and UV protected housing with no moving parts to break or corrode. RS-2000 includes 30 feet of 75 ohm coax cable, 6 feet coax cable, mounting bracket, hardware, RV-7042 white on/off power supply switch with +12 VDC receptacle and two-way splitter for second TV, on/off indicator light and handy cable input.

**RS-3460** RoadStar amplified antenna head and three mounting legs with roof screws in single pack. Power supply and coaxial cable not included.



#### SPECIFICATIONS

Range .....	0 to 35 mi.*
Overall Height.....	10-3/8"
Diameter.....	21-1/2"
Weight w/Mount & Hardware .....	5 lbs.
Bandpass.....	VHF/FM 54-216 MHz .....UHF 470-810 MHz
Amplifier Gain .....	VHF 15.5 dB avg. .....UHF 19.5 dB avg.
Impedance .....	75 ohm
Power Required .....	+12 VDC at 85 ma

**Ships UPS**

### Compact HDTV Antenna RS-1500



Model **RS-1500** omnidirectional HDTV antenna has an aerodynamic design. Includes a black wall plate power supply and a sturdy 1 inch aluminum pipe mount. RS-1500 has auxiliary input for cable or satellite reception; turn power supply off and auxiliary input is automatically connected.

**RS-1560** OEM model; no power supply.

**RS-0156** OEM model; no power supply, 6-pk.

\*Antenna ranges are based on optimum conditions on unobstructed terrain.

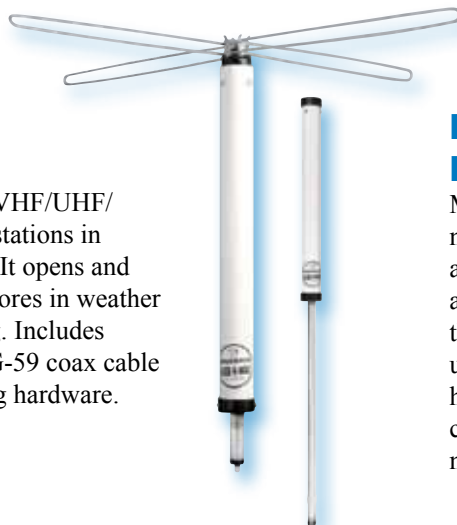
#### SPECIFICATIONS

Range .....	0 to 25 mi.*
Overall Height .....	8.5"
Overall Size, Length & Width .....	16" x 14.75"
Weight w/Mount & Hardware .....	4 lbs.
Bandpass .....	VHF/FM 54-216 MHz .....UHF 470-810 MHz
Amplifier Gain .....	VHF +10 dB avg. .....UHF +7 dB avg.
Impedance .....	75 ohm
Power Required .....	+12 VDC at 85 ma

**Ships UPS**

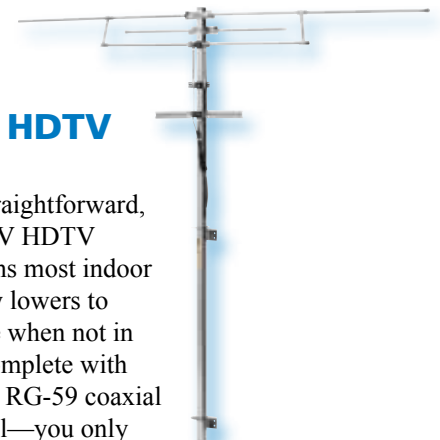
### Hideaway® Omnidirectional HDTV Antenna...

Ideal for campers, **HA-0130** VHF/UHF/FM HDTV antenna receives stations in all directions without rotator. It opens and closes like an umbrella and stores in weather protected tube when traveling. Includes housing with rain cap, 15' RG-59 coax cable with connectors and mounting hardware. Range 0-20 miles.\*



### Bi-directional HDTV RV Antenna...

Model **RV-7020** is a straightforward, non-amplified dipole RV HDTV antenna that outperforms most indoor antennas! Conveniently lowers to the side of your vehicle when not in use. RV-7020 comes complete with hardware, mast and 15' RG-59 coaxial cable. It's easy to install—you only need a screwdriver! Range 0-20 miles.\*



## TV Outlets

### Indoor Outlets, TG Series...

TV outlet with 75 ohm coax cable input and output, and a +12 VDC receptacle. Mounts flush in standard electrical box.

**TG-7321** Ivory, 1 per bag, 6/master.

**TG-7331** Brown, 1 per bag, 6/master.

**TG-7341** White, 1 per bag, 6/master.

**TG-0721** Ivory, in bulk pack, 36/master.

**TG-0731** Brown, in bulk pack, 36/master.

**TG-0741** White, in bulk pack, 36/master.



**TG-7341**

### Wall Outlets...

**OT-8700** is a flush mount 75 ohm TV outlet. Input and output connection through 75 ohm F-jack. Not isolated, no connectors. AC passive. Ivory, 1 per bag, 6/master.

**OT-8740**, White, 1 per bag, 6/master.

**OT-8701**, Brown, 1 per bag, 6/master.

**OT-0874**, White, in bulk pack, 24/master.

**OT-0871**, Brown, in bulk pack, 24/master.



**OT-8740**

## Wall Plate Power Supplies



**RV-7042**



**RV-0842**



**RV-0942**



**RA-7296**

### 7000 Series...

A +12 VDC power supply with polyfuse in a flush mounted wall plate. Designed to provide the RV owner with the option of watching TV from a Winegard RV TV antenna or from an external source such as cable. Features include 75 ohm coaxial input/output connections, two-way splitter for second TV, input switch for cable or TV antenna, select LED light and +12 VDC "cigarette lighter" receptacle for TV set plug-in. *Use only with Winegard amplified antennas.*

**RV-7012** Almond, 1/bag, 6/master.

**RV-0712** Almond, in bulk pack, 36/master.

**RV-7032** Brown, 1/bag, 6/master.

**RV-0732** Brown, in bulk pack, 36/master.

**RV-7042** White, 1/bag, 6/master.

**RV-0742** White, in bulk pack, 36/master.

### 8000 Series...

A +12 VDC power supply with polyfuse in a flush mounted wall plate. Includes two-way splitter for second TV, on/off switch with LED, 75 ohm coaxial cable input and output connection. No +12 VDC receptacle. Single pack option available.

**RV-0822** Almond, in bulk pack, 36/master.

**RV-0832** Brown, in bulk pack, 36/master.

**RV-0842** White, in bulk pack, 36/master.

### 9000 Series...

A +12 VDC power supply with polyfuse in a flush mount wall plate. Includes 75 ohm coaxial input/output connections only, on/off switch with LED. No two-way splitter or +12 VDC "cigarette lighter" receptacle. Single pack option available.

**RV-0922** Almond, in bulk pack, 36/master.

**RV-0532** Same as 9000 series but has cable input. Brown, in bulk pack, 36/master.

**RV-0932** Brown, in bulk pack, 36/master.

**RV-0942** White, in bulk pack, 36/master.

### Wall Plate Amplifier

A +12 VDC VHF/UHF amplified wall plate with +12 VDC receptacle, cable input jack and second set jack. White only. Use with Winegard non-amplified Sensor TV antennas only (RV-5095 and RV-5090 only).

### Combination Wall Plate TV Antenna/Satellite Power Supply

Model **RV-7542** is a TV antenna power supply with cable input jack and built-in two set splitter. Also equipped for input of satellite signal from external jack. White, 1 per clam shell, 6/master.

**RV-0752** Same as RV-7542 in bulk pack of 36, White.

**RV-0751** Same as RV-7542 in bulk pack of 36, Almond.

**RV-0753** Same as RV-7542 in bulk pack of 36, Brown.



**RV-7542**

## Outdoor Receptacles and Covers...

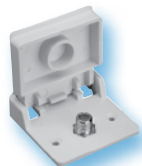
### WA, WB and WT Series

Outdoor receptacles are great when TV, telephone or other appliances will be used outside the RV. Outlet covers feature a thick gasket of closed cell neoprene which compresses to seal against most textured surfaces. Molded of tough Noryl®\* material, receptacles are equipped with stainless steel hardware to prevent breakage and corrosion. Stainless steel mounting screws included. \*Noryl is registered trademark of General Electric Co.

#### Single Satellite Receptacle

**WA-0124** is a single receptacle for 75 ohm coaxial cable satellite input. White, in bulk pack 36/master.

**WA-1024** Same as above, 1 per clam shell, 12/master.

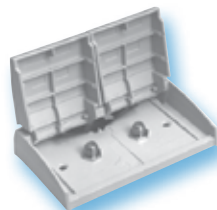


**WA-0124**

#### Cable/TV Receptacle

**WA-1110** is a receptacle with two F-jacks for 75 ohm coaxial cable on TV output and cable input. Uses standard coax connectors. Ivory, 1 per clam shell, 6/master.

**WA-1010** Ivory, 36/master.



**WA-1110**

#### Duplex Receptacle Cover

**WB-1110** is a cover for standard 117 VAC duplex receptacle or other outlets in this format. Ivory, 12/master.

**WB-1120** Same as WB-1110 except white, 12/master.



**WB-1120**

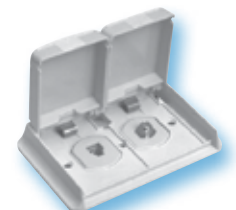
#### TV/Telephone Receptacle

**WT-1010** has one F-jack and one modular telephone plug. F-jack accepts standard coax connectors. Telephone jack has modular output, screw connections on input. Ivory, 6/master.

**WT-1020** Same as WT-1010, but white.

**WT-1110** Same as WT-1010 except 1 per clam shell, 6/master.

**WT-1120** Same as WT-1020 except 1 per clam shell, 6/master.



**WT-1020**

## Sensar® Antenna Accessories

### Sensar IV Antenna Replacement Head

**RVW-205** Integrated Sensar and Wingman antenna head for optimum VHF/UHF reception. Compatible with all Sensar II and III lift assemblies. Requires 16" from boom to nearest obstruction for installation.



RVW-205

### Sensar III Antenna Replacement Head

**RV-2005** For RV series crank-up amplified Sensar antennas where space from boom to nearest obstruction is less than 16".



RV-2005

### Wingman® UHF Sensar Antenna Upgrade

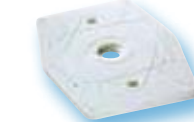
**RV-WING** Lightweight, sleek add-on for improving existing Sensar II or III antenna UHF performance up to 100%. Easy installation; no tools required. (Not compatible with pre 1990 Sensar models). Requires 16" from boom to nearest obstruction for installation. U.S. Patent D612,369.



RV-Wing

### Exterior Roof Wedge

**RW-2000** For vehicles with slanted roofs. Provides level surface for installation of Sensar antennas.



RW-2000

### Interior Roof Wedge

**IW-5000** For use with RV Sensar models when installing on slanted interior ceiling. Use instead of regular ceiling plate. Bulk pack 36.

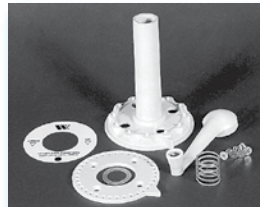


IW-5000

**IW-5012** pack of 12. Can also be shipped individually.

### Interior Control Parts

**CP-3634** Includes white directional handle, elevating crank, ceiling plate, hardware; bulk 12/carton.



CP-3634

**CP-3631** Ivory.

## Tools...

### Cable Stripper

**CS-2000** Quickly and accurately cuts off RG-6 and RG-59 coaxial cable; adjustable.



CS-2000

### Short Detector

**TE-1000** is a hand-held portable coaxial cable short detector, for 75 ohm cable with F-type connector.



TE-1000

### Voltage Tester

**TE-1400** tests for +12 VDC on coaxial cable.



TE-1400

### Crimping Tool

**SP-6311** Hex crimping tool gives tight, neat crimp. Fits RG-59/U, RG-6/U hex connections. Allen wrench included.



SP-6311

### Compression Tool

**SP-7501** Adjustable compression tool for F, BNC, and RCA connectors. Non-ratchet, spring-loaded action. Includes adjustable adapters stored in handle.



SP-7501

### "Tenna Tool"

**TT-1000** tightens 15/16 nut that holds Sensar® gear housing to the base plate.



TT-1000

### E-clip Tool

**ET-0025** Handy tool for applying E-clips to Sensar antenna worm gear.



ET-0025

## Sensar® Antenna Replacement Parts...

### Roof Kits

**RP-4000** a 12.25" hex elevating shaft. Assembly with worm gear, shaft, wave washer, flat washer, O-ring, and worm gear nut. Use with molded interior control parts only.

**RP-4014** for thick roofs. Includes a 14" hex elevating shaft. Use with molded interior control parts only.



RP-4000  
RP-4014  
EK-1036

**EK-1036** Directional handle extension only.

### Crank Handles

**RP-6795** Crank handle, set screw.

White. Hex shaft.

**RP-5895** Crank handle, set screw.

Ivory. Hex shaft.

**RP-5000** Crank handle, set screw.

Ivory. Round shaft.

### Directional Handles

Directional handle, ceiling plate, 4 screws, spring (RP-6822), decal.

**RP-6200** Ivory

**RP-6300** White

### Elevating Tubes

**RP-2900** Two 36" Elevating tubes w/2 grommets, 4 pins, 4 retaining rings, adhesive rubber bumper.

### Gear Housing Replacement

**RP-2049** Gear housing, 2 pins, bearing, nut, O-ring seal, retaining ring.

### Elevating Gear

**RP-3000** Elevating Gear

### Spring

**RP-6822** Spring for directional handle

### Nylon Bearing

**RP-2658** Nylon Bearing

## Misc. Accessories...

### Antenna Up Warning Switch

**SW-2012** is an oil-dampened switch; indicates antenna is in up position.

### Weatherproof Cable Entry Plates

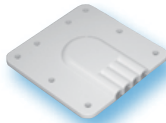
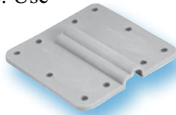
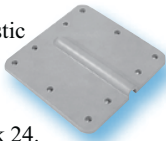
**CE-0001** A molded plastic plate for weatherproof entry of single coax cable into RV; screws not included, bulk pack 24.

**CE-1000** Single pack.

**CE-0002** Same as CE-0001, but for multi-conductor cable. Use with automatic RV satellite system or dual coax systems; screws not included, bulk pack 24.

**CE-2000** Single pack.

**CE-4000** Entry plate for up to four cables. Use with automatic RV satellite system or dual coax systems; screws included. Single pack.



### Roof-Thru Plates

**RJ-1010** An aluminum weatherproof entry plate with 75 ohm F-type connector on both sides. Screws to roof or side of RV.

**RJ-1011** Same as above with dust cap for cable entry connector.

**RJ-0001** Same as RJ-1010, bulk pack, 72/carton.



### Video A/B Switch

**TV-0151** For permanent hook-up of cable or antenna to TV set. 70 dB isolation to prevent interference between between cable and antenna signals. All connections are 75 ohm F-type. Frequency range 5-1750 MHz. Insertion loss .75 dB Max. AC/DC passive all sides. Master pack 10.



## Cable Connectors...

### RG-6/U Connectors

**FC-5610** Fits RG-6/U coaxial cable. Requires hex crimp. **12/bag.**

**FC-0560** Same as FC-5610 in bulk pack, **1000/bag.**

**FC-5602** Same as FC-5610 except retail packaging. **2/clamshell.**

**FC-5632** Weatherproof connector. Requires hex crimp. **12/bag.**

**FC-612C** Compression weatherproof connector. Requires compression tool. **12/bag.**

### RG-59/U Connectors

**FC-5910** fits RG-59/U coaxial cable. Requires hex crimp. **12/bag.**

**FC-0591** Same as FC-5910 in bulk pack, **1000/bag.**

**FC-5902** Same as FC-5910 except retail packaging. **2/clamshell.**

**FC-5932** Weatherproof connector. Requires hex crimp. **12/bag.**

### Angle Connector

**FA-9000** right angle in-line F-connector. Bulk pack, **100/bag.** OEM

### Cable to Cable Connectors

**FS-8100** connects two coaxial cables with F-type connectors, **6/bag.**

**FS-8102** same as FS-8100 except retail packaging. **2/clamshell, 12/master.**

**FS-8200** same as FS-8100 except in bulk pack, **100/bag.** OEM



FC-5610



FC-5632



FC-5602



FC-612C



FC-5910



FA-9000



FS-8100



FS-8102



FS-8200

## 75 ohm Coaxial Cable...

**COAXIAL CABLE** Low-loss coaxial cable minimizes signal loss due to moisture and reduces termination time. Laminated aluminum foil shield provides 100% physical coverage, good flexibility and flex life at relatively low cost. Braid shield adds increased protection against interference plus good conductivity, flexibility and tensile strength.

### CUT LENGTHS - 75 ohm COAXIAL CABLE

Ready-to-use with connectors installed.

**CX-0008:** 8' RG-59 cable/connectors, Blister Pack.

**CX-0025:** 25' RG-59 cable/connectors, Display Carton.

**CX-0050:** 50' RG-59 cable/connectors, Display Carton.

**CX-0605:** 5' RG-6 cable/weatherproof connectors, Card Wrap.

**CX-0612:** 12' RG-6 cable/weatherproof connectors, Card Wrap.

**CX-0625:** 25' RG-6 cable/weatherproof connectors, Card Wrap.

**CX-0650:** 50' RG-6 cable/weatherproof connectors, Card Wrap.

**CX-6100:** 100' RG-6 cable/weatherproof connectors, Card Wrap.

### BULK CABLE

**CL-0260:** 1 Unreel Carton 1000' RG-6, 75 ohm coax cable, copper coated center conductor.

**CL-2700:** 1 Unreel Carton 1000' RG-59, 75 ohm coaxial cable.



## Line Splitters - VHF/UHF/FM

### 2-WAY (5-1000 MHz)

**SP1002** 2-way line splitter 5-1000 MHz in cast metal housing with ground connection, indoor use only. For coupling or dividing signals on 75 ohm coaxial line. All connections are F-type, connectors not included. AC/DC passive all sides. **1/bag.**  
**SP1X02** Same as SP-1002 except bulk (24). OEM



### 4-WAY (5-1000 MHz)

**SP1004** 4-way line splitter 5-1000 MHz in cast metal housing with ground connection. Indoor use only. For coupling or dividing signals on 75 ohm coaxial line. All connections are F-type, connectors not included. AC/DC passive all sides. **1/bag.**  
**SP1X04** Same as SP-1004 except bulk (24). OEM



### 2-WAY (40-2050 MHz)

**SP-2052** Same as SP-1002 except 40-2050 MHz. **1/bag.**  
**SP-2X52** Same as SP-2052, except bulk (24). OEM



### 4-WAY (40-2050 MHz)

**SP-2054** Same as SP-1004 except 40-2050 MHz. **1/bag.**



Winegard Company • 3000 Kirkwood St.

Burlington, IA 52601-2000

800/288-8094 • FAX 319/754-0787

www.winegard.com

Printed in U.S.A. © 2003 Winegard Company Rev. 9/11 WC-750