

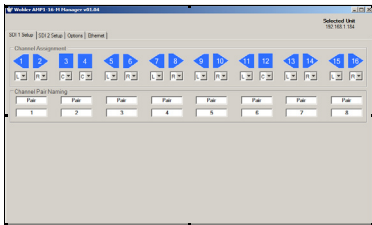
AMP1-16-M

Dual Input 3G/HD/SD-SDI 16-Channel Audio Monitor



Compact, low-cost unit to select and monitor up to 16 audio channels from either of two 3G/HD/SD-SDI inputs

PC Control and Configuration



Intuitive PC software makes it easy to configure, store and load presets

The AMP1-16-M offers fast, intuitive operation for monitoring SDI audio in the most demanding production applications. Whether in the studio or on the road, the AMP1-16-M provides instantaneous selection and summing of any grouping of SDI audio pairs. It features adjustable volume and balance controls, clear display of levels, and phase indications on bright 2.4" LED-backlit LCD displays with configurations that can be created, saved and recalled via Ethernet or USB flash drive using an intuitive PC interface.

Features

- Simultaneous level metering of 16 de-embedded audio channels from SDI
- High resolution metering with 166-segment displays
- Quick, intuitive push-button selection of any pairs to sum to monitor
- Monitor through built-in speakers, headphones or analog outputs with optional muting for internal speakers
- Stereo or mono monitoring
- Stereo phase indicators
- Adjustable Volume and Balance
- Adjustable Channel Trim
- Easy update and management software for PCs
- Balanced stereo analog outputs on XLR-Ms. Fixed level or volume/balance controlled.
- Automatic frame rate detection and selection
- Totally digital system architecture with high fidelity Class D amp
- Selectable line level or front panel volume control and outputs
- Shallow chassis depth for easy installation in OB vehicles and consoles



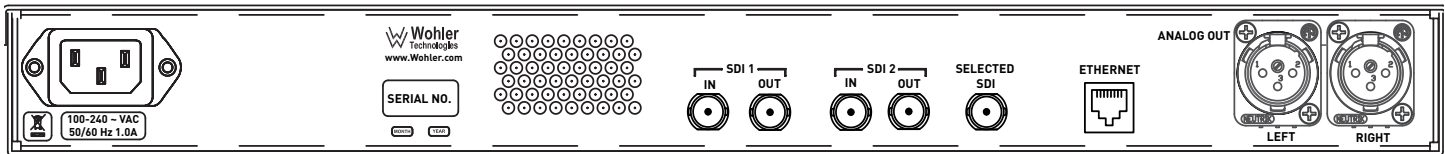
Order Part Number

AMP1-16-M: 8130-0400

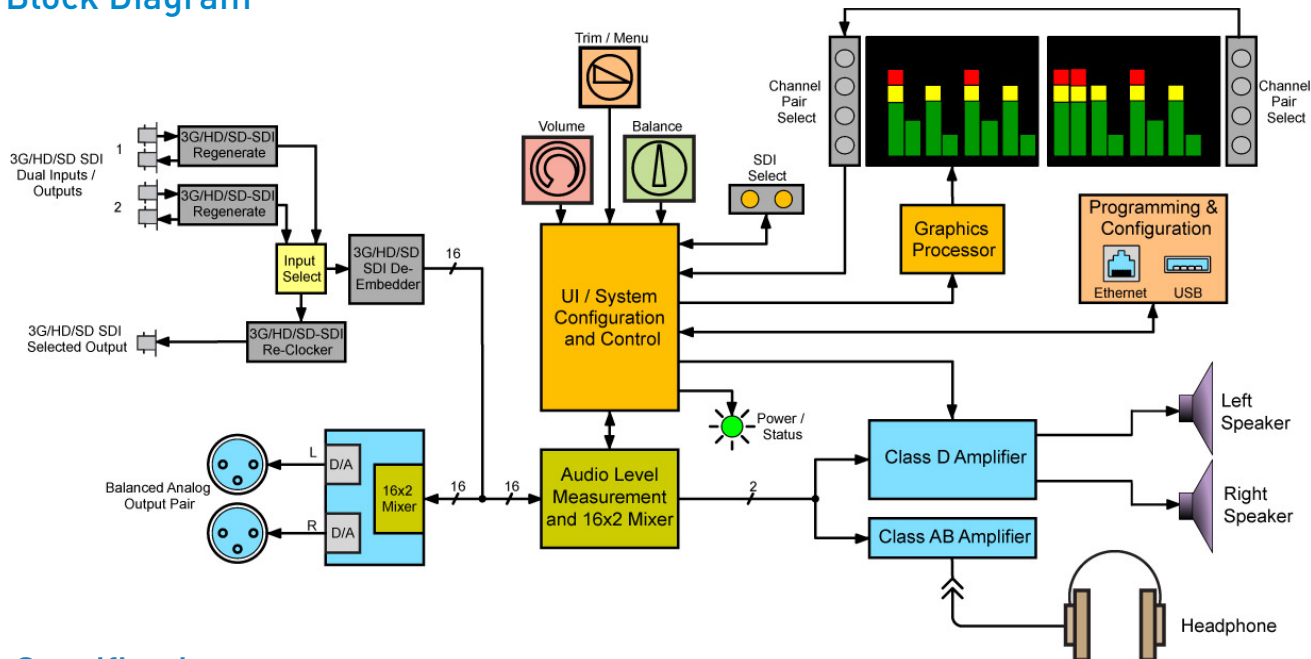
AMP1-16-M

Dual Input 3G/HD/SD-SDI 16-Channel Audio Monitor

Rear Panel



Block Diagram



Specifications

Inputs	Two 3G/HD/SD-SDI Inputs on BNC
Outputs	Two loop-through SDI Outputs on BNC Selected SDI Re-clocked Output on BNC Balanced stereo analog out on XLR-M
Interfaces	External PC control via Ethernet port Front panel USB port for preset storage/transfer
Front Panel Displays	Two 2.4" LED-backlit LCDs
Level Metering	Simultaneous average and PPM
Acoustic Frequency Response	150 Hz to 16 kHz (+- 5 dB) acoustic • 40 Hz to 20 kHz (+- 1dB) electrical
Peak Acoustic Output	90 dB SPL at 2 feet
Power Output	6 W RMS per side, 12 W peak
Hum and Noise	Better than -68 dB below full output
Power	IEC connector 100 to 240 VAC ± 10%, 50/60Hz 60 W; self-contained power supply
Dimensions (W x H x D)	4.25" x 19" x 1.75" (108 mm x 483 mm x 44 mm)
Shipping Weight/Net Weight	7 lbs (3.2 kg) / 5 lbs (2.8 kg)

Wohler Technologies, Inc.
Worldwide Headquarters
31055 Huntwood Avenue
Hayward, CA 94544 USA
Phone: +1 510 870 0810
Email: sales@wohler.com

Wohler Technologies/APAC
45/F, The Lee Gardens
33 Hysan Avenue
Causeway Bay, Hong Kong
Phone: +852 8199 0563
Email: sales@wohler.com

Wohler Technologies/EMEA
Suite 3, Medaxon House
Mill Mead, Staines
TW18 4UQ, UK
Phone: +44 (0) 2071 935507
Email: sales@wohler.com

Infinite Possibilities.  One Wohler.