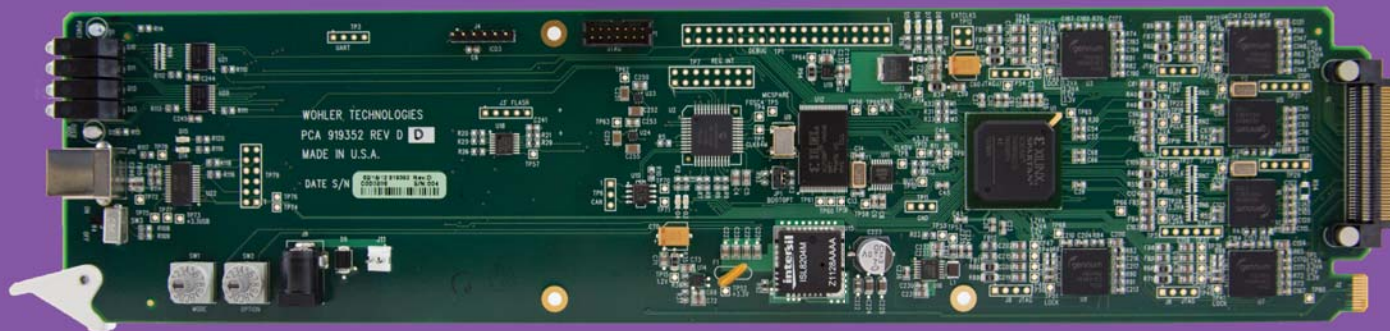


608/708 to OP-47/WST Translating Captioning Solution

HDCC-708xWST-OG2 and HDCC-708xWST-2CH



Translate, decode, and monitor closed caption data accurately and efficiently across the transmission chain



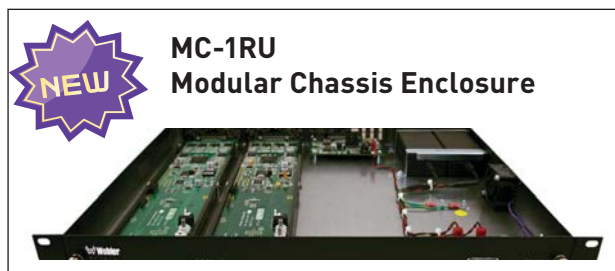
The HDCC-708xWST-OG2 and HDCC-708xWST-2CH standards translation cards are the first single card-based product to provide real time, on-the-fly closed caption standards translation. They translate 608/708 captions from one video signal into WST/OP-47 captions in another video signal. The openGear® form factor card can be operated in industry standard Ross openGear frames or in the Wohler MC-1RU modular chassis.

These cards also decode incoming source captions, output caption data over enhanced Ethernet or from an RS-232 port, and provide a monitoring signal with burned-in captions to the secondary output for each channel.

They boast true, dual independent HD/SD channels, each with a separate monitoring output and both with automatic detection of input video standards. Channel A has an CEA 608/708 caption encoder and Channel B has a WST/OP-47 encoder, both of which accept industry standard encoding data via Ethernet or serial. In addition to providing encoding and decoding of four GPI cues, the new cards offer eight on-board GPIs and GPOs to enable greater control of downstream systems.

Features/Benefits

- Cost-effective dual channel translating/decoding/encoding solution
- Supports Grand Alliance, SMPTE333, CDP, and E470 protocols (608/708) and Newfor (WST/OP-47)
- Relay bypass of both video inputs
- Compliant with all broadcast HD/SD-SDI video standards
- Synchronous serial and Ethernet output of caption data
- Supports synchronous GPI broadcast cues
- OpenGear® Dashboard™ management software provides remote management capabilities (-OG2 version only)



**MC-1RU
Modular Chassis Enclosure**

The new Wohler MC-1RU modular chassis enclosure supports the Wohler family of MC-1RU Series cards. This self-contained 1RU cabinet holds up to two cards, offering up to four independent video channels.

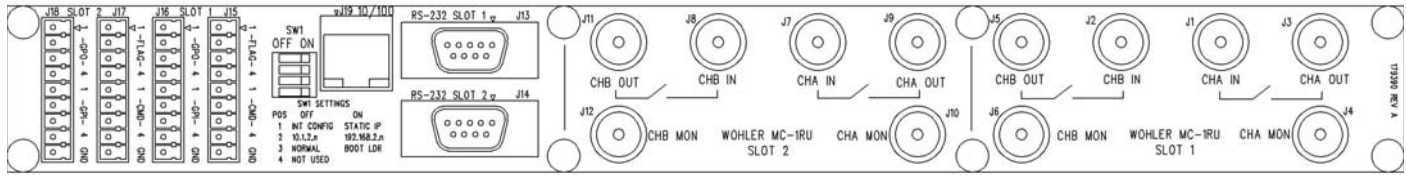
Order Part Numbers:

HDCC-WSTx708-OG2:	8091-0265	(openGear® frame)
HDCC-WSTx708-2CH:	829265	(MC-1RU frame)
MC-1RU Frame:	8140-0100	

608/708 to OP-47/WST Translating Captioning Solution

HDCC-708xWST-OG2 and HDCC-708xWST-2CH

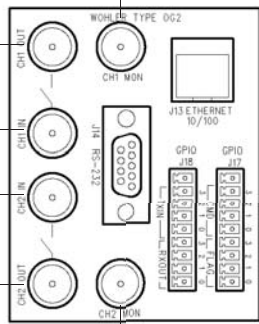
MC-1RU Rear Panel (Accepts One or Two HDCC Cards)



Monitoring Outputs

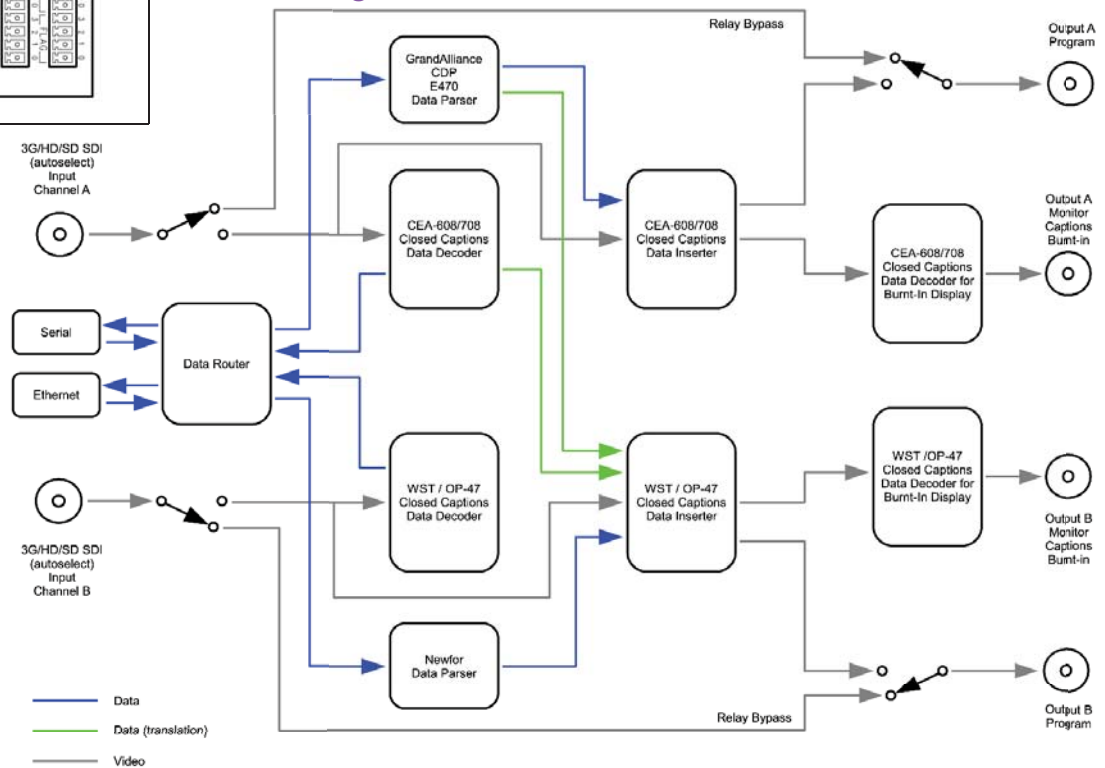
Closed Caption Outputs

HD/SD-SDI Inputs



OG2 Rear Panel

Block Diagram



Specifications

Frame/Chassis	Ross DFR-8321 • Wohler MC-1RU
Shipping Weight	1 lb (.45 kg)
Dimensions (HxWxD)	3.1" x 12.6" x 0.75" (79 mm x 320 mm x 19 mm)
Power Requirements	Receives power from frame: 15V max
Power Consumption	Nominally 10 W
Signals Accepted	HD/SD-SDI
SDI Inputs	Two HD/SD-SDI on BNC Relay-Bypassed to Outputs
SDI Outputs	Two HD/SD-SDI Outputs Two HD/SD-SDI Monitoring Outputs on BNC

openGear® and DashBoard® are registered trademarks of Ross Video

Wohler Technologies, Inc.
Worldwide Headquarters
31055 Huntwood Avenue
Hayward, CA 94544 USA
Phone: +1 510 870 0810
Fax: +1 510 870 0811
Email: sales@wohler.com

Wohler Technologies/APAC
45/F, The Lee Gardens
33 Hysan Avenue
Causeway Bay, Hong Kong
Phone: +852 3180 2240
Fax: +852 3180 2299
Email: salesasia@wohler.com

Wohler Technologies/EMEA
Suite 3
Medaxon House
Mill Mead, Staines TW18 4UQ, UK
Phone: +44 (0) 1784 779815
Email: salesEMEA@wohler.com