



USB AUDIO INTERFACE

AUDIOGRAM 6

Owner's Manual
Bedienungsanleitung
Mode d'emploi
Manual de instrucciones
Руководство пользователя
取扱説明書



English

Deutsch

Français

Español

Русский

日本語

EN
DE
FR
ES
RU
JA

COMPLIANCE INFORMATION STATEMENT (DECLARATION OF CONFORMITY PROCEDURE)

Responsible Party : Yamaha Corporation of America
Address : 6600 Orangethorpe Ave., Buena Park, Calif. 90620
Telephone : 714-522-9011
Type of Equipment : COMPUTER RECORDING SYSTEM
Model Name : AUDIOGRAM 6

This device complies with Part 15 of the FCC Rules.

Operation is subject to the following two conditions:

- 1) this device may not cause harmful interference, and
 - 2) this device must accept any interference received including interference that may cause undesired operation.
- See user manual instructions if interference to radio reception is suspected.

* This applies only to products distributed by YAMAHA CORPORATION OF AMERICA.

(FCC DoC)

FCC INFORMATION (U.S.A.)

1. IMPORTANT NOTICE: DO NOT MODIFY THIS UNIT!

This product, when installed as indicated in the instructions contained in this manual, meets FCC requirements. Modifications not expressly approved by Yamaha may void your authority, granted by the FCC, to use the product.

2. IMPORTANT:

When connecting this product to accessories and/or another product use only high quality shielded cables. Cable/s supplied with this product MUST be used. Follow all installation instructions. Failure to follow instructions could void your FCC authorization to use this product in the USA.

3. NOTE:

This product has been tested and found to comply with the requirements listed in FCC Regulations, Part 15 for Class "B" digital devices. Compliance with these requirements provides a reasonable level of assurance that your use of this product in a residential environment will not result in harmful interference with other electronic devices. This equipment generates/uses radio frequencies and, if not installed and used according to the instructions found in the users manual, may cause interference harmful to the operation of other electronic devices. Compliance

with FCC regulations does not guarantee that interference will not occur in all installations. If this product is found to be the source of interference, which can be determined by turning the unit "OFF" and "ON", please try to eliminate the problem by using one of the following measures:

Relocate either this product or the device that is being affected by the interference.

Utilize power outlets that are on different branch (circuit breaker or fuse) circuits or install AC line filter/s.

In the case of radio or TV interference, relocate/reorient the antenna. If the antenna lead-in is 300 ohm ribbon lead, change the lead-in to co-axial type cable.

If these corrective measures do not produce satisfactory results, please contact the local retailer authorized to distribute this type of product. If you can not locate the appropriate retailer, please contact Yamaha Corporation of America, Electronic Service Division, 6600 Orangethorpe Ave, Buena Park, CA90620

The above statements apply ONLY to those products distributed by Yamaha Corporation of America or its subsidiaries.

* This applies only to products distributed by YAMAHA CORPORATION OF AMERICA.

(class B)

이 기기는 가정용(B급) 전자파적
합기기로서 주로 가정에서 사용하는 것을 목적
으로 하며, 모든 지역에서 사용할 수 있습니다.

(class b korea)

PRECAUTIONS

PLEASE READ CAREFULLY BEFORE PROCEEDING

* Please keep this manual in a safe place for future reference.



WARNING

Always follow the basic precautions listed below to avoid the possibility of serious injury or even death from electrical shock, short-circuiting, damages, fire or other hazards. These precautions include, but are not limited to, the following:

Do not open

- Do not open the device or attempt to disassemble the internal parts or modify them in any way. The device contains no user-serviceable parts. If it should appear to be malfunctioning, discontinue use immediately and have it inspected by qualified Yamaha service personnel.

Water warning

- Do not expose the device to rain, use it near water or in damp or wet conditions, or place containers on it containing liquids which might spill into any openings. If any liquid such as water seeps into the device, unplug the USB cable from this device immediately. Then have the device inspected by qualified Yamaha service personnel.
- Never insert or remove a USB cable with wet hands.



CAUTION

Always follow the basic precautions listed below to avoid the possibility of physical injury to you or others, or damage to the device or other property. These precautions include, but are not limited to, the following:

Location

- Before moving the device, remove all connected cables.
- Avoid setting all volume controls to their maximum. Depending on the condition of the connected devices, doing so may cause feedback and may damage the speakers.
- Do not expose the device to excessive dust or vibrations, or extreme cold or heat (such as in direct sunlight, near a heater, or in a car during the day) to prevent the possibility of panel disfiguration or damage to the internal components.
- Do not place the device in an unstable position where it might accidentally fall over.
- Do not use the device in the vicinity of a TV, radio, stereo equipment, mobile phone, or other electric devices. Doing so may result in noise, both in the device itself and in the TV or radio next to it.

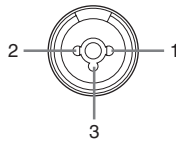
Connections

- Before connecting the device to other devices, turn off the power for all devices. Before turning the power on or off for all devices, set all volume levels to minimum.

Handling caution

- When turning on the AC power in your audio system, always turn on monitor speakers LAST, to avoid speaker damage. When turning the power off, monitor speakers should be turned off FIRST for the same reason.
- Do not insert your fingers or hands in any gaps or openings on the device.
- Avoid inserting or dropping foreign objects (paper, plastic, metal, etc.) into any gaps or openings on the device. If this happens, unplug the USB cable from the device immediately. Then have the device inspected by qualified Yamaha service personnel.
- Do not use the device or headphones for a long period of time at a high or uncomfortable volume level, since this can cause permanent hearing loss. If you experience any hearing loss or ringing in the ears, consult a physician.
- Do not rest your weight on the device or place heavy objects on it, and avoid use excessive force on the buttons, switches or connectors.

MIC/INST jacks (XLR-type) are wired as follows (IEC60268 standard): pin 1: ground, pin 2: hot (+), and pin 3: cold (-).



Yamaha cannot be held responsible for damage caused by improper use or modifications to the device, or data that is lost or destroyed.

Always unplug the USB cable from a computer or turn off the computer to turn off the device when the device is not in use.

The performance of components with moving contacts, such as switches, volume controls, and connectors, deteriorates over time. Consult qualified Yamaha service personnel about replacing defective components.

Specifications and descriptions in this owner's manual are for information purposes only. Yamaha Corp. reserves the right to change or modify products or specifications at any time without prior notice. Since specifications, equipment or options may not be the same in every locale, please check with your Yamaha dealer.

SPECIAL NOTICES

- This manual is the exclusive copyright of Yamaha Corporation.
- Copying of the software or reproduction of this manual in whole or in part by any means is expressly forbidden without the written consent of the manufacturer.
- Yamaha makes no representations or warranties with regard to the use of the software and documentation and cannot be held responsible for the results of the use of this manual and the software.
- This disk containing the software is not meant for use with an audio/visual system (CD player, DVD player, etc.). Do not attempt to use the disk on equipment other than a computer.
- Future upgrades of application and system software and any changes in specifications and functions will be announced separately.
- The screen displays as illustrated in this manual are for instructional purposes, and may appear somewhat different from the screens which appear on your computer.

The illustrations and LCD screens as shown in this manual are for instructional purposes only, and may appear somewhat different from those on your instrument.

This product incorporates and bundles computer programs and contents in which Yamaha owns copyrights or with respect to which it has license to use others' copyrights. Such copyrighted materials include, without limitation, all computer software, music data, etc. Any unauthorized use of such programs and contents outside of personal use is not permitted under relevant laws. Any violation of copyright has legal consequences. DON'T MAKE, DISTRIBUTE OR USE ILLEGAL COPIES.

- Windows is a registered trademark of Microsoft® Corporation in the United States and other countries.
- Apple, Mac and Macintosh are trademarks of Apple Inc., registered in the U.S. and other countries.
- The company names and product names in this manual are the trademarks or registered trademarks of their respective companies.

Introduction

Thank you for choosing a Yamaha AUDIOGRAM 6 Computer Recording System. The AUDIOGRAM 6 is a USB audio interface for digital audio recording. With the AUDIOGRAM 6 and your personal computer you have the basic elements of a high-performance computer recording system that is easy to set up and operate. Please read through this manual carefully before beginning use, so that you will be able to take full advantage of your interface's superlative features and enjoy trouble-free operation for years to come. After reading the manual, please store it in a safe place.

Contents

Introduction.....	5
Contents	5
Features	6
Setup.....	7
Quick Guide	8
1. Cubase AI Download.....	8
2. Connecting to the AUDIOGRAM interface	8
3. Powering Up the System.....	9
4. Adjusting Level	9
5. Audio Setup of the Software.....	10
Controls and Functions	12
Input Signal Flow.....	13
Troubleshooting	14
Specifications	20
General Specifications	20
Dimensional Diagrams	20
Block Diagram and Level Diagram	21

Features

Connect To Your Computer via a Single USB Cable (page 8)

The AUDIOGRAM interface connects to your computer via the supplied USB cable. Stereo audio data is transferred in both directions—from the interface to the computer, and vice-versa—via the USB connection (44.1 kHz or 48 kHz sampling frequency).

No Driver Installation Required (page 8)

The AUDIOGRAM system uses the standard drivers included in your computer's operating system, so there's no need to install any extra driver software.

Compression (page 13)

Compression increases the overall level without introducing distortion by compressing excessive peaks in the signals from microphones and guitars.

48V Phantom Power (page 13)

A PHANTOM switch supplies +48V phantom power to the channel 1 microphone input, so you can use high-quality phantom-powered condenser microphones for superior recording quality.

Accessories

- Cubase AI Download Instructions
- USB cable
- Owner's Manual (this book)

Setup

Be sure to turn the PHANTOM +48V switch (★) on when using a phantom-powered condenser microphone.

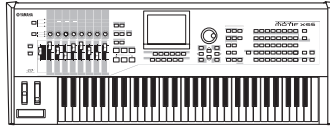
Microphone



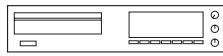
Guitar



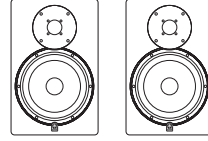
Keyboard, etc.



CD player



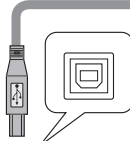
Powered speakers



Headphones



USB cable

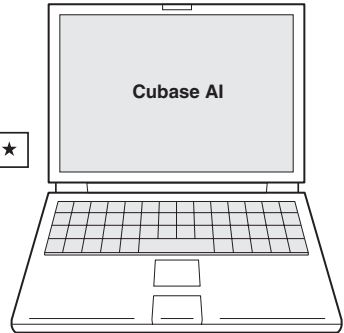
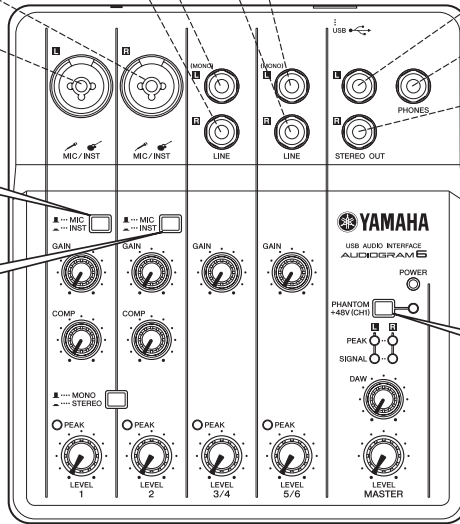


To connect a device such as a microphone:

MIC (M)

To connect an instrument such as an electric guitar or bass:

INST (I)



Computer

Quick Guide

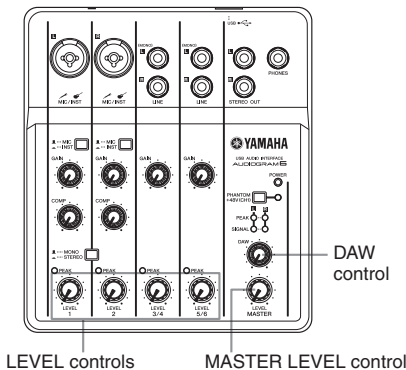
This quick setup and operation guide covers operations from downloading the Cubase AI software to setting up the audio configuration in the software. While going through this section you might find it useful to also refer to the “Controls and Functions” section on page 12, as well as the pdf manual supplied with the Cubase AI software.

Step 1 Cubase AI Download

We are offering Cubase AI free for downloading via website, specifically for customers who have purchased Audiogram series. For detailed instructions on downloading, access the URL shown in the Cubase AI Download Instructions leaflet.

Step 2 Connecting to the AUDIOGRAM interface

- 1 Turn all gear that is to be connected to the AUDIOGRAM off or to standby mode (except the computer), and set the LEVEL controls, MASTER LEVEL control and DAW control to their minimum settings.

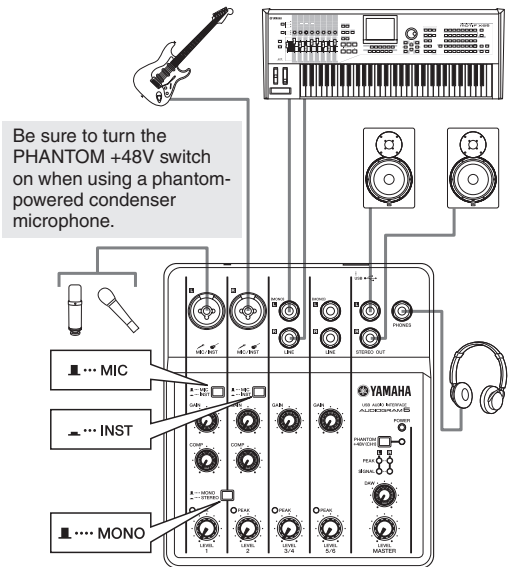


- 2 Connect microphones and/or instruments.

For details on making connections refer to the “Setup” section on page 7 and the “Controls and Functions” section on page 12.

- 3 Set the MIC/INST switch according to the type of device connected to channel 1 or 2. Select MIC () if a microphone is connected, or INST () if a guitar or similar instrument is connected.

- 4 To use channels 1 and 2 as independent mono channels set the MONO/STEREO switch to MONO (). To use channels 1 and 2 as a stereo pair set the switch to STEREO ().



Step

3 Powering Up the System

To prevent loud pops and noises, turn on the power to your sound gear starting with the sources (instruments, CD players, etc.) and ending with the monitor speakers (powered speakers).

- 1 Turn on the instruments and microphones.
- 2 If you are using a condenser microphone for the channel 1, turn on the PHANTOM +48V switch.



Observe the following precautions when turning on phantom power.

- Make sure that the PHANTOM +48V switch is off when phantom power is not needed.
- When turning the switch on, be sure that only a condenser microphone is connected to the channel 1 MIC/INST input jack. Other devices may be damaged if connected to phantom power. This precaution does not apply to balanced dynamic microphones or instruments with the phone jack, however, as these will not be affected by phantom power.
- To prevent damage to speakers, be sure to turn off power amplifiers (or powered speakers) before turning this switch on or off. We also recommend that you set the MASTER LEVEL control to the minimum position before operating this switch to avoid the risk of loud noises that could cause hearing loss or device damage.

- 3 Connect the AUDIOGRAM interface to your computer using the supplied USB cable. The POWER indicator will light to indicate that power is being applied to the AUDIOGRAM interface.

USB Connection Precautions

Be sure to observe the following points when connecting to the computer's USB interface.

Failure to observe these rules can result in computer freezes/hang-ups and possibly data loss or corruption. If the instrument or computer does hang up, restart the application or computer.



- Be sure to wake the computer from sleep/suspended/standby mode before making a connection to the computer's USB connector.
- Always quit all applications running on the computer before connecting or disconnecting the USB cable.
- Wait at least 6 seconds between connecting or disconnecting the USB cable.



When connecting or disconnecting the USB cable be sure to turn the DAW control and the MASTER LEVEL control all the way down.

NOTE

The first time you connect to the computer's USB connector, or change the connection to a different USB port, a driver installation display may appear. If this occurs, wait until the installation is complete before proceeding.

- 4 Turn the power to the monitor speakers (powered-speakers).

Step

4 Adjusting Level

- 1 Set the GAIN controls to the minimum position and the LEVEL controls to about 1 o'clock.

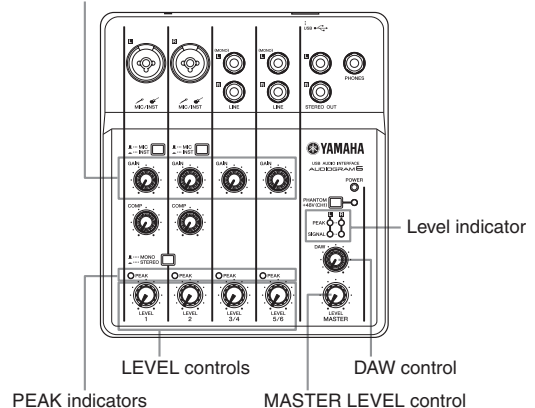


Set the MASTER LEVEL control to the minimum position. Failure to do so may result in loud noise bursts that can damage your equipment, your ears, or both.

- 2 Adjust the volume on all instruments that are connected to the AUDIOGRAM interface.
- 3 Adjust the channel GAIN controls so that the corresponding PEAK indicators flash briefly on the highest peak levels.
- 4 Adjust the overall volume with the MASTER LEVEL control while monitoring via headphones or monitor speakers.

Lower the volume using the LEVEL controls until the level indicator PEAK LEDs flash only briefly on occasional high-level peaks or not at all.

GAIN controls



Step 5 Audio Setup of the Software

This section describes the procedure for audio setup of the Cubase AI software.

NOTE Cubase AI 6 is used for the examples in this manual. For details about other versions of Cubase AI or Cubase AI operation in general, refer to the PDF manual provided with the software.

Cubase AI Setup

1 Set the computer output to the maximum level.

For details on how to make the setting refer to the “The recorded sound is too low in level.” section in the “Troubleshooting” on page 14.

2 Launch Cubase AI.

Windows:

Click [Start] → [All Program] → [Steinberg Cubase AI *] → [Cubase AI *] to launch the program. (“*” indicates where the version number appears in the actual icon name.)

NOTE If the ASIO Direct Sound Full Duplex Driver dialog window appears, click [OK].

Mac:

Double-click the [Application] → [Cubase AI*]. (“*” indicates where the version number appears in the actual icon name.)

NOTE

- If you specified a file destination when installing the Cubase AI software, launch the application from that location.
- Create a Cubase AI shortcut or alias on your desktop so you can easily launch the program when required.

3 When the Project Assistant window appears, select the [More] menu → [Empty] and click [Create].



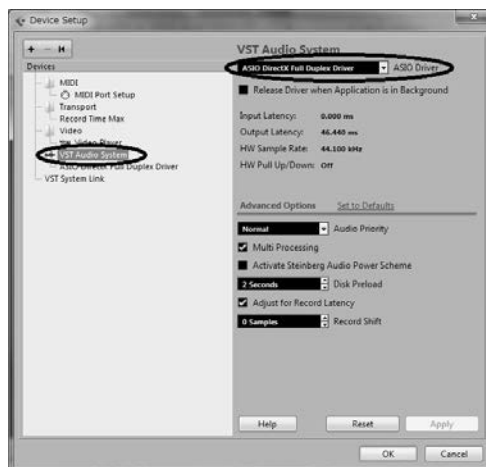
A new project is created.

NOTE Recorded Cubase AI data is stored as a “Project.”

4 Select [Device Setup] from the [Devices] menu to open the Device Setup window.

Windows:

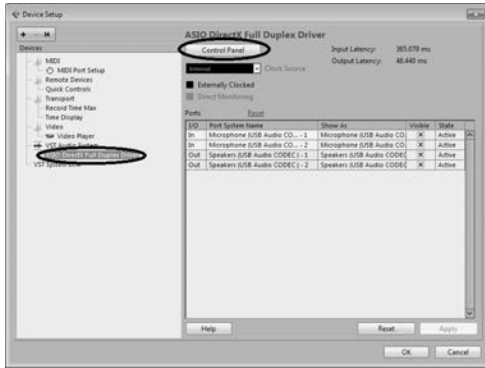
Select [VST Audio System] in the [Devices] field on the left side of the window. Select [ASIO DirectX Full Duplex Driver] in the [ASIO Driver] field on the right side of the window. A dialog box will appear asking “Do you want to switch the ASIO driver?”. Click [Switch].



Mac:

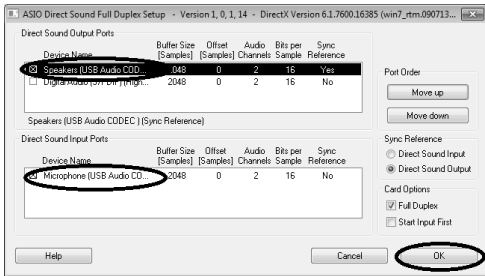
Select [VST Audio System] in the [Devices] field on the left side of the window. Select [USB Audio CODEC] in the [ASIO Driver] field on the right side of the window. A dialog box will appear asking “Do you want to switch the ASIO driver?”. Click [Switch].

5 Select [ASIO DirectX Full Duplex Driver](Windows), [USB Audio CODEC](Mac) in the [Devices] field on the left side of the Device Setup window, and click [Control Panel] on the right side of the window.



Windows:

The ASIO Direct Sound Full Duplex Setup dialog box will be displayed. Check only the input port and output port [USB Audio CODEC] checkbox, and then click [OK] to close the dialog window.

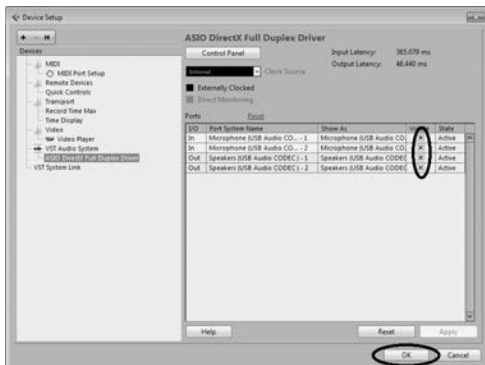


Mac:

The [CoreAudio Device Settings] dialog window appears. Check only the [USB Audio CODEC] checkbox in both “Input” and “Output” of the [Input/Output Configuration] field. Click [Close] to close the dialog window.

- 6 Make sure that “USB Audio CODEC 1/2”(Windows), “Front Left/Front Right” (Mac) are shown in the [Port System Name] field, and check the [Visible] column in the Device Setup window. Click [OK] to close the window.

NOTE If the [Port System Name] field does not change, close and restart the Cubase AI, then open the Device Setup window.



- 7 Select [VST Connections] from the [Devices] menu.

Windows:

If “Not Connected” is selected in the [Audio Device] field, click on the “Not Connected” indication, and then switch to [ASIO DirectX Full Duplex Driver]. Also set the [Outputs] in the same way, and then close the window.



Mac:

If “Not Connected” is selected in the [Audio Device] field, click on the “Not Connected” indication, and then switch to [USB Audio CODEC]. Also set the [Outputs] in the same way, and then close the window.

- 8 Select [Add Track] → [Audio] from the [Project] menu.

The Add Audio Track dialog window appears.

- 9 Set the “Count” and “Configuration” parameters, and then click [Add Track].

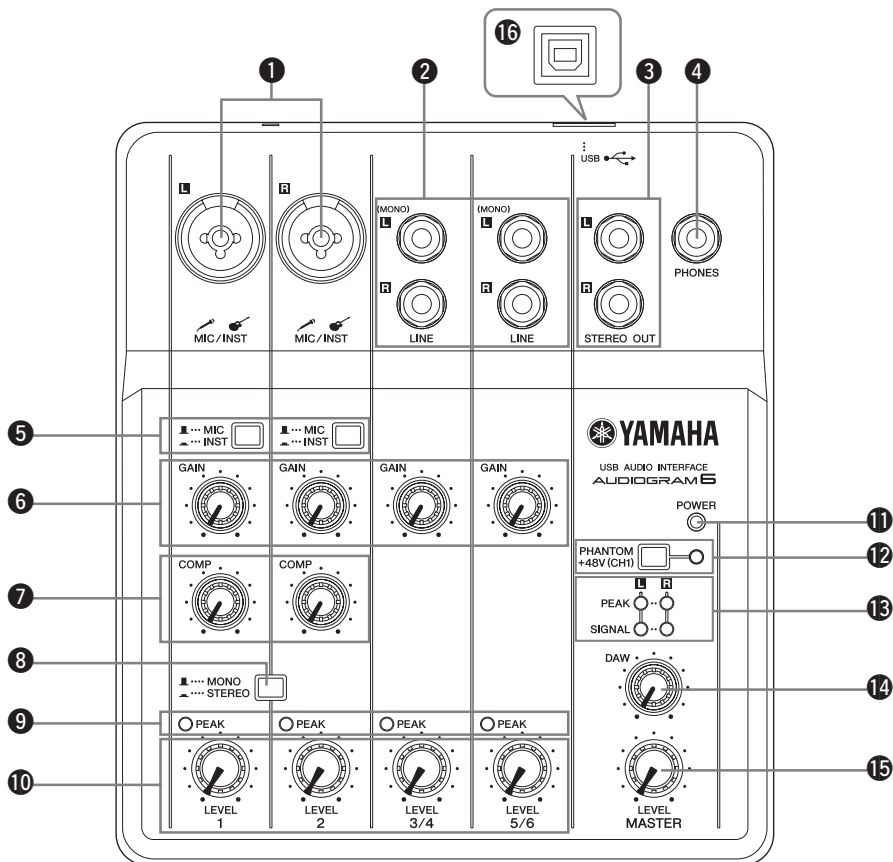


The added tracks will appear.

NOTE You will normally use a stereo track when recording synthesizers, and a monaural track when recording vocals or guitars.

Recording with maximum quality and minimum noise:
 For optimum sound quality with minimum noise, the AUDIOGRAM signal levels should be set as high as possible without clipping. Check signal levels to be sent to Cubase AI for recording using the AUDIOGRAM level indicators while the DAW control is set to minimum. Adjust the channel LEVEL controls so that the corresponding PEAK LEDs flash only occasionally on the highest input transients.

Controls and Functions



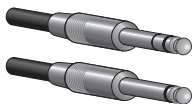
1 MIC/INST Input Jack

Microphones and instruments such as guitars can be connected here using XLR or phone jack cables. Set the MIC/INST switch 5 to MIC or INST according to the type of device connected.

XLR-type



Phone-type



NOTE You can directly connect an electric guitar or bass without the need for a separate DI (Direct Injection) box or amp simulator.

2 LINE Input Jacks (L (MONO)/R)

These inputs are intended mainly for use with instruments and equipment having stereo outputs, such as a synthesizer or CD player. If you connect to the L (MONO) jack only, the AUDIOGRAM will recognize the signal as monaural and will send the identical signal to both the L and R jacks.

Phone-type



3 STEREO OUT Jacks

These output the mixed signal from channels 1 to 5/6. The output level can be adjusted using the MASTER LEVEL control. These jacks would typically be connected to monitor speakers (powered speakers).

4 PHONES Jack

Connects a pair of headphones to this jack. The PHONES jack outputs the same signal as the STEREO OUT jacks.

5 MIC/INST Switch

Set this switch according to the type of device connected. Select MIC (■) if a microphone is connected, or INST (▬) if an electric guitar or bass is connected.

NOTE If a device is not connected to the MIC/INST jack, set this switch to MIC (■). Otherwise noise may occur.

6 GAIN Control



Adjusts the input signal level. To achieve the best balance between S/N ratio and dynamic range, adjust the level so that the input channel PEAK indicator 9 lights only occasionally and briefly on the highest input transients.

7 COMP Control

Adjusts the amount of compression applied to the channel. As the knob is turned to the right, the interface automatically raises the compression ratio while adjusting the output gain accordingly. The result is smoother, more even dynamics because louder signals are attenuated while the overall level is boosted.

NOTE Avoid setting the compression too high, as the higher average output level that results may lead to feedback.

8 MONO/STEREO Switch

This switch allows channels 1 and 2 to be used either as separate mono channels or as a stereo pair. When set to MONO (), channels 1 and 2 function as independent mono channels feeding both the L and R STEREO OUT jacks **3**. When set to STEREO (), input channels 1 and 2 function as a stereo pair: the channel 1 signal feeds the L STEREO OUT jack and the channel 2 signal feeds the R STEREO OUT jack.

9 PEAK Indicators

The PEAK indicators light when the channel signal reaches or exceeds clipping level. Note that signal levels as indicated by the PEAK indicators are affected by both the GAIN and LEVEL controls. If a PEAK indicator lights, adjust the GAIN **6** and COMP **7** controls to lower the level so that the indicator goes out.


10 LEVEL Controls

Adjusts the level of the channel signal. Use these controls to adjust the balance between the various channels.


11 POWER Indicator

This indicator lights when power is applied to the AUDIOGRAM interface via the USB cable (supplied) that connects it to the computer.

12 PHANTOM +48V (CH1) Switch/Indicator (only for channel 1)

This switch toggles phantom power on and off. If you set the switch on (), the AUDIOGRAM supplies phantom power to channel 1 MIC/INST jack (XLR-type) **1**. Turn this switch on when using a phantom-powered condenser microphone.



- Be sure to leave this switch off () if you do not need phantom power.
- When turning the switch on, be sure that only a condenser microphone is connected to the channel 1 MIC/INST input jack. Other devices may be damaged if connected to phantom power. This precaution does not apply to balanced dynamic microphones or instruments with the phone jack, however, as these will not be affected by phantom power.
- To prevent damage to speakers, be sure to turn off power amplifiers (or powered speakers) before turning this switch on or off. We also recommend that you set the MASTER LEVEL control to the minimum position. Neglect of these precautions may result in large noise bursts that may damage your equipment, your ears, or both.

13 Level Indicators

These indicators show signal levels prior to the MASTER LEVEL control **15**. The SIGNAL LED lights when a signal is present, and the PEAK LED lights when the signal reaches or exceeds clipping level. Adjust the input channel LEVEL controls **10** so that the PEAK LEDs flash only briefly on occasional high-level peaks or not at all.

14 DAW Control

Adjusts the level of the signal received from Cubase AI sent to the AUDIOGRAM STEREO OUT jacks **3**.

15 MASTER LEVEL Control

Adjusts the signal level sent to the STEREO OUT jacks **3**. This allows you to adjust the overall volume without changing the relative volume balance among the channels.

16 USB Connector

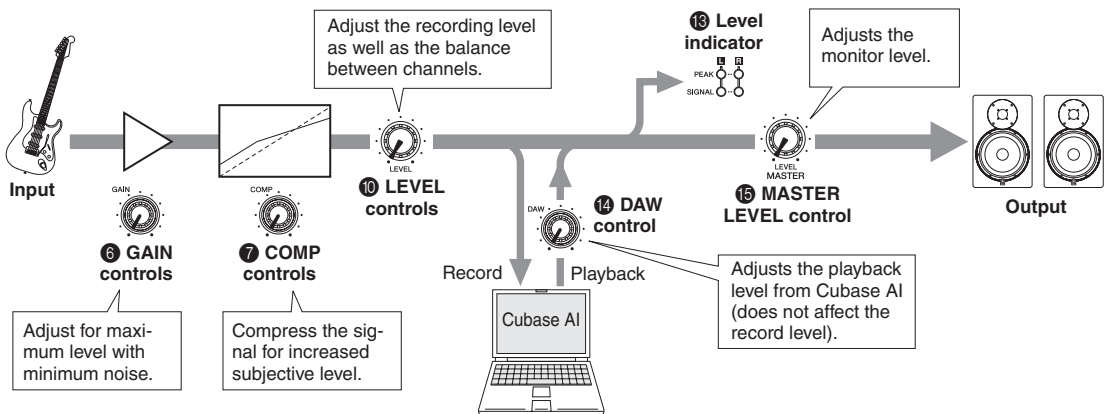
Connects the AUDIOGRAM interface to a USB port on your computer via the supplied USB cable. In addition to transferring audio data between the AUDIOGRAM interface and the computer, the USB cable supplies power from the computer to the AUDIOGRAM interface.



When connecting or disconnecting the USB cable be sure to turn the DAW control and the MASTER LEVEL control all the way down.

NOTE Yamaha recommends that you use a USB cable with a length of 1.5 meter or less.

Input Signal Flow



Troubleshooting

The AUDIOGRAM interface won't turn on.

- ❑ Is the included USB cable properly plugged into the interface and a computer?

The system doesn't work properly.

- ❑ Are the USB cable and all necessary audio cables properly connected?
- ❑ Are you using a USB hub?
USB hubs can interfere with proper operation, so try connecting the AUDIOGRAM interface directly to a USB port on the computer. If the computer has multiple USB ports, try a different USB port.
- ❑ Are you using other USB devices at the same time?
If so, try removing the other device(s) and connecting only the Yamaha USB device.

The input ports are not shown (Windows 8/7/Vista)

- ❑ Is the sound input of your computer operating system assigned properly?
 1. Double-click the "Sound" icon in the [Control Panel] to open the "Sound" dialog window.
 2. Click the "Recording" tab, right-click the "USB Audio CODEC" icon and select "Properties."
 3. Click the "Advanced" tab, then select "2 channel, 16 bit, 44100 Hz (CD Quality)" or "2 channel, 16 bit, 48000 Hz (DVD Quality)" in the "Default Format" field.

No sound.

- ❑ Are your speaker cables connected properly, or are they shorted?
- ❑ Are the volume controls of your sources, audio devices, applications software, computer operating system, etc., set at appropriate levels?
- ❑ Is the output of your computer operating system muted?
- ❑ Do you have several applications running at the same time?
Be sure to quit all applications you are not using.
- ❑ Is the sound output of your computer operating system assigned properly?

Windows 8/7/Vista:

1. Double-click the "Sound" icon in the [Control Panel] to open the "Sound" dialog window.
2. Click the "Playback" tab and check whether the "USB Audio CODEC" icon is checked.
If not, right-click the "USB Audio CODEC" icon and select "Set as Default Device."
3. Click the [Recording] tab and check whether the "USB Audio CODEC" icon is checked.
If not, right-click the "USB Audio CODEC" icon and select "Set as Default Device."

Windows XP:

1. From the [START] menu click [Control Panel], then double-click the "Sounds and Audio Devices" icon to open the "Sounds and Audio Devices Properties" dialog window.
2. Click the "Audio" tab.
3. Set "Sound playback: Default device" and "Sound recording: Default device" to "USB Audio CODEC."
4. Click [OK].

Mac:

1. Select "System Preferences ..." from the Apple menu and then select "Sound" to open the "Sound" dialog window.
 2. Click the "Input" tab and under "Choose a device for sound input" select "USB Audio CODEC".
 3. Click the "Output" tab and under "Choose a device for sound output" select "USB Audio CODEC".
- ❑ Is the sound output of the Cubase AI application assigned properly?
For setup details refer to page 8 of the Quick Guide.

The recorded sound is too low in level.

- ❑ Is the computer's output level setting too low?
We recommend that you set the computer output to the maximum level and mute the computer's internal speaker.

Windows 8/7/Vista:

1. Double-click the "Sound" icon in the [Control Panel] to open the "Sound" dialog window.
2. Click the "Playback" tab, right-click the "USB Audio CODEC" icon and select "Properties".
3. Click the "Levels" tab, then set the volume slider to its maximum level.
Close the "Properties" dialog window.
4. Click the "Sounds" tab in the "Sound" dialog window, then select "No sounds" in the "Sound Scheme."

Windows XP:

1. From the [START] menu click [Control Panel], then double-click the "Sounds and Audio Devices" icon to open the "Sounds and Audio Devices Properties" dialog window.
2. Click the "Volume" tab.
3. Set "Device volume" to "High."
4. Click the "Sound" tab.
5. Select "No sound" in the "Sound scheme."

Mac:

1. Select [System Preferences ...] from the Apple menu and then select "Sound" to open the "Sound" dialog window.
2. Click the "Output" tab and set the volume slider at the bottom of the window to its maximum level.
3. Click the "Sound Effect" tab and set the volume slider of the "Alert volume" slider to its minimum level.

- Have you connected or disconnected the USB cable while Cubase AI is running?
Doing so can sometimes cause the Windows output level to be reset to its default level. Check and raise the output level if necessary.

The sound is intermittent or distorted.

- Is the PEAK indicator flashing red?
You might have to lower GAIN or LEVEL control levels to avoid distortion.
- Are you applying the compressor at an appropriate level?
You might have to lower COMP control levels.
- Are any other applications, device drivers, or USB devices (scanners, printers, etc.) running at the same time?
Be sure to quit all applications you are not using.
- Are you playing back a large number of audio tracks?
The number of tracks you can play at the same time will depend on the performance of the computer you are using. You may experience intermittent playback if you exceed your computer's capabilities.
- Are you recording or playing long continuous sections of audio?
The audio data processing capabilities of your computer will depend on a number of factors including CPU speed and access to external devices.

On Windows XP computers, changing some settings as outlined below can improve performance.

1. Click [Control Panel] from the [START] menu, and double-click the "Sounds and Audio Devices" icon to open the "Sounds and Audio Devices Properties" dialog window.
2. Click the "Volume" tab and click "Advanced" in "Speaker settings." The "Advanced Audio Properties" dialog window will open.
3. Click the "Performance" tab. Set "Hardware acceleration" to "Full", and "Sample rate conversion quality" to "Good."

Don't change these settings if you are not familiar with your computer's operating system.

Check that the file system is set properly, and make sure that you have a plenty of free memory (more than 128 megabytes). If the audio files you are recording or playing are not too large, changing the virtual memory settings can sometimes improve audio performance.

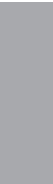
In some cases it might be necessary to update your hard disk controller, device drivers, or BIOS. Refer to your computer's support center or support page on the web for more information.

- Try adding memory.
Adding more RAM memory can significantly increase your computer's audio performance. Refer to your computer's owner's manual for information on installing and setting up extra memory.

There is a delay when playing a software synthesizer via a MIDI keyboard (latency).

- Check the URL listed below for the latest information.
<http://www.yamaha.com/>

MEMO

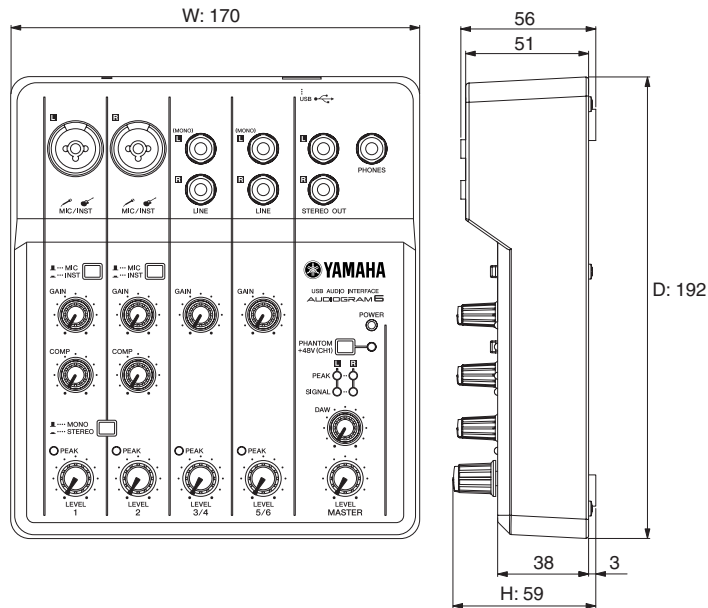


Specifications

■ General Specifications

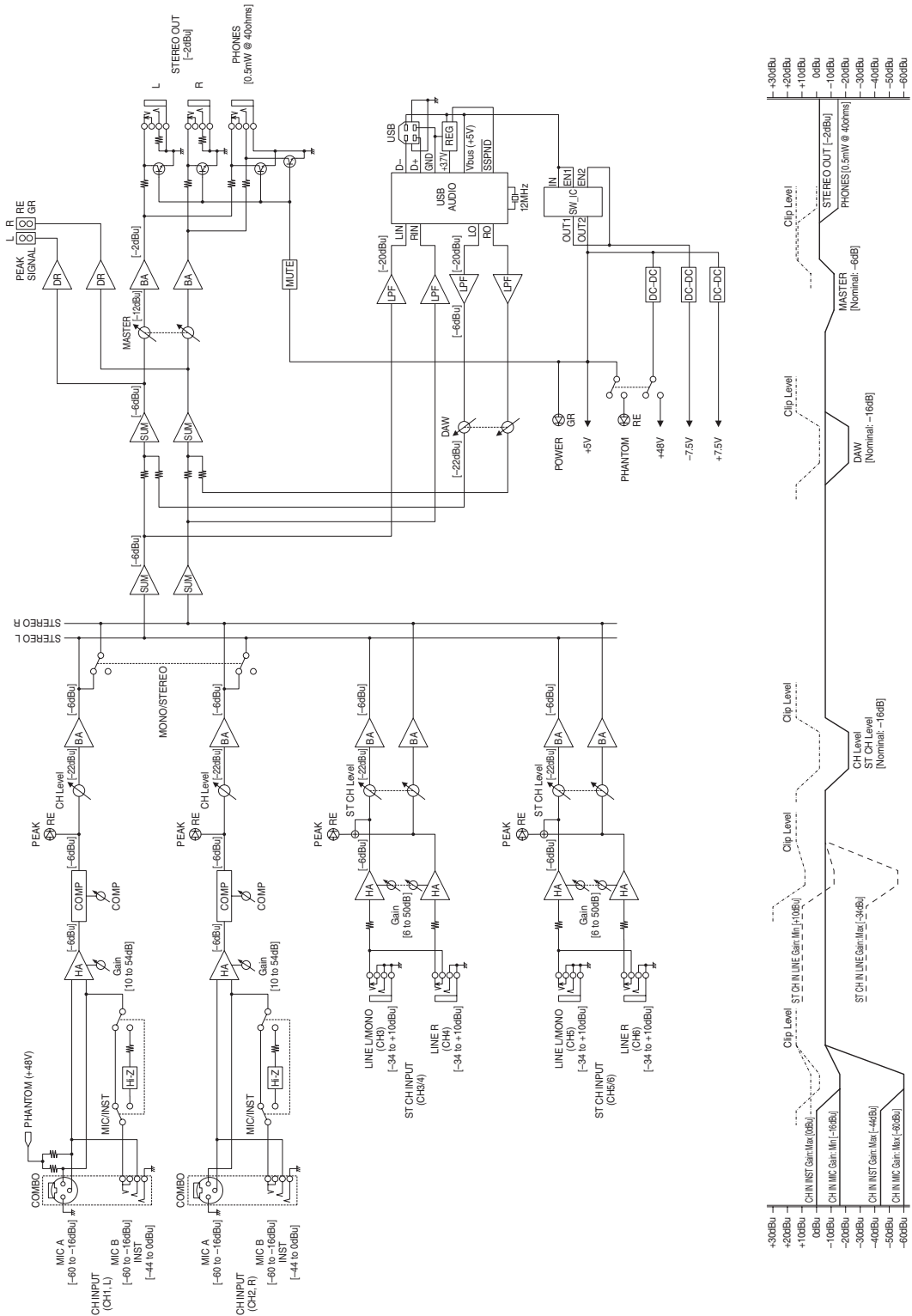
Jacks	MIC/INST Input Jack	x 2	Combo jacks (Mic/HiZ)
	LINE Input Jacks (L, R)	x 2	Phone jacks
	PHONES Jack	x 1	Phone jack
	STEREO OUT Jacks (L, R)	x 1	Phone jacks
	USB Connector	x 1	USB 1.1 44.1/48 kHz, 16 bit
Controls	MIC/INST Switch	x 2	MIC: for microphones INST (Hi-Z): for guitars, etc.
	GAIN Control	x 4	Gain for CH 1-5/6
	COMP Control	x 2	Compressor for CH 1, 2
	MONO/STEREO Switch	x 1	MONO: CH 1, 2 signals function as independent mono channels. STEREO: CH 1, 2 signals function as a stereo pair.
	LEVEL Control	x 4	Adjust the level of CH 1-5/6
	PHANTOM +48V Switch	x 1	48 V, only for CH1
	DAW Control	x 1	Adjusts the DAW playback signal
Indicators	Level Indicators	x 1	2 points (green, red)
	PEAK Indicator	x 4	Red
	Phantom Power	x 1	Red
	Power	x 1	Green
Power Supply	USB bus-powered		
Dimensions (W x H x D)	170 x 59 x 192 mm		
Net Weight	760 g		
Included Accessories	Cubase AI Download Instructions USB cable Owner's Manual		

■ Dimensional Diagrams



Unit: mm

Block Diagram and Level Diagram



For details of products, please contact your nearest Yamaha representative or the authorized distributor listed below.

Pour plus de détails sur les produits, veuillez-vous adresser à Yamaha ou au distributeur le plus proche de vous figurant dans la liste suivante.

Die Einzelheiten zu Produkten sind bei Ihrer unten aufgeführten Niederlassung und bei Yamaha Vertragshändlern in den jeweiligen Bestimmungsländern erhältlich.

Para detalles sobre productos, contacte su tienda Yamaha más cercana o el distribuidor autorizado que se lista debajo.

NORTH AMERICA

CANADA

Yamaha Canada Music Ltd.
135 Milner Avenue, Toronto, Ontario,
M1S 3R1, Canada
Tel: 416-298-1311

U.S.A.

Yamaha Corporation of America
6600 Orangethorpe Avenue, Buena Park, CA 90620,
U.S.A.
Tel: 714-522-9011

CENTRAL & SOUTH AMERICA

MEXICO

Yamaha de México, S.A. de C.V.
Av. Insurgentes Sur 1647 Piso 9, Col. San José
Insurgentes, Delegación Benito Juárez, México,
D.F., C.P. 03900
Tel: 55-5804-0600

BRAZIL

Yamaha Musical do Brasil Ltda.
Rua Joaquim Floriano, 913 - 4º andar, Itaim Bibi,
CEP 04534-013 São Paulo, SP, BRAZIL
Tel: 011-3704-1377

ARGENTINA

**Yamaha Music Latin America, S.A.,
Sucursal Argentina**
Olga Cossetlini 1553, Piso 4 Norte,
Madero Este-C1107CEK
Buenos Aires, Argentina
Tel: 011-4119-7000

VENEZUELA

**Yamaha Music Latin America, S.A.,
Sucursal Venezuela**
C.C. Manzanares Plaza P4
Ofic. 0401- Manzanares-Baruta
Caracas Venezuela
Tel: 58-212-943-1877

PANAMA AND OTHER LATIN AMERICAN COUNTRIES/ CARIBBEAN COUNTRIES

Yamaha Music Latin America, S.A.
Torre Banco General, Piso No.7, Marbella,
Calle 47 y Aquilino de la Guardia,
Ciudad de Panamá, República de Panamá
Tel: +507-269-5311

EUROPE

THE UNITED KINGDOM/IRELAND

Yamaha Music Europe GmbH (UK)
Sherbourne Drive, Tilbrook, Milton Keynes,
MK7 8BL, U.K.
Tel: 01908-366700

GERMANY

Yamaha Music Europe GmbH
Siemensstraße 22-34, 25462 Rellingen, Germany
Tel: 04101-3030

SWITZERLAND/LIECHTENSTEIN

**Yamaha Music Europe GmbH
Branch Switzerland in Zürich**
Seefeldstrasse 94, 8008 Zürich, Switzerland
Tel: 044-387-8080

AUSTRIA/BULGARIA

Yamaha Music Europe GmbH Branch Austria
Schleiergasse 20, A-1100 Wien, Austria
Tel: 01-60203900

CZECH REPUBLIC/HUNGARY/ ROMANIA/SLOVAKIA/SLOVENIA

**Yamaha Music Europe GmbH
Branch Austria (Central Eastern Europe Office)**
Schleiergasse 20, A-1100 Wien, Austria
Tel: 01-60203900

POLAND/LITHUANIA/LATVIA/ESTONIA

**Yamaha Music Europe GmbH
Branch Poland Office**
ul. Wrotkowa 14 02-553 Warsaw, Poland
Tel: 022-500-2925

MALTA

Olimpus Music Ltd.
The Emporium, Level 3, St. Louis Street Msida
MSD06
Tel: 02133-2144

NETHERLANDS/BELGIUM/ LUXEMBOURG

Yamaha Music Europe Branch Benelux
Clarissenhof 5-b, 4133 AB Vianen, Netherlands
Tel: 0347-358 040

FRANCE

Yamaha Music Europe
7 rue Ambroise Croizat, Zone d'activités Pariest,
77183 Croissy-Beaubourg, France
Tel: 01-64-61-4000

ITALY

Yamaha Music Europe GmbH, Branch Italy
Viale Italia 88, 20020 Lainate (Milano), Italy
Tel: 02-935-771

SPAIN/PORTUGAL

**Yamaha Music Europe GmbH Ibérica, Sucursal
en España**
Ctra. de la Coruna km. 17,200, 28231
Las Rozas (Madrid), Spain
Tel: +34-91-639-88-88

GREECE

Philippos Nakas S.A. The Music House
147 Skiathou Street, 112-55 Athens, Greece
Tel: 01-228 2160

SWEDEN/FINLAND/ICELAND

**Yamaha Music Europe GmbH Germany filial
Scandinavia**
J. A. Wettergrensgata 1, Box 30053
S-400 43 Göteborg, Sweden
Tel: +46 31 89 34 00

DENMARK

**Yamaha Music Europe GmbH, Tyskland – filial
Denmark**
Generatorvej 6A, DK-2730 Herlev, Denmark
Tel: 44 92 49 00

NORWAY

**Yamaha Music Europe GmbH Germany -
Norwegian Branch**
Grini Næringspark 1, N-1361 Østerås, Norway
Tel: 67 16 78 00

RUSSIA

Yamaha Music (Russia) LLC.
Room 37, bld. 7, Kievskaya street, Moscow,
121059, Russia
Tel: 495 626 5005

OTHER EUROPEAN COUNTRIES

Yamaha Music Europe GmbH
Siemensstraße 22-34, 25462 Rellingen, Germany
Tel: +49-4101-3030

AFRICA

Yamaha Music Gulf FZE
Office JAFZA 16-512, P.O.Box 17328,
Jebel Ali - Dubai, UAE
Tel: +971-4-881-5868

MIDDLE EAST

TURKEY

**Yamaha Music Europe GmbH
Merkezi Almanya Türkiye İstanbul Şubesi**
Maslak Meydan Sokak No:5 Spring Giz Plaza
Bağimsız Bol. No:3, 34398 Şişli İstanbul
Tel: +90-212-999-8010

CYPRUS

Yamaha Music Europe GmbH
Siemensstraße 22-34, 25462 Rellingen, Germany
Tel: 04101-3030

OTHER COUNTRIES

Yamaha Music Gulf FZE
Office JAFZA 16-512, P.O.Box 17328,
Jebel Ali - Dubai, U.A.E
Tel: +971-4-881-5868

ASIA

THE PEOPLE'S REPUBLIC OF CHINA

Yamaha Music & Electronics (China) Co.,Ltd.
2F, Yunhedasha, 1818 Xinzha-lu, Jingan-qu,
Shanghai, China
Tel: 021-6247-2211

INDIA

Yamaha Music India Pvt. Ltd.
Spazedge building, Ground Floor, Tower A, Sector
47, Gurgaon- Sohna Road, Gurgaon, Haryana, India
Tel: 0124-485-3300

INDONESIA

PT. Yamaha Musik Indonesia (Distributor)
Yamaha Music Center Bldg. Jalan Jend. Gatot
Subroto Kav. 4, Jakarta 12930, Indonesia
Tel: 021-520-2577

KOREA

Yamaha Music Korea Ltd.
8F, 9F, Dongsung Bldg. 158-9 Samsung-Dong,
Kangnam-Gu, Seoul, Korea
Tel: 02-3467-3300

MALAYSIA

Yamaha Music (Malaysia) Sdn., Bhd.
No.8, Jalan Perbandaran, Kelana Jaya, 47301
Petaling Jaya, Selangor, Malaysia
Tel: 03-78030900

SINGAPORE

Yamaha Music (Asia) Private Limited
Block 202 Hougang Street 21, #02-00,
Singapore 530202, Singapore
Tel: 65-6747-4374

TAIWAN

Yamaha Music & Electronics Taiwan Co.,Ltd.
3F, No.6, Section 2 Nan-Jing East Road, Taipei,
Taiwan R.O.C.
Tel: 02-2511-8688

THAILAND

Siam Music Yamaha Co., Ltd.
3, 4, 15 and 16th floor, Siam Motors Building,
891/1 Rama 1 Road, Wangmai,
Pathumwan, Bangkok 10330, Thailand
Tel: 02-215-2622

VIETNAM

Yamaha Music Vietnam Company Limited
15th Floor, Nam A Bank Tower, 201-203 Cach
Mang Thang Tam St., Ward 4, Dist.3,
Ho Chi Minh City, Vietnam
Tel: +84-8-3818-1122

OTHER ASIAN COUNTRIES

**Yamaha Corporation
Sales & Marketing Division**
Nakazawa-cho 10-1, Naka-ku, Hamamatsu,
Japan 430-8650
Tel: +81-53-460-2312

OCEANIA

AUSTRALIA

Yamaha Music Australia Pty. Ltd.
Level 1, 99 Queensbridge Street, Southbank,
Victoria 3006, Australia
Tel: 3-9693-5111

COUNTRIES AND TRUST TERRITORIES IN PACIFIC OCEAN

**Yamaha Corporation
Sales & Marketing Division**
Nakazawa-cho 10-1, Naka-ku, Hamamatsu,
Japan 430-8650
Tel: +81-53-460-2312