



User Guide

Mity-Lite Plus SW320 /SW321 / SW322 Battery Powered PA System with Bluetooth™



PLEASE FULLY CHARGE BATTERY BEFORE USING

Thank you for choosing the **Mity-Lite Plus SW320 / SW321 / SW322 PA System** with  **Bluetooth™** from *AmpliVox Portable Sound Systems*.

We are excited in introducing this truly unique system. Our system combines flexibility with functionality. Please refer to this user guide as you enjoy the unique capabilities of another quality product from *AmpliVox Portable Sound Systems*.

We encourage you to visit our website **www.ampli.com** to register your product for its warranty coverage, sign up to receive our newsletter, download our catalog, and learn more about the complete line of *AmpliVox* audio visual products,

The Bluetooth® word mark and logos are registered trademarks owned by Bluetooth SIG, Inc. and any use of such marks by AmpliVox Portable Sound Systems is under license.

TABLE OF CONTENTS

SAFETY INSTRUCTIONS	2
WHAT'S IN THE BOX	3
SPECIFICATIONS	3
CONTROLS / SIDE PANEL	4
MASTER CONTROLS	4
WIRELESS RECEIVER	5
BLUETOOTH	5
WIRELESS HANDHELD MICROPHONE	6
PENDANT / BODYPACK MICROPHONE	7
MICROPHONE STORAGE	8
BATTERY COMPARTMENT	8
OPTIONAL ACCESSORIES	8
TROUBLESHOOTING / SERVICING.....	9
WARRANTY.....	10

IMPORTANT SAFETY INSTRUCTIONS

Before using this product, read the instruction manual for important safety information. Please retain this manual for future reference and warranty information.

Cleaning

When cleaning the device, please use a soft, dry cloth. Never use benzene, paint-thinner, or other chemicals on the device.

Location

Place the device in stable location, so it will not fall causing damage to the device or bodily harm.

Intended use

The product may only be used with the original parts intended for it. The intended use includes adherence to the specified installation instructions. The manufacturer accepts no liability for damage arising due to improper use.

WARNING: Changes or modifications to this unit not expressly approved by the party responsible for compliance could void the user's authority to operate the equipment.

IMPORTANT

This device complies with Part 15 of the FCC Rules. Operation is subject to the following two conditions: (1) This device may not cause harmful interference, and (2) this device must accept any interference received, including interference that may cause undesired operation. The unit's circuitry may cause interference to nearby radios. To prevent interference, either switch the unit off or move away from the affected radio.

NOTE: This equipment complies within the limits for a class B digital device, pursuant to Part 15 of the FCC Rules. These limits are designed to provide reasonable protection against harmful interference in a residential installation. This equipment generates, uses and can radiate radio frequency energy and, if not installed and used in accordance with the instructions, may cause harmful interference to radio communications. However, there is no guarantee that interference will not occur in a particular installation. If this equipment does cause harmful interference to radio or television reception, which can be determined by turning the equipment off and on, the user is encouraged to try to correct the interference by one or more of the following measures:

- Increase the separation between the equipment and receiver.
- Connect the equipment into an outlet on a circuit different from that to which the receiver is connected.

NOTE: Shielded cables may be required to be used with this unit to ensure compliance with the Class B FCC limits.



SW320

- **Mity-Lite Plus PA**
- **Wireless Handheld Microphone**
- **Universal Power Supply with North America IEC Power Cord**
- **Microphone Charging Cable**
- **Shoulder Strap**
- **Two Rechargeable Microphone Batteries**



SW321 / SW322

SW321

- **Above items plus Pendant / Bodypack Microphone (S1678)**

SW322

- **All above items plus Microphone Headset (S2045)**



SW322

SW320 SPECIFICATIONS

Rated Power Output:	40 W RMS	Bluetooth™ Range:	Up to 30 Feet
Speaker:	5" Full Range Neodymium	AC Power:	100-240 V Auto sensing, 50/60 Hz
Frequency Response:	70Hz to 17Khz	Microphone Input:	1/4" (6.3mm)
Sensitivity:	105 dB SPL @ 1 W / 1 M	Weight:	8 lbs. (with battery) 3.6 kgs
PA Battery:	One 12 volt rechargeable Sealed Lead Acid Battery (SLA), 2.9 AH, User accessible and replaceable	Dimensions :	13 1/8" L x 9 3/4" H x 6 1/8" W
Microphone Battery:	Two "AA" 1.2V Nickel Metal Hydride (Ni-MH) 2500mAh rechargeable	Warranty :	1 year Limited Warranty; Wireless Handheld Microphone, Wireless Receiver, Bluetooth Module, Rechargeable Battery (90 days)
Digital Wireless PA Frequency:	2.4 GHz / frequency hopping 16 preset channels, 32 operable frequencies		
Wireless Range:	Up to 98 Feet (30 meters)		

CONTROLS / SIDE PANEL



Your Bluetooth and Wireless Receiver may be located in a different position then shown above

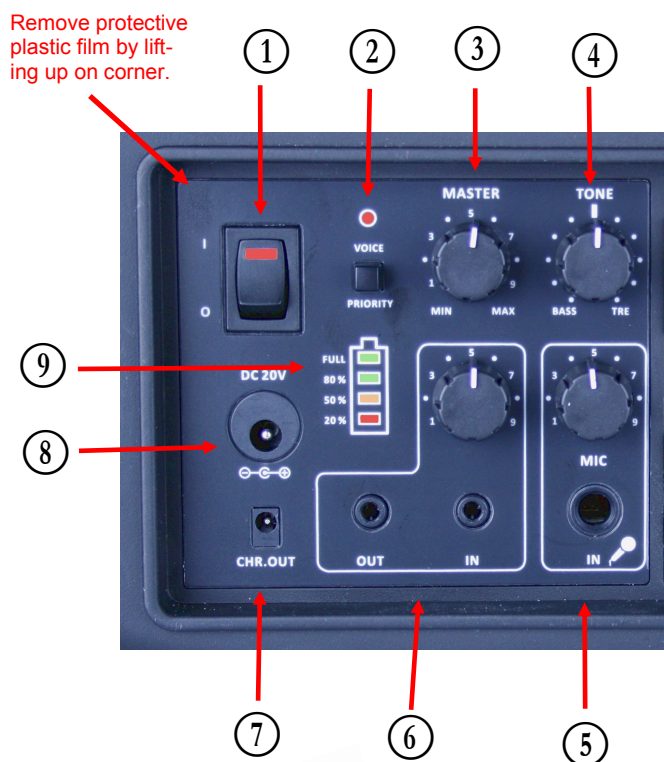
MASTER CONTROLS

- **POWER SWITCH** ①: Press to turn ON. Battery Level Meter ⑨ will light. Wireless Receiver(s) will turn on.
- **VOICE PRIORITY** ②: Press to turn "ON" this feature. Allows a voice message to take precedence over the musical program, without turning the music off completely. Full volume is returned when speaking is complete.
- **MASTER VOLUME** ③: Rotate knob clockwise to increase volume of PA to desired level.
- **TONE CONTROL** ④: Rotate knob clockwise to increase TREBLE to desired level.
- **WIRED MICROPHONE** ⑤: 1/4" input jack. Use separate volume control knob to adjust level of microphone.
- **AUX IN / OUT** ⑥: 3.5mm input jacks for other audio devices. Separate volume control to adjust level of input source.
- **CHARGER OUTPUT (5V)** ⑦: Use for charging optional S1678 Lavalier / Body Pack microphone transmitter.
- **BATTERY CHARGER** ⑧: To charge the battery, connect the PA to 110-220VAC using the supplied power cord and AC Adapter. The battery will charge when unit is operating with AC power, **HOWEVER, the unit will charge faster with the power switch in the "off" position.**

Charging time is about 7 hours.

- **BATTERY LEVEL METER** ⑨: Shows percent of battery power left. Both FULL and 80% are green LED's, 50% is yellow and 20% is red. When 20% level is reached the red LED will flash as a reminder to charge battery. When charging, LED's will flash. When complete, the **FULL** green LED will stay on.

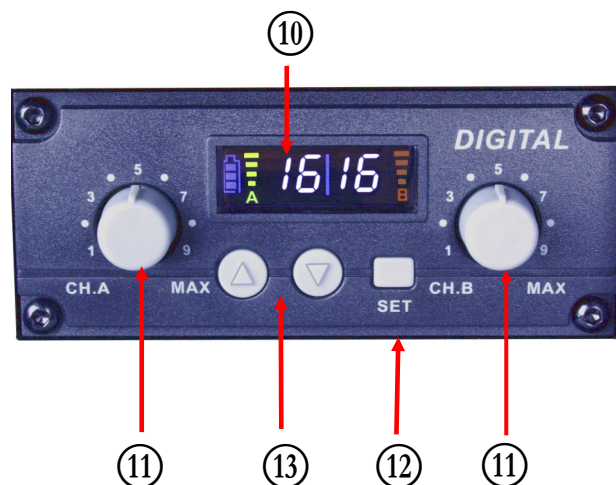
A full charge should give you up to 10 hours of operating time (less if using for music).



OPTIONAL S1678 Microphone

16 CHANNEL DIGITAL WIRELESS RECEIVER

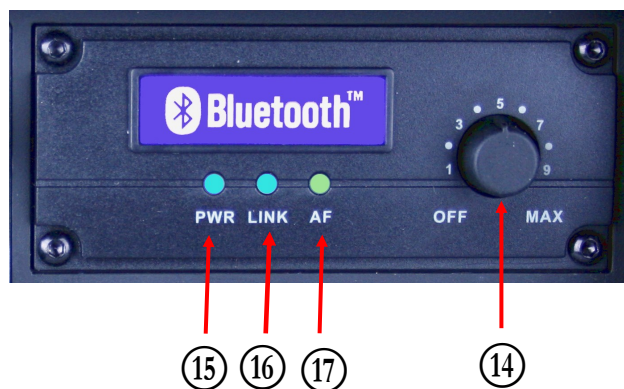
- The **Dual Wireless Microphone Receiver** powers ON / OFF when the **Main Power Switch** ① is pressed ON / OFF.
- The **AmpliVox SW320** has two built-in receivers CH.A / CH.B ⑪ with separate volume controls. Each volume control is used to set output level of the wireless microphone. Set wireless microphone and master volume level at desired setting.
- CHANNEL SELECT:** Hold the **SET** ⑫ button to enter the channel select mode. Once the channel number starts to flash, press either the up / down button to select a channel (1-16). Press **SET** ⑫ button again to lock. Selection also will auto lock without pressing button after 10 seconds.
- CHANNEL DISPLAY** ⑩: Shows Channel Number / Signal Strength; Receiver A / B and battery level of microphone ("A" receiver only).

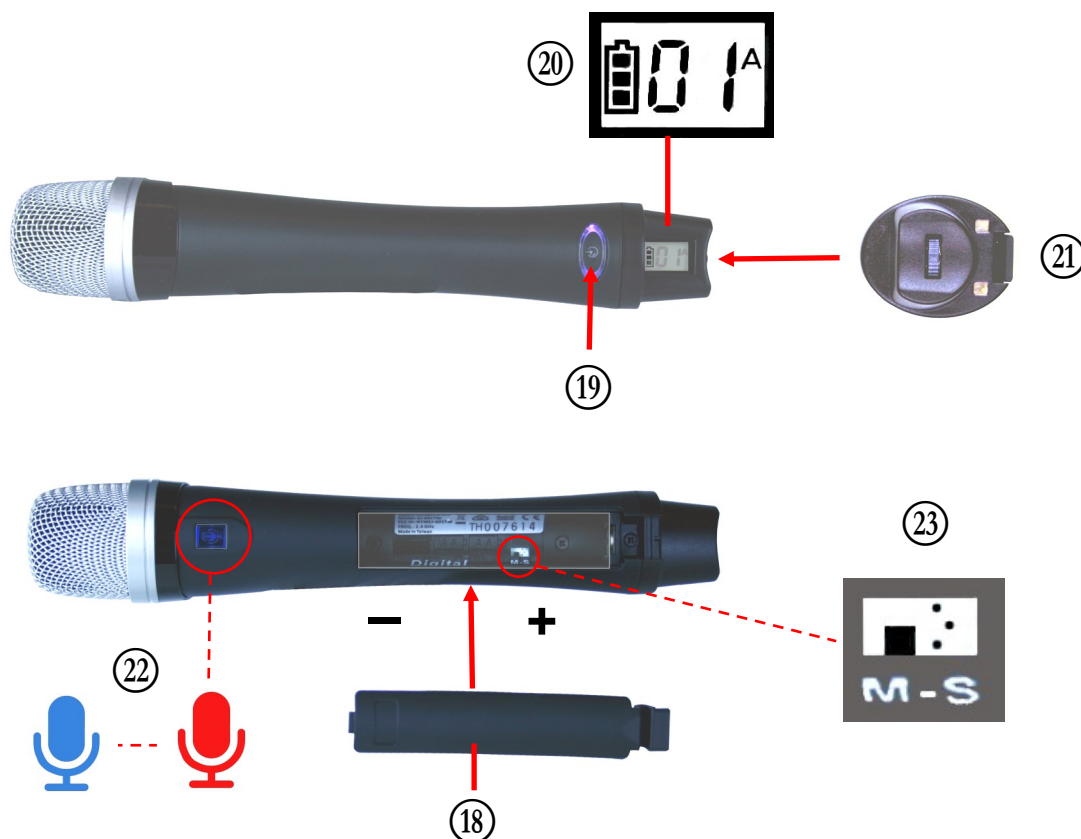


NOTE: CHANNEL NUMBER SELECTED ON PA MUST ALSO MATCH CHANNEL NUMBER ON WIRELESS HANDHELD MICROPHONE.




- With main power switch ① on, rotate ON / OFF / Volume Control ⑭ clockwise to turn Bluetooth module on. A prompt tone will be heard and the power indicator ⑮ will light blue. The **LINK** ⑯ indicator will start to flash, searching for a Bluetooth signal.
- Turn on your Bluetooth device for pairing. On your Bluetooth menu of your device, choose **Portable PA**. Once paired, blue LINK indicator will stay on and you will hear an audible tone beep twice. The Search function will stay active for 10 minutes. If no signal is found, this function will shut off.
- You are now ready to stream audio from your device. You can adjust the volume using the volume control on the Bluetooth module ⑭, the master volume control ③ and your Bluetooth device's volume control. For maximum loudness set your Bluetooth device at maximum loudness and then adjust using the other two volume controls on the PA.
- AF INDICATOR** ⑰ will light green when audio signal is received from the Bluetooth device.
- If you are using a smartphone and you receive a phone call, the audio will stop. When the phone call has been completed the Bluetooth will automatically be linked again to the PA.





FEATURES

- **BATTERIES / BATTERY DOOR (18):** Remove door and insert 2 “AA” 1.2V Nickel Metal Hydride (Ni-MH) 2500mAh rechargeable batteries. **DO NOT USE ALKALINE BATTERIES.** Because of the charging / storage compartment, see item (24). Make sure that both of the batteries are inserted in the correct direction. Replace door.
A fully charged set of batteries should last up to 10 hours. To be safe, when you see the battery level has reached the last “BAR” in the battery symbol (LCD window (20)) replace with a new set of charged batteries or recharge immediately. If microphone is not used for a period of 30 minutes, microphone will automatically shut off.
CAUTION! Do not attempt to charge Alkaline Batteries. It will lead to battery leakage or even explosion.
- **POWER BUTTON (19):** Press and hold until you see “ON” appear in the LCD window (20). Button will light to show that it is “ON”. To turn “OFF” press and hold until you see “OF” in the LCD window. Button light will turn “OFF”.
Microphone will automatically sync with the receiver when turned on. If you wish to change channel, first change to new channel on receiver and then press the power button once to activate the auto sync function.
- **LCD WINDOW (20):** Shows battery level, **HIGH** - Three Bars / **MEDIUM** - Two Bars / **LOW** - One Bar; Frequency Channel (1-16) and which receiver, “A” or “B” that microphone is transmitting to.
- **VOLUME CONTROL ADJUSTMENT (21):** Located on the bottom of microphone, this feature allows you to change volume level, up / down of microphone during usage. Push once, then move switch either up or down to change volume level. There are only three levels. Level is shown in LCD window when switch is moved.
- **MUTE (22) :**  Located on the back / battery side of microphone near the top. When microphone is turned on both the power button and **MUTE** button will light **BLUE**. To **MUTE**, press once, turns **RED**. Press again to **UNMUTE** microphone.
- **DEDICATED MICROPHONE (23):** When you have two wireless microphones, each one will auto sync to receiver “A” or “B”. Inside the battery compartment there is a switch, “M” / “S”. Choosing “M” will dedicate that microphone for only the “A” receiver. Choose “S” for receiver “B”. By leaving the switch in the “M” position the microphone will always auto sync to the open receiver. **It is recommended that you always leave the switch in the “M” position.** Wireless microphone is shipped in the “M” position.



FEATURES

- **BATTERY:** Microphone has a built-in rechargeable battery, the same as you have in your cell phone. A fully charged battery should last up to 10 hours. Always keep your microphone fully charged. To be safe, when you see the battery level has reached the last "BAR" of the battery symbol, recharge immediately.
- **POWER / MUTE BUTTON** (24): Press and hold until you see "ON" appear in the LCD window (20). Button will light BLUE to show that it is "ON". Microphone will automatically sync with the receiver. If you wish to change channel, first change to new channel on receiver and then press the power button once to activate the auto sync function.
To turn "OFF" press button (24) and hold until you see "OFF" in the LCD window. Release, button light will turn "OFF".
To **MUTE**, press button (24) and release quickly. Button light will turn to RED. To unmute, press button again and release quickly.
- **VOLUME CONTROL ADJUSTMENT** (25): this feature allows you to change volume level, up / down of microphone during usage. Press **SET**, then press either up (+) or down (-) buttons to change volume level. There are only three levels. Level is shown in LCD window when buttons are pressed. Additional volume adjustment is available on main control panel. When used as a pendant microphone, start at level 3, set receiver level at 5 then adjust main volume. To prevent squealing / feedback make sure that you are standing behind the speaker when talking.
- **LCD WINDOW** (26): Shows battery level, **HIGH** - Three Bars / **MEDIUM** - Two Bars / **LOW** - One Bar; Frequency Channel (1-16) and which receiver, "A" or "B" that microphone is transmitting to.
- **CHARGING INDICATOR** (27): Located under the mesh, LED will turn RED to show that it is charging, turns GREEN when fully charged.
- **AUX IN** (28): Use microphone as a wireless transmitter for playing audio from other devices. You will need a cable that has a 1/8" (3mm) on one end for connecting here and the other end will need to match the audio output connector of your device.
- **NECK STRAP** (29): Adjust strap so that microphone is no more than 4 inches from chin. To open, pull apart connector as show above. Slide strap buckle to adjust length. Push ends (click) together to close.
- **BODY PACK BELT CLIP** (30): To remove, slide finger nail into crack (A) and lift up to release.
- **CHARGING CONNECTOR** (31): Locate 9 inch long cable that was in the accessory box of PA. Connect here and on Main Control Panel (see page 4) item ⑦.
- **HEADSET** (32): When used as a Body Pack Transmitter, connect optional headset S2045 here .



MICROPHONE STORAGE / CHARGING (33): At the back end of the handle a convenient storage / charging compartment has been provided for the Handheld Microphone.

Press and pull tab to open. Microphone can only be inserted in one direction. Please observe the label that is on the door.

When microphone batteries need to be charged, insert microphone into compartment, and plug-in the power supply.

Microphone batteries can also be charged using the AmpliVox accessory Model S1677 Microphone Charger, sold separately.

BATTERY COMPARTMENT

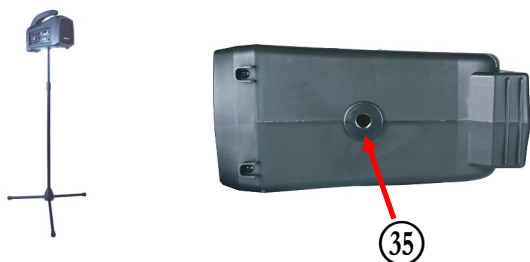


BATTERY (34): Access is located on side of PA. Remove screw on cover and slide toward back.

IMPORTANT BATTERY INFORMATION !

- This battery is like a car battery, it needs to be charged at least every 6 months. If not charged, the battery will die and will need to be replaced..*
- You can expect to get 2 - 3 years use before needing replacement if kept charged.*

STAND MOUNTING



STAND MOUNTING (35): Located on the bottom side of the PA is a mounting hole threaded for a 5/8" microphone stand.

- First time usage of stand may require you to lay the PA on its side to screw in the stand. To make it easier, you can use a lubricant like WD-40 on the screw threads.*

OPTIONAL ACCESSORIES



(A)	S1676	Handheld Wireless Microphone	MSRP \$250.00
(B)	S1678	Pendant / Bodypack Wireless Microphone	MSRP \$220.00
(C)	S2045	Headset (for S1678 Bodypack).....	MSRP \$226.00
(D)	S1677	Microphone Charger (microphones not included).....	MSRP \$150.00
(E)	S1946	Carry Case	MSRP \$55.00
(F)	S1073	PA / Microphone Stand	MSRP \$88.00
(G)	S1493	Battery (12V 2.9Ah)	MSRP \$79.00

Pricing Subject To Change

Troubleshooting & Servicing

Do not attempt to service or repair the device yourself. Refer all servicing to qualified service personnel. Do not attempt to modify the device in anyway. Doing so could invalidate your warranty.

PROBLEM & ITEMS TO CHECK

UNIT WILL NOT TURN ON

- Is unit plugged in?
- Are batteries charged?

UNIT OPERATES ON AC BUT NOT BATTERY

- Charge battery
- Replace battery

SOUND IS MUFFLED

- Tone too low

FEEDBACK: A LOUD SQUEALING, SHRILL OR HOWLING SOUND THAT IS SELF GENERATED

- Feedback occurs when a microphone is too close to the speaker or the microphone volume is too high, or the microphone is pointed towards the speaker. It is also caused by sound reflecting off hard surfaces.
- Reduce or eliminate Feedback by
 - Pointing the microphone in a different direction
 - Keeping the microphone BEHIND the speakers
 - Turn down the volume levels

POWER IS ON, BUT NO SOUND

- Check main volume level.
- If using wireless, be sure receiver and transmitter battery is installed and both units are turned on.

MICROPHONE SIGNAL IS WEAK

- If microphone has batteries, check batteries.
- Check cables/connectors.

WIRELESS MIC DOES NOT WORK

- Check that transmitter batteries are fully charged and ensure transmitter is on.
- Does green "signal" LED light when transmitter is turned on?
- Are the transmitter and receiver on the same channel? (1-16)

WIRELESS MIC CUTS IN AND OUT

- Is unit visible (line of sight) from user? If not, move unit into view when using wireless microphone.
- Does the green "signal" LED go out when signal drops out? Check batteries in Handheld Microphone transmitter.

BATTERY WILL NOT HOLD CHARGE

- Replace Main Batteries every 1-2 years if unit is not left charging when not in use.
- A full charge is best obtained when the unit is off and plugged into the AC outlet for several hours. After a year or two the battery may need to be replaced. Batteries are available from AmpliVox.

NEED HELP? Call 800-267-5486

DISCLAIMER

AmpliVox Portable Sound Systems, operates a policy of continuous development. AmpliVox reserves the right to make changes and improvements to any of the products described in this document without prior notice.

Under no circumstances shall AmpliVox be responsible for any loss of data or income or any special, incidental, consequential or indirect damages howsoever caused.

In some countries there may be some restrictions in using this equipment. Please check with your local radio frequency authorities.

WARRANTY

Limited One (1) -Year Warranty

AmpliVox warrants this product to be free from defects in materials and workmanship (subject to the terms set forth below) for a period of one(1) year from the date of purchase ("Warranty Period"). All accessories and the batteries are warrantee for 1 year. Accessories are; wireless and wired microphones, receivers and transmitters, CD players, cassette players, and digital players.

During the Warranty Period, AmpliVox will repair or replace (at AmpliVox's discretion) this product or any defective parts ("Warranty Service").

Repair or replacement under the terms of this warranty does not give right to any extension or a new beginning of the period of warranty.

CLAIMS UNDER THE WARRANTY

To obtain Warranty Service, **contact AmpliVox (800-267-5486)** to be assigned a **Return Authorization number (RA#)**. After receiving a RA#, the defective unit is to be returned to AmpliVox in either its original packaging or packaging affording an equal degree of protection. You will bear the cost of shipping the product to AmpliVox. If the product is covered by the warranty, AmpliVox will bear the cost of shipping product back to you after the completion of service under this warranty.

Return shipping will be charged to you for products not covered by the warranty or requiring no warranty repair.

The following information must be presented to obtain Warranty Service: **(a)** the RA# must be clearly and legibility marked on the outside of shipping carton, **(b)** proof of purchase, which clearly indicates the name and address of the seller, the date of purchase and the product type, which is evidence that this product is within the Warranty Period. Please further include **(c)** your return address, **(d)** daytime telephone number, and **(e)** reason for return.

LIMITATION OF WARRANTY

This warranty is only valid for the original purchaser and will automatically terminate prior to expiration if this product is sold or otherwise transferred to another party. The warranty provided by AmpliVox in this statement applies only to products purchased for use, and not for resale. It does not apply to open box purchases, which are sold "as is" and without any warranty. Specifically exempt from warranty are limited-life consumable components subject to normal wear and tear, such as microphone windscreens, ear cushions, modular plugs, ear tips, decorative finishes, batteries, and other accessories. This warranty is invalid if the factory-applied serial number, date code label, or product label has been altered or removed from this product. This Warranty does not cover cosmetic damage or damage due to misuse, abuse, negligence, Acts of Nature, accident, disassembling or modification of, or to any part of, the product. This Warranty does not cover damage due to improper operation, maintenance or installation, or attempted repair by anyone other than AmpliVox. Any unauthorized repairs will void this warranty.

REPAIRS OR REPLACEMENTS AS PROVIDED UNDER THIS WARRANTY ARE THE EXCLUSIVE REMEDY OF THE CONSUMER. AMPLIVOX SHALL NOT BE LIABLE FOR ANY INCIDENTAL OR CONSEQUENTIAL DAMAGES FOR BREACH OF ANY EXPRESS OR IMPLIED WARRANTY ON THIS PRODUCT. EXCEPT TO THE EXTENT PROHIBITED BY LAW, THIS WARRANTY IS EXCLUSIVE AND IN LIEU OF ALL OTHER EXPRESS AND IMPLIED WARRANTIES WHAT SO EVER, INCLUDING BUT NOT LIMITED TO THE WARRANTY OF MERCHANTABILITY AND FITNESS FOR A PRACTICAL PURPOSE.

NOTE! This warranty gives you specific legal rights. You may have other rights which vary from location to location. Some jurisdictions do not allow the exclusion or limitation of incidental or consequential damages or implied warranties, so the above exclusions may not apply to you. This warranty does not affect your legal (statutory) rights under your applicable national or local laws.



Dispose of the product according to local standards and regulations