

Acclaim Portable Lectern Sound System Owners Manual

MADE IN USA



A Message from the President

Congratulations on purchasing an Anchor Audio portable lectern, the choice of thousands of satisfied customers including the White House, prestigious universities, school districts nationwide, police and fire departments, and all branches of the U.S. Military. Our products are made of the finest materials and built with pride in the U.S.

We've incorporated the latest technology into your sound system yet kept it simple to use. Just take a few minutes to review this manual to ensure the maximum enjoyment of your Anchor system. Or, you can view a demonstration video complete with a trouble shooting section at www.anchoraudio.com.

Feel free to call our friendly customer support staff at 1-800-ANCHOR1 with any questions. We love to hear from our customers.

A handwritten signature in black ink, appearing to read "James J. Jones".

on behalf of all Anchor employees

CONTENTS

GETTING STARTED	1
ACCLAIM LECTERN BASIC SYSTEM OPERATION	2
OPERATING THE BUILT-IN UHF WIRELESS RECEIVER	3
OPERATING THE WIRELESS MICROPHONE/TRANSMITTER	4
CARING FOR YOUR BUILT-IN BATTERIES	5
IMPORTANT SAFETY INSTRUCTIONS	6-7
HAVING TROUBLE WITH YOUR SOUND SYSTEM?/ANCHOR WARRANTY	8

GETTING STARTED

Please check your new unit carefully for any damage which may have occurred during shipment. Each Anchor product is carefully inspected at the factory and packed in specially designed boxes for safe transport.

Notify the freight carrier immediately of any damage to the shipping box or product. Repack the unit in the original box and wait for inspection by the carrier's claim agent. Notify your dealer of the pending freight claim.

NOTE: All damage claims must be made with freight carrier!

RETURNING SYSTEMS FOR SERVICE OR REPAIR

For service or repair, please contact the dealer you purchased your system from, call us at 1-800-262-4671, or visit www.AnchorAudio.com, Contact Us page. Our tech support team will issue an RA number for warranted systems, after which, you can ship the item(s) to Anchor for repair. All shipments to Anchor Audio must include an RA number and must be shipped prepaid. C.O.D. shipments and shipments without an RA number will be refused and returned at your expense.

IMPORTANT: Save the shipping box & packing materials, they were specially designed to ship your unit!

Acclaim Portable Lectern Sound System Owners Manual

MADE IN USA



SIX YEAR WARRANTY

BASIC SYSTEM OPERATION

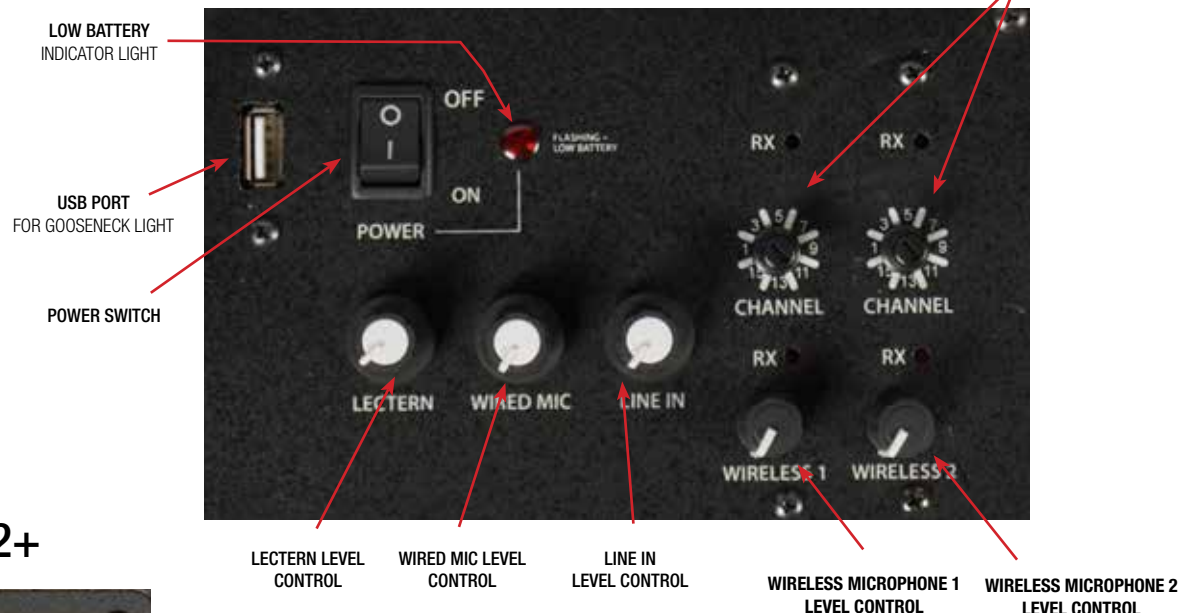
NOTE: Fully Charge Batteries Before First Use!

1. Set all Input Level Controls to minimum & Tones Controls to flat (*the middle setting*) before turning your system on
2. Plug lectern gooseneck microphone into the Lectern Mic Jack located on the tabletop
3. Switch POWER to ON, the BATTERY LED will light
4. Slowly increase the Level Control for the input jacks used to the desired volume
5. Adjust BASS & TREBLE controls to desired sound quality

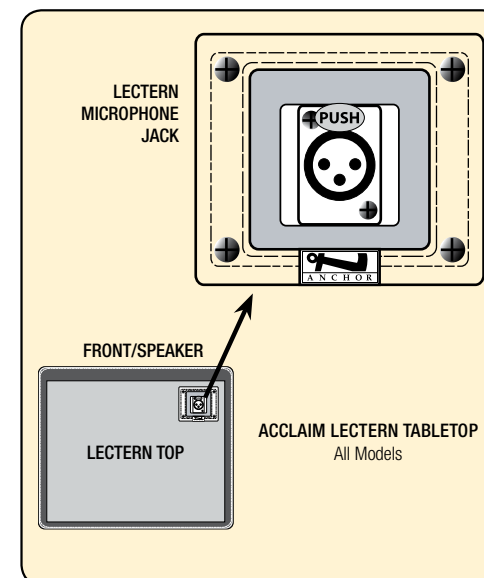
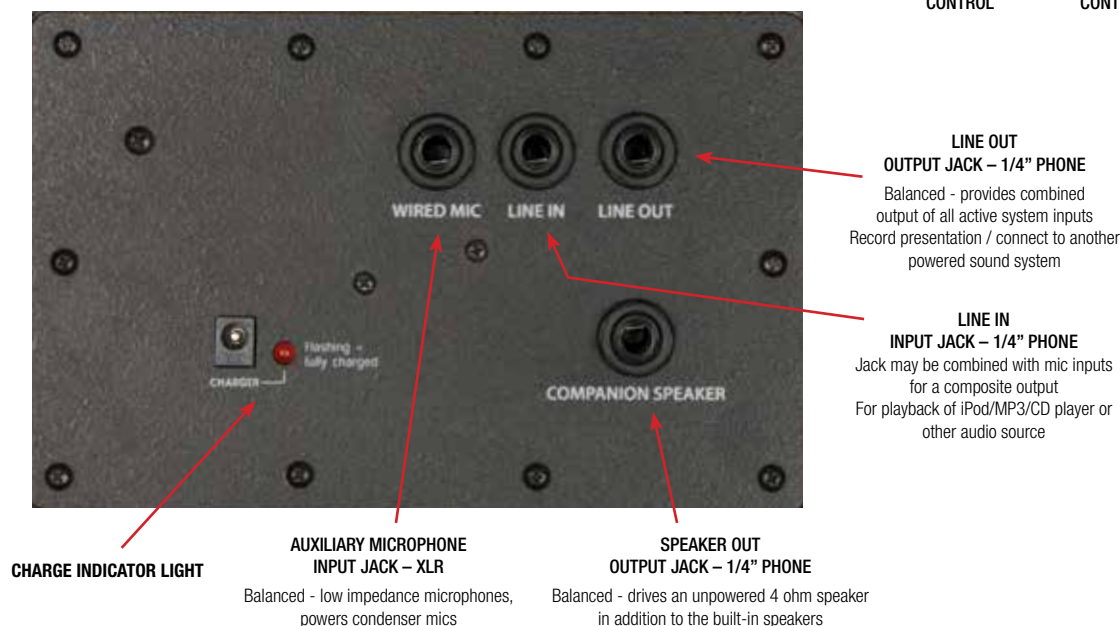
IMPORTANT: Make all connections with shielded cables to avoid hum, buzzing or interference.

TOP PANEL OF ACL-8000U2+

UHF WIRELESS RECEIVER
Available on selected models only



BACK PANEL OF ACL-8000U2+



DIVERSITY WIRELESS BY ANCHOR AUDIO

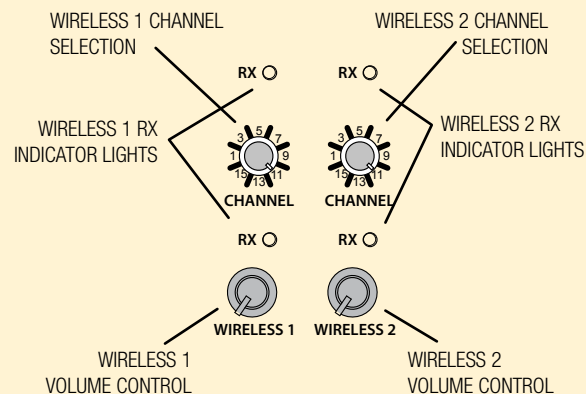
Anchor Audio UHF wireless is a 16 channel, diversity wireless system that receives signals with two independent antennae. With diversity wireless the receiver processes the stronger signal, effectively minimizing dropouts and interference from other transmitting sources. The antennae are mounted internally so there are no obstructions or risk of damage. The 8000 series wireless operates between 540 - 570 MHz.

CHANNEL SELECTION - BUILT-IN RECEIVER

Select a channel, set the built-in receiver & microphone transmitter to that channel before using your wireless system.

1. Choose any available wireless channel from 1 thru 16
(see page 4 for transmitter instructions)
2. Set the Wireless Channel Selection Knob to the channel you choose in step 1

If you have two wireless receivers repeat above for the second receiver. Remember, each receiver/transmitter pair must be set to different channels to avoid interference.



**NOTE: Ongoing wireless interference? The frequency you selected may be in use by other systems in the area!
Change channels until you find a clear frequency!**

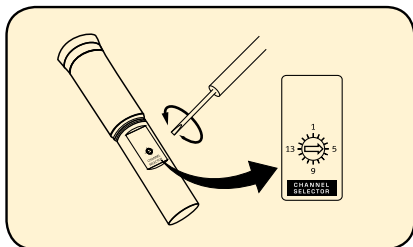


SIX YEAR WARRANTY

OPERATING THE WIRELESS MICROPHONE/TRANSMITTER

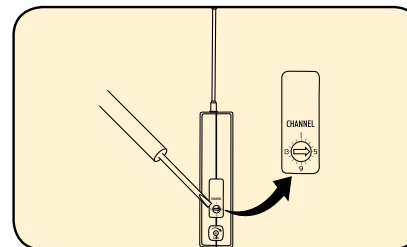
CHANNEL SELECTION - HANDHELD TRANSMITTER

1. Unscrew battery cover on bottom of microphone
2. Set the CHANNEL SELECTOR dial to match the channel setting of your receiver
3. Replace battery cover and tighten firmly



CHANNEL SELECTION - BODY-PACK TRANSMITTER

1. The channel selection dial is located on the side of the transmitter
2. Set the CHANNEL selection dial to match the channel setting of the receiver



NOTE: When using dual wireless, each microphone must be set to a different channel!

USING YOUR WIRELESS MICROPHONES

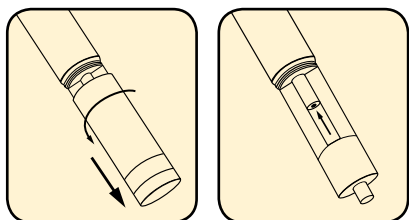
After you have set the transmitter channel (see above) you are ready to use your wireless microphone:

1. Body-pack transmitter users must insert the mic plug into the transmitter jack marked MIC
2. Push the transmitter power button for two seconds until ON (The red LED will stay on when the mic is turned on. If the red LED flashes, the battery is low)
3. Turn the Acclaim power switch to ON
4. The RX indicators will light (*only one indicator will light at a time*) when the wireless signal is being transmitted and received

CAUTION: Harmful feedback may occur when walking in front of a sound system or speaker with a wireless microphone. Always point microphone away from speakers!

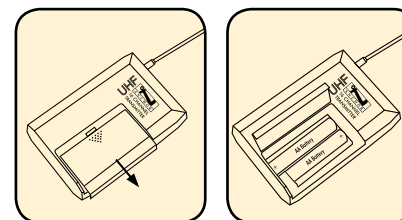
REPLACE BATTERY - HANDHELD TRANSMITTER

1. Unscrew battery cover on bottom of microphone
2. Replace old batteries with two fresh size 'AA' alkaline batteries
3. Replace battery cover and tighten firmly



REPLACE BATTERY - BODY-PACK TRANSMITTER

1. Slide open battery cover on front of transmitter
2. Replace old batteries with two fresh size 'AA' alkaline batteries
3. Replace battery cover by sliding firmly into place



Acclaim Portable Lectern Sound System Owners Manual

MADE IN USA



CARING FOR YOUR BUILT-IN BATTERY

It is very important that you fully charge the battery in your new portable lectern before the first time its used. To preserve battery life it is also recommended that the battery be fully charged as soon as possible after every use regardless of the length of operation.

UNDERSTANDING THE BATTERY LEVEL INDICATOR

LED Flashing Red: Battery charge is very low, in 15-30 minutes the Battery Protection Circuit will turn the system off.

LED Off: Battery is completely drained and must be charged.

NOTE: System can be used while batteries charge!

OPERATING IN AC MODE

Plug your portable lectern into an AC outlet. Operate as normal while charging the built-in battery at the same time. The Charger LED will light during charging and flash when the battery is fully charged.

BATTERY SERVICE TIME

With the battery fully charged you can expect approx.:
8-12 hrs @ Medium Volume 3-6 hrs @ Full Volume
of continuous music input (*longer for speech*). Service time will vary depending on control settings and use of accessories (*built-in wireless receivers and/or a companion speaker*).

IMPORTANT: For longer battery life always store your system with battery fully charged!



CHARGING YOUR BUILT-IN BATTERY

An automatic charging system is built-in to your Acclaim Portable Lectern. It is designed to properly charge and maintain the systems built-in battery. To charge battery:

1. Plug the power cord into your sound system
2. Plug the other end of the cord into AC outlet - Charger LED will stay on during charging
3. Battery will fully charge in approximately 6-8 hrs - Charger LED will flash

When in AC mode the system automatically transfers power from the battery charger to the power amplifier at high volume output, causing the Charger LED to flicker.

SYSTEM STORAGE & BATTERY

Always store your sound system with the battery fully charged. For extended periods of storage leave the system plugged into an AC outlet. If this is not possible, charge the system at least once each month for a minimum of 24 hours.

Waste electrical and electronic products must not be disposed of with household waste. Please recycle where facilities exist. Check with your Local Authority or Retailer for recycling advice.



NOTE: System Can Be Used During Charging!



SIX YEAR WARRANTY



European Union CE Mark European Union CE Mark

The presence of the CE Mark on Anchor equipment means that it has been designed, tested and certified as complying with all applicable European Union (CE) regulations and recommendations.



Figure DC Voltage Symbol

Direct current symbol

This international symbol implies a Direct voltage or current.

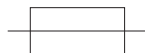


Figure Fuse Symbol

Fuse Symbol

The fuse symbol in the figure above identifies the fuse location on the Anchor System. (Not required if not user replaceable)



Figure On Symbol

On Symbol

The On Symbol in the figure above represents a power switch position on the Anchor System. This symbol represents a Power On condition.



Figure Off Symbol

Off Symbol

The Off Symbol in the figure above represents a power switch position on the Anchor System. This symbol represents a Power Off condition.



Figure WEEE Directive Symbol

Waste Electrical and Electronic Equipment (WEEE)

This symbol on the product or on its packaging indicates that this product must not be disposed of with regular waste. Instead, it is the user responsibility to dispose of waste equipment according to the local laws. The separate collection and recycling of the waste equipment at the time of disposal will help to conserve natural resources and ensure that it is recycled in a manner that protects human health and the environment. For information about where the user can drop off the waste equipment for recycling, please contact your local Anchor representative. See Section for instructions on how to disassemble the equipment for recycling purposes.

Inspection for Damage

The Model Acclaim is carefully packaged at the factory to minimize the possibility of damage during shipping. Inspect the box for external signs of damage or mishandling. Inspect the contents for damage. If there is visible damage to the instrument upon receipt, inform the shipping company and Anchor Inc. immediately.

	Inspection for Damage
	<p>Do not attempt to operate this equipment if there is evidence of shipping damage or you suspect the unit is damaged. Damaged equipment may present additional hazards to you. Contact Anchor technical support for advice before attempting to plug in and operate damaged equipment.</p>

Warning: To reduce the risk of fire or electric shock, do not expose this apparatus to rain or moisture, apparatus shall not be exposed to dripping or splashing and no objects filled with liquids, such as vases, shall be placed on the apparatus.

– minimum distances around the apparatus for sufficient ventilation; the ventilation should not be impeded by covering the ventilation openings with items, such as newspapers, tablecloths, curtains, etc.; no naked flame sources, such as lighted candles, should be placed on the apparatus.

– attention should be drawn to the environmental aspects of battery disposal; the use of apparatus in tropical and/or moderate climates.

-Equipment may be located above or below this apparatus, but some equipment (like large amplifiers) may cause an unacceptable amount of hum or may generate too much heat and degrade the performance of this apparatus.



SIX YEAR WARRANTY

Important Safety Instructions

- 1) Read Instructions – All the safety and operation instructions should be read before the product is operated.
- 2) Retain Instructions – The safety and operating instructions should be retained for future reference.
- 3) Heed Warnings- All warnings on the product and in the operating instructions should be adhered to.
- 4) Follow Instructions – All operating and use instructions should be followed.
- 5) Cleaning – Unplug this product from the wall outlet before cleaning. Do not use liquid cleaners or aerosol cleaners. Use a damp cloth for cleaning.
Exception: A product that is meant for uninterrupted service and that for some specific reason, such as the possibility of the loss of an authorization code for the CATV converter, is not intended to be unplugged by the user for cleaning or any other purpose, may exclude the reference to unplugging the product in the cleaning description otherwise in above 5).
- 6) Attachments – Do not use attachments not recommended by the product manufacturer as they may cause hazards.
- 7) Water and Moisture – Do not use this product near water – for example, near a bath tub, wash bowl, kitchen sink, or laundry tub; in a wet basement; or near a swimming pool; and the like.
- 8) Accessories – Do not place this product on an unstable cart, stand, tripod, bracket, or table. The product may fall, causing serious injury to a child or adult, and serious damage to the product. Use only with a cart, stand, tripod, bracket, or table recommended by the manufacturer, or sold with the product. Any mounting of the product should follow the manufacturer's instructions, and should use a mounting accessory recommended by the manufacturer.
- 9) A product and cart combination should be moved with care. Quick stop, excessive force, and uneven surfaces may cause the product and cart combination to overturn.
- 10) Ventilation – Slots and openings in the cabinet are provided for ventilation and to ensure reliable operation of the product and to protect it from overheating, and these openings must not be blocked or covered. The openings should never be blocked by placing the product on a bed, sofa, rug, or other similar surface. This product should not be placed in a built-in installation such as a bookcase or rack unless proper ventilation is provided or the manufacturer's instructions have been adhered to.
- 11) Power Sources – This product should be operated only from the type of power source indicated on the marking label. If you are not sure of the type of power supply to your home, consult your product dealer or local power company. For products intended to operate from battery power, or other sources, refer to the operating instructions.
- 12) Grounding or Polarization – This product may be equipped with a polarized alternating-current line plug (a plug having one blade wider than the other). This plug will fit into the power outlet only one way. This is a safety feature. If you are unable to insert the plug fully into the outlet, try reversing the plug. If the plug should still fail to fit, contact your electrician to replace your obsolete outlet. Do not defeat the safety purpose of the polarized plug.
- 13) Power-Cord Protection – Power-supply cords should be routed so that they are not likely to be walked on or pinched by items placed upon or against them, paying particular attention to cords at plugs, convenience receptacles, and the point where they exit from the product.
- 14) Protective Attachment Plug – The product is equipped with an attachment plug having overload protection. This is a safety feature. See Instruction Manual for replacement or resetting of protective device. If replacement of the plug is required, be sure the service technician has used a replacement plug specified by the manufacturer that has the same overload protection as the original plug.
- 15) Outdoor Antenna Grounding – If an outside antenna or cable system is connected to the product, be sure the antenna or cable system is grounded so as to provide some protection against voltage surges and built-up static charges. Article 810 of the National Electrical Code, ANSI/NFPA 70, provides information with regard to proper grounding of the mast and supporting structure grounding of the lead in wire to an antenna discharge unit, size of grounding conductors, location of antenna-discharge unit, connection of grounding electrodes, and requirements for the grounding electrode. See Figure A.
- 16) Lightning – For added protection this product during lightning storm, or when it is left unattended and unused for long periods of time, unplug it from the wall outlet and disconnect the antenna or cable system. This will prevent damage to the product due to lightning and power-line surges.
- 17) Power Lines – An outside antenna system should not be located in the vicinity of overhead power lines or other electric light or power circuits, or where it can fall into such power lines or circuits. When installing an outside antenna system, extreme care should be taken to keep from touching such power lines or circuits as contact with them might be fatal.
- 18) Overloading – Do not overload wall outlets, extension cords, or integral convenience receptacles as this can result in a risk of fire or electric shock.
- 19) Object and Liquid Entry – Never push objects of any kind into this product through openings as they may touch dangerous voltage points or short-out parts that could result in a fire or electric shock. Never spill liquid of any kind on the product.
- 20) Servicing – Do not attempt to service this product yourself as opening or removing covers may expose you to dangerous voltage or other hazards. Refer all servicing to qualified service personnel.
- 21) Damage Requiring Service – Unplug this product from the wall outlet and refer servicing to qualified service personnel under the following conditions:
 - a. When the power-supply cord or plug is damaged.
 - b. If liquid has been spilled, or objects have fallen into the product.
 - c. If the product has been exposed to rain or water.
 - d. If the product does not operate normally by following the operating instructions. Adjust only those controls that are covered by the operating instructions as an improper adjustment of other controls may result in damage and will often require extensive work by a qualified technician to restore the product to its normal operation.
 - e. If the product has been dropped or damaged in any way.
 - f. When the product exhibits a distinct change in performance – this indicates a need for service.
- 22) Replacement Parts – When replacement parts are required, be sure the service technician has used replacement parts specified by the manufacturer or have the same characteristics as the original part. Unauthorized substitutions may result in fire, electric shock, or other hazards.
- 23) Safety Check – Upon completion of any service or repairs to this product, ask the service technician to perform safety checks to determine that the product is in proper operation condition.
- 24) Wall or Ceiling Mounting – The product should be mounted to a wall or ceiling only as recommended by the manufacturer.
- 25) Heat – The product should be situated away from heat sources such as radiators, heat registers, stoves, or other products (including amplifiers) that produce heat.

Acclaim Portable Lectern Sound System Owners Manual

MADE IN USA



SIX YEAR WARRANTY

HAVING TROUBLE WITH YOUR SOUND SYSTEM?

CONDITION	POSSIBLE SOLUTION
No Sound (<i>power LED off</i>)	<ul style="list-style-type: none">• turn POWER switch ON• charge battery or plug in AC cord• leave plugged in for 48 hours to repair battery
Charge Indicator LED off No Sound (<i>power LED on</i>)	<ul style="list-style-type: none">• check for output from source• set Internal Speaker switch to ON• make sure all cables are completely plugged in• turn up volume control of input used• remove plug from speaker output if not using external speaker output
Shortened Battery Life	<ul style="list-style-type: none">• charge battery fully; if battery life continues to deteriorate, contact Anchor Audio customer service: (800) 262-4671
Distorted Sound	<ul style="list-style-type: none">• lower system volume control
Excessive Hum or Noise	<ul style="list-style-type: none">• use shielded cables• use balanced microphone

HAVING TROUBLE WITH YOUR WIRELESS SYSTEM? (WIRELESS MODELS ONLY)

CONDITION	POSSIBLE SOLUTION
No Sound (<i>RX Indicator: ON</i>)	<ul style="list-style-type: none">• set MUTE switch to on (<i>handheld mic only</i>)• turn up WIRELESS volume control• make sure mic is plugged into body pack transmitter
No Sound (<i>RX Indicator: OFF</i>)	<ul style="list-style-type: none">• push mic power button• turn Acclaim POWER switch on• make sure transmitter power switch is on• set receiver and transmitter to same channel• replace battery in transmitter

NEED MORE HELP? Acclaim Portable Lectern Setup & Operation Videos!
Visit Our Website: www.anchoraudio.com

ACCLAIM TECHNICAL SPECIFICATIONS

Rated Peak Power	20 watts	Weight	
Max SPL @ Rated Power	113 dB @ 1 meter	Base	42.5 lbs/ 19.3 kg
Frequency Response	60 Hz – 17 kHz	Lectern	29.5 lbs/ 13.4 kg
Charger (RC-6000)	19V DC/universal input (100Vac – 240Vac, 50 – 60Hz)	Inputs	
USB	5V 500mA	Lectern Microphone	Lo-Z, balanced, phantom power, XLR
Battery	12 volt rechargeable, 9 AH	Wired Microphone	Lo-Z, unbalanced, 1/4" phone
Dimensions		Line Input	Hi-Z, unbalanced, 1/4" phone
Base (HWD)	30.5" x 21.125" x 20.5" (77.5 x 53.7 x 52 cm)	Outputs	
Lectern (HWD)	15.75" x 21.125" x 8.5" (40 x 53.7 x 21.6 cm)	Line Output (post fader)	Lo-Z, 1/4" phone
		Speaker Out	4W, unswitched, 1/4" phone, 20W max



(Specifications Subject to Change Without Notice)

Anchor Audio Warranty

Anchor Audio products are warranted to be free from defects in materials and workmanship for the period of SIX (6) YEARS from the date of original purchase unless listed below, which are warranted for a period of TWO (2) YEARS:

- All wired and wireless microphones, beltpack transmitters, base station transmitters, base station receivers, and hands-free microphones
- Rechargeable batteries
- All woodworking
- CouncilMAN microphones and bases
- PortaCom and ProLink 500 systems in their entirety
- Assistive Listening systems in their entirety
- Accessories, cables, cases, and covers

Warranties are subject to the following conditions:

- Product must have been purchased from an authorized Anchor Audio Dealer
- Anchor Audio must perform or authorize all warranty services or warranty is void
- Warranty is void when equipment is subjected to negligent use, connection to improper power sources, misuse, and operation beyond specifications and limits
- Warranty shall not apply to exterior finish, AC power cords, bulbs, or any other failings due to normal wear
- Warranty is void when equipment is subjected to adverse temperature, humidity, moisture, or any condition not considered normal environmental conditions
- Products out of warranty cannot be repaired by Anchor Audio

To locate an authorized dealer near you, please contact sales@anchoraudio.com. Please contact Technical Support at www.AnchorAudio.com/technical-support-form.html to with any questions, to begin the Return Authorization process, or to verify your warranty period.

ANCHOR AUDIO CUSTOMER SERVICE
800.262.4671
FOR ADDITIONAL INFORMATION
visit www.anchoraudio.com

For System Setup & Operation Videos Visit Our Website: www.anchoraudio.com