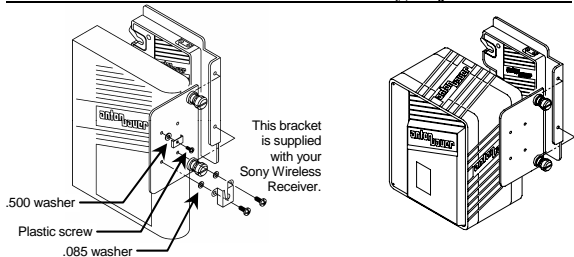


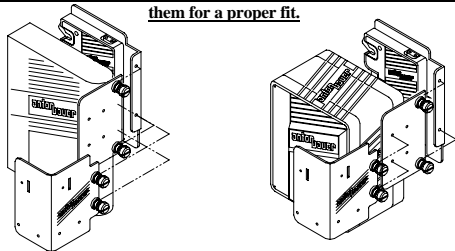
The power behind the best cameras capturing the best images in the world.<sup>sm</sup>

To mount a Wireless Receiver on the side of the Battery, use just the Side Plate.



The mounted Sony Audio Clip V Plate mounting uses one (1) 3 x 6 and one (1) .085 washer in top V Plate mounting hole and two (2) 4 x 5 mm pan head and two (2) #6 washers in bottom mounting.

To mount a Wireless Receiver behind the Battery, use both Plates and adjust them for a proper fit.



## ABWMK-KIT

### Installation Instructions

#### Available Separately

#### WRB-185, WRB-200 and WRB-201

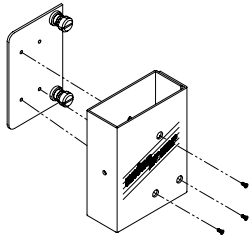
#### For Letrosomics Style Receivers

- Attaches directly to any Anton/Bauer<sup>®</sup> Wireless Receiver Plate.
- Able to “Piggy-Back” multiple Compartments.

WRB-185: Fits CR-175, CR-185, CR-187 and UCR-190 style Receivers

WRB-200: Fits UCR-195, UCR-195D, UCR-200D, UCR-205D, and UCR-210D style Receivers

WRB-201: Fits UCR-201 style receivers



**World Headquarters** 14 Progress Drive, Shelton, CT U.S.A.  
**Europe** Eurode Business Center, 6461KB Kerkrade, The Netherlands  
**Singapore** 6 New Industrial Road, #02-02 Hoe Huat Ind. Bld., Singapore 536199

[www.antonbauer.com](http://www.antonbauer.com)

Tel (203) 929-1100  
Tel +31 45-563-9220  
Tel 65 62975784

support@antonbauer.com  
eurosupport@antonbauer.com  
martinsoh@pacific.net.sg

7595-0106 Rev K