



WPD-MIX42RT
Wall Plate Input Select Switch,
Volume Control 10k Pot with
System Indicator



1601 Jack McKay Blvd. • Ennis, Texas 75119 U.S.A.
Telephone: 800.876.3333 • Fax: 800.765.3435



WPD-MIX42RT Wall Plate Input Select Switch

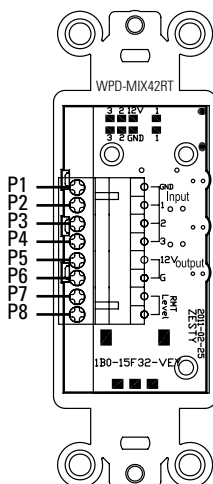
Owner's Manual

Features/Specifications

- White Decor Style Plate, ABS Material
- Fits a Single Gang Electrical Outlet
- Designed for Remote Activation of Atlas TSD-MIX42RT
- System Status Indicator (Red)
- 8-Conductor Interface Connection
- Level Control Via On Board 10k Ω Potentiometer
- Label Guard (Allows for Clean Custom Function Identification)
- Input Select Slide Switch
- Removable 4 Position Phoenix Style Connector, 5.08mm Pin Spacing, Qty. 1
- Removable 2 Position Phoenix Style Connector, 5.08mm Pin Spacing, Qty. 2
- Height - 4.5" (114mm)
- Width - 2.5" (63mm)
- Depth - 0.24" (6.4mm)
- Maximum Tested Distance 200 ft, 22-Gauge Wire

Electrical Hook-Up

- **Pin 1** - Ground (-)
- **Pin 2** - Input 1 Control
- **Pin 3** - Input 2 Control
- **Pin 4** - Input 3 Control
- **Pin 5** - +12VDC for Status Indicator
- **Pin 6** - GND for Status Indicator
- **Pin 7** - Remote Level Port
- **Pin 8** - Remote Level Port

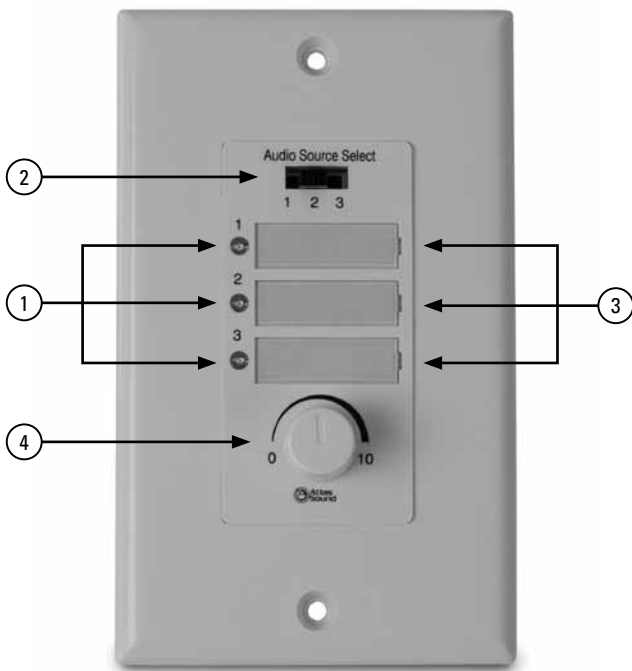


**Atlas
Sound**

1601 Jack McKay Blvd. • Ennis, Texas 75119 U.S.A.
Telephone: 800.876.3333 • Fax: 800.765.3435



Description



1. **Active Input Indicator** - Illuminates Red when the corresponding audio source input is selected.
2. **Audio Source Select** - Slide the switch to select the desired audio source input.
3. **Label Guard** - Remove plastic cover to insert custom label.
4. **Level Control** - Adjusts the level of the selected audio source. **Note:** If a page or signal is present, this 10k Ω level control will not have any effect on the page. It only effects inputs 1, 2, or 3 of the TSD-MIX42RT.

**Atlas
Sound**1601 Jack McKay Blvd. • Ennis, Texas 75119 U.S.A.
Telephone: 800.876.3333 • Fax: 800.765.3435



WPD-MIX42RT
Wall Plate Input Select Switch

Owner's Manual

Limited Warranty

All products manufactured by Atlas Sound are warranted to the original dealer/installer, industrial or commercial purchaser to be free from defects in material and workmanship and to be in compliance with our published specifications, if any. This warranty shall extend from the date of purchase for a period of three years on all Atlas Sound products, including SOUNDOLIER brand, and ATLAS SOUND brand products except as follows: one year on electronics and control systems; one year on replacement parts; and one year on Musician Series stands and related accessories. Additionally, fuses and lamps carry no warranty. Atlas Sound will solely at its discretion, replace at no charge or repair free of charge defective parts or products when the product has been applied and used in accordance with our published operation and installation instructions. We will not be responsible for defects caused by improper storage, misuse (including failure to provide reasonable and necessary maintenance), accident, abnormal atmospheres, water immersion, lightning discharge, or malfunctions when products have been modified or operated in excess of rated power, altered, serviced or installed in other than a workman like manner. The original sales invoice should be retained as evidence of purchase under the terms of this warranty. All warranty returns must comply with our returns policy set forth below. When products returned to Atlas Sound do not qualify for repair or replacement under our warranty, repairs may be performed at prevailing costs for material and labor unless there is included with the returned product(s) a written request for an estimate of repair costs before any nonwarranty work is performed. In the event of replacement or upon completion of repairs, return shipment will be made with the transportation charges collect.

EXCEPT TO THE EXTENT THAT APPLICABLE LAW PREVENTS THE LIMITATION OF CONSEQUENTIAL DAMAGES FOR PERSONAL INJURY, ATLAS SOUND SHALL NOT BE LIABLE IN TORT OR CONTRACT FOR ANY DIRECT, CONSEQUENTIAL OR INCIDENTAL LOSS OR DAMAGE ARISING OUT OF THE INSTALLATION, USE OR INABILITY TO USE THE PRODUCTS. THE ABOVE WARRANTY IS IN LIEU OF ALL OTHER WARRANTIES INCLUDING BUT NOT LIMITED TO WARRANTIES OF MERCHANTABILITY AND FITNESS FOR A PARTICULAR PURPOSE.

Atlas Sound does not assume, or does it authorize any other person to assume or extend on its behalf, any other warranty, obligation, or liability. This warranty gives you specific legal rights and you may have other rights which vary from state to state.

Service

Should your WPD-MIX42RT require service, please contact the Atlas Sound warranty department at 1-877-689-8055, ext. 1274 to obtain an RA number.

Atlas Sound Tech Support can be reached at 1-800-876-3333.

Visit our website at www.AtlasSound.com to see other Atlas products

©2012 Atlas Sound L.P. All rights reserved. Atlas Sound is a trademark of Atlas Sound L.P.
All other trademarks are the property of their respective owners. ATS004428 RevA 7/12



1601 Jack McKay Blvd. • Ennis, Texas 75119 U.S.A.
Telephone: 800.876.3333 • Fax: 800.765.3435