

## Foot Controller FC-IP



Part No. A9009-0003



Copyright © 2018

All rights reserved.

## **Original Instructions: English**

All rights reserved throughout the world. No part of this publication may be stored in a retrieval system, transmitted, copied or reproduced in any way, including, but not limited to, photocopy, photograph, magnetic or other record without the prior agreement and permission in writing of the Videndum Plc.

## **Disclaimer**

The information contained in this publication is believed to be correct at the time of printing. Videndum Production Solutions Ltd reserves the right to make changes to the information or specifications without obligation to notify any person of such revision or changes. Changes will be incorporated in new versions of the publication.

We are making every effort to ensure that our publications are updated on a regular basis to reflect changes to product specifications and features. Should this publication not contain information on the core functionality of your product, please let us know. You may be able to access the latest revision of this publication from our website.

Videndum Production Solutions Ltd reserves the right to make changes to product design and functionality without notification.

## **Trademarks**

All product trademarks and registered trademarks are the property of The Videndum Plc.

All other trademarks and registered trademarks are the property of their respective companies.

## **Published by:**

Videndum Production Solutions Ltd

Email: [technical.publications@videndum.com](mailto:technical.publications@videndum.com)



**Important information on the safe installation and operation of this product. Read this information before operating the product. For your personal safety, read these instructions. Do not operate the product if you do not understand how to use it safely. Save these instructions for future reference.**

## Warning Symbols Used in these Instructions

Safety cautions are included in these instructions. These safety instructions must be followed to avoid possible personal injury and avoid possible damage to the product.

**Symboles d'avertissements utilisés dans ces instructions** Des précautions de sécurité sont incluses dans ces instructions. Ces instructions de sécurité doivent être respectées pour éviter des blessures à la personne et des dommages au produit.



**WARNING!** Where there is a risk of personal injury or injury to others, comments appear supported by the warning triangle symbol. Where there is a risk of damage to the product, associated equipment, process or surroundings, comments appear supported by the word '**CAUTION**'.

**AVERTISSEMENT !** Des avis accompagnés du symbole triangulaire d'avertissement sont en place lorsqu'un risque de blessure à la personne ou à autrui existe. Des avis accompagnés du mot « **PRUDENCE !** » sont en place lorsqu'il existe un risque de dommage au produit, à l'équipement associé, au processus ou à l'environnement.

## Electrical Connection / Connexion électrique



**WARNING!** Always disconnect and isolate the product from the power supply before attempting any servicing or removing the covers.

**AVERTISSEMENT !** Risque de décharge électrique. Débranchez et isolez toujours le produit de l'alimentation électrique avant toute procédure d'entretien ou le retrait des couvercles.



**CAUTION!** The products must be connected to a power supply of the same voltage (V) and current (A) as indicated on the product. Refer to the technical specifications for the products

**PRUDENCE !** Ce produit doit être connecté à un approvisionnement en alimentation du même voltage (V) et courant (A) comme indiqué sur le produit. Consultez les spécifications techniques du produit



Use with IEEE 802.3af compatible PoE supply

Ce produit doit être utilisé avec une alimentation PoE compatible avec la norme IEEE 802.3af

## Mounting and Installation / Montage et installation



**WARNING!** Always ensure that all cables are routed so that they do not present any danger to personnel. Take care when routing cables in areas where robotic equipment is in use.

**AVERTISSEMENT !** Vérifiez toujours que les câbles d'alimentation et de communication auxiliaires sont acheminés de manière à ne présenter aucun danger au personnel.

Soyez vigilant lorsque vous acheminez des câbles dans des endroits où de l'équipement robotique est utilisé.

## Water, Moisture and Dust / Eau, humidité et poussière



**WARNING!** Protect the product from water, moisture and dust. The presence of electricity near water can be dangerous.

**AVERTISSEMENT !** Protégez le produit contre l'eau, l'humidité et la poussière. La présence d'électricité à proximité de l'eau peut présenter des dangers.



**WARNING!** When using this product outside, protect from rain using a suitable waterproof cover.

**AVERTISSEMENT !** Lorsque vous utilisez ce produit à l'extérieur, protégez-le de la pluie avec une protection imperméable adéquate.

## Operating Environment / Environnement d'opération



**CAUTION!** The product should not be used outside the operating temperature limits. Refer to the product technical specifications for the operating limits for the product.

**PRUDENCE !** Ce produit ne doit pas être utilisé hors ses limites de température de fonctionnement. Consultez les spécifications techniques du produit pour obtenir ses limites de fonctionnement.

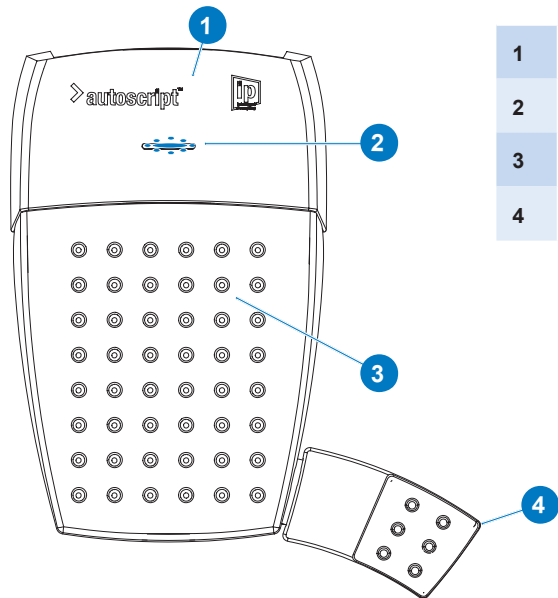
## Maintenance / Entretien



**WARNING!** Servicing or repair of this product must only be performed by qualified and trained engineers.

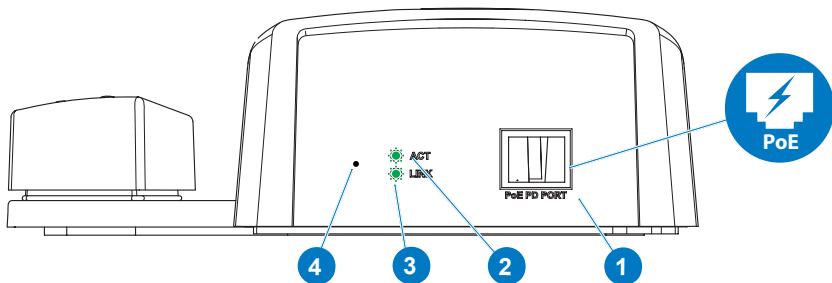
**AVERTISSEMENT !** L'entretien ou la réparation de ce produit doit seulement être effectué par des techniciens qualifiés et dûment formés.

## Top View



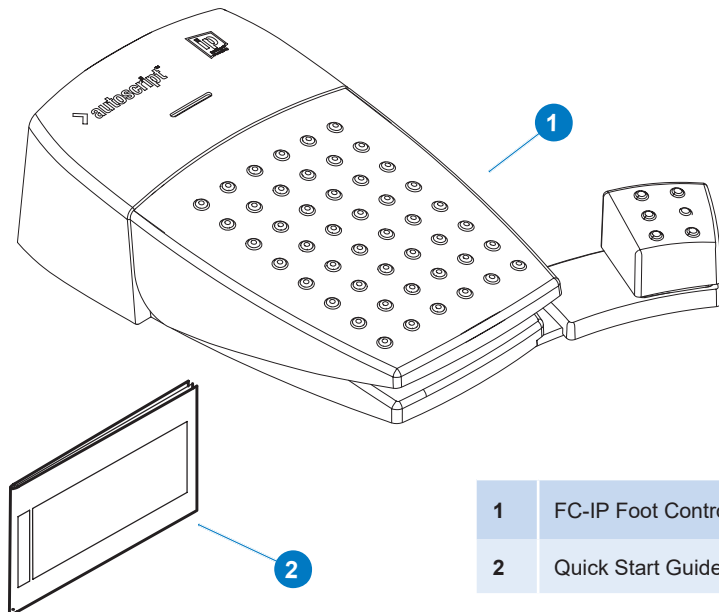
1	Foot Control
2	Status LED
3	Pedal
4	Button

## Front View



1	RJ45. Powered over Ethernet Requires 3rd party IEEE 802.3af compatible PoE supply or Xbox-IP (not included)
2	Data LED
3	Link LED
4	Factory Reset

## Box Contents



1 FC-IP Foot Controller

2 Quick Start Guide

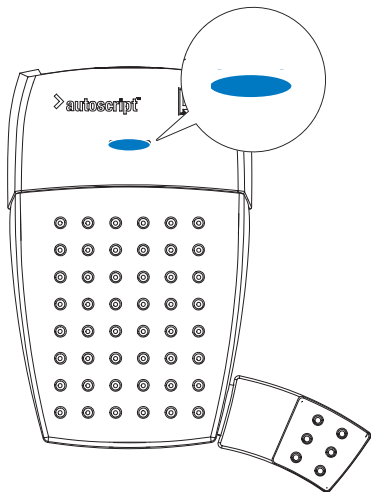
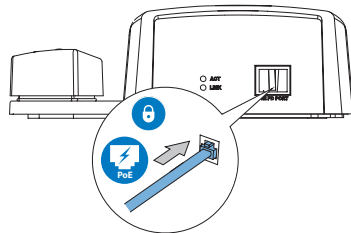


## Powering Up

The controller is automatically powered up when the PoE Ethernet cable Cat5 or Cat6 cable is attached.



Requires 3rd party IEEE 802.3af compatible PoE injector or XBox-IP (A9009-0001 not included)



### Status LED



Status LED and programmable function buttons flash once: **Powered on.**



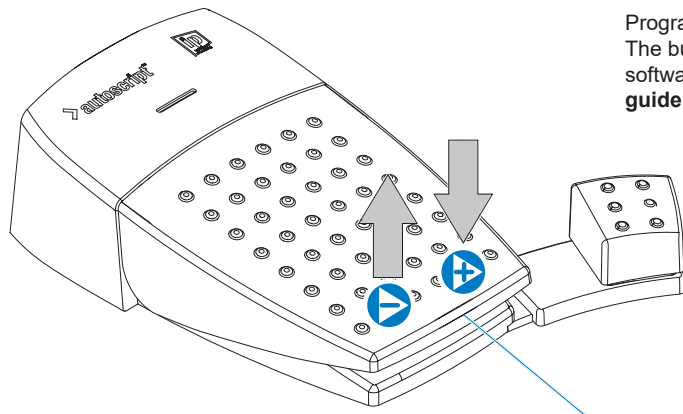
Flashing Blue light: **Connected to the network but not the application.**



Solid Blue light: **Connected to the network and the application.**



Solid Red light: **Connected to the network, the application and in use.**



Programmable function button.  
The button is set up in the WP-IP  
software. See **WP-IP software  
guide A9009-4983**.

Press the pedal down to start the scroll, the further it is pressed down the faster the scroll will operate. Sensitivity and dead-band range of the Foot Control can be adjusted in the Device Configuration in WP-IP

NB. The pedal can act as a function button. A single quick push of the pedal through its whole range and back will activate the assigned function. As a default the assigned function is the “Toggle Direction” function.

## Routine Maintenance

The FC-IP Foot Controller requires minimal routine maintenance, apart from checking the connections and overall operation periodically.

### Routine checks

During use, check the following:

- Check PoE Ethernet cable for signs of wear or damage. Replace as necessary.
- Check the PoE Ethernet cable is connected properly.
- Check the Buttons and scroll wheel all move freely.

### Cleaning

During normal use the only cleaning required should be a regular wipe over with a dry, lint-free cloth. Dirt accumulated during storage or periods of disuse may be removed with a vacuum cleaner. Particular attention should be paid to the connection port.



**WARNING!** Disconnect and isolate the product from the power supply before cleaning.  
**AVERTISSEMENT !** Débranchez et isolez toujours l'alimentation électrique avant de procéder au nettoyage.

---

## Physical Data

	FC-IP
Width*	195 mm (7.6 in)
Length*	232 mm (9.13 in)
Height*	63 mm (2.4 in)
Weight	950 g (2.1 lb)

## Programmable Function Buttons x 2

- 1 x Pedal
- 1 x Button

## Connector

- 1 x RJ45

## Power

- 3 W Max.
- Powered over Ethernet (PoE)
- Third party PoE Injector Required (IEEE 802.3af compatible PoE supply) or XBox-IP (not included)

## Status LED's

- Connection
- Data
- Link
- Status

## Environmental Data

- Operating temperature range  
+5°C to +40°C (+41°F to +104°F)
- Storage temperature range  
-20°C to +60°C (-4°F to +140°F)

Fault	Check
The FC-IP is not powering up	Check that the power over Ethernet source has a suitable power injector
	Check that the cable from the PoE source is firmly locked into the PoE input on the FC-IP
	Check that a quality Cat5 or Cat6 cable has been used to connect to the PoE injector
The FC-IP is powered up, but not controlling the prompted text	Check that any connections to controllers are correct and secured
	Confirm that the FC-IP is enabled in the Devices window
	Check that a quality Cat5 or Cat6 cable has been used to connect the controller to the PoE injector
The FC-IP has locked and is not responsive	Power cycle the FC-IP by removing the PoE Injector connection
The FC-IP is not discovered on a local IP network	Check that the FC-IP and the software application are not separated by an IP gateway
	Check that the device is not already connected to another different network
	If added to the system manually check the correct details are entered in the Manually Add Device fields
The FC-IP IP address is not configurable correctly from the application	Check that the correct IP address has been added for the FC-IP. (i.e. has this IP address been used for a different device)

## FCC Certification



## FCC Warning

Changes or modifications not expressly approved by the party responsible for compliance could void the user's authority to operate the equipment.

## FCC Declaration of Conformity

This product complies with Part 15 of the FCC Rules. Operation is subject to the following two conditions:

1. This product may not cause harmful interference.
2. This product must accept any interference received, including interference that may cause undesired operations.

## Declaration of Conformity



Videndum Production Solutions Limited declares that this product has been manufactured in accordance with BS EN ISO 9001:2008.

This product complies with the following EU Directives:

- EMC Directive 2014/30/EU

Compliance with these directives implies conformity to applicable harmonised European standards (European Norms) which are listed on the EU Declaration of Conformity for this product or product family. A copy of the Declaration of Conformity is available upon request.

## Environmental considerations

## European Union Waste of Electrical and Electronic Equipment (WEEE) Directive (2012/19/EU)



This symbol marked on the product or its packaging indicates that this product must not be disposed of with general household waste. In some countries or European Community regions separate collection systems have been set up to handle the recycling of electrical and electronic waste products. By ensuring this product is disposed of correctly, you will help prevent potentially negative consequences for the environment and human health. The recycling of materials helps conserve natural resources.

Visit our website for information on how to safely dispose of this product and its packaging.

### In countries outside the EU:

Dispose of this product at a collection point for the recycling of electrical and electronic equipment according to your local government regulations.

Publication No. A9009-4985/3



[www.autoscript.tv](http://www.autoscript.tv)