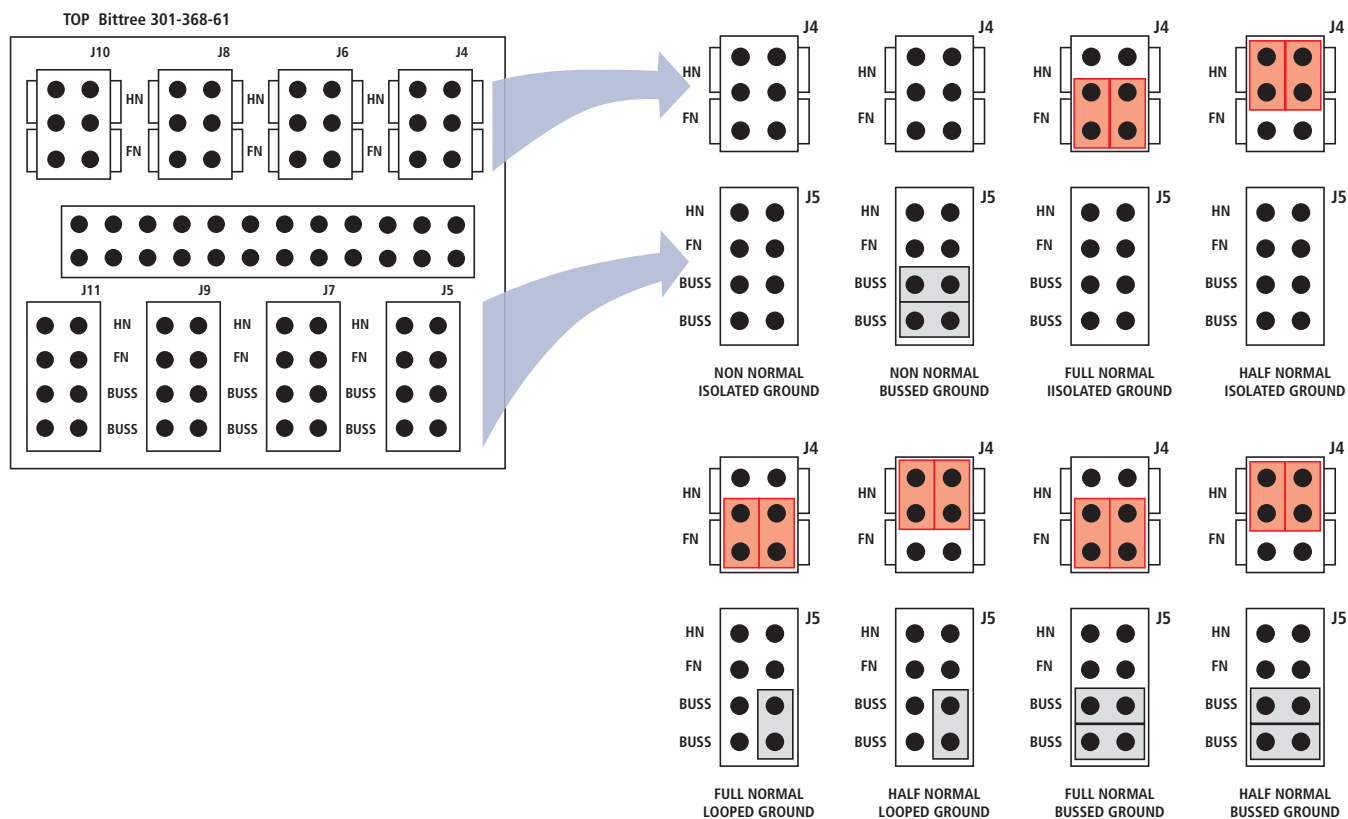


These programming instructions are for the newer 968 Rev-A Series.
Programming instructions for the original 968 Series are on the following page.

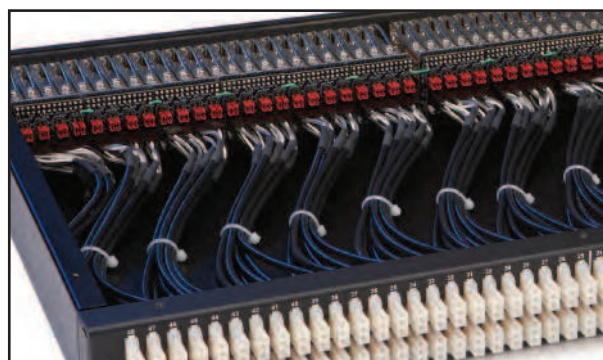


How to Identify a 968 Series Programmable Patchbay:

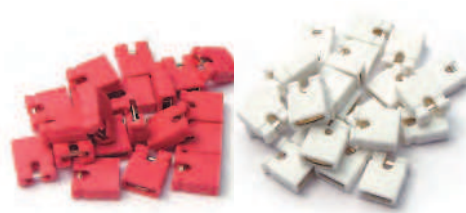
968 Series programmable patchbays can only be identified by removing the top dust cover and looking for the presence of red and white programming shunts inside.

How to Change the Programming for a Circuit:

1. Remove the top dust cover to expose the programming shunts.
2. Find your desired configuration in the diagram above.
3. Arrange the programming shunts to match the appropriate diagram. Note: Each circuit can be programmed independently.
4. Ample shunts are provided with every programmable patchbay. All shunts should be placed vertically. Red shunts are used for grounding options. White shunts (shown as light gray above) are used for normalizing options.
5. Replace the dust cover.



968 Series Programmable patchbay shown with dust cover removed, exposing red and white internal programming shunts.



PROGRAMMING SHUNTS