

Thank you for your purchase of:



audiofetch

By Broadcastvision Entertainment

The dynamic AudioFetch system enables Android and Apple smartphones and tablets with the AudioFetch App to receive local audio from TVs etc. AudioFetch should operate in a “plug-and-play” manner when one audio source per channel is connected to AudioFetch and the Ethernet jack is on a suitable WiFi router. Additional instructions are included below. Please note that AudioFetch can be ordered/expanded in 4 channel increments.

Your AudioFetch application is as follows:

Proposal Number : _____

AudioFetch Model : _____

Specific Cables Requested : _____

Note: If no specific cables or lengths are requested, a 25’ Ethernet cable and 6’ RCA to stereo jack cables for each channel will be enclosed.

Additional cable lengths and types are available at monoprice.com

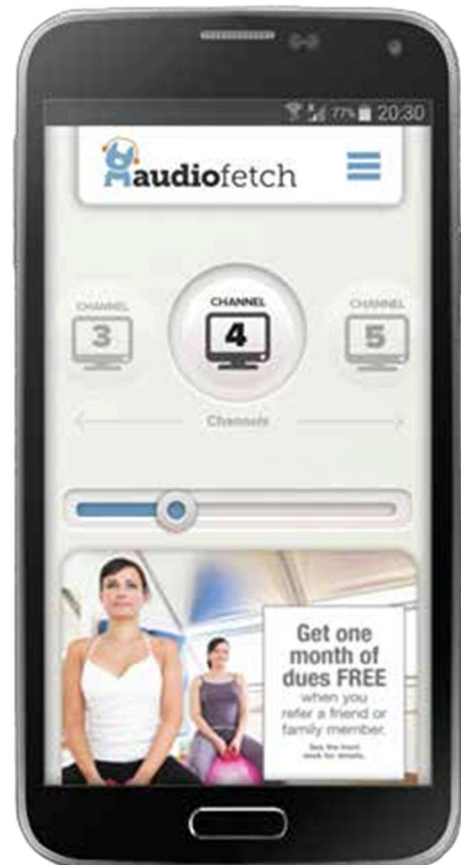
Please call technical support at 888.330.4283 x3 if your application differs from the above.

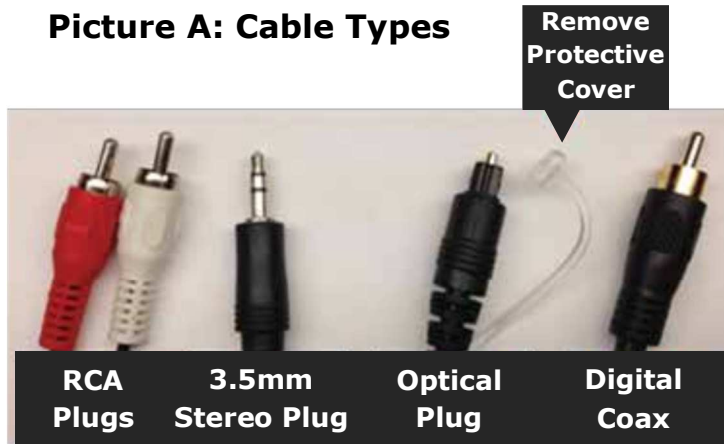
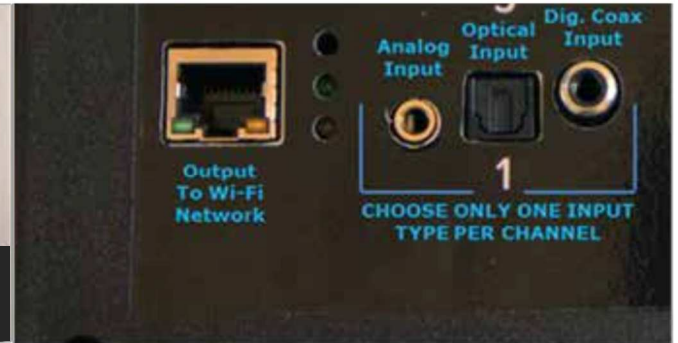
CONTENTS

1. The AudioFetch App
2. Connecting AudioFetch to audio sources and WiFi
3. Network Traffic Information
4. The AudioFetch "Swag" - Signage, TableTents, Window Stickers
5. The AudioFetch Ad Portal – post your custom content to the bottom of the App
6. Expanding AudioFetch for Additional Channels - Add a Card
7. OPTIONAL - Accordio - Operation with Existing FM, 900 MHz Wireless systems
8. Configuration Management - "The Doghouse"
9. Regulatory Compliance Statements

1. The AudioFetch App

Download the latest AudioFetch app for free from the Google Play or Apple App store. Familiarize yourself with the drop down menu including the help menu section should it be needed during installation.



Picture A: Cable Types**Picture B: Audio Input**

2. Connecting AudioFetch to audio sources and WiFi

Connect each audio source to a channel input on AudioFetch. There are 3 input options per channel. **CHOOSE ONLY ONE INPUT PER CHANNEL.** Two popular analog connections are RCA (one red and one white) and a 3.5mm stereo jack (headphone jack). Either one can be connected into the Analog input of AudioFetch which is a 3.5mm stereo jack. Digital connection options are optical and digital coax.

Note that RCA and digital coax connections are not the same. A digital coax output (on TV, etc.) cannot connect into the AudioFetch analog input. An RCA analog output (from TV, etc.) cannot connect into the AudioFetch digital coax input. The configuration management pages can be logged into as described below to determine if a good audio signal is connected into the channel. When connecting via digital inputs, always choose the audio source type (in the TV's setup) as PCM since Dolby-encoded signals are not supported.

3. Network Traffic Information

Traffic direction: **Mobile Device (AudioFetch app) → AudioFetch device:**

<u>Protocol</u>	<u>source port</u>	<u>dest port</u>	
UDP multicast (239.255.255.250)	p_1 *	1900	(this is primary SSDP discovery)
TCP	p_2 *	80	
TCP	p_3 *	6971	
UDP broadcast (255.255.255.255)	30981	30981	(used for fallback discovery)
DNS QUERY	(usual for DNS)	(usual)	(used for fallback discovery)

Traffic direction: **AudioFetch device → Mobile Device (AudioFetch app):**

<u>Protocol</u>	<u>source port</u>	<u>dest port</u>	
UDP	1900	p_1 *	
TCP	80	p_2 *	
TCP	6971	p_3 *	
UDP	6970	6970	This is the audio stream
UDP multicast (239.255.255.250)	1900	1900	(used for SSDP and fallback discovery)
UDP	30981	30981	(used for fallback discovery)
DNS RESPONSE	(usual for DNS)	(usual)	(used for fallback discovery)

* p_1 and p_2 indicate port numbers which have been chosen by the mobile device's operating system and typically are different each time the app runs

Fallback discovery traffic is required only if the network blocks standard SSDP discovery mechanism. If SSDP fails then AudioFetch will automatically fall back to alternate discovery mechanisms.

In some cases, with a complex network and tight security restrictions on traffic, a DNS discovery method is required. If so, please contact AudioFetch for information about making minor adjustments to your network's DNS server entries.

How to set up guest access to your network

For **E1200 E1500 E2500 E3200 E4200**

You can use your router's guests access feature to provide your guests with access to the internet, while **restricting their access to other resources on your local network**. The guest network is shown as a open, unsecure wireless network that your guests can easily connect to. To prevent unauthorized users from using your internet access, your guest network requires that a password be entered for Internet access. The guest network is enabled by default

Per the Linksys router user's manual language excerpted above, guest networks are designed to prevent communication between the guest and local networks. The guest network is only for access to the internet.

Since the guest network configuration is preventing communication between mobile devices and AudioFetch, there's no way the AudioFetch system can work on WiFi networks in guest network mode. Mobile devices need to have access/communication with the AudioFetch box.

The solution is not to use the guest network but instead use the main wireless network inherent in most routers. Some guest networks have been found to be plug-n-play with AudioFetch but this note of caution is made.

4. The AudioFetch "Swag" - TV Signage, TableTents, and Window Stickers



Post the provided signage on the TVs and the table tents and door/window stickers to enable patrons to easily obtain and use the AudioFetch App.

5. The free AudioFetch Ad Portal

Log into the ad portal at www.audiofetch.com/ads using the username and password provided below to post your ad/info graphic that can direct users to website, an e-mail address, and/or phone number that you specify. Add multiple graphics that rotate through at the time duration you specify. Call 888.330.4283 x3 to confirm your log-in credentials if needed.

Username : _____

Password : _____

6. Expanding AudioFetch for Additional Channels - Add a Card

Determine which model you currently have and order 1 or more expansion cards:

4



FETCH4 NE - 4 Channel Non-Expandable

4



FETCH4 - 4 Channel Expandable

8



FETCH8 - 8 Channel Expandable

20+



ADD a 2nd, 3rd, or 4th AudioFetch box
FETCH20+ - 20+ Channel Expandable

16



FETCH16 - 16 Channel Expandable

12

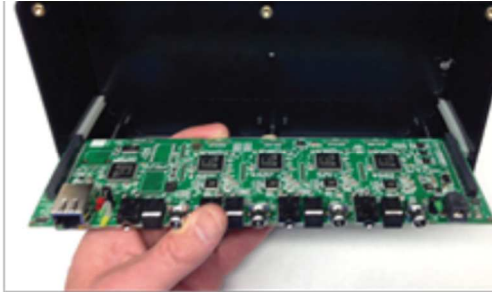


FETCH12 - 12 Channel Expandable

Then follow these instructions to add additional card(s):

1

Remove the AudioFetch Cover then slide out the base AudioFetch card from the side rails.

**2**

Connect the expansion channel card to the base card as seen here.

**3**

Place the base card into the side rails.

4

Use an X-Acto knife to cut through the protective covering of the expansion card holes then reattach the top cover.

7. OPTIONAL - Accordio - Provides Wireless Inputs using existing or new FM/900 MHz transmitters to save cabling audio sources to AudioFetch.



Accordio - Available in 4 or 8 channel increments

Fitness centers and sports bars often have existing FM or 900MHz audio transmitters from Broadcastvision, Cardiotheater, Cardiovision, Mye, SportsSelect, etc. The Accordio box can be configured in 4 or 8 channel increments to receive audio wirelessly from transmitters at TVs or cable/satellite boxes. When ordering Accordio, specify the desired channel line-up by channel scheme and channel number (i.e.: Broadcastvision Series 2, channels 1-4 or

Cardiotheater xTV channels 1-8) corresponding to channels A-D or A-H of each Accordio box.

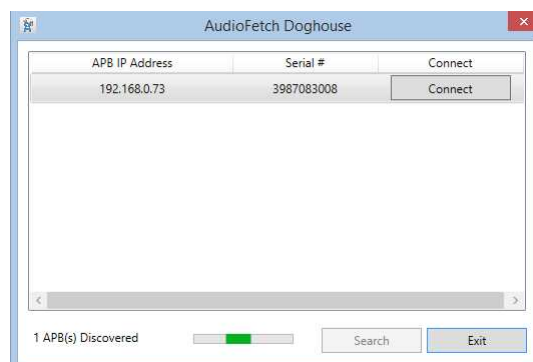
A stereo jack to stereo jack cable is included to cable the received audio to the AudioFetch channel inputs:



8. Configuration Management – “The Doghouse”

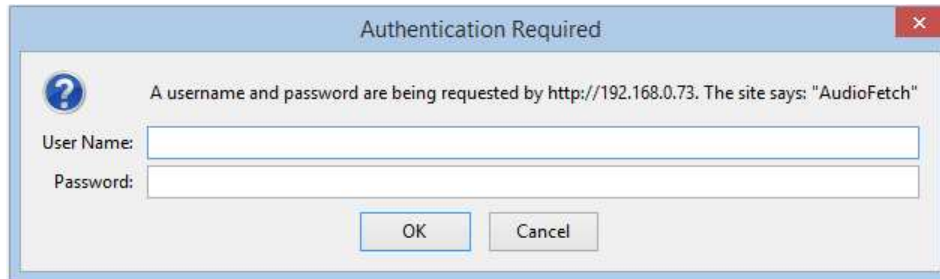
View configuration settings using a web browser on a device (PC, Tablet, mobile phone etc.) that is connected to the same network as AudioFetch.

On a Windows device: Run the Doghouse Utility found at www.audiofetch.com/doghouse to locate AudioFetch on the network. Once the AudioFetch box is displayed, click the “Connect” button to open the starting configuration page on a browser.



On Android or Apple devices: Search and download “AudioFetch Doghouse” in the Google Play (Android OS devices) or Apple App store (Apple devices with iOS operating system).

A username/password is required, default is: ADMIN/admin.



Authentication Required


A username and password are being requested by http://192.168.0.73. The site says: "AudioFetch"

User Name:

Password:

OK Cancel

You will see a welcome page similar to below:



audiofetch

NAVIGATION

[Welcome Page](#) [Network Setup](#) [Multi-Box Setup](#) [Channels Setup](#) [Audio Settings](#) [System Status](#) [Tools & Utilities](#) [Contact & Links](#)

WELCOME

Welcome to the AudioFetch Doghouse
(configuration management)

Navigate using the links above

[Link to AudioFetch reporting and ads portal online](#)

© 2014 - 2016 AudioFetch

Use the links in the **NAVIGATION** section to access each of the configuration pages.

On the **NETWORK SETUP** page check the “Use Automatic IP Address” box to AudioFetch receive its’ IP address automatically (from the network’s DHCP server). Or uncheck this box and enter values for:

Manual IP Address

Subnet Mask

Gateway

The values must be correct for operation with the connected network, contact your IT network administrator for instructions if needed.

After any changes are made on the **NETWORK SETUP** page, the “Save Settings” button at bottom of page must be clicked, otherwise the new settings will be lost at next power cycle. When this button is clicked, the settings are saved and the AudioFetch box will automatically restart. If DHCP assigns a new/different IP address after the restart, then use the Doghouse Utility again.

**NAVIGATION**

[Welcome Page](#) [Network Setup](#) [Multi-Box Setup](#) [Channels Setup](#) [Audio Settings](#) [System Status](#) [Tools & Utilities](#) [Contact & Links](#)

NETWORK SETUP

Use Automatic IP Address
Manual IP Address

NETWORK STATUS

IP Address (being used)
Subnet Mask (being used)
Gateway (being used)
Ethernet Connection Speed 100M 10M
MAC Address

Warning - Save Settings button will cause restart of this AudioFetch box

Where large numbers of channels are required, multiple AudioFetch boxes can be connected to the same network (up to 4). The **MULTI-BOX SETUP** page is used to configure AudioFetch to work correctly in multi-box installations.

Most AudioFetch installations are single-box, in this case ensure that “BOX A” is selected from the drop-down list - as shown in the image below (this is the factory default setting).



NAVIGATION

[Welcome Page](#) [Network Setup](#) [Multi-Box Setup](#) [Channels Setup](#) [Audio Settings](#) [System Status](#) [Tools & Utilities](#) [Contact & Links](#)

AUDIOFETCH MULTI-BOX SETUP

This box (SN: 3987083008) is set to be:
 (changing this setting will clear the list of AF Boxes below - just click the detect link again)

Channel ordering for multi-box systems is defined by assigning a letter (A, B, C, D) to each box. The channels from BOX A will appear first in the AudioFetch App list of channels, BOX B channels will be next, etc.

Each box must be assigned a different letter by going into the Doghouse for each box, Please see the AudioFetch User Manual for further details and examples.

Select the letter for **this AudioFetch Box** in the dropdown list above, if only using one AudioFetch Box then leave it set to A

[Click here to detect other AudioFetch Boxes](#) (must be on the same subnet to detect)
 If the same box (sn) appears twice, please click the link again to re-scan.

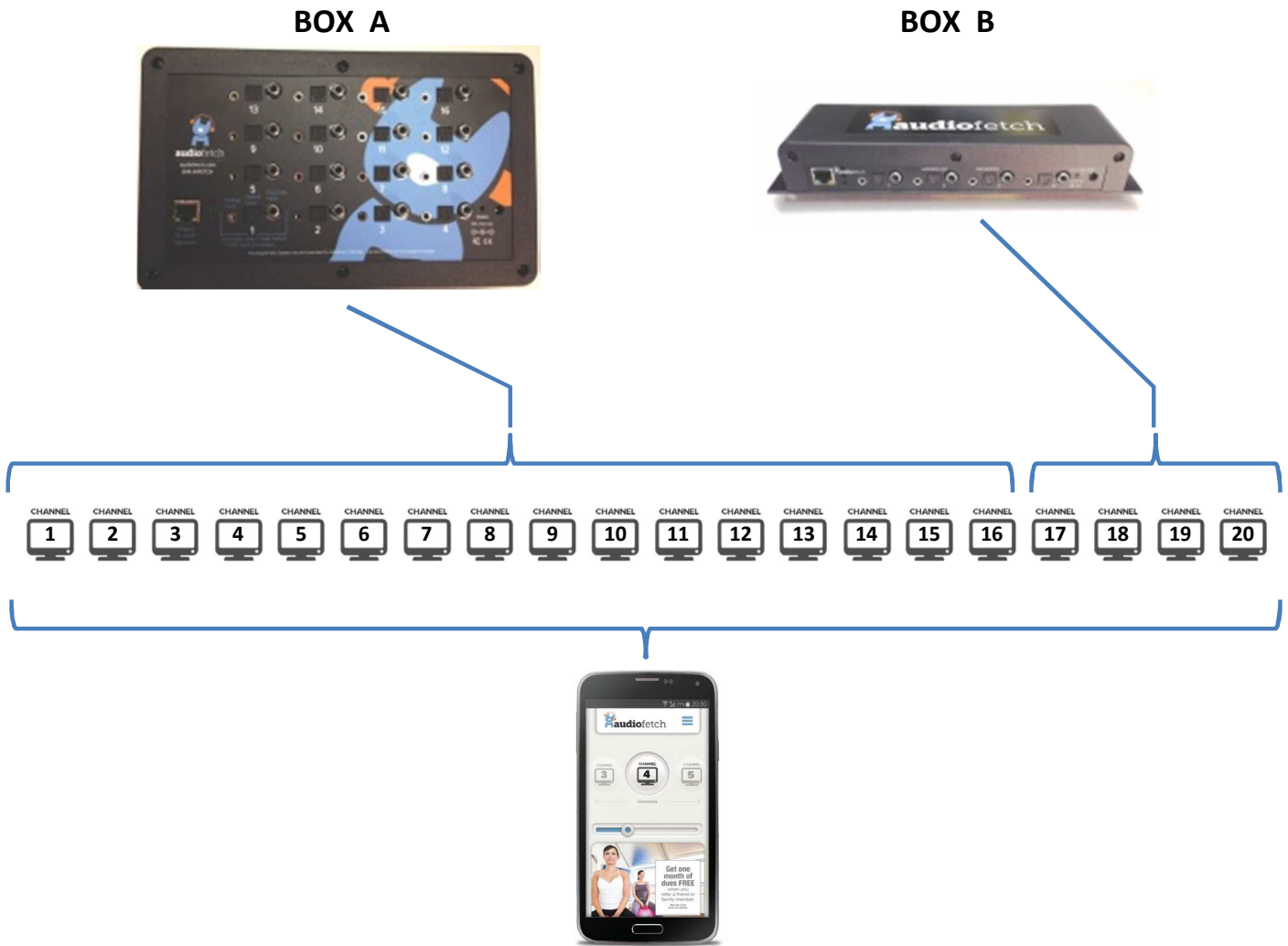
IP Address	MAC Address	Serial Number	Setting
192.168.0.73	00-1e-c0-ae-bd-c9	3987083008	BOX A
--	--	--	--
--	--	--	--
--	--	--	--

In multi-box installations, the AudioFetch App needs to know how to coordinate the order of channels it displays with channels from each of the AudioFetch boxes present. This is accomplished by designating the AudioFetch boxes present as:

BOX A BOX B BOX C or BOX D

The channels from BOX A will be displayed first by the AudioFetch App, channels from BOX B will be displayed next, etc.

For example, in a 2-box installation where a 16-channel box has been designated BOX A and a 4-channel box has been designated BOX B:



Each AudioFetch box must be separately configured with a BOX A/B/C/D designation. Default from the factory is BOX A, so when installing a multi-box AudioFetch system, one **must** access

Doghouse for each and every box and set the desired designation, to ensure channels from each of the boxes are mapped to the desired display order (and numbering) on the AudioFetch App.

IMPORTANT: Each box must have a different designation!

If two or more boxes have the same designation, then the system will not operate correctly. Accessing the Doghouse and configuring the BOX designations is mandatory in multi-box installations!

To configure the boxes in a multi-box installation:

1. Decide how you want the channels from each box to be ordered by the App (which box's channels display first, second, third, etc.)
2. Access the Doghouse for the first box (You want the App to display this box's channels first), navigate to the **MULTI-BOX SETUP** page and use the drop-down selector to select "BOX A"
3. Access the Doghouse for the second box, navigate to the **MULTI-BOX SETUP** page and use the drop-down selector to select "BOX B"
 - a. NOTE: Each box has its own Doghouse, you must access each box's Doghouse separately.
 - b. Use the Doghouse Utility to find/display all of the boxes on the network
4. If a third box is present: access the Doghouse for the third box, navigate to the **MULTI-BOX SETUP** page and use the drop-down selector to select "BOX C"
5. If a fourth box is present: access the Doghouse for the fourth box, navigate to the **MULTI-BOX SETUP** page and use the drop-down selector to select "BOX D"

Note that a maximum of 4 boxes are supported in a multi-box system.

To assist in setup, the Doghouse **MULTI-BOX SETUP** page contains a link to detect/display info about other boxes present on the LAN. Click the link, and then a notification page will appear for about 5 seconds while the other boxes are being detected. Then the **MULTI-BOX SETUP** page will display again with the list of boxes filled out. See the example below which shows the detection results for a 3-box system.

When the drop-down selector is used to change the box designation, the list of other boxes is cleared. In this case just click the detection link again to re-display all the boxes.



NAVIGATION

[Welcome Page](#) [Network Setup](#) [Multi-Box Setup](#) [Channels Setup](#) [Audio Settings](#) [System Status](#) [Tools & Utilities](#) [Contact & Links](#)

MULTI-BOX SETUP

This box (SN: 3987083008) is set to be:
 (changing this setting will clear the list of AF Boxes below - just click the detect link again)

Channel ordering for multi-box systems is defined by assigning a letter (A, B, C, D) to each box. The channels from BOX A will appear first in the AudioFetch App list of channels, BOX B channels will be next, etc.

Each box must be assigned a different letter by going into the Doghouse for each box, Please see the AudioFetch User Manual for further details and examples.

Select the letter for **this AudioFetch Box** in the dropdown list above, if only using one AudioFetch Box then leave it set to A

[Click here to detect other AudioFetch Boxes](#) (must be on the same subnet to detect)
 If the same box (sn) appears twice, please click the link again to re-scan.

IP Address	MAC Address	Serial Number	Setting
192.168.0.236	00-1e-c0-dd-10-88	1341657088	BOX A
192.168.0.196	00-1e-c0-ae-ac-e4	123456789	BOX B
192.168.0.73	00-1e-c0-ae-bd-c9	3987083008	BOX C
--	--	--	--

© 2014 - 2016 AudioFetch

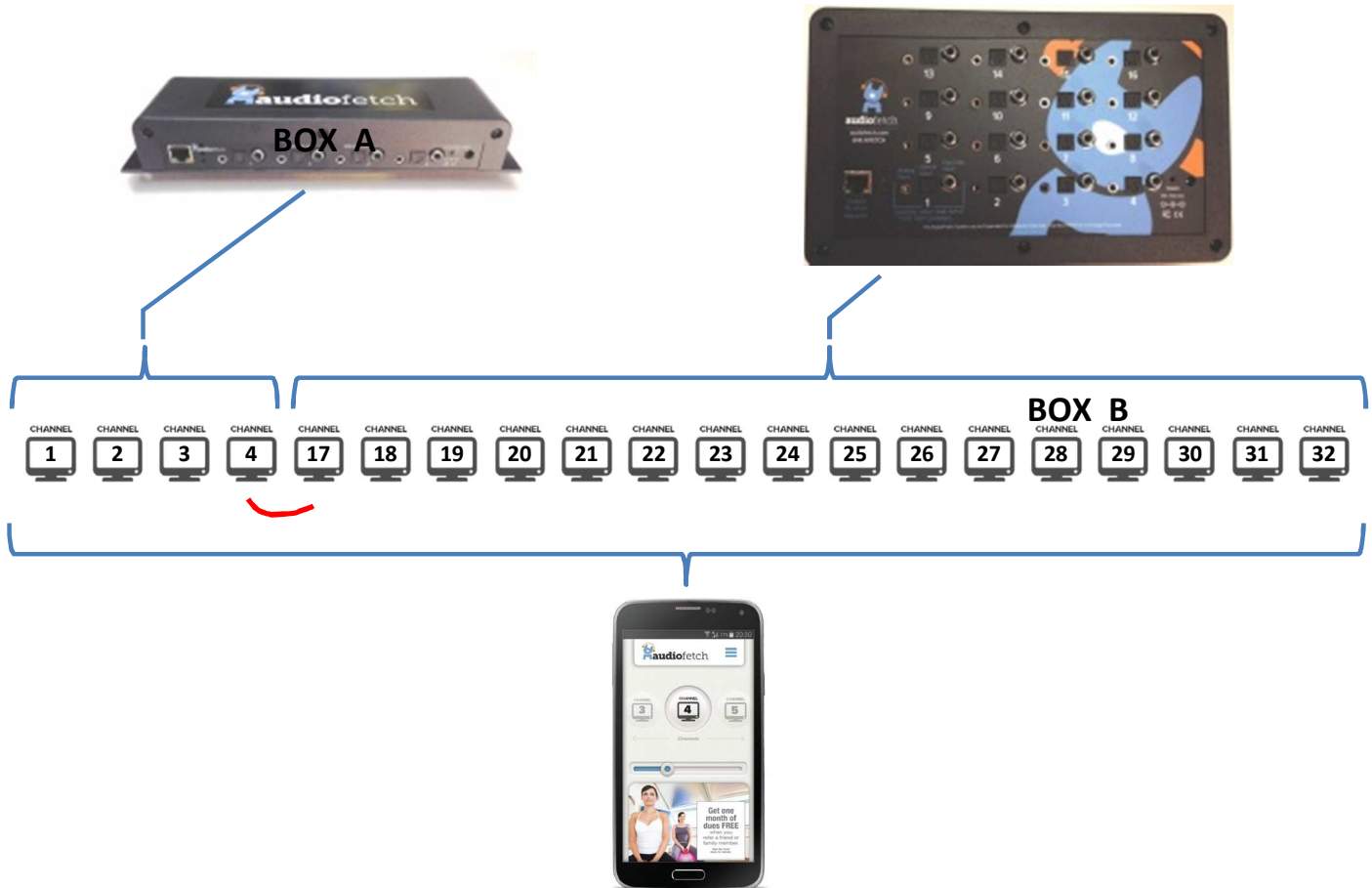
When setting up a multi-box system, use the detect link to double-check that all boxes have different/unique designations. For example, this display of detected boxes indicates a problem because two boxes are set to the same designation:

IP Address	MAC Address	Serial Number	Setting
192.168.0.73	00-1e-c0-ae-bd-c9	3987083008	BOX A !
192.168.0.236	00-1e-c0-dd-10-88	1341657088	BOX A !
192.168.0.196	00-1e-c0-ae-ac-e4	123456789	BOX B
--	--	--	--

More about multi-box channel numbering in the App:

The App by default reserves 16 channels for each box when displaying channel numbers in a multi-box system – this is because each box can potentially contain up to 16 channels. This has a special impact when boxes with fewer than 16 channels are used.

In the previous example, a 2-box system had one 16-channel box designated as BOX A and one 4-channel box designated as BOX B. What if the designations were reversed? In this case, the App would display channels 1-4 for BOX A (the 4-channel box), and display channels 17-32 for BOX B, like this:



While there is nothing wrong with this default channel numbering in the App, it may be preferable to have continuous channel numbers. If so, the **CHANNELS SETUP** page, described next, can be used to adjust the channel numbers displayed by the App.

The **CHANNELS SETUP** shows the installed channels and allows alternate names/numbers to be assigned for each channel. The “Enable” checkboxes can be used to disable individual channels - the App will no longer display any which are un-checked.

The default **CHANNELS SETUP** page for a 16-channel box looks like this:



NAVIGATION

[Welcome Page](#) [Network Setup](#) [Multi-Box Setup](#) [Channels Setup](#) [Audio Settings](#) [System Status](#) [Tools & Utilities](#) [Contact & Links](#)

CHANNEL SETUP - STEREO

Name	Enable	FW revision	Name	Enable	FW revision
Channel 1	<input checked="" type="checkbox"/>	2015-02-02	Channel 9	<input checked="" type="checkbox"/>	2015-02-02
Channel 2	<input checked="" type="checkbox"/>	2015-02-02	Channel 10	<input checked="" type="checkbox"/>	2015-02-02
Channel 3	<input checked="" type="checkbox"/>	2015-02-02	Channel 11	<input checked="" type="checkbox"/>	2015-02-02
Channel 4	<input checked="" type="checkbox"/>	2015-02-02	Channel 12	<input checked="" type="checkbox"/>	2015-02-02
Channel 5	<input checked="" type="checkbox"/>	2015-02-02	Channel 13	<input checked="" type="checkbox"/>	2015-02-02
Channel 6	<input checked="" type="checkbox"/>	2015-02-02	Channel 14	<input checked="" type="checkbox"/>	2015-02-02
Channel 7	<input checked="" type="checkbox"/>	2015-02-02	Channel 15	<input checked="" type="checkbox"/>	2015-02-02
Channel 8	<input checked="" type="checkbox"/>	2015-02-02	Channel 16	<input checked="" type="checkbox"/>	2015-02-02

Save Settings

© 2014 - 2016 AudioFetch

All installed channels are enabled and all the channel name fields are blank. The App will display its default channel numbers for this box, as described above.

NOTE: Boxes with fewer channels installed will show the non-installed channels greyed out.

The channel numbers displayed by the App may be modified by making entries in the “Name” fields. The App will display *the first four characters* of the name entry instead of the usual channel number.

So taking the example just above, where a 4-channel box has been defined as BOX A and a 16-channel box has been defined as BOX B, channel names could be re-defined for BOX B like this (BOX B’s Doghouse):



NAVIGATION

[Welcome Page](#) [Network Setup](#) [Multi-Box Setup](#) [Channels Setup](#) [Audio Settings](#) [System Status](#) [Tools & Utilities](#) [Contact & Links](#)

CHANNEL SETUP - STEREO

Name	Enable	FW revision	Name	Enable	FW revision
Channel 1 <input type="text" value="5"/>	<input checked="" type="checkbox"/>	2015-02-02	Channel 9 <input type="text" value="13"/>	<input checked="" type="checkbox"/>	2015-02-02
Channel 2 <input type="text" value="6"/>	<input checked="" type="checkbox"/>	2015-02-02	Channel 10 <input type="text" value="14"/>	<input checked="" type="checkbox"/>	2015-02-02
Channel 3 <input type="text" value="7"/>	<input checked="" type="checkbox"/>	2015-02-02	Channel 11 <input type="text" value="15"/>	<input checked="" type="checkbox"/>	2015-02-02
Channel 4 <input type="text" value="8"/>	<input checked="" type="checkbox"/>	2015-02-02	Channel 12 <input type="text" value="16"/>	<input checked="" type="checkbox"/>	2015-02-02
Channel 5 <input type="text" value="9"/>	<input checked="" type="checkbox"/>	2015-02-02	Channel 13 <input type="text" value="17"/>	<input checked="" type="checkbox"/>	2015-02-02
Channel 6 <input type="text" value="10"/>	<input checked="" type="checkbox"/>	2015-02-02	Channel 14 <input type="text" value="18"/>	<input checked="" type="checkbox"/>	2015-02-02
Channel 7 <input type="text" value="11"/>	<input checked="" type="checkbox"/>	2015-02-02	Channel 15 <input type="text" value="19"/>	<input checked="" type="checkbox"/>	2015-02-02
Channel 8 <input type="text" value="12"/>	<input checked="" type="checkbox"/>	2015-02-02	Channel 16 <input type="text" value="20"/>	<input checked="" type="checkbox"/>	2015-02-02

Save Settings

© 2014 - 2016 AudioFetch

IMPORTANT: The “Save Settings” button must be clicked after any changes are made, otherwise the new settings will be lost at the next power cycle.

With the redefined channel names shown above, our 2-box example system will now have the App displaying a continuous set of channel numbers: 1-4 for the 4-channel BOX A, and 5-20 for the 16-channel BOX B.

The **AUDIO SETTINGS** page is used to access two different sets of configurations:

AUDIO SETTINGS

PUBLIC ADDRESS

The AUDIO SETTINGS section displays current audio status (signal level, active input source) for the channel selected from the drop-down list, and allows the gain to be adjusted. Status begins updating only after AudioFetch has connected to the network, therefore when using this page be sure the AudioFetch box is connected to a working network.

To set the Audio Gain:

1. Select the desired channel to adjust from the drop-down list
2. Monitor the Peak Audio Status number, if an active audio source is connected then it will constantly change.
 - a. If it remains at 0% then check the audio connections, something is likely wrong in the cabling or audio source
3. Optimum Peak Audio Status is when the status hits 70% to 90% at its maximum
4. If Peak Audio Status is too low or too high, enter a new value for Audio Gain. Values entered can be numbers like 7 or 9.0 or 12.5 (the tenths digit can only be "0" or "5"). Acceptable range is -100.0 to 20.0. Press the Enter key or click the "Save" button to save the new gain value.
 - a. After saving, you should notice a corresponding change in the Peak Audio Status level immediately
 - b. Keep adjusting the Audio Gain until Peak Audio Status is within optimum range.
5. Repeat this procedure for all audio channels

Here is an example of the gain for Channel 2 set to 10.5

**NAVIGATION**

[Welcome Page](#) [Network Setup](#) [Multi-Box Setup](#) [Channels Setup](#) [Audio Settings](#) [System Status](#) [Tools & Utilities](#) [Contact & Links](#)

AUDIO SETTINGS - STEREOAdjust settings for channel: Channel 2 ▾

Audio Gain (dB) Default: 10.0
Valid Audio Gain range is -100.0 to 20.0 in 0.5 dB steps (m to mute)

Peak Audio Status **89.5 %** Adjust gain to see maximum value here hit approximately 70% - 95%

Source Digital Optical

PUBLIC ADDRESSThis channel will interrupt and override all others: Disabled ▾

		DEFAULTS	INFO
Force Override Always	<input type="checkbox"/>	unchecked	
Detection Speed	<input type="text" value="7"/> ▾	7	10 is fastest
Detection Threshold	<input type="text" value="25 %"/> ▾	25 %	Want this about 1/3 Peak Audio Status above
Hold Time	<input type="text" value="2.5"/> ▾	2.5	Seconds of additional interrupt time

© 2014 - 2016 AudioFetch

The PUBLIC ADDRESS section allows one channel to interrupt/override all other channels automatically when a signal is detected on the designated PA Interrupt channel. This allows announcements from a facility's PA system to be heard by everyone listening to AudioFetch with earphones so that important announcements are not missed.

To use the Public Address feature:

1. Connect a line-level microphone signal to one of the channel inputs – this will be called the “designated PA channel.”
 - a. The AudioFetch inputs are not directly compatible with microphones, do not plug a microphone directly into a channel input.
 - b. A line-level signal would normally be available as an output on an existing PA amplifier/system in a facility.
 - c. Alternately, a microphone preamp can be used together with a microphone to provide a line-level signal – contact AudioFetch support for recommendations.
2. Adjust the audio gain as previously described, for the designated PA channel
3. In the PUBLIC ADDRESS section, select the designated PA channel from the drop-down list
4. Use a mobile device (preferably with earphones), listen to a different channel on the AudioFetch system, one that has an active audio source (TV, music, etc.)
5. Adjust the Detection Speed, Detection Threshold, and Hold Time, until the automatic interrupt/override occurs as desired.
 - a. Experiment with different settings to become familiar with what they do
6. Click the Save Settings button to save the new settings

In certain applications the AudioFetch system might be used as a permanent PA system, in this case enable the Force Override Always checkbox (and then click Save Settings button) – this causes audio from the designated PA channel to be to always stream to all channels.

More about the Public Address settings:

The **Detection Speed** setting helps prevent accidental interrupts (random interruptions to the audio in all other channels) if the PA microphone picks up occasional noise, gets bumped, etc. A lower/slower setting means a longer period of sound from the microphone must be detected before an interrupt occurs – this helps prevent accidental interrupts but it also means there is a longer delay before the interrupt occurs after a person starts speaking into the PA microphone. If a lower setting is required for your situation, then personnel making announcements should be trained to preface their announcement with a word or two to stimulate the slower detection (example: “Announcement, announcement, the facility will be closing in 15 minutes....”).

The **Threshold** setting should be set to approximately 33% of the maximum Peak Audio Status seen when speaking into the microphone. It can then be adjusted up or down as desired to affect detection sensitivity (adjust up to reduce detection sensitivity, down to increase sensitivity). The Detection Speed and Threshold adjustments work together to set the overall detection sensitivity, so it's best to play with different combinations to achieve the best detection performance.

The **Hold Time** setting determines how long the microphone signal will continue interrupting (all other channels) after a person stops speaking. Adjust it higher to prevent the system from reverting back to normal audio on all channels when the announcer pauses between words.

To use the Public Address feature in a multi-box installation, the line-level microphone signal must be split and connected to a channel on each of AudioFetch boxes. Then the Doghouse in each box must be configured to enable the PA Interrupt feature as described above. It is recommended that the same settings for Detection Speed, Threshold, and Hold Time be used on all boxes.

The **SYSTEM STATUS** page shows basic information about the system and connected users (see example on next page). Not all information is refreshed automatically, click the "Refresh" button at the bottom of the page to update the display of latest status.

Click the "Reset Statistics" button to reset the general statistics in the upper area.

**NAVIGATION**

[Welcome Page](#) [Network Setup](#) [Multi-Box Setup](#) [Channels Setup](#) [Audio Settings](#) [System Status](#) [Tools & Utilities](#) [Contact & Links](#)

SYSTEM STATUS - STEREO

Serial Number: 1341657088
Main Firmware Revision: 2016-03-27
Installed Channels: 16
Enabled Channels: 16
Connected Users: 4
Max. Connected Users past 24 hours: 4
Max. Connected Users past 7 days: 4
Max. Connected Users past 30 days: 4
Max. Connected Users ever: 4

[Reset Statistics](#)

Connected Users per channel

Ch 13: 0	Ch 14: 1	Ch 15: 0	Ch 16: 0
Ch 9: 0	Ch 10: 0	Ch 11: 0	Ch 12: 0
Ch 5: 0	Ch 6: 0	Ch 7: 1	Ch 8: 0
Ch 1: 2	Ch 2: 0	Ch 3: 0	Ch 4: 0

[Click table for user details](#)

[Refresh](#)

[Link to AudioFetch reporting portal online](#)

© 2014 - 2016 AudioFetch

Click anywhere in the “Connected Users per channel” area and a detailed list of currently connected users is displayed with various sorting options provided by the drop-down selector:



CONNECTED USER LIST

Sort-IP

No. 1	IP = 192.168.0.129	Ch. = 1	Time =	00:23:21
No. 2	IP = 192.168.0.112	Ch. = 14	Time =	00:27:04
No. 3	IP = 192.168.0.50	Ch. = 1	Time =	00:27:19
No. 4	IP = 192.168.0.71	Ch. = 7	Time =	00:27:43

[Return to System Status Menu](#)

© 2014 - 2016 AudioFetch

AudioFetch provides additional monitoring statistics online, click the link at the bottom of the page to access the login page for the online reporting service. Contact AudioFetch support if you have lost or forgotten your online login credentials.

The **TOOLS AND UTILITIES** page provides means to change the Doghouse username/password and options for how firmware updates are delivered to the AudioFetch box.

To change username/password, enter the current credentials into the first two boxes, then enter the new username/password into the last two boxes and click the “Modify Name/Password” button.



NAVIGATION

[Welcome Page](#) [Network Setup](#) [Multi-Box Setup](#) [Channels Setup](#) [Audio Settings](#) [System Status](#) [Tools & Utilities](#) [Contact & Links](#)

TOOLS AND UTILITIES

All entries 7 char max.

Name

Password

New Name

New Password

Installed Firmware: 2016-03-27

Enable Online Automatic Firmware Updates

Local Update - disable Automatic Updates checkbox and browse for update file

No file selected.

© 2014 - 2016 AudioFetch

There is a checkbox to enable/disable Online Automatic Firmware Updates, which are provided from time to time by AudioFetch (the box must be connected to a network with Internet access). Default setting is enabled, AudioFetch recommends this be left enabled. AudioFetch system firmware updates are rare and generally occur late at night. The AudioFetch box checks for an available update once just after power-on and then once every 5 hours thereafter.

If desired, the “Check now for online update” button may be clicked. A confirmation will pop up, click the “OK” button to proceed. There is no subsequent display about an update being available or starting, but if an update is available then it will begin automatically and the download progress is indicated by the yellow LED on the AudioFetch box flashing (during

download). After the download completes, AudioFetch will reset itself, execute the update (yellow LED will turn on again during update), then reboot. Completing all of this typically takes about 5-15 seconds.

New firmware may be manually uploaded to AudioFetch if needed (see buttons near the bottom of the page) but this would be an extremely rare occurrence and should be accomplished while in communication with AudioFetch tech support on a case-by-case basis.

Clicking the “Restore Factory Settings” button clears most AudioFetch Doghouse settings, restoring to factory default values. The Audio Gain settings for each channel will not be changed. AudioFetch will reboot after clicking this button. After performing a factory restore, Doghouse settings should be reviewed and adjusted as necessary (don’t forget that the username/password will be reset back to default ADMIN/admin as well).

The **CONTACT & LINKS** page contains contact information in case support is required, as well as a link to the online portal.



NAVIGATION

[Welcome Page](#) [Network Setup](#) [Multi-Box Setup](#) [Channels Setup](#) [Audio Settings](#) [System Status](#) [Tools & Utilities](#) [Contact & Links](#)

CONTACT & AD PORTAL

844.443.3824

support@audiofetch.com

[Link to AudioFetch reporting and ads portal online](#)

9. Regulatory Compliance Statements

This device complies with Part 15 of the FCC Rules. Operation is subject to the following two conditions: (1) this device may not cause harmful interference, and (2) this device must accept any interference received, including interference that may cause undesired operation.

This product meets the applicable Industry Canada technical specifications.