

# Celerity Detachable Fiber Optic Connectors

ct•fiber optic hdmi  
detachable connector

ct•fiber optic hdmi  
detachable keystone connector

ct•fiber optic dvi  
detachable connector

## 2 steps to fiber optic HDMI DVI

### Step 1: Pre-wiring the fiber optic cables

Celerity Fiber Optic cables are directional and must be installed correctly. Ensure that the fiber optic plug marked T is located at the source location. Ensure that the fiber optic plug marked R is located at the display.

### Step 2: Attaching the Detachable Fiber Optic (DFO) connector or DFO Keystone connector

Attach the DFO connector or DFO Keystone connector marked T to the fiber optic plug marked T. Connect to the source component. Attach the DFO connector or DFO Keystone connector marked R to the fiber optic plug marked R. Connect to the display component.

#### USB Power at the Display location (DFO-HDMI & DFO-DVI) Required

The DFO connector marked R also includes a USB cable to provide power for the R connector. Connect the USB cable to an available USB port on the display. If there is no convenient USB port available then alternatively a USB-AC adapter (5V/1000mA, not supplied) may be used instead.

#### USB Power at the Source location (DFO-HDMI & DFO-DVI) Only if needed

The DFO connector marked T also includes a USB cable to provide power for the T connector when power is not provided by the Source component. If the blue LED on the DFO connector illuminates without the USB cable connected to power, the USB cable may remain unconnected.

#### USB Power at the Display location (DFO-KEY) Required

For DFO Keystone wall plate, connect the R Keystone wall plate to the Display with the Celerity HDMI+5V USB Power cable, connecting the HDMI to the display and the USB to an available USB port on the display or a USB-AC adapter. The Celerity HDMI+5VUSB cable is a required separate item available as CTK-03-5V (3ft) or CTK-06-5V (6ft).

#### LED Display Indicators (DFO-HDMI & DFO-DVI only)

Ensure that the blue LEDs on the end of the DFO connectors are illuminated when the source and display are powered.

All Celerity Fiber Optic Cables are plenum (OFNP) rated.

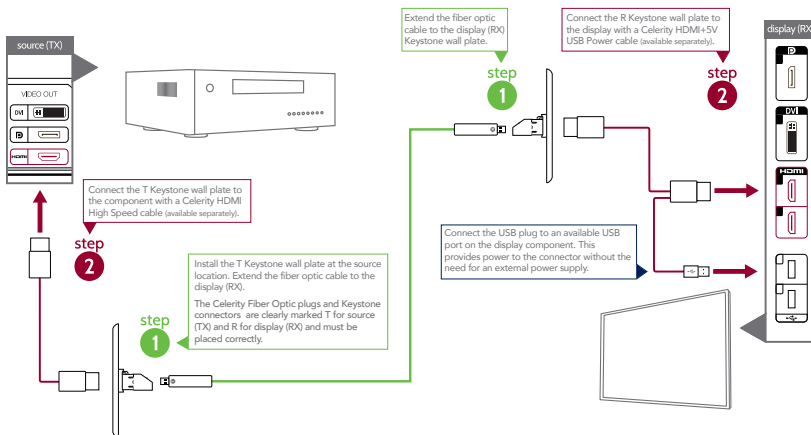
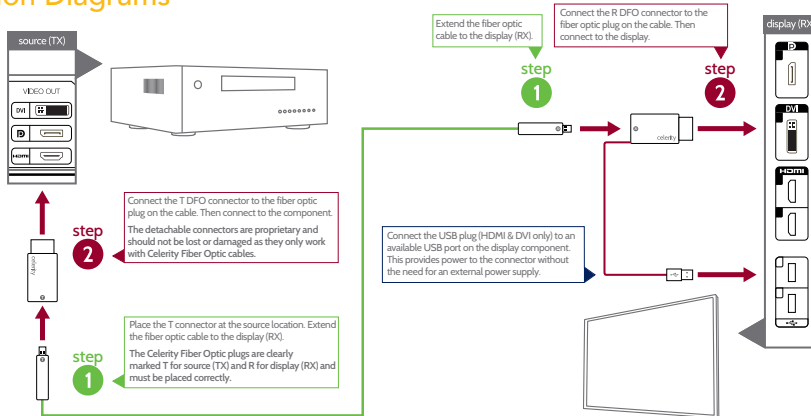
#### Support

For further assistance, contact [support@celeritytek.com](mailto:support@celeritytek.com) or call 949.453.9988 from 9:00a until 5:30p Pacific Time.

Connection diagram on reverse



## Connection Diagrams



### Limited Warranty

Celerity Technologies warrants this product against defects in material or workmanship for a period of 12 months from the original date of purchase. Celerity Technologies will, at its sole option, (i) repair the product using new or refurbished parts, or (ii) replace the product with a new or refurbished product. For purposes of this Limited Warranty, "refurbished" means a product or part that has been returned to its original specifications. IN THE EVENT OF A DEFECT, THESE ARE YOUR EXCLUSIVE REMEDIES.

To obtain warranty service, you must deliver the product, postage prepaid, in accordance with instructions at Celerity Technologies' website: <http://www.celeritytek.com>. This Limited Warranty only covers product issues caused by defects in material or workmanship during proper consumer or commercial use. It does not cover product issues caused by any other reason, including but not limited to improper consumer or commercial use, acts of God, misuse, limitations of technology, or modification of or to the product.

### LIMITATION ON DAMAGES

ALL IMPLIED WARRANTIES, INCLUDING IMPLIED WARRANTIES OF MERCHANTABILITY OR FITNESS FOR A PARTICULAR PURPOSE, ARE EXPRESSLY LIMITED TO THE PERIOD OF ONE (1) YEAR FROM THE DATE OF PURCHASE. TO THE EXTENT NOT PROHIBITED BY APPLICABLE LAW, CELERITY TECHNOLOGIES SHALL NOT BE LIABLE FOR ANY INCIDENTAL, SPECIAL, INDIRECT, OR CONSEQUENTIAL DAMAGES WHATSOEVER, INCLUDING, WITHOUT LIMITATION, DAMAGES FOR LOSS OF PROFITS, CORRUPTION OR LOSS OF DATA, FAILURE TO TRANSMIT OR RECEIVE ANY DATA, BUSINESS INTERRUPTION OR ANY OTHER COMMERCIAL DAMAGES OR LOSSES ARISING OUT OF OR RELATED TO YOUR USE OF THE CELERITY TECHNOLOGIES PRODUCT.

Some state or jurisdictions do not allow the exclusion or limitation of incidental or consequential damages, or allow limitations on how long an implied warranty lasts, so the above limitations or exclusions may not apply to you. This Limited Warranty gives you specific legal rights and you may have other rights which vary from state to state or jurisdiction to jurisdiction. Please register this product at <http://celeritytek.com/warranty>. Retain your sales receipt for proof of date of purchase.

### FCC Warning

This device complies with Part 15 of the FCC Rules. Operation is subject to the following two conditions: (1) this device may not cause harmful interference and (2) this device must accept any interference received, including interference that may cause undesired operation.

15.21 Caution: The user is cautioned that changes or modifications not expressly approved by the party responsible for compliance could void the user's authority to operate the equipment.

### 15.105 - Class B digital device or peripheral

For a Class B digital device or peripheral, the instructions furnished the user shall include the following or similar statement, placed in a prominent location in the text of the manual:

Note: This equipment has been tested and found to comply with the limits for a Class B digital device, pursuant to part 15 of the FCC Rules. These limits are designed to provide reasonable protection against harmful interference in a residential installation. This equipment generates, uses and can radiate radio frequency energy and, if not installed and used in accordance with the instructions, may cause harmful interference to radio communications. However, there is no guarantee that interference will not occur in a particular installation. If this equipment does cause harmful interference to radio or television reception, which can be determined by turning the equipment off and on, the user is encouraged to try to correct the interference by one or more of the following measures:

- Reorient or relocate the receiving antenna.
- Increase the separation between the equipment and receiver.
- Connect the equipment into an outlet on a circuit different from that to which the receiver is connected.
- Consult the dealer or an experienced radio/TV technician for help.