



G-Technology®

USER MANUAL

**G|DRIVE®** mobile   
with Thunderbolt™

**Portable Thunderbolt and USB 3.0 Drive**



[g-technology.com](http://g-technology.com)

## **Table of Contents**

### **Safety & General Use**

Safety Precautions.....	4
Backup Your Data .....	5

### **About Your G-DRIVE mobile**

Introduction .....	7
What's in the Box .....	8
System Requirements .....	8
Overview of the Drive .....	9
Easy Installation for Mac <sup>®</sup> .....	9
Disconnect the Drive .....	10

### **Using Your Drive with Mac OS<sup>®</sup>**

Use with Time Machine <sup>®</sup> .....	12
Initialize Drive for Mac .....	14
Restore the Drive Icon .....	17
Reformat with Partitions.....	19

### **Using Your Drive on Windows<sup>®</sup>**

Windows Use.....	24
Cross Platform Use .....	25

### **Support & Warranty**

Technical Support .....	29
Limited Warranty .....	30
Copyright.....	32



## Safety & General Use

- Safety Precautions ..... p.4
- Backup Your Data ..... p.5



G-Technology®

## Safety Precautions

The warranty on G-DRIVE® mobile with Thunderbolt™ may be void as a result of the failure to respect the precautions listed here. If you detect a problem with your drive, please contact our [Technical Support department](#).

*If the product is returned with damage caused by improper handling, the warranty will be void and liability will rest with the user. Please read our [Limited Warranty](#).*

- **Servicing:** Your drive contains no user-serviceable parts. If it appears to be malfunctioning, have it inspected by a qualified Technical Support representative.
- **Moisture:** Place the device away from moisture or liquids. To reduce the risk of damage, do not expose this drive to rain or moisture. Do not use it in damp or wet conditions. Never place objects containing liquids on the drive as they may spill into its openings.
- **Ventilation:** Place the device in a vented area. The drive should never be placed near or over a radiator or heat source.
- **Temperature:** Do not expose this drive to temperatures outside the range of 5°C to 35°C (41°F to 95°F); or to operational humidity beyond 5%-80%, non-condensing, or non-operating humidity beyond 10%-90%, non-condensing. Avoid placing your drive near a source of heat, or exposing it to sunlight (even through a window), or in an environment that is too cold or humid.
- **Physical Damage:** Do not place heavy objects on the drive. Never use excessive force on your drive.

## **Backup Your Data**

The disk drive contained in your G-DRIVE mobile with Thunderbolt device is a delicate electronic instrument and is susceptible to damage due to excessive physical shock. Under no circumstances will G-Technology® be held liable for the recovery or restoration of lost data. Any loss, corruption or destruction of data while using a G-Technology drive is the sole responsibility of the user.

### **Make two backups**

To help prevent the loss of your data, we highly recommend that you keep TWO copies of your data in separate storage locations. Keep one copy on your G-Technology drive. Keep a second copy on your internal hard drive, another G-Technology drive, or a form of removable storage media.



## About Your G-DRIVE mobile with Thunderbolt

· Introduction .....	p.7
· What's in the Box .....	p.8
· System Requirements .....	p.8
· Overview of the Drive .....	p.9
· Easy Installation for Mac .....	p.9
· Disconnect the Drive .....	p.10



G-Technology®

## Introduction

Thank you for purchasing G-DRIVE mobile with Thunderbolt from G-Technology. It's the ultra-stylish portable storage solution for laptop users, featuring ultra-fast Thunderbolt and USB 3.0 interfaces.

The ideal—and indispensable—compliment to your Mac® laptop and other portable computers, G-DRIVE mobile with Thunderbolt combines 1TB capacity and a 7200RPM hard drive, together with Time Machine compatibility for quick back-ups of documents, music, video and photos. Weighing in at less than 9 oz., the drive has a high-quality, heavy-duty feel that belies its sleek design.



Right out of the box, G-DRIVE mobile with Thunderbolt works with Time Machine® to automatically back up all the files on your MacBook Pro®! You can also use the drive with a Windows® computer or work cross-platform. [See how here.](#)

The drive features a silent, fan-less design with an integrated cooling system to ensure reliable operation and long life. And it's bus-powered, so you don't have to carry around an external AC power supply to use the drive. Portability has never been so easy—and lightning fast!

## What's in the Box

The following items are included in the box—if any items are missing, please contact G-Technology at [g-technology.com/support](http://g-technology.com/support).

- G-DRIVE mobile with Thunderbolt
- (1) Thunderbolt cable
- (1) USB 3.0 cable (2.0 compatible)
- Quick Start Guide



## System Requirements

The drive is set up at the factory for use with Mac OS® systems, formatted as 'HFS+ with Journaling', and supports the following Operating Systems:

**Mac:** Mac OS 10.7+.

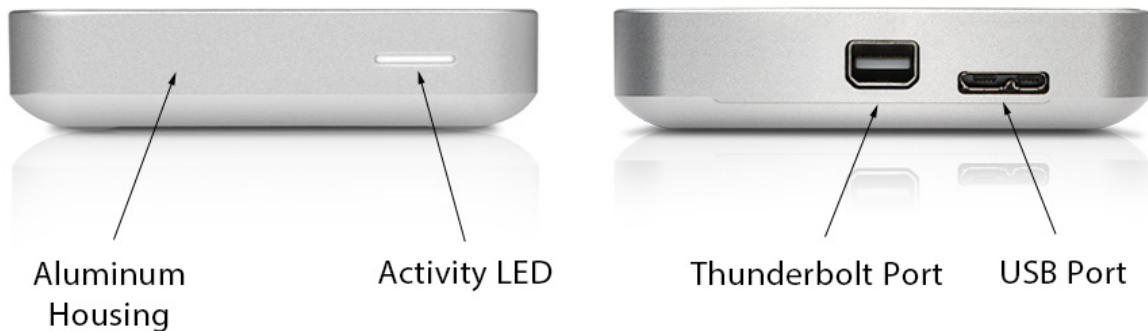
**Windows:** Windows® 8, 7 and Vista.

[See how to format for Windows here.](#)



## Overview of the Drive

Your G-DRIVE mobile with Thunderbolt is designed for ultimate simplicity. The Power & Activity LED on the front of the unit will glow when power is applied via the Thunderbolt or USB port. The light will flash more brightly as data is transferred to or from the hard drive. One Thunderbolt and one USB port are located on the rear panel of the drive's aluminum housing.



## Easy Installation for Mac

G-DRIVE mobile with Thunderbolt easily attaches to your computer via the USB or Thunderbolt port. Simply use one of the included cables to connect the drive to the appropriate port on your computer. For best performance, we recommend using the Thunderbolt connection when available. The drive will automatically mount on the desktop if you are running Mac OS.

No AC power supply is necessary. The drive is bus-powered to eliminate the need to carry around an external AC power supply to use the drive.

## Disconnecting the Drive

A great feature of G-DRIVE mobile with Thunderbolt is its ability to be connected and disconnected while your computer is running. However, to prevent failures and/or data loss, it is important to follow the steps below when disconnecting or 'unmounting' the drive from your computer.

1. Before disconnecting the drive, unmount the system by simply dragging the G-DRIVE mobile with Thunderbolt icon to the trash located in the dock.  
**Keyboard shortcut:** Select the drive icon and hit Command+E.
2. It is safe to remove the drive from your system when the drive icon is no longer present on your desktop.

## Helpful links

- To use your drive on Windows systems, go to [Windows Use](#).
- To use your drive on Mac and Windows, go to [Cross Platform Use](#).



## Using Your Drive with Mac OS

- Use with Time Machine ..... p.12
- Initialize Drive for Mac ..... p.14
- Restore the Drive Icon ..... p.17
- Reformat with Partitions ..... p.19

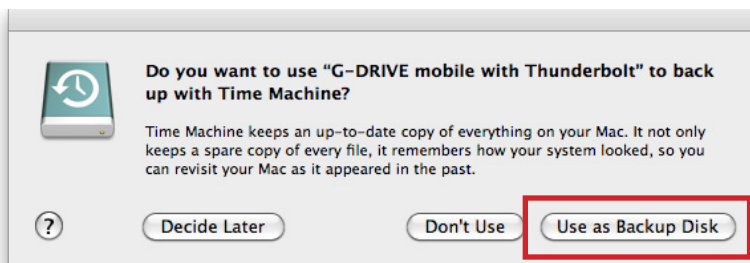


G-Technology®

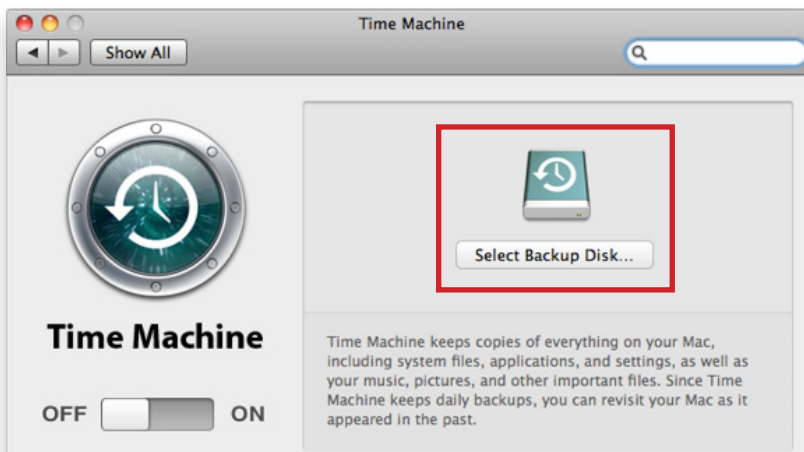
## Use with Time Machine

G-DRIVE mobile with Thunderbolt works seamlessly with Time Machine, the easy-to-use application that ships with your Mac and provides automatic backup for your files. The following steps will quickly set up your drive for use with Time Machine.

1. When you connect your drive for the first time, the Time Machine dialog box should automatically appear. Click the 'Use as Backup Disk' button.



2. If the Time Machine dialog box did not launch, go to the Apple<sup>®</sup> Menu and select System Preferences. Click on the Time Machine icon, and the Time Machine Preferences panel will open. Click the 'Select Backup Disk' button.



3. In the dialog box that appears, select your G-DRIVE mobile with Thunderbolt, then click the Use for Backup button.
4. Make sure the Time Machine switch is set to ON, then click the Options button to choose volumes, folders or files you do NOT want to backup.

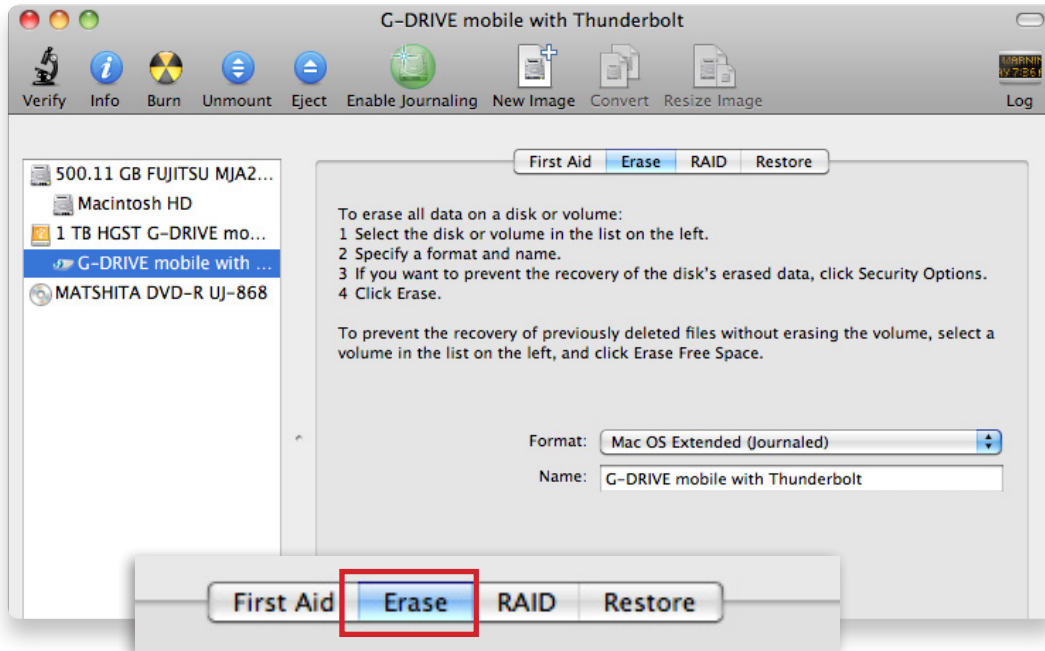


G-DRIVE mobile with Thunderbolt will now use Time Machine to back up your important files automatically. It's that easy!

## Initialize Drive for Mac

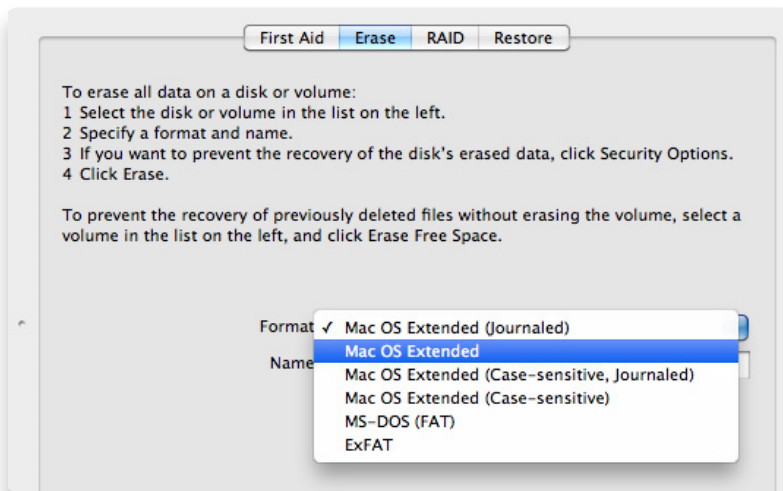
G-DRIVE mobile with Thunderbolt has been factory-formatted, or 'initialized', for use with Mac OS. Should you wish to reinitialize the drive—and quickly erase all contents of the drive—here are the steps:

1. First, open the Disk Utility program, located on your hard drive under Applications/Utilities/Disk Utility. The window below will appear, and your G-DRIVE mobile with Thunderbolt will be displayed in the left-hand column.
2. Select your drive by clicking its icon in the left-side column. Information about the drive will be displayed at the bottom of the window.
3. Select the Erase tab to view the formatting options. By default, the Format pop-up menu is set to the Mac OS Extended (Journaled) option.

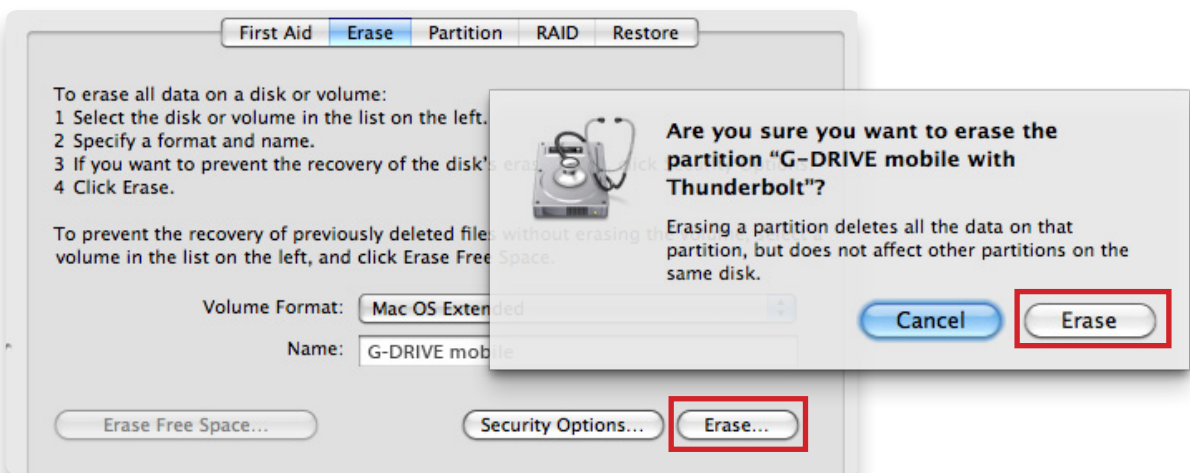


4. Click the Format pop-up and choose the Format option that you prefer:

- Mac OS Extended (Journaled): Select this format if you intend to use the drive for Time Machine or to create a separate, bootable installation of the OS.
- Mac OS Extended: Use this format for best performance and media storage.



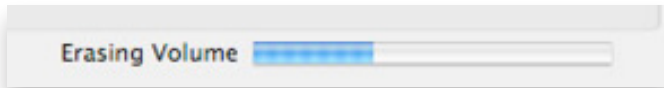
5. Click the Erase button in the lower right corner of the window. A dialog box will appear asking if you want to erase the G-DRIVE mobile with Thunderbolt partition.



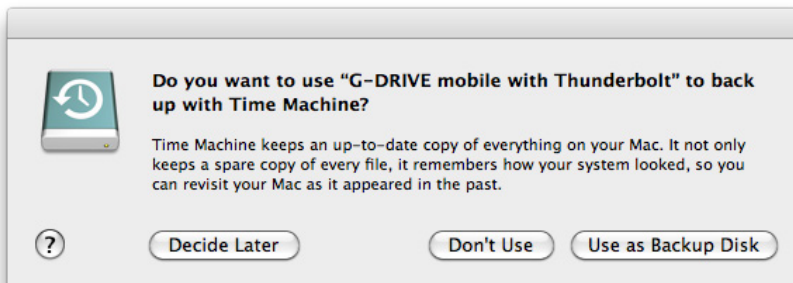


**WARNING: THIS NEXT STEP WILL ERASE ALL DATA ON YOUR DRIVE.**

6. Click on the Erase button to continue. A progress bar in the lower right corner of the window will show the progress of the disk's reformatting.



7. After the drive is reinitialized, you should automatically see the Time Machine dialog box.
- Click the 'Use as Backup Disk' button if you want to use the drive with Time Machine. For more about using the drive with Time Machine, [go here](#).
  - Click the 'Don't Use' or 'Decide Later' button if you do not want to use Time Machine at this point.



8. Quit the Disk Utility program. After reinitializing the drive, the custom icon for G-DRIVE mobile with Thunderbolt has been erased. You can optionally restore this icon by following the steps on the [next page](#).

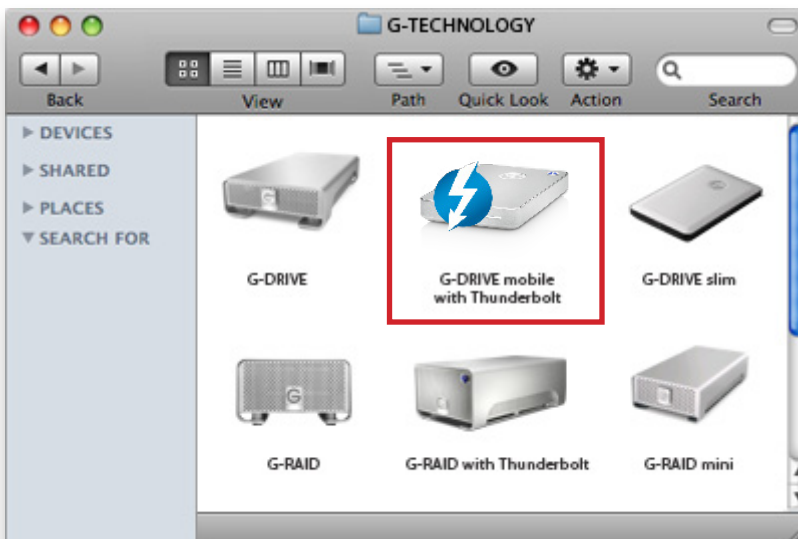


## Restore the Drive Icon

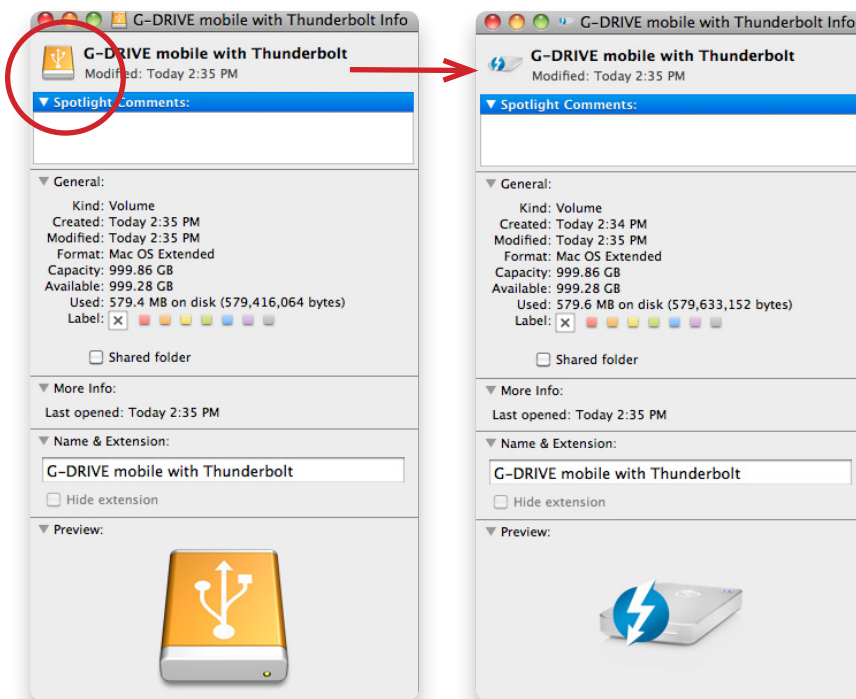
If the drive icon for your G-DRIVE mobile with Thunderbolt was erased during the reinitialization process (see [previous section](#)), you can restore the icon by following these easy steps:

**NOTE:** This process is not required for the operation of G-DRIVE mobile with Thunderbolt. However, it will make your drive's appearance on the computer desktop look cleaner and more accurate.

1. To get the G-Technology Icon package, go to [g-technology.com/support](http://g-technology.com/support) and navigate to your product. There will be a link to download the icons.
2. Once downloaded, it should automatically open the G-Technology Icons folder as shown below. If not, double-click the Zip file to open. Next, double-click the DMG file to open the G-Technology Icons package.
3. Click to select the drive icon for G-DRIVE mobile with Thunderbolt in the package window. Press Command+C to copy the icon. (*below*)



4. Select the icon for G-DRIVE mobile with Thunderbolt on your desktop and press Command+I. This opens its Get Info window. *(below left)*
5. Select the default icon in the Get Info window. *(below left)*
6. Press Command+V to paste the custom G-DRIVE mobile with Thunderbolt icon into the Get Info window. *(below right)*



The icon for your G-DRIVE mobile with Thunderbolt has been restored and you can close the Get Info window. Your drive is now fully ready for use!

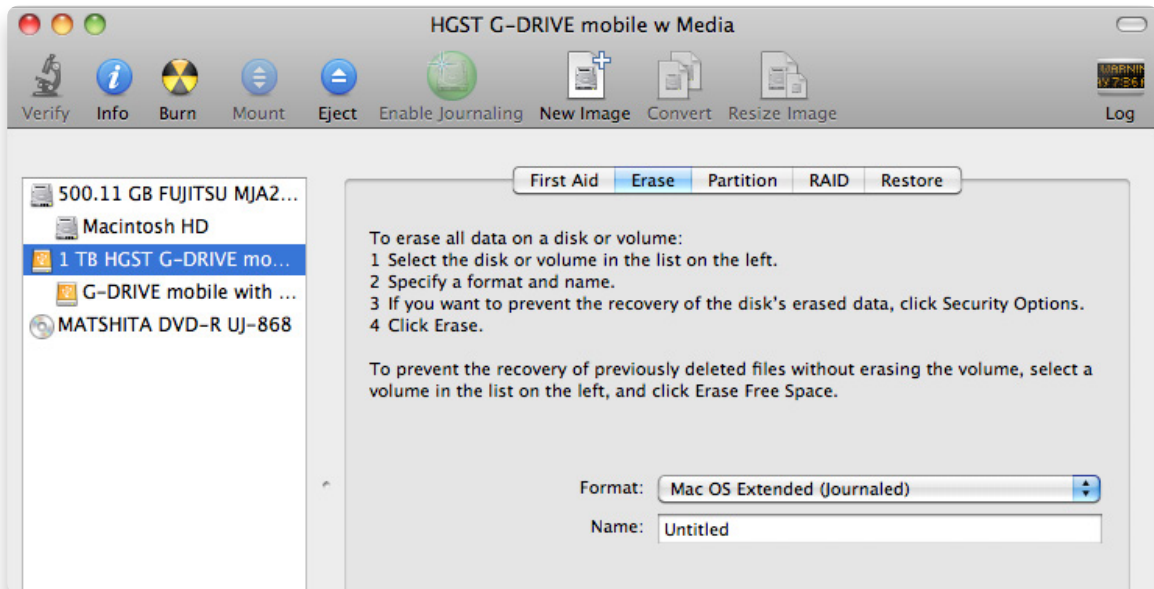
## Reformat with Partitions

‘Partitioning’ a hard drive is the process of dividing a hard drive into separate, discrete sections called ‘volumes’. Each volume works like a separate disk. You can create up to 16 different partitions on a hard drive in the OS and each partition can be a different size and format.

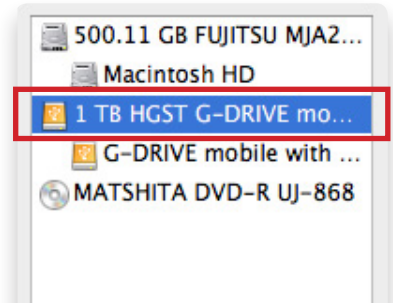
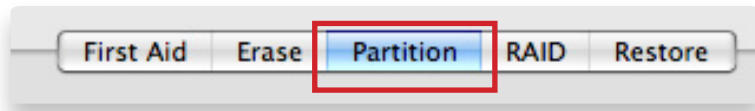
With hard drives getting bigger, it can be useful to partition your hard drive to use sections of its space for different purposes. For instance, you can segment user data from backup data, set up a multi-boot environment with different operating systems or create a dedicated capture scratch disk for programs like Final Cut Pro<sup>®</sup> and Adobe Premiere<sup>®</sup>.

The following steps will guide you through the simple process of partitioning your drive.

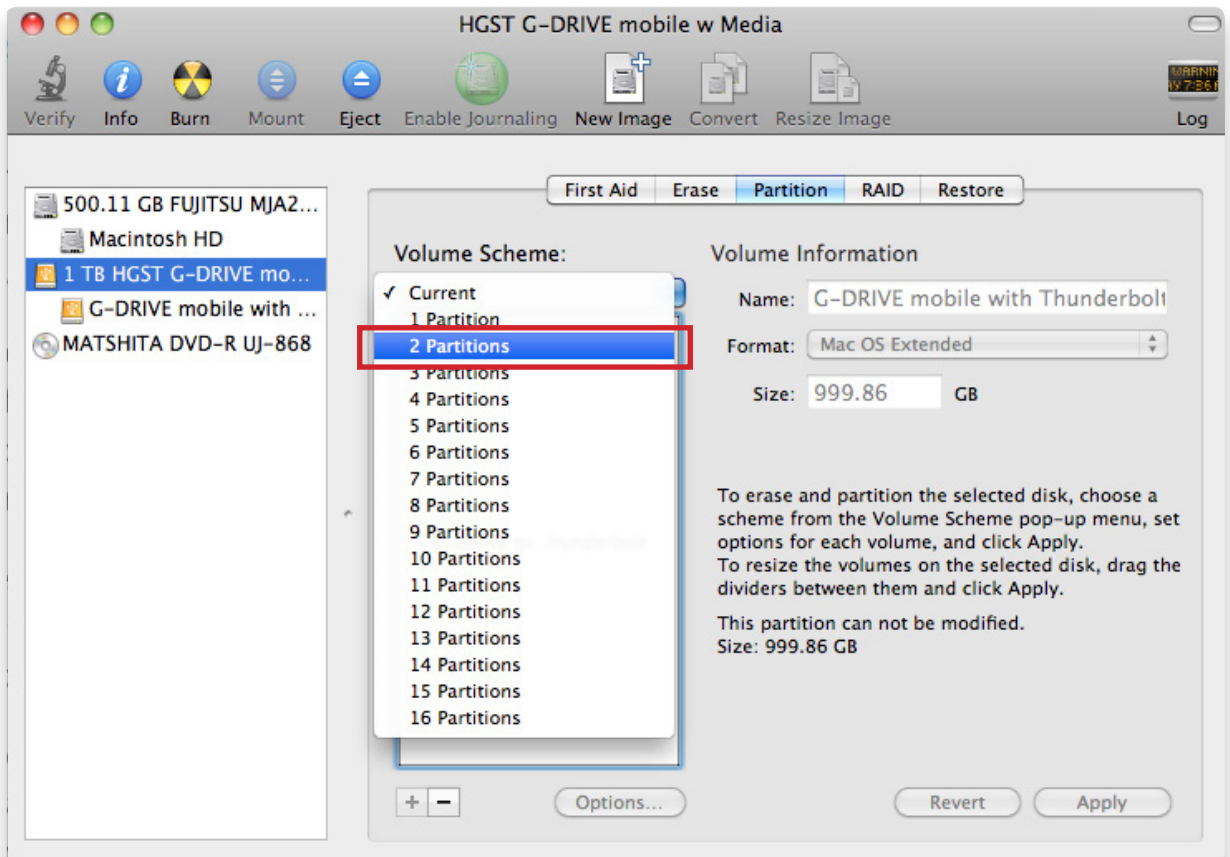
1. First, open the Disk Utility program, located on your hard drive under Applications/Utilities/Disk Utility. The window below will appear. Your G-Technology drive will be displayed in the left-hand column.



2. Select the Thunderbolt or USB icon—not the G-Technology drive icon—by clicking it in the left-side column.
3. Click on the Partition button in the main window.

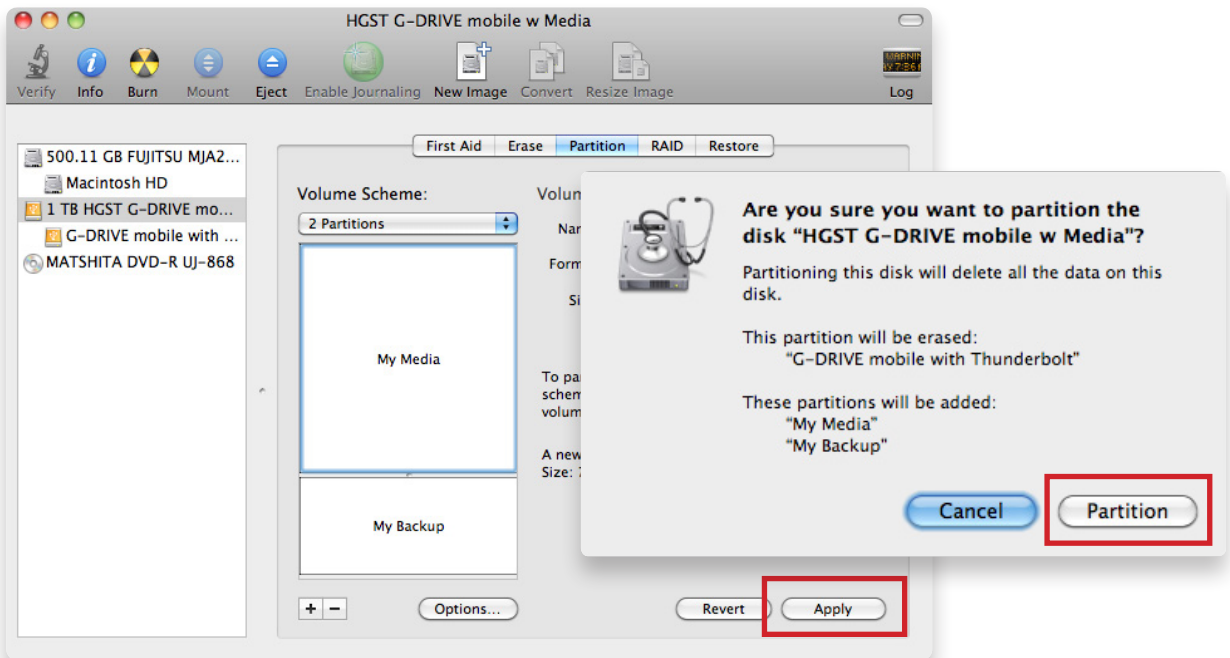


4. Select the number of partitions you would like from the Volume Scheme menu. Below, we have selected '2 Partitions' to create two partitions.

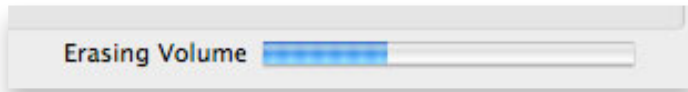


5. Click on the first partition in the Volume Scheme area. Your partition will be highlighted by a blue bounding box.
  - In the Name field, type a name for the partition.
  - From the Format menu, choose your desired disk format. If you will use your drive primarily on Mac OS, it is recommended to use Mac OS Extended or Mac OS Extended (Journaled). For info about formats, [go here](#).
  - In the Size field, type in a size for the partition. Alternately, you can drag the bar in between each partition to quickly change the size.
6. Repeat this process for each partition you have created.
7. Click the Apply button in the lower right corner of the window. A dialog box will appear asking if you want to erase the G-Technology drive partition.

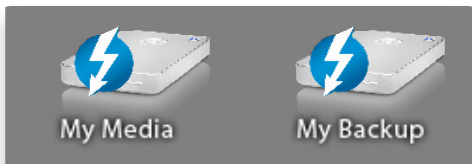
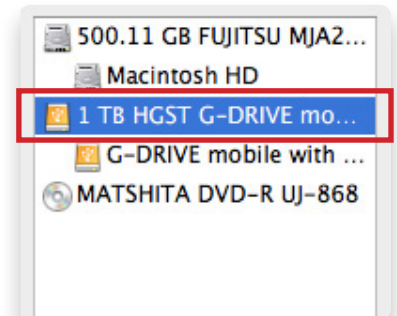
**WARNING: THIS NEXT STEP WILL ERASE ALL DATA ON YOUR DRIVE.**



8. Click on the Partition button to continue. A progress bar in the lower right corner of the window will display your disk's reformatting progress.



9. When partitioning is complete, the multiple partitions will be displayed in the left-hand panel of Disk Utility.
10. Quit the Disk Utility program. After reinitializing the drive, the custom icon for the G-Technology drive has been erased. You can optionally restore this icon to each partition with the steps on [this page](#).
11. The multiple partitions of the G-Technology drive will be displayed on the desktop. Your drive is now setup with two or more partitions and ready for use.





## Using Your Drive on Windows®

- Windows Use ..... p.24
- Cross Platform Use ..... p.25



G-Technology®



## Windows Use

Although G-DRIVE mobile with Thunderbolt has been set up at the factory for use with Mac OS systems, a simple initialization will prepare your drive for use with Windows 7 and Vista systems.

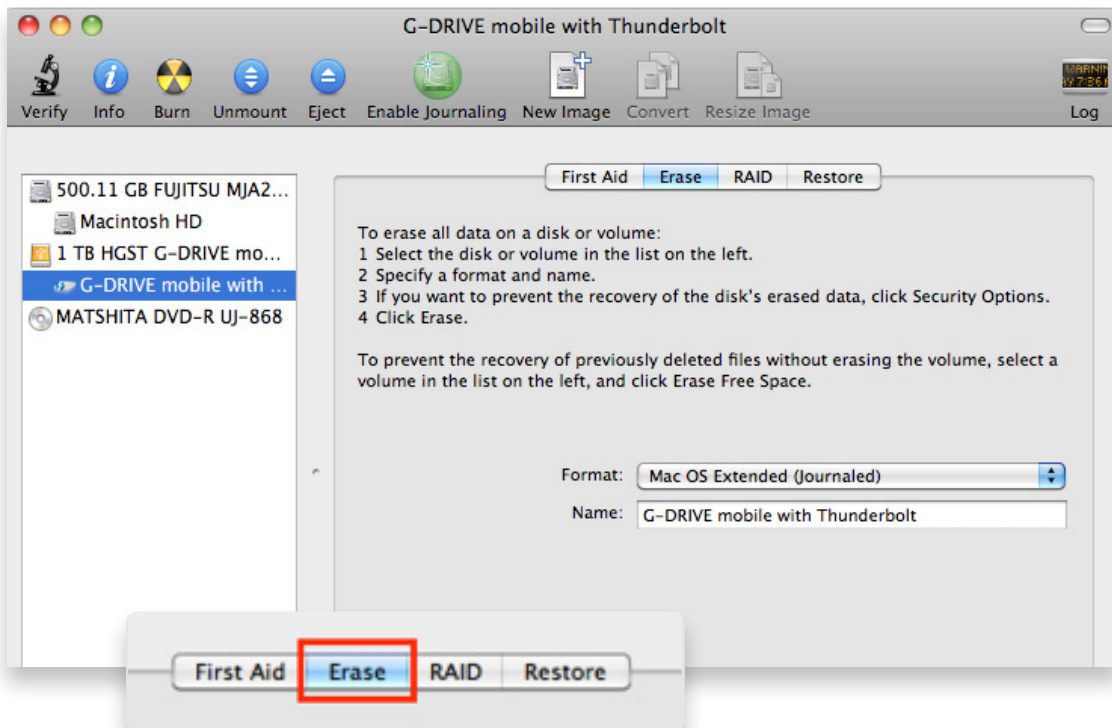
For helpful information on configuring and using your drive with Windows, please visit [g-technology.com/support](http://g-technology.com/support).



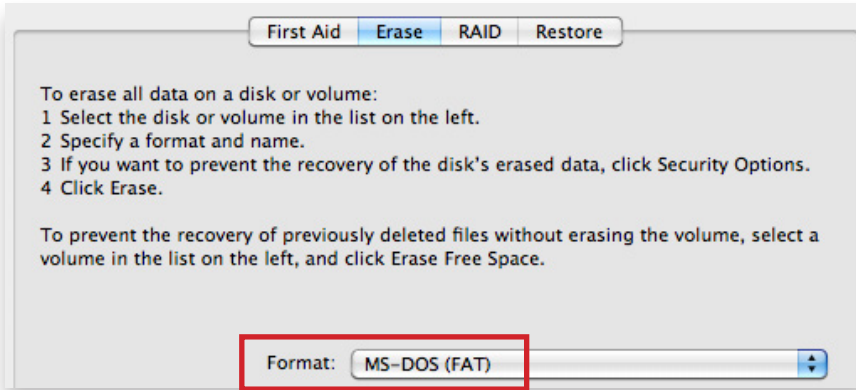
## Cross Platform Use

You can set up G-DRIVE mobile with Thunderbolt for use on both Windows and Mac systems by formatting the drive as 'Fat32'. To do this, use the Disk Utility application and format the drive to MS-DOS<sup>®</sup> (Fat), also known as Fat32.

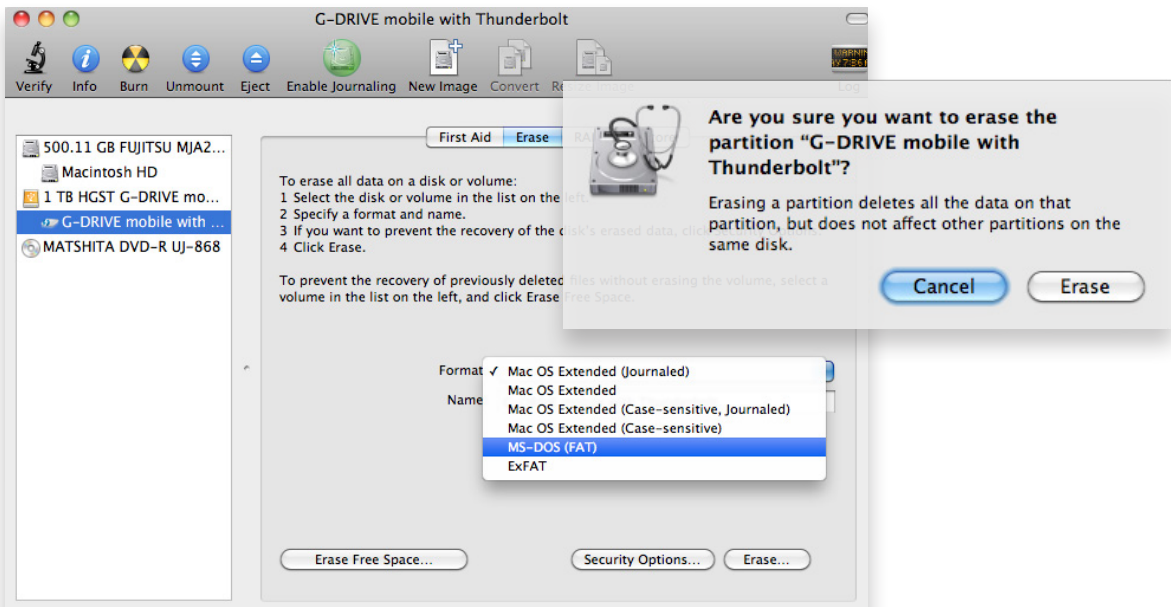
1. First, open the Disk Utility program. This application is located on your hard drive under Applications/Utilities/Disk Utility. The window below will appear. Your G-DRIVE mobile with Thunderbolt will be displayed in the left-hand column.
2. Select the G-DRIVE mobile with Thunderbolt by clicking its drive icon in the left-side column. Drive information will be displayed at the bottom of the window.
3. Select the Erase tab to view the formatting options. By default, the Format pop-up menu is set to the Mac OS Extended (Journaled) option.



4. Select 'MS-DOS® File System' from the Format pop-up menu. This will format the drive to Fat32. NOTE: You may need to rename the drive because Fat32 does not support more than 11 letters in the drive name.

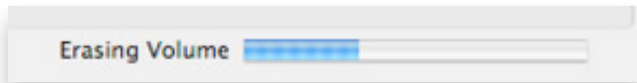


5. Click the 'Erase' button in the lower right corner of the window. A dialog box will appear asking if you want to erase the G-DRIVE mobile with Thunderbolt partition.



**WARNING: THIS NEXT STEP WILL ERASE ALL DATA ON YOUR DRIVE.**

6. Click the Erase button. A progress bar in the lower right corner of the window will show the progress of the disk reformatting, and your drive will be formatted to its full capacity as Fat32.



7. Quit the Disk Utility program. You are finished!
8. After reinitializing, the custom icon for the G-DRIVE mobile with Thunderbolt will be erased. No icons are available for Fat32.

With this format, you will be able to read/write on Windows Vista, 7 and 8, and on Mac OS machines with Thunderbolt port.

### Limitations with Fat32

There are some limitations when using Fat32.

The 'MS-DOS' File System' cannot write files over 4 GB. If you are working with files over 4 GB, you may want to choose a software option like MacDrive. MacDrive is Windows software that enables you to mount Mac-formatted drives on your Windows computer.

**NOTE:** You could format your drive on a Windows machine Fat32. However, Windows currently limits Fat32 partitions to only 32GB in size.



## Support & Warranty

• Technical Support .....	p.29
• Limited Warranty .....	p.30
• Copyright .....	p.32



G-Technology®

## Technical Support

Thank you again for purchasing G-DRIVE mobile with Thunderbolt—if you have any comments or questions about this manual or the product, please let us know!

At G-Technology, we appreciate and value our customers, and strive to give you the finest quality products, service and support. If you encounter any difficulties while installing or using G-DRIVE mobile with Thunderbolt, please contact G-Technology Technical Support at [www.g-technology.com/support](http://www.g-technology.com/support).

### Here's How to Make Your Support Contact Easier

When contacting Technical Support, it's best to be in front of your computer and have the following information available:

- Your G-DRIVE mobile with Thunderbolt serial number (on bottom of unit)
- Operating System and version
- Computer brand and model
- List of other devices attached to your computer

## Limited Warranty

HGST, a Western Digital Company ("HGST")  
Including G-Technology for External Hard Disk Drives

### What does this limited warranty cover?

This Limited Warranty applies to new HGST products purchased from an authorized HGST dealer by the original purchaser for normal use and not for resale. HGST warrants that a covered product is free from defects in materials and workmanship, with the exceptions stated below.

### How long does limited warranty coverage last?

This limited warranty lasts for 1 year, 2 years, 3 years or 5 years, or a fixed period from date of purchase, depending on when and where it was originally purchased. To determine the warranty specifically for your product, visit [g-technology.com](http://g-technology.com). A valid proof of purchase may be required to prove eligibility. If you do not have a valid proof of purchase, the limited warranty period will be measured from the date of sale from HGST to the authorized distributor.

### What does this limited warranty not cover?

The limited warranty does not cover damage resulting from commercial use, misuse, accident, modification or alteration to hardware or software, tampering, unsuitable physical or operating environment beyond product specifications, improper maintenance, or failure caused by a product for which HGST is not responsible.

There is no warranty of uninterrupted or error-free operation. There is no warranty for loss of data—you must regularly back up the data stored on your product to a separate storage product. There is no warranty for product with removed or altered identification labels.

HGST DOES NOT PROVIDE ANY OTHER WARRANTIES OF ANY KIND, INCLUDING, BUT NOT LIMITED TO, THE IMPLIED WARRANTIES OR CONDITIONS OF MERCHANTABILITY AND FITNESS FOR A PARTICULAR PURPOSE. SOME JURISDICTIONS DO NOT ALLOW THE LIMITATION OF IMPLIED WARRANTIES, SO THIS LIMITATION MAY NOT APPLY TO YOU. HGST is not responsible for returning to you product which is not covered by this limited warranty.

### **What must you do?**

If you are having trouble with a product, before seeking limited warranty service, first follow the troubleshooting procedures that HGST or your reseller provides.

To obtain limited warranty service, you must first obtain a Return Materials Authorization (RMA) and ship-to address by contacting G-Technology at [g-technology.com/support](https://g-technology.com/support). Please follow the instructions found on the website. You must return the covered hard disk drive using approved packaging to our logistics center. You must pay any associated transportation charges, duties and insurance in shipping the drive to our logistics center. You should remove all personal information from the product prior to its return.

### **What will HGST do?**

HGST will replace the drive with a functionally equivalent replacement product, transportation prepaid. HGST may replace your product with a product that was previously used, repaired and tested to meet HGST specifications. You receive title to the replaced product at delivery to carrier at HGST shipping point. You are responsible for importation of the replaced product, if applicable. HGST will not return the original drive to consumers; therefore, the consumer is responsible for moving data to another media before returning. Data Recovery is not covered under this warranty and is not part of the warranty returns process. HGST warrants that the replaced products are covered for the remainder of the original product warranty or 90 days, whichever is greater.

### **How is our liability limited?**

HGST AND ITS AFFILIATES, SUPPLIERS, DISTRIBUTORS, AND RESELLERS ARE NOT LIABLE FOR ANY OF THE FOLLOWING: 1) THIRD-PARTY CLAIMS AGAINST YOU FOR DAMAGES (OTHER THAN BODILY INJURY INCLUDING DEATH AND TANGIBLE PERSONAL PROPERTY; 2) LOSS OF, OR DAMAGE TO, YOUR DATA; OR 3) SPECIAL, INCIDENTAL, OR INDIRECT DAMAGES OR FOR ANY ECONOMIC CONSEQUENTIAL DAMAGES (INCLUDING LOST PROFITS OR SAVINGS), EVEN IF INFORMED OF THE POSSIBILITY. SOME JURISDICTIONS DO NOT ALLOW LIMITATION OF LIABILITY, INCIDENTAL DAMAGES, OR CONSEQUENTIAL DAMAGES, SO THE ABOVE LIMITATIONS MAY NOT APPLY TO YOU.

### **How do local laws apply?**

THIS LIMITED WARRANTY GIVES YOU SPECIFIC LEGAL RIGHTS, AND YOU MAY ALSO HAVE OTHER RIGHTS WHICH VARY FROM JURISDICTION TO JURISDICTION.

## **CAPACITY DEFINITION AND DISCLAIMER**

**For G-Technology products 1TB or greater:** “One gigabyte (GB) is equal to one billion bytes and one terabyte (TB) equals 1,000 GB (one trillion bytes). Accessible capacity will vary from the stated capacity due to formatting and partitioning of the hard drive, the computer’s operating system, and other factors”

**For G-Technology products less than 1TB:** “One gigabyte (GB) is equal to one billion bytes when referring to hard drive capacity. Accessible capacity will vary depending on the operating environment and formatting.”

## **Copyright**

One gigabyte (GB) is equal to one billion bytes when referring to hard drive capacity. Accessible capacity will vary depending on the operating environment and formatting.

Thunderbolt and the Thunderbolt logo are trademarks of Intel Corporation in the U.S. and/or other countries.

G-DRIVE and G-Technology are registered trademarks of G-Technology and its affiliates in the U.S. and other countries. Apple, Mac, Thunderbolt, MacBook Pro, Time Machine and the Mac logo are trademarks of Apple, Inc. Microsoft, Windows, Windows Vista and Windows XP are trademarks or registered trademarks of Microsoft Corporation in the US and/or other countries. Other trademarks are the property of their respective owners.

©2015 G-Technology, a Western Digital Corporation brand. All rights reserved. R4 10/15