

# TRAVELER QUEST

Wireless Portable Sound Systems

TQ8

## USER'S GUIDE



**ALL INCLUSIVE BATTERY  
OPERATED PORTABLE PA SYSTEM  
COMPACT, LIGHTWEIGHT, HIGH OUTPUT POWER &  
CLEAR SOUND.**



MAKERS OF THE ORIGINAL  
HOT SPOT PERSONAL MONITOR



This page is intentionally left blank



# Contents

<b>Introduction</b> .....	1
Before using the Traveler® Quest .....	2
TQ8 Series Description & Functions .....	2
TQ8 Front & Rear Panel Configuration, & Master Control Panel .....	3
TQ8 Master Control Panel & Operation of the TQ8 .....	4
TQMP3 - Built-in MP3 Player Module/Bluetooth® .....	5
TQRC - MP3 Remote Functions .....	6
<b>Traveler® Quest Series Optional Module</b> .....	6
TQREC - Wireless Single Mic Receiver .....	6
<b>Wireless Traveler® Quest Optional Transmitters</b> .....	7-10
TQHH Handheld Microphone Description & Functions .....	8
TQMBP Body Pack Transmitter Description & Functions .....	9
Troubleshooting Transmitters .....	10
Questions & Answers .....	10
Maintenance .....	10
<b>Traveler® Quest Accessories and Parts</b> .....	11-12
Optional Traveler® Quest Accessories .....	11
Traveler® Quest Replacement Parts .....	12
<b>Specifications</b> .....	13-15
TQ8 Specifications .....	13
TQREC Wireless Receiver Specifications .....	14
TQHH Handheld Microphone Specifications .....	15
TQMBP Body Pack Transmitter Specifications .....	15
<b>Traveler® Quest Battery Replacement Instructions</b> .....	16

## Introduction

### Operating Manual for Traveler® Quest Series

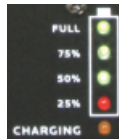
\*\*Please visit [www.galaxyaudio.com](http://www.galaxyaudio.com) for the latest updates\*\*

Thank you for purchasing the Traveler® Quest series wireless portable sound systems. These units feature an “all in one” design that allows them to be configured with a variety of different function modules to suit your specific needs. With rich, full sound and plenty of power, the Traveler® Quest series is ideally suited to cover large areas. This manual covers the complete functions and operations of the Traveler® Quest including all optional function modules. It also covers the TQHH Handheld & TQMBP Body Pack Transmitters. To use these systems to their fullest potential please read this manual carefully.

# Before Using the Traveler® Quest

## A. Before Using the Traveler® Quest

1. The TQ8 uses a universal DC switching power supply/charger that will operate on voltages of 100~240V, 50/60Hz. Verify that the voltage to which you are connecting is in this range and then connect the DC power cord from the Traveler to the wall outlet.
2. **Charge the battery for at least 8 hours with the Power Switch OFF prior to first time use** to maintain the quality of the battery and provide maximum operation time. When charging, the charging indicator lights RED. When charging is almost complete, the indicator will light at full status. After the battery is fully charged, the indicator will have lit up from 25%, to 50%, then to 75%. After the initial charge the Traveler® Quest may be operated on either DC or Battery power. When operating on DC power, the Traveler® Quest will simultaneously recharge its internal batteries.
3. These units have auto protection circuitry that will protect the battery from being overcharged or overused. When running on battery power and the red LED comes on, the battery power is down to 25%. When the battery is nearly exhausted, the system will turn off automatically to protect the battery.



### TQ8

#### CHARGING FUNCTIONS:

1. Charge indicator will light appropriately to the amount of the charge left. (25%, 50%, 75%, FULL)
2. Unit can be permanently left on charge.
3. For maximum battery life, recharge after every use and at least once every 3 months.
4. When in use and battery capacity is < 20% the power switch flashes red.

## B. Description of Functions for TQ8

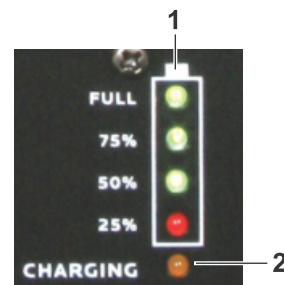
### A. Power Supply/Charging Input

1. Batteries (behind cover)
2. Battery Cover
3. Power On/Off Switch
4. DC Power Cable Connector



### B. Power LED and Charge Indicator for TQ8

1. Power Status LED Indicators
2. Charging Indicator



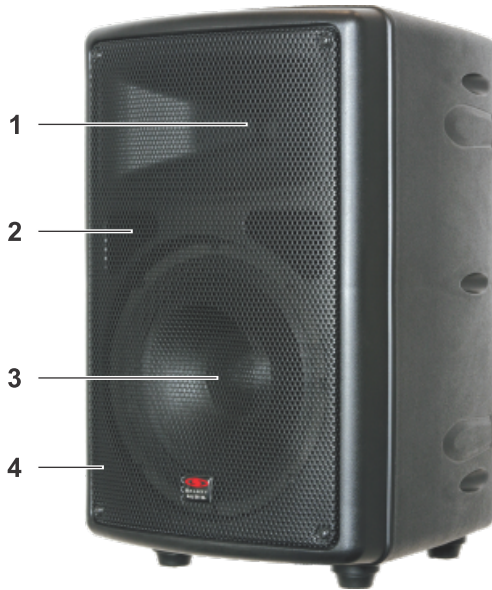


# TQ8 Front & Rear Panel Configuration & Master Control Panel

## C. TQ8 Front & Rear Panel Configuration

### TQ8 Series Rear Panel Configuration

TQ8-4000N (Part# for unit shown with options)



#### Front Side

1. 1" Horn Tweeter
2. Port
3. 8" Woofer
4. Speaker Grille

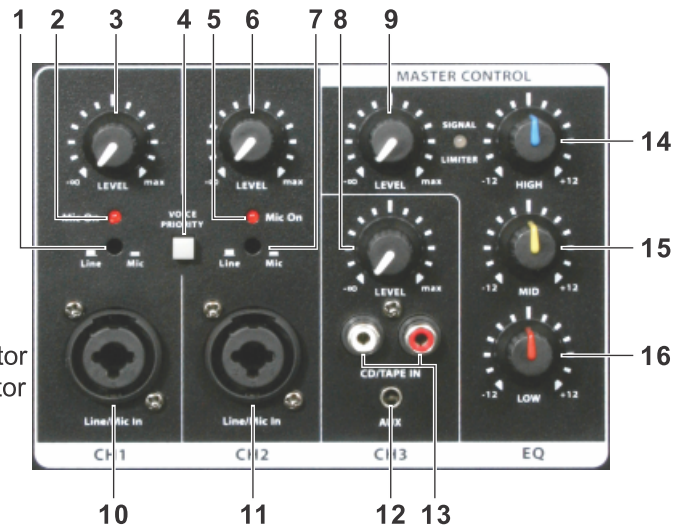


#### Rear Side

1. Integrated Handle
2. Built-in MP3 Player with Bluetooth®
3. TQREC Receiver Slots
4. Master Control Panel
5. Battery Cover
6. Main Power Switch and Charging Indicator
7. Fuse
8. DC Power Input

## D. TQ8 Master Control Panel

1. CH1 MIC/LINE Input Selector
2. CH1 Mic Level LED Indicator
3. CH1 Volume Control
4. VOICE PRIORITY: Button to activate or end the microphone priority function, the LED lights red when the voice priority function is active.
5. CH2 Mic Level LED Indicator
6. CH2 Volume Control
7. CH2 MIC/LINE Input Selector
8. RCA LINE-IN/AUX IN Volume Control
9. MASTER Volume Control for overall system volume
10. CH1 MIC/LINE IN (XLR/ 1/4" Combo Jack) Microphone Connector
11. CH2 MIC/LINE IN (XLR/ 1/4" Combo Jack) Microphone Connector
12. AUX IN (1/8" Jack) to connect with external music sources including CD/MP3/DVD/iPod® players etc.
13. LINE IN (Dual RCA Phone Jack) to connect with external music sources including CD/MP3/DVD/iPod® players etc.
14. High Frequency Control Knob
15. Mid Frequency Control Knob
16. Low Frequency Control Knob



# TQ8 Master Control Panel & Operation of the Traveler® Quest

## D. TV8 Master Control Panel

1. Turn the CH1 volume control **(D-3)** for wired Mic In jack **(D-10)** counterclockwise to decrease the volume and turn clockwise to increase the volume.
2. Turn the CH2 volume control **(D-6)** for wired Mic In jack **(D-11)** counterclockwise to decrease the volume and turn clockwise to increase the volume.
3. Turn the CH3 Volume Control **(D-8)** counterclockwise to decrease CH3 AUX/RCA Line In **(D-12 & D-13)** volume, and turn clockwise to increase.
4. Turn Master volume control **(D-9)** counterclockwise to decrease volume for the entire system, and clockwise to increase the system volume.
5. Press the Voice Priority button **(D-4)** to activate or end the microphone priority function.
6. CH1 Line/Mic In **(D-10)**: XLR/ 1/4" combo jack for wired microphones. Volume of this input is controlled by CH1 **(D-3)** and the Master Control Volume **(D-9)**. Press the Mic/Line switch as needed.
7. CH2 Line/Mic In **(D-11)**: XLR/ 1/4" combo jack for wired microphones. Volume of this input is controlled by CH2 **(D-6)** and the Master Control Volume **(D-9)**. Press the Mic/Line switch as needed.
8. Connect external audio sources, such as a CD/MP3 player or iPod® to the CH3 RCA LINE In **(D-13)** jack or CH3 AUX 1/8" **(D-12)** jack. The volume of the Line In is controlled solely by the CH3 AUX/RCA Line In Volume **(D-8)**.
9. Use the High **(D-14)**, Mid **(D-15)**, and Low **(D-16)** controls to adjust the High/Mid/Low frequencies by turning counter-clockwise to decrease, and clockwise to increase frequencies.

## E. Operation of the TQ8 Portable Sound System

### A. Power Supply/Charger (see page 2)

1. There is a universal DC switching power supply/charger built into the system that will operate on voltages of 100~240V, 50/60Hz. Verify that the voltage to which you are connecting is in that range and then connect the DC power cord from the DC IN **(A1)** to the wall outlet.

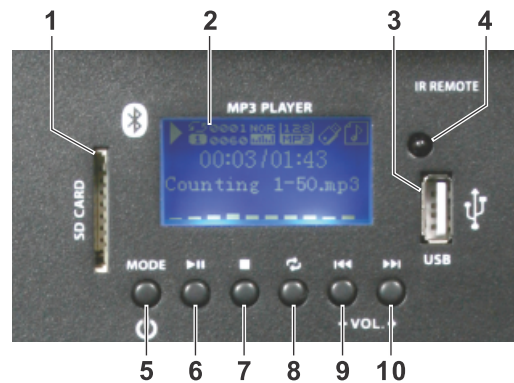
### B. Power Switch and Charge Indicator (see page 2)

1. When on, and on DC power, three GREEN LED lights will illuminate. When on, and using battery power, the RED LED light doesn't come on until the battery gets low.
2. The orange charge light stays on when charging. When the TQ8 is fully charged, the orange light will go out.

The Universal Power Supply/Battery Charger allows the Traveler® Quest to be used anywhere in the world. The Traveler® Quest will operate for an unlimited time on DC power and for about 24+ hours on just battery power. A full recharge of the batteries takes about 7-8 hours. The Traveler® Quest may be operated while recharging the batteries without affecting the charge time. If a power failure occurs when operating on DC, the Traveler® Quest will seamlessly switch over to battery power.

**TQ8 Battery Replacement Instructions on Page 16.**

## F. TQMP3 Player



- |   |  |
|---|--|
| <ol style="list-style-type: none"> <li>1. SD Card Slot: Accepts SD and SDHC Cards containing MP3 files</li> <li>2. LCD display</li> <li>3. USB Slot</li> <li>4. Remote IR Window</li> <li>5. Power/Mode Button: To Turn On/Off the Unit, or to switch between SD, USB, and Bluetooth® functions.</li> </ol> | <ol style="list-style-type: none"> <li>6. Play/Pause</li> <li>7. Stop</li> <li>8. Repeat/Shuffle</li> <li>9. Reverse/Volume Down</li> <li>10. Forward/Volume Up</li> </ol> |
|---|--|

## F. Operation of the TQMP3 Player

1. Insert a SD card (F-1) or USB Flash drive (F-3). Push the Mode Button (F-5) to turn on the player and switch between SD, USB, or Bluetooth® Modes.
2. Press the Play/Pause button (F-6) to start or pause the playing of a track. Push the Stop button (F-7) to stop or change the SD Card or USB Flash Drive.
3. Repeat/Shuffle (F-8) has three modes:
  1. Repeat one song
  2. Repeat all songs
  3. Shuffle for random play
4. Press the Forward (F-10) or Reverse (F-9) button momentarily to skip forward to the next track or reverse to the previous track. Holding down the Forward or Reverse button will raise and lower of the volume.

**Tip:** MP3 files on a USB or Flash card should be loaded on the media in the order of desired playback. Do not have files in individual folders.

## G. Guide for TQ8 MP3 Player Bluetooth® Function

### Activating the Bluetooth® Function:

Press the mode button to switch to the Bluetooth® function.

### Bluetooth® Pairing:

1. When Bluetooth® function is activated successfully, it will display “Connected.”
2. The LCD will display “unconnected” when first switching to the Bluetooth® section on the MP3 player.
3. Activate the Bluetooth® connection on your smartphone or any Bluetooth® device you are using.
4. Find the device name “Galaxy Quest” on the pairing list to connect your device.
5. When the pairing is successful, the LCD screen will display “Connected.”
6. You are ready to stream audio from your device.

### Caution:

1. During Bluetooth® connection, audio playback will stop when a call is made to your smartphone or tablet. When the call is finished, Bluetooth® will be relinked automatically and audio files will be played.
2. The Bluetooth® connection can be lost when the device gets out of range of the TQ8. When this happens it may automatically re-link when back in range, or it may have to be manually reset. This is dependant on the device and it's operating system. Typical range is ≤ 100'.

# TQMP3 Remote Functions & TQREC Wireless Single Mic Receiver

## H. TQRC Remote Control for TQMP3 Player



BUTTON	FUNCTIONS
<b>MODE</b>	Press to select USB, SD Card, or Bluetooth® <b>Mode</b> .
<b>▶  </b>	<b>PLAY / PAUSE</b> . Press to <b>Play</b> or <b>Pause</b> .
<b>▶▶</b>	Skip <b>Forward</b> to next track.
<b>◀◀</b>	Skip <b>Backward</b> to the previous track.
<b>EQ</b>	Switch through EQ Presets.
<b>0 ~ 9</b>	Use number keys to select specific track numbers
<b>ENTER</b>	Submit to set or change a function or setting.
<b>PICK SONG</b>	Confirm selected track after using number keys.
<b>+</b>	Increase the volume of the selected track.
<b>-</b>	Decrease the volume of the selected track.

## Module for the TRAVELER® QUEST

### I. Wireless Microphone Receiver (TQREC)

1. RF Indicator
2. AF Level Indicator
3. Power Switch & Mic. Volume



### I. Operation of the Wireless Mic Receiver (TQREC)

This system may include one or two receivers with fixed channel operation. These modules receive signals from the wireless handheld or body pack transmitters.

1. Turn the volume control (**I-3**) clockwise to turn on the receiver.
2. Adjust the volume control (**I-3**) to the desired level.
3. When receiving signal, the RF indicator (**I-1**) will light to show RF received and the AF indicator (**I-2**) will show audio received.



# WIRELESS TRAVELER QUEST TRANSMITTERS



## Traveler Quest Modules



[galaxyaudio.com/products/category/portable-pas/traveler-quest-modules](https://galaxyaudio.com/products/category/portable-pas/traveler-quest-modules)

## Traveler Quest Accessories



[galaxyaudio.com/products/category/portable-pas/traveler-quest-accessories](https://galaxyaudio.com/products/category/portable-pas/traveler-quest-accessories)

# TQHH Microphone Description & Functions

## J. Description and Functions for the Handheld Microphone TQHH



## J. Operation of the Handheld Microphone TQHH

### A. Battery Installation Steps:

1. Turn off the microphone before inserting batteries.
2. Unscrew the lower housing and slide it off the bottom of the microphone
3. Press in the latch to release the battery cover and fold it out.
4. Insert 2 "AA" sized 1.5V alkaline batteries.
5. Observe proper polarity while inserting batteries.
6. Move the battery cover back to its original position.
7. Install the lower housing back to the lower part of the microphone.

### B. Switch-On Steps:

1. Slide the power switch to the ON position to turn on the transmitter.
2. Since the transmitter is a fixed channel/frequency unit, the transmitter should automatically connect with the TQREC when both the receiver and transmitter are turned to the ON position.

### C. Switch Off Steps:

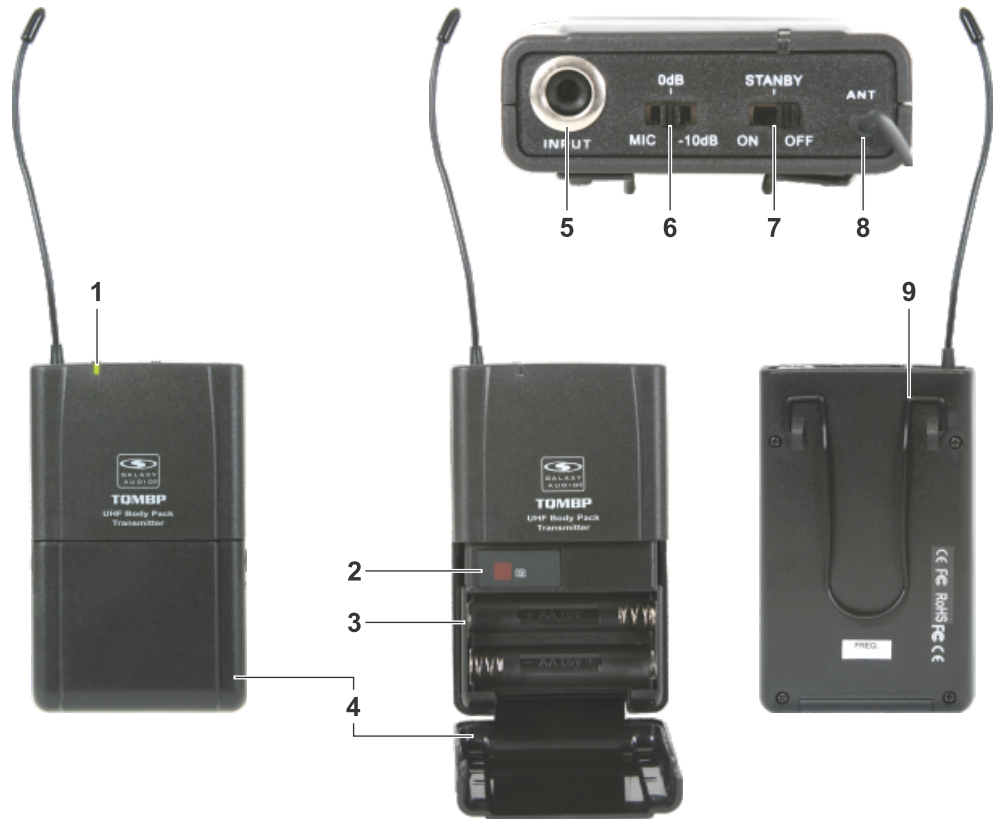
1. Slide the power switch to the OFF position to turn off the transmitter.



# TQMBP Body Pack Transmitter Description & Functions

## K. Description and Functions for the Body Pack Transmitter TQMBP

1. Power Light LED
2. IR Window
3. Battery Compartment
4. Battery Cover
5. 1/8" Locking Mic Input Jack
6. Gain Adjustment Switch with 3 Settings:  
Mic: Microphone  
0: Guitar with Passive Pickups  
-10dB: Guitar with Active Pickups
7. On/Off/Mute Switch
8. Antenna
9. Belt Clip



## K. Operation of the TQMBP Body Pack Transmitter

### A. Battery Installation Steps:

1. Switch the transmitter off before inserting batteries.
2. Flip open the battery cover.
3. Insert 2 "AA" sized 1.5V alkaline batteries.
4. Observe correct polarity when inserting batteries.
5. Flip the battery cover back to its original position.

### B. Switch-On Steps:

1. Switch the power to ON position
2. The LED will light GREEN to indicate that there is power to the unit.
3. Since the transmitter is a fixed channel/frequency unit, the transmitter should automatically connect with the TQREC when both the receiver and transmitter are turned to the ON position.

### C. Switch Off Steps:

1. Slide the power switch to the OFF position.

## L. Troubleshooting Transmitters:

### L. Troubleshooting:

#### A. LED doesn't light when power switch on transmitter is in ON position.

1. Make sure that the batteries are not discharged.
2. Make sure that the batteries are installed correctly.

#### B. No audio from transmitter.

1. Make sure that the power switch is turned on.
2. Check if the distance between the transmitter and the receiver is too great.
3. Check if the transmitter or the receiver is too close to any large metal objects.
4. Make sure receiver and transmitter volume are up.
5. Make sure that the batteries are not discharged.
6. Make sure that the batteries are installed correctly.

#### C. Interference and Signal Disturbance.

1. Make sure there are no other wireless systems operating on the same frequency in the same area. This includes microphones, televisions, radio stations, etc.

## M. Questions & Answers

### M. Q&A

**Q:** How long can the microphone be operated with fully charged batteries?

**A:** Alkaline batteries will last approximately 13 hours.

**Q:** How much time is required to recharge batteries from a fully exhausted state?

**A:** Approximately 4 to 5 hours.

## N. Maintenance

### Avoid Excessive Heat

Don't leave transmitter or receiver in hot sun, on a radiator, or near other sources of high temperature.

### Avoid Rough Handling

The transmitter and receiver may be damaged if dropped.

### Storage

Before storage, fully charge the batteries in both transmitters and receivers. If possible, recharge once a month during storage and again before first use.

### Storage (Long term)

Remove the internal batteries when storing the units for a long period of time.

### Replacing Batteries

Observe the correct polarity when installing batteries. Replace batteries only with the same or equivalent type.

### Battery Terminals

Keep the contacts clean and inspect them often to insure they are not corroded. If they become corroded, polish them with a pencil eraser.

# Optional Traveler® Quest Accessories

## HS13-UBK



UNI HEADSET MIC: Uni-directional headset microphone (wrap around head), TA3F connector, 50Hz-18kHz, mic diameter 12.25 mm.

## LV13-UBK



UNI LAV/LAPEL MIC: Uni-directional lav/lapel microphone, TA3F connector, 50Hz-19kHz mic diameter 13 mm.

## MST-C60



60" COMBINATION MIC STAND: Short straight or boom microphone stand. Can be a 63" tall straight tripod stand or a 41" tripod stand with 23" boom arm.

## MST-C90



90" COMBINATION MIC STAND: Tall straight or boom microphone stand. Can be a 93" tall straight tripod stand or a 62" tripod stand with 30" boom arm.

## MST-T50



TRIPOD STAND TILT, SWIVEL LEGS & BOOM: Mic stand w/ tilt, swivel legs, and pistol grip, all metal construction. Designed to work in a range of applications. Stand height: 41"-65" (1-1.63 m), boom length 18"-33" (0.5-0.86 m), weighs 6.75 lbs (3.06 kg) base radius 22" (56 cm).

## SST-35



TRIPOD SPEAKER STAND: Tripod speaker stand, stand height 51"-76" (1.29-1.93 m), weight 7.2 lbs (3.27 kg), base radius 31.5" (0.80 m).

## SST-45



DELUXE TRIPOD SPEAKER STAND: Deluxe speaker stand, stand height 58"-80.75" (1.47-2.05 m), weight 9 lbs (4 kg), base radius 40.5" (1.03 m).

## LSR38



LIFE SAVER: Durable reinforced vinyl, weighs up to 38 lbs w/ sand, 21 lbs w/ water. The weight of the mic and boom can offset the balance of the mic stand and cause it to tip. The Life Saver will also help stabilize a top-heavy speaker stand with a speaker on top.

## SDB40



LIFE SAVER: Dual wing design, durable reinforced vinyl, weighs up to 40 lbs w/ sand, 25 lbs w/ water. Nylon handle with clip. Helps protect equipment from damage and keeps stands upright and stable. Use with lighting, speaker, and PA equipment stands.

# Replaceable Traveler® Quest Parts

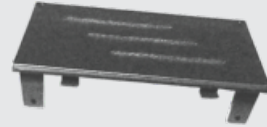
**TQ8PS**

Power Supply for the TQ8.



**TQRECPLATE**

Blank Receiver Slot Cover Plate for the TQ8.



**TQ8BATT**

Replacement Battery for the TQ8.



**TQRC**

Remote Control for the TQ8.



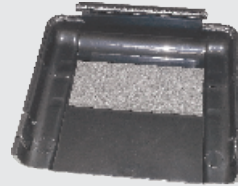
**TQMBPBC**

Belt Clip for the TQMBP.



**TQMBPBD**

Battery Door for the TQMBP.



**TQHHBC**

Battery Cover for the TQHH.



## CAUTION

Danger of explosion if the battery is incorrectly installed.  
Replace only with the same or the equivalent type.

## Specifications Portable Amplifier Speaker

# TQ8

<b>Output/Peak</b>	150 Watt
<b>Max SPL</b>	105dB
<b>Frequency Response</b>	70Hz ~ 18kHz ±3dB
<b>Battery</b>	12V, 2.8Ah * 2 (Lead-Acid) Rechargeable Batteries
<b>Battery Operation</b>	24+ Hours†
<b>Battery Charging</b>	7 ~ 8 Hours
<b>Speaker</b>	8" LF Woofer / 1" Horn
<b>S/N Ratio</b>	> 70dB
<b>Sensitivity</b>	Input Dependent
<b>Audio Input</b>	Two XLR/1/4" Combo Mic/Line In, RCA -1/8" Stereo-Aux Input, Bluetooth®, SD Card, & USB
<b>E.Q.</b>	Low, Mid, High
<b>Indicators</b>	Charging Meter LED, Signal/Limiter, Mic On
<b>Power Requirements</b>	32 VDC 2A (Universal 100-240VAC 50/60Hz Power Supply Included)
<b>Antenna</b>	Built-in Antenna
<b>Master Controls</b>	Master Volume, Low, Mid, High, CH1 Volume, CH2 Volume, CH3 Volume, CH1 Mic/Line, CH2 Mic/Line, Voice Priority
<b>MP3 Player Controls</b>	Power/Mode, Play/Pause, Stop, Repeat/Shuffle, Skip Forward/Volume Up, Skip Backward/Volume Down
<b>TQMP3 Supported File Formats</b>	WMA, WAV, & MP3
<b>Bluetooth Operating Distance</b>	Tested up to 100' (30 m) (Under Optimum Conditions)
<b>Wireless Operating Distance</b>	Tested up to 200' (60 m) (Under Optimum Conditions)
<b>Stand Mountable</b>	1 3/8" (35 mm) speaker stand
<b>Dimensions</b>	10.5" x 11.5" x 17.25" (267 x 292 x 438 mm)
<b>Weight</b>	18.85 lbs (8.55 kg) (batteries included)

†May vary depending on programs used

## Wireless Mic Receiver Module (TQREC)

<b>Oscillation Type</b>	PLL synthesized control OSC
<b>Frequency Range</b>	80Hz ~ 16kHz $\pm$ 3dB
<b>Frequency</b>	Channel Single Fixed Frequency
<b>Operating Temperature</b>	-10°C ~ 50°C
<b>Power Requirement</b>	12V/0.5A
<b>Display</b>	LED AF/RF Indicators
<b>Audio Output Level</b>	+5dBV
<b>Output Impedance</b>	3k Ohms
<b>Controls</b>	Volume
<b>S/N Ratio</b>	> 85dBA
<b>Dynamic Range</b>	> 83dB
<b>T.H.D.</b>	< 0.5%
<b>Operating Distance</b>	160' (50 m) (Under Optimum Conditions)
<b>RF Sensitivity</b>	< -95dBm
<b>Image Rejection</b>	> 50dB



## Handheld Microphone (TQHH)

Max Audio Input Level	120 dB
Gain Adjust	N/A
RF Output	10 mW
Frequency Response	100Hz ~ 12kHz $\pm$ 10 dB
Spurious Rejection	> 45 dB
Input Impedance	5 k Ohms
Display	LED
Dimensions	6.65" x 2.16" (245 x 54.75 mm) (L x Dia.)
Weight	9.28 oz (263 g) (without batteries)
Power Requirements	2 "AA" size alkaline or rechargeable batteries
Battery Life	About 8 hours (alkaline)

## Body Pack Transmitter (TQMBP)

Max Audio Input Level	0 dBV to +20 dBV
Gain Adjust	Mic/0 dB/-10 dB
RF Output	10 mW
Spurious Rejection	> 45 dB
Input Impedance	5 k Ohms
Display	LED
Dimensions	3.3" x 2.6" x 1" (85 x 65 x 24 mm)(HxWxD)
Weight	2.8 oz (80 g) (without batteries)
Power Requirements	2 "AA" size alkaline or rechargeable batteries
Battery Life	About 8 hours (alkaline)

**Notice:** Changes or modifications not expressly approved by the party responsible for compliance could void the user's authority to operate the equipment.

**IMPORTANT NOTE:** To comply with the FCC RF exposure compliance requirements, no modifications to the antenna or the device is permitted. Any change to the antenna or the device could result in the device exceeding the RF exposure requirements and void the user's authority to operate the device.

This device complies with Part 15 of the FCC Rules. Operation is subject to the following two conditions: (1) this device may not cause harmful interference, and (2) this device must accept any interference received, including interference that may cause undesired operation.

# Battery Replacement Instructions for TQ8

## Battery Replacement Instructions for TQ8

Lead-Acid battery

1. **\*\*Make sure the power cable is unplugged and the power switch is in the off position before changing out the batteries\*\*** and only replace with batteries that are the same size and rating as the originals (12V - 2.8 AH Sealed Lead Acid).
2. On the back of the TQ8 Galaxy Audio Traveler® Quest, you will see large black plate. Remove the screws from the plate. The TQ8 has 4 screws around the edge.



(x4 Screws)

3. Once you remove the plate, carefully pull the batteries out far enough to reach the wires. Notice that wires are color coded Red for the Positive (+) terminal and Black for the Negative (-). Carefully pulling on the wire clip, detach the wires from the battery. This is usually easier with needle nose pliers.



4. Pull the batteries the rest of the way out. Now carefully slide the new batteries in, keeping the wires accessible. Reconnect the wires to the new battery with care to ensure you connect the correct terminals to the correct wire; Red to the Positive terminal and Black to the Negative terminal. When sliding the battery back into the compartment, watch to make sure the wires do not pull away from the battery terminals. If this occurs, gently squeeze the connector with a pair of pliers to get a tighter fit.
5. Although the replacement batteries are charged, it's still suggested to charge the Traveler® Quest for at least 12 hours before use.

**Note:** A good tip to prolonging the life of your battery is to leave the Traveler® Quest plugged into DC power when not in use.

This will ensure you always have a fully charged unit and will prevent the batteries from self-discharging. The Traveler® Quest has an overcharge circuit so leaving the unit plugged in will not hurt the batteries or the unit.

Thank you for using Galaxy Audio Products.

This page is intentionally left blank





MAKERS OF THE ORIGINAL  
HOT SPOT PERSONAL MONITOR



[www.galaxyaudio.com](http://www.galaxyaudio.com)

# TRAVELER<sup>®</sup> QUEST

## OWNERS MANUAL

### LIMITED THREE YEAR WARRANTY

Please visit [galaxyaudio.com](http://galaxyaudio.com) for the latest updates

<http://www.galaxyaudio.com/support/warranty>



[www.galaxyaudio.com/support/warranty](http://www.galaxyaudio.com/support/warranty)

1-800-369-7768 [www.galaxyaudio.com](http://www.galaxyaudio.com)

Please visit [galaxyaudio.com](http://galaxyaudio.com) for the latest updates

Specifications in this manual are subject to change without notice.



© 2017 Copyright Galaxy Audio Inc.

V20170505