

Roland



UM-ONE

USB MIDI INTERFACE

Owner's Manual

For the following languages, a PDF version of the Owner's Manual can be found on the CD-ROM.

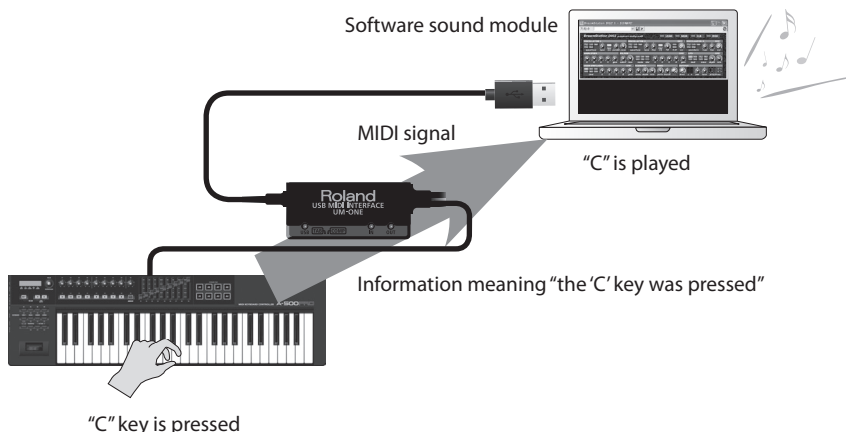
Deutsch, Français, Italiano, Español, Português, Nederlands



What is MIDI?

MIDI is an internationally recognized standard for exchanging performance information between electronic musical instruments and computers.

For example, in the illustration below, a MIDI signal meaning “the ‘C’ key on the MIDI keyboard was pressed” passes through the UM-ONE and is received by the computer’s software sound module, and then the software sound module plays the note “C.”



In this way, MIDI is used to send performance information to other instruments; for example “the ‘C’ key was pressed with a certain amount of force,” “the instrument was changed to a violin sound,” “the volume was raised/lowered,” “the pitch was raised/lowered,” etc. In other words, MIDI is the “language of musical instruments.”

MIDI signals are merely performance instructions, therefore a MIDI sound module, such as a software sound module, is required to produce sound.

All software sound modules and DAW (Digital Audio Workstation) software support MIDI.

- * DAW software is a term that refers to music production software, such as SONAR.

Note

Do not connect the UM-ONE to the computer until the driver has been installed (p. 9).

Before using this unit, carefully read the sections entitled: “USING THE UNIT SAFELY” and “IMPORTANT NOTES” (p. 3; p. 5). These sections provide important information concerning the proper operation of the unit. Additionally, in order to feel assured that you have gained a good grasp of every feature provided by your new unit, this Owner’s Manual should be read in its entirety. The manual should be saved and kept on hand as a convenient reference.

Copyright © 2011 ROLAND CORPORATION

All rights reserved. No part of this publication may be reproduced in any form without the written permission of ROLAND CORPORATION.

Roland is a registered trademark of Roland Corporation in the United States and/or other countries.

USING THE UNIT SAFETY

INSTRUCTIONS FOR THE PREVENTION OF FIRE, ELECTRIC SHOCK, OR INJURY TO PERSONS

About ⚠ WARNING and ⚠ CAUTION Notices

⚠ WARNING	Used for instructions intended to alert the user to the risk of death or severe injury should the unit be used improperly.
⚠ CAUTION	Used for instructions intended to alert the user to the risk of injury or material damage should the unit be used improperly. * Material damage refers to damage or other adverse effects caused with respect to the home and all its furnishings, as well to domestic animals or pets.

About the Symbols

	The ⚠ symbol alerts the user to important instructions or warnings. The specific meaning of the symbol is determined by the design contained within the triangle. In the case of the symbol at left, it is used for general cautions, warnings, or alerts to danger.
	The ⚡ symbol alerts the user to items that must never be carried out (are forbidden). The specific thing that must not be done is indicated by the design contained within the circle. In the case of the symbol at left, it means that the unit must never be disassembled.
	The ⚡ symbol alerts the user to things that must be carried out. The specific thing that must be done is indicated by the design contained within the circle. In the case of the symbol at left, it means that the power-cord plug must be unplugged from the outlet.

ALWAYS OBSERVE THE FOLLOWING

⚠ WARNING

- Do not open or perform any internal modifications on the unit.
- Do not attempt to repair the unit, or replace parts within it (except when this manual provides specific instructions directing you to do so). Refer all servicing to your retailer, the nearest Roland Service Center, or an authorized Roland distributor, as listed on the "Information" page.
- Never install the unit in any of the following locations.
 - Subject to temperature extremes (e.g., direct sunlight in an enclosed vehicle, near a heating duct, on top of heat-generating equipment); or are
 - Damp (e.g., baths, washrooms, on wet floors); or are
 - Exposed to steam or smoke; or are
 - Subject to salt exposure; or are
 - Humid; or are
 - Exposed to rain; or are
 - Dusty or sandy; or are
 - Subject to high levels of vibration and shakiness.

⚠ WARNING

- Do not place containers containing liquid on this product. Never allow foreign objects (e.g., flammable objects, coins, wires) or liquids (e.g., water or juice) to enter this product. Doing so may cause short circuits, faulty operation, or other malfunctions.
- Immediately disconnect the USB cable, and request servicing by your retailer, the nearest Roland Service Center, or an authorized Roland distributor, as listed on the "Information" page when:
 - Objects have fallen into, or liquid has been spilled onto the unit; or
 - If smoke or unusual odor occurs
 - The unit has been exposed to rain (or otherwise has become wet); or
 - The unit does not appear to operate normally or exhibits a marked change in performance.
- In households with small children, an adult should provide supervision until the child is capable of following all the rules essential for the safe operation of the unit.
- Protect the unit from strong impact. (Do not drop it!)

USING THE UNIT SAFETY

WARNING

- DO NOT play a CD-ROM disc on a conventional audio CD player. The resulting sound may be of a level that could cause permanent hearing loss. Damage to speakers or other system components may result.



CAUTION

- Try to prevent cords and cables from becoming entangled. Also, all cords and cables should be placed so they are out of the reach of children.
- Never climb on top of, nor place heavy objects on the unit.
- Disconnect all cords coming from external devices before moving the unit.



IMPORTANT NOTES

Placement

- Do not expose the unit to direct sunlight, place it near devices that radiate heat, leave it inside an enclosed vehicle, or otherwise subject it to temperature extremes. Excessive heat can deform or discolor the unit.
- When moved from one location to another where the temperature and/or humidity is very different, water droplets (condensation) may form inside the unit. Damage or malfunction may result if you attempt to use the unit in this condition. Therefore, before using the unit, you must allow it to stand for several hours, until the condensation has completely evaporated.
- Do not put anything that contains water (e.g., flower vases) on this unit. Also, avoid the use of insecticides, perfumes, alcohol, nail polish, spray cans, etc., near the unit. Swiftly wipe away any liquid that spills on the unit using a dry, soft cloth.
- Microsoft, Windows and Windows Vista are either registered trademarks or trademarks of Microsoft Corporation.
- The screen shots in this document are used in compliance with the guidelines of the Microsoft Corporation.
- Windows® is known officially as: "Microsoft® Windows® operating system."
- Apple, Macintosh and Mac OS are either registered trademarks or trademarks of Apple Inc.
- Company names and product names appearing in this document are registered trademarks or trademarks of their respective owners.
- MMP (Moore Microprocessor Portfolio) refers to a patent portfolio concerned with microprocessor architecture, which was developed by Technology Properties Limited (TPL). Roland has licensed this technology from the TPL Group.

Maintenance

- For everyday cleaning wipe the unit with a soft, dry cloth or one that has been slightly dampened with water. To remove stubborn dirt, use a cloth impregnated with a mild, non-abrasive detergent. Afterwards, be sure to wipe the unit thoroughly with a soft, dry cloth.
- Never use benzine, thinners, alcohol or solvents of any kind, to avoid the possibility of discoloration and/or deformation.

Additional Precautions

- Use a reasonable amount of care when using its jacks and connectors. Rough handling can lead to malfunctions.
- When connecting / disconnecting all cables, grasp the connector itself—never pull on the cable. This way you will avoid causing shorts, or damage to the cable's internal elements.
- When you need to transport the unit, package it in the box (including padding) that it came in, if possible. Otherwise, you will need to use equivalent packaging materials.

Handling CDs

- Avoid touching or scratching the shiny underside (encoded surface) of the disc. Damaged or dirty CD discs may not be read properly. Keep your discs clean using a commercially available CD cleaner.

MEMO

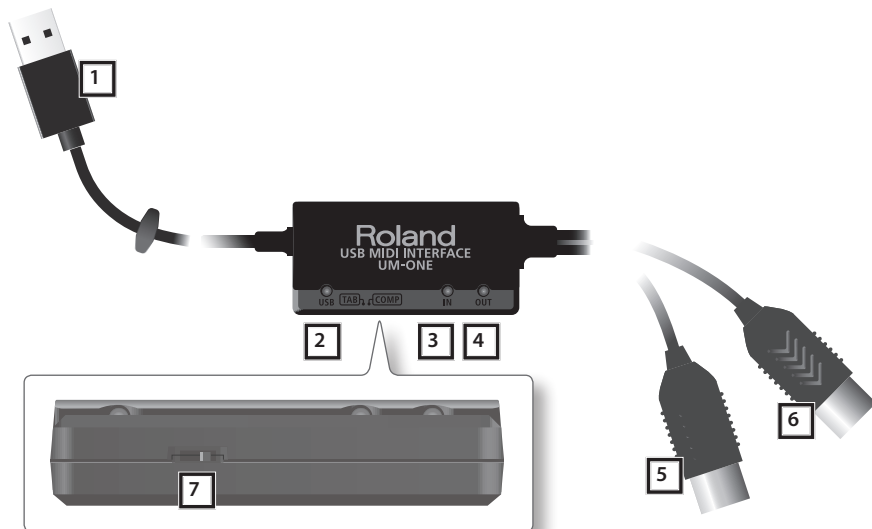
Contents

USING THE UNIT SAFETY	3
IMPORTANT NOTES	5
Panel Descriptions	8
Driver Installation	9
Basic Use	14
Recording MIDI Data, Playing a Software Sound Module	14
Playing Back MIDI Data	15
Connecting the External Equipment to UM-ONE	16
Using the UM-ONE with a Computer	16
Using the UM-ONE with an iPad	16
Troubleshooting	18
Driver Installation	18
Using the UM-ONE	19
Changing Computer Settings to Avoid Problems	22
Driver Signing Options Setting (Windows XP)	22
Power Management Settings	22
Reinstalling the Driver	23
Deleting the Driver	23
Lightening the MIDI Load (Windows)	24
Main Specifications	25

Panel Descriptions

Note

Do not connect the UM-ONE to the computer until the driver has been installed (p. 9).



No.	Name	Description
1	USB Cable	Connects the UM-ONE to a computer.
2	USB Indicator	Lights when the UM-ONE is connected to a computer and the computer has detected the UM-ONE.
3	MIDI IN Indicator	Lights when MIDI messages are received from the device connected to the MIDI IN cable.
4	MIDI OUT Indicator	Lights when MIDI messages are sent from the computer.
5	MIDI IN Cable (CONNECT TO MIDI OUT)	Connects to the MIDI OUT connector of the MIDI device (such as a MIDI keyboard) that will be used for MIDI recording or for playing a software sound module.
6	MIDI OUT Cable (CONNECT TO MIDI IN)	Connects to the MIDI IN connector of a hardware sound module when DAW software is used to play the hardware sound module.
7	[COMP/TAB] Switch	<p>COMP: For connecting a computer. Refer to "Using the UM-ONE with a Computer" (p. 16). In order to use the COMP setting, you must install the driver in your computer.</p> <p>TAB: For connecting an iPad. Refer to "Using the UM-ONE with an iPad" (p. 16). Driver installation is not necessary.</p>

Driver Installation

Windows

Mac OS X

Note

Do not connect the UM-ONE to the computer until you are directed to do so.

A “driver” is software that transfers data between the UM-ONE and application software running on your computer, when your computer and the UM-ONE are connected.

1. Start up the computer without the UM-ONE connected.

Disconnect all USB cables other than those for a USB keyboard and/or USB mouse (if used).

Windows

Log on to the computer with a user account that has administrator privileges.

Windows 8

Switch to the “Desktop.”

2. Exit all applications that are running.

3. Insert the included CD-ROM into the CD-ROM drive.

4. Double-click the following file on the included CD-ROM and start the installer.

Operating System	File
Windows	[Setup] in the [Driver] folder
Mac OS X	[UMOne_USBDriver] in the [Driver] folder

Refer to the Roland website for the latest USB drivers and information about compatibility with the latest operating system versions.

<http://www.roland.com/>

Windows

users: continue from p. 10

Mac OS X

users: continue from p. 12

Windows

5. When a confirmation screen regarding user account control appears, click [Yes] or [Continue].
6. When “The UM-ONE Driver will be installed on your computer” appears, click [Next].
7. Click [Next] again.

Windows 8/Windows 7/Windows Vista

If a dialog box regarding Windows security appears, click [Install].

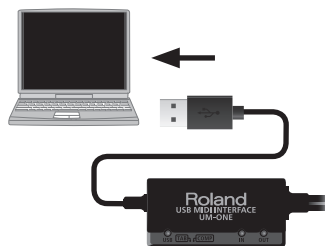
Windows XP

If the “Software Install” dialog box appears, click [Continue] to proceed with the installation.

If you cannot proceed, click [OK] to cancel the installation. Change the settings as described in “Driver Signing Options Setting (Windows XP)” (p. 22) and try installing again.

8. When “Ready to install the driver.” appears, connect the USB cable of the UM-ONE to the computer.

It may take several minutes for the driver to be installed.



Windows 8/Windows 7/Windows Vista

If other messages appear, follow the instructions on the screen. The driver will be installed automatically.

Windows XP

“Found new hardware” will appear in the lower-right corner of the screen.

Windows 8/Windows 7/Windows Vista

Windows XP

Windows 8/Windows 7/Windows Vista

9. When "Installation has been completed." appears, click [Close].

Close the "UM-ONE Driver Setup" dialog box.

If the "Change System Settings" dialog box appears, click [Yes] to restart Windows.

Installation complete.

Windows XP

9. If a dialog box that asks whether you want to connect to Windows Update appears, select [No, not this time] and click [Next].



10. Select [Install the software automatically (Recommended)] and click [Next].
11. If the "Hardware Installation" dialog box appears, click [Continue Anyway] to proceed with installation.



12. When "Completing the Found New Hardware Wizard" appears, click [Finish].
13. When "Installation has been completed." appears, click [Close] to close the "UM-ONE Driver Setup" dialog box.

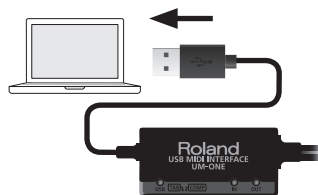
If the "System Settings Change" dialog box appears, click [Yes] to restart Windows.

Installation complete.

Mac OS X

If a dialog box requesting a password appears during installation, enter a computer administrator's user name and password and click the [Install Software] button or [OK] button.

5. When "Welcome to the UM-ONE Driver installer" appears, click [Continue].
6. If the screen for selecting the installation destination appears, select the startup disk and click [Continue].
7. When the installation type appears, click [Install] or [Upgrade].
8. Click [Continue Installation] in the next screen.
9. When installation has finished, click [Restart] to restart the computer.
It may take some time for the computer to restart.
10. After the computer restarts, connect the USB cable of the UM-ONE to the computer.
11. Open the [Applications] folder and then the [Utilities] folder, and then double-click [Audio MIDI Setup].



The "Audio MIDI Setup" dialog box will appear.

12. Open the MIDI device settings dialog box.

Operating System	Operation
Mac OS X 10.6 or later	Select [Show MIDI Window] in the [Window] menu. (The "MIDI Studio" window will appear.)
Mac OS X 10.5 or earlier	Click the [MIDI Devices] tab.

13. Confirm that "UM-ONE" appears in the "MIDI Studio" window or the "Audio MIDI Settings" dialog box.

If "UM-ONE" does not appear or if it is grayed out, it means that the UM-ONE is not being detected properly. Click [Rescan MIDI]. Also try disconnecting and reconnecting the UM-ONE's USB cable.

14. Click [Add Device] one time.

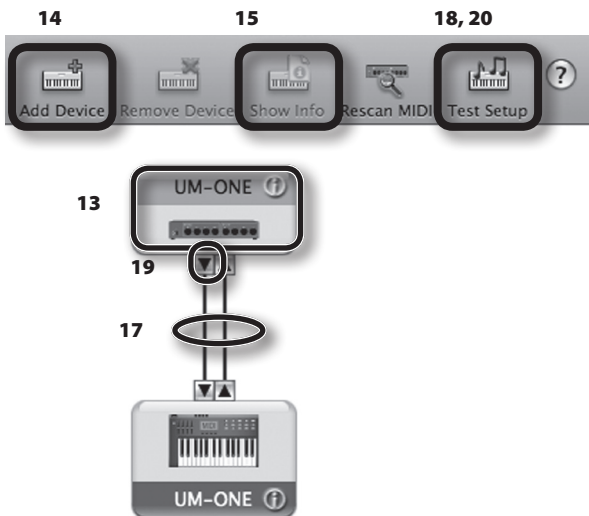
One [new external device] will appear.

15. Click the added [new external device], and then click [Show Info].

16. In the [Device Name] field, enter "UM-ONE" and click [Apply].



17. Using your mouse, drag and connect the up/down arrows (which represent the input/output ports of each device) of the [UM-ONE] and the [UM-ONE] that you added so that they are connected as shown in the figure.



18. Click [Test Setup].

19. Click the UM-ONE's down arrow.

If the settings are correct, the UM-ONE's MIDI OUT indicator will blink.

20. Click [Test Setup] again and complete the confirmation.

21. Close the "MIDI Studio" window or the "Audio MIDI Setup" dialog box.

Installation complete.

Basic Use

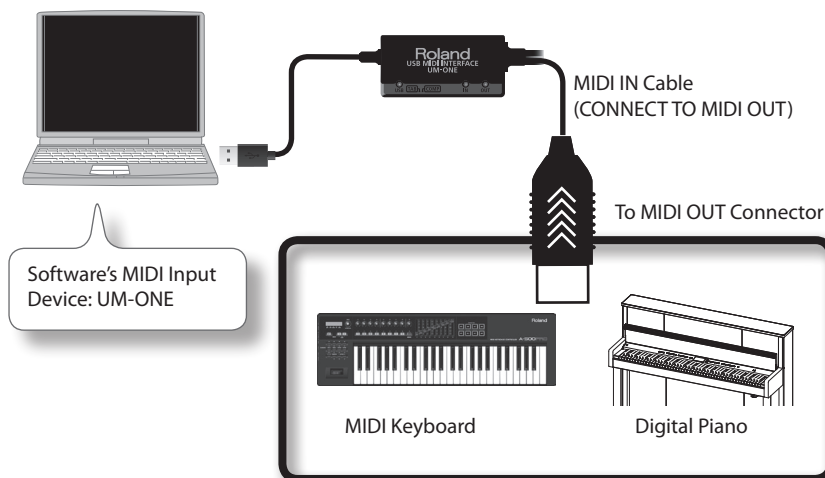
Precautions Concerning the Use of Software

Before using the UM-ONE with your software, please note the following points.

- Connect the UM-ONE to the computer before starting the software.
- Do not disconnect the UM-ONE from the computer while the software is running. After exiting the software, disconnect the UM-ONE.
- Select the UM-ONE for the software's MIDI device setting.
- The UM-ONE will not operate in the Mac OS X Classic environment. Use the UM-ONE when the Classic environment is not running.

Recording MIDI Data, Playing a Software Sound Module

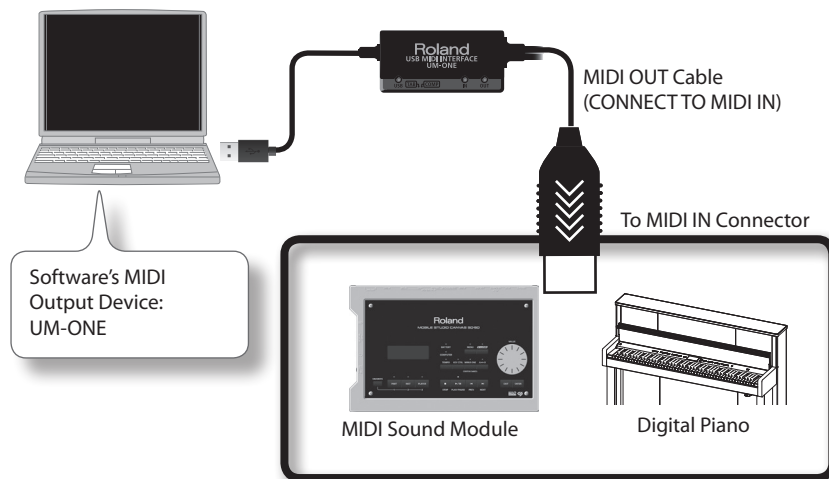
To transmit MIDI messages from a MIDI keyboard or digital piano in order to record MIDI data using DAW software or play a software sound module, make the following connections and settings.



- * When connecting other devices, always be sure to turn the volume down before connecting or disconnecting cables to prevent damage to speakers.

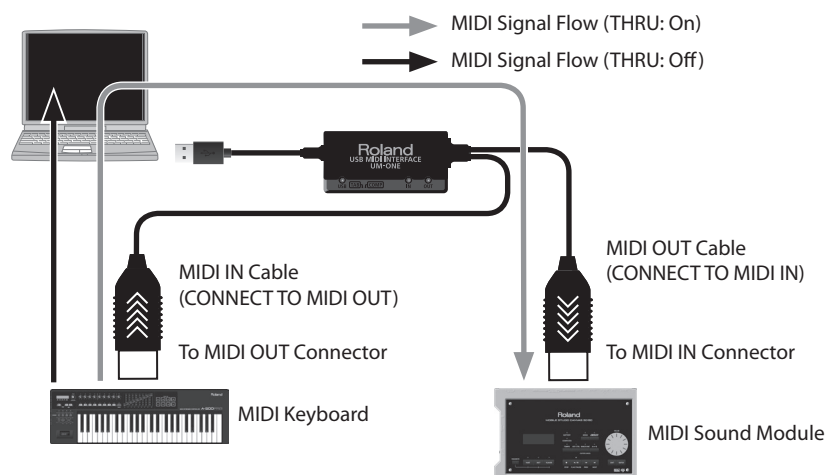
Playing Back MIDI Data

To send MIDI messages that were recorded using DAW software to a MIDI sound module or software sound module, make the following connections and settings.



*** When connecting other devices, always be sure to turn the volume down before connecting or disconnecting cables to prevent damage to speakers.**

To play a MIDI keyboard and use a MIDI sound module as the instrument, turn on the software's MIDI THRU feature.



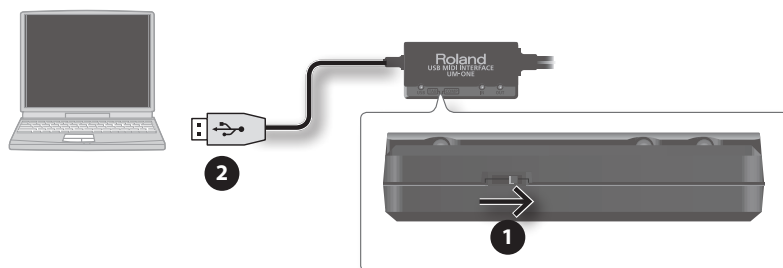
Connecting the External Equipment to UM-ONE

The [COMP/TAB] switch needs to be placed at the setting that's appropriate for the device to which you're connecting the UM-ONE.

Switch position	Connected device
COMP	For connecting a computer. Refer to "Using the UM-ONE with a Computer" (p. 16). In order to use the COMP setting, you must install the driver in your computer.
TAB	For connecting an iPad. Refer to "Using the UM-ONE with an iPad" (p. 16). Driver installation is not necessary.

Using the UM-ONE with a Computer

If using the UM-ONE while connected to a computer, set the UM-ONE's [COMP/TAB] switch to the "COMP" position.



1. Set the UM-ONE's [COMP/TAB] switch to the "COMP" position.
2. Connect the UM-ONE to the computer.

MEMO

If you want to connect the UM-ONE to a computer in which the USB driver has not been installed, disconnect the UM-ONE's USB cable from the computer, and install the USB driver in the computer as described in the section "Driver Installation" in the UM-ONE owner's manual.

Using the UM-ONE with an iPad

If using the UM-ONE with an iPad, set the UM-ONE's [COMP/TAB] switch to the "TAB" position.

Before you continue, please make sure to access the following URL and check the operating requirements and other relevant information.

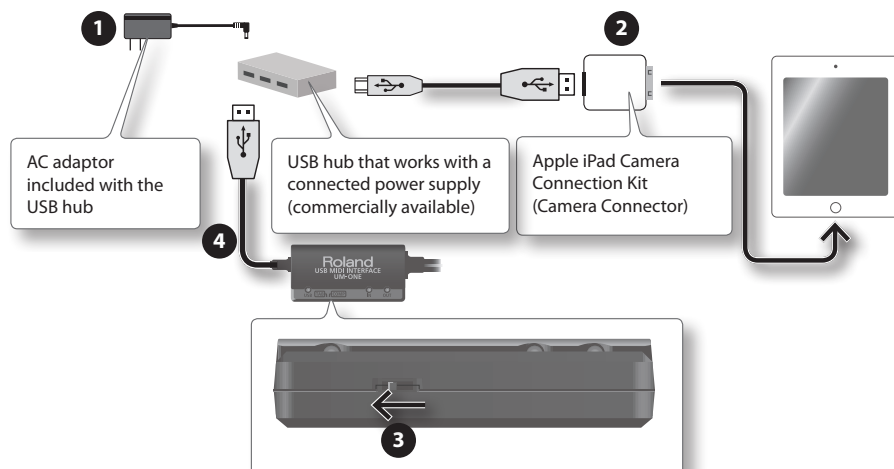
<http://www.roland.com/support/>

NOTE

- The first-generation iPad cannot be used.
- The iPad app you're using must support CoreMIDI.

You'll need to provide the following items

- iPad (made by the Apple Inc.)
- Apple iPad Camera Connection Kit (Camera Connector; made by the Apple Inc.)
- USB hub (commercially available; a type to which an AC adaptor or other power supply is connected)
- USB cable (commercially available)



1. Power up your USB hub (connect the AC adaptor to the USB hub).
2. Connect the USB hub to the iPad using the Camera Connector of the Apple iPad Camera Connection Kit.
3. Set the UM-ONE's [COMP/TAB] switch to the "TAB" position.
4. Connect the UM-ONE to the USB hub.

MEMO

Operation may be unstable if you use a USB hub of a type that does not have a connected power supply, or if you connect the UM-ONE directly to the iPad.

Troubleshooting

If you experience problems, read this chapter first. It contains tips for solving most problems. If this chapter cannot help you solve a problem, please refer to the support section of our website. If the problem is not resolved, refer to the contact information listed at the end of this document.

Roland support website: <http://www.roland.com/>

Driver Installation

Problem	Confirmation	Resolution
Installer does not start	Are you attempting to install from a networked CD-ROM drive?	You cannot install from a networked CD-ROM drive.
Cannot install	Are you logged on with a user account that does not have administrator privileges?	Log on to the computer with a user account that has administrator privileges. For details, consult the administrator for your computer system.
	Is the "Driver Signing Options" setting set to [Block]? (Windows XP)	Change the "Driver Signing Options" setting (p. 22).
	Are other programs or resident programs (such as antivirus programs) running?	Be sure to exit all other programs before installation.
Warning or error appears during installation (Windows)	In the "Device Manager," do you see "Other device," "Unknown device," or a device for which "?", "!", or "x" is displayed?	Reinstall the UM-ONE driver (p. 23).
Installer does not exit	Is your computer running on battery power?	Connect the power cord to the computer.
	Other than a mouse and keyboard, are any USB devices connected?	Make sure that there are no USB devices connected to the computer (other than a mouse and keyboard) during installation.
	Is the UM-ONE connected to a USB hub that is connected to a power supply?	Use a USB hub that connects to a power supply.
"Found New Hardware Wizard" appears again after driver was installed (Windows XP)	Did you connect the UM-ONE to a different USB connector than the one you used when installing the driver?	If you change the USB connector to which the UM-ONE is connected, the "Found New Hardware Wizard" may appear again even if the driver has already been installed on the computer. Follow step 9 of the driver installation procedure (p. 11) and install the driver.

Problem	Confirmation	Resolution
Numeral such as "2-" appears at beginning of device name (Windows)	Did you connect the UM-ONE to a different USB connector than the one you used when installing the driver?	<p>If you connect the UM-ONE to a different USB connector than the one you used when installing the driver, a numeral may appear with the device name.</p> <p>To have the device name appear without the numeral, connect the UM-ONE to the same USB connector used during installation, or reinstall the driver (p. 23).</p>

Using the UM-ONE

Problem	Confirmation	Resolution
Cannot select or use UM-ONE device	Is the driver installed?	Install the driver (p. 9).
	Is the UM-ONE's USB indicator off?	<p>Make sure that the UM-ONE is connected to the computer correctly.</p> <p>If the problem is not resolved, reinstall the driver (p. 23).</p>
	Is the UM-ONE's device name displayed?	<p>Exit all programs that are using the UM-ONE, disconnect the UM-ONE's USB cable, and then reconnect it.</p> <p>If the problem is not resolved, reinstall the driver (p. 23).</p>
	Did the computer enter standby (suspend) mode, hibernate mode, or sleep mode while the UM-ONE was connected?	<p>Exit all programs that are using the UM-ONE, disconnect the UM-ONE's USB cable, and then reconnect it.</p> <p>If the problem is not resolved, restart the computer.</p>
	Did you disconnect and reconnect the USB cable while using the UM-ONE?	<p>Exit all programs that are using the UM-ONE, disconnect the UM-ONE's USB cable, and then reconnect it.</p> <p>If the problem is not resolved, restart the computer.</p>
	Was the UM-ONE connected to the computer while the computer was starting up?	<p>Connect the UM-ONE after the computer has started up.</p> <p>(With some computers, the UM-ONE cannot be used if it is connected to the computer while the computer is starting up.)</p>
	Are you using the Media Player included with Windows? (Windows 8/Windows 7/Windows Vista)	<p>Use different software.</p> <p>MIDI devices cannot be selected in Media Player.</p>

Troubleshooting

Problem	Confirmation	Resolution
Cannot select or use UM-ONE device	Have you configured "Audio MIDI Setup"? (Mac OS X)	Configure Audio MIDI Setup (p. 12).
	Is the driver installed?	Install the driver (p. 9).
	Is the software's input device and output device configured?	Select the UM-ONE as the input and output device (p. 14, p. 15).
	Is the UM-ONE's USB indicator off?	Make sure that the UM-ONE is connected to the computer correctly. If the problem is not resolved, reinstall the driver (p. 23).
	Did you make a mistake when connecting the MIDI IN cable (CONNECT TO MIDI OUT) and MIDI OUT cable (CONNECT TO MIDI IN)?	Connect the MIDI IN cable (CONNECT TO MIDI OUT) to a MIDI OUT connector, and connect the MIDI OUT cable (CONNECT TO MIDI IN) to a MIDI IN connector.
	Is the sound module connected to the MIDI OUT cable receiving MIDI signals?	Confirm the settings of the sound module.
	Did the computer enter standby (suspend) mode, hibernate mode, or sleep mode while the UM-ONE was connected?	Exit all programs that are using the UM-ONE, disconnect the UM-ONE's USB cable, and then reconnect it. If the problem is not resolved, restart the computer.
	Did you disconnect and reconnect the USB cable while using the UM-ONE?	Exit all programs that are using the UM-ONE, disconnect the UM-ONE's USB cable, and then reconnect it. If the problem is not resolved, restart the computer.
	Was the UM-ONE connected to the computer while the computer was starting up?	Connect the UM-ONE after the computer has started up. (For some computers, the UM-ONE cannot be used if it is connected to the computer while the computer is starting up.)
	Did the computer handle a processor-intensive task while you were using the UM-ONE?	Stop playback or recording, and then try playing back or recording again. If the problem is not resolved, exit all programs that are using the UM-ONE, disconnect the UM-ONE's USB cable, and then reconnect it.
Cannot play back or record	Are you using the Media Player included with Windows? (Windows 8/Windows 7/Windows Vista)	Use different software. MIDI devices cannot be selected in Media Player.

Problem	Confirmation	Resolution
Duplicate notes sound	Is the sound module set to Local On? Is the software's THRU function turned on?	Configure as follows. Sound module: Local Off Software's THRU function: Off For details, refer to the owner's manual for the equipment you are using.
Sound is interrupted during playback, sounds are missing	Are multiple programs running?	Exit programs that are not in use.
	Is the system software up to date?	Run Windows Update or Microsoft Update and make sure the system software is up to date.
	Are you using Mac OS X Software Update?	Run Software Update and make sure the system software is up to date.
	Are the drivers for the computer's internal chipset and graphics card up to date?	Update to the latest drivers.
	Are the drivers for the computer's LAN hardware (wired and wireless) up to date?	Install the latest LAN hardware drivers. If the problem is not resolved, disable the LAN.
	Is the computer's power management function set to energy saving mode?	Configure power management settings (p. 22).
	Is the UM-ONE connected to a USB hub?	Connect the UM-ONE directly to one of the computer's USB connectors.
	Is the driver's [Lighten Load] setting turned off? (Windows)	Place a check in the [Lighten Load] check box (p. 24).
	Did you try to play back or record immediately after the computer started up or after waking up from sleep mode?	Wait and try playing back or recording later.

To open the Control Panel **Windows 8**

1. On the Start screen, click the Desktop.
2. Move the mouse pointer to the upper right or lower right corner of the screen to display the charms.
* On touch-enabled PCs, swipe from the right side of the screen to display the charms.
3. Click [Settings] and display the "Settings charms."
4. In "Settings charms," click [Control Panel] to open the "Control Panel."

Changing Computer Settings to Avoid Problems

Changing these computer settings can help you avoid the problems described in “Driver Installation” (p. 18) and “Using the UM-ONE” (p. 19).

Driver Signing Options Setting (Windows XP)

If the “Driver Signing Options” setting is set to [Block], you cannot install the driver. Configure as follows.

1. **Open the “Control Panel,” click [Performance and Maintenance], and then click the [System] icon.**
If you have selected Classic view, double-click [System].
2. **Click the [Hardware] tab, and then click [Driver Signing].**
The “Driver Signing Options” dialog box will open.
3. **In the “Driver Signing Options” dialog box, select [Warn] or [Ignore], and then click [OK].**
4. **Click [OK] to close the “System Properties” dialog box.**
5. **Install the driver as described in “Driver Installation” (p. 9).**

When you have completed the installation, return the “Driver Signing Options” setting to its original setting.

Power Management Settings

If the sound is interrupted during a performance or if sounds are missing, you may be able to resolve the problem by changing the computer’s power management settings.

Windows 8/Windows 7/Windows Vista

1. **Open the “Control Panel,” click [System and Security] or [System and Maintenance], and then click [Power Options].**
 - If you have selected icon view in Windows 8/Windows 7, double-click the [Power Options] icon.
 - If you have selected Classic view in Windows Vista, double-click the [Power Options] icon.
2. **When “Select a power plan” appears, select [High performance].**
3. **Click [Change plan settings] next to [High performance].**
If “High performance” is not displayed in Windows 8/Windows 7, click [Show additional plans].
4. **Click [Change settings that are currently unavailable].**
5. **In the [Advanced settings] tab of the “Power Options” control panel, click the [+] mark next to “Hard disk,” and then click the [+] mark next to “Turn off hard disk after.”**
6. **Click [Setting], click the down arrow, and then select [Never].**

7. Click [OK] to close the “Power Options” window.
8. Close the “Edit plan settings” screen.

Windows XP

1. Open the “Control Panel,” click [Performance and Maintenance], and then click [Power Options].
If you have selected Classic view, double-click [Power Options].
2. Click the [Power Schemes] tab, and set the “Power schemes” to [Always On].
3. Click [OK] to close the “Power Options Properties” window.

Mac OS X

This setting is not available on certain versions of Mac OS X.

1. Open “System Preferences” and click [Energy Saver].
2. Click [Options].
3. Set “Processor Performance” to [Highest].

Reinstalling the Driver

If you experience problems installing the driver, use the following procedure and reinstall the driver.

1. Delete the UM-ONE’s driver.
2. Install the driver again as described in “Driver Installation” (p. 9).

Deleting the Driver

If the computer does not detect the UM-ONE correctly, use the following procedure to delete the driver, and then install the driver again as described in “Driver Installation” (p. 9).

Windows

1. Start up the computer without the UM-ONE connected.
Disconnect all USB cables other than those for a USB keyboard and/or USB mouse (if used).
2. Log on to the computer with a user account that has administrator privileges.
3. Insert the included CD-ROM into the computer’s CD-ROM drive.
4. Double-click the [Uninstal] icon in [Driver] folder on the included CD-ROM.
5. When a confirmation screen regarding user account control appears, click [Yes] or [Continue].
6. When “The installed UM-ONE driver will be uninstalled.” appears, click [OK].

Troubleshooting

If other messages appear, follow the instructions on the screen.

- 7. When “Uninstallation was completed.” appears, click [OK] and restart the computer.**

Mac OS X

- 1. Start up the computer without the UM-ONE connected.**

Disconnect all USB cables other than those for a USB keyboard and/or USB mouse (if used).

- 2. Insert the included CD-ROM into the computer’s CD-ROM drive.**
- 3. Double-click the [Uninstaller] in [Driver] folder on the included CD-ROM.**
- 4. When “This uninstalls UM-ONE driver from this Macintosh.” appears, click [Uninstall].**
If other messages appear, follow the instructions on the screen.
- 5. When “Are you sure you want to uninstall the driver?” appears, click [OK].**
- 6. The authentication dialog box or the message “Uninstaller requires that you type your password” will appear.**
Enter the password and click [OK].
- 7. When “Uninstallation is completed.” appears, click [Restart] and restart the computer.**
It may take some time for the computer to restart.

Lightening the MIDI Load (Windows)

The MIDI load can be lightened in the UM-ONE driver setting dialog box.

- 1. Exit all programs that are using the UM-ONE.**
- 2. Open the “Control Panel” and set the display mode as follows.**
 - Windows 8/Windows 7: Icon view
 - Windows Vista/Windows XP: Classic view
- 3. Double-click the UM-ONE icon.**
The “UM-ONE Driver Settings” dialog box will appear.
- 4. Place a check in the [Lighten Load] check box.**
- 5. Click [OK].**

Main Specifications

UM-ONE: USB MIDI Interface

Connectors	MIDI IN Cable (CONNECT TO MIDI OUT) x 1 (16 MIDI Channels)
	MIDI OUT Cable (CONNECT TO MIDI IN) x 1 (16 MIDI Channels)
	USB Cable
Indicators	USB Indicator
	MIDI IN Indicator
	MIDI OUT Indicator
Power Supply	Supplied from the computer
Current Draw	70 mA
Dimensions	60.2 (W) x 30 (D) x 14 (H) mm
	2-3/8 x 1-3/16 x 9/16 inches (main unit only)
Weight	100 g/4 oz (main unit only)
Accessories	Owner's Manual
	CD-ROM
	(If any accessories are missing, please contact the place of purchase.)

* In the interest of product improvement, the specifications, appearance, and/or contents of this unit are subject to change without prior notice.

For EU Countries



- UK** This symbol indicates that in EU countries, this product must be collected separately from household waste, as defined in each region. Products bearing this symbol must not be discarded together with household waste.
- DE** Dieses Symbol bedeutet, dass dieses Produkt in EU-Ländern getrennt vom Hausmüll gesammelt werden muss gemäß den regionalen Bestimmungen. Mit diesem Symbol gekennzeichnete Produkte dürfen nicht zusammen mit den Hausmüll entsorgt werden.
- FR** Ce symbole indique que dans les pays de l'Union européenne, ce produit doit être collecté séparément des ordures ménagères selon les directives en vigueur dans chacun de ces pays. Les produits portant ce symbole ne doivent pas être mis au rebut avec les ordures ménagères.
- IT** Questo simbolo indica che nei paesi della Comunità europea questo prodotto deve essere smaltito separatamente dai normali rifiuti domestici, secondo la legislazione in vigore in ciascun paese. I prodotti che riportano questo simbolo non devono essere smaltiti insieme ai rifiuti domestici. Ai sensi dell'art. 13 del D.Lgs. 25 luglio 2005 n. 151.
- ES** Este símbolo indica que en los países de la Unión Europea este producto debe recogerse aparte de los residuos domésticos, tal como esté regulado en cada zona. Los productos con este símbolo no se deben depositar con los residuos domésticos.
- PT** Este símbolo indica que nos países da UE, a recolha deste produto deverá ser feita separadamente do lixo doméstico, de acordo com os regulamentos de cada região. Os produtos que apresentem este símbolo não deverão ser eliminados juntamente com o lixo doméstico.
- NL** Dit symbool geeft aan dat in landen van de EU dit product gescheiden van huishoudelijk afval moet worden aangeboden, zoals bepaald per gemeente of regio. Producten die van dit symbool zijn voorzien, mogen niet samen met huishoudelijk afval worden verwijderd.
- DK** Dette symbol angiver, at i EU-lande skal dette produkt opsamles adskilt fra husholdningsaffald, som defineret i hver enkelt region. Produkter med dette symbol må ikke smides ud sammen med husholdningsaffald.
- NO** Dette symbolet indikerer at produktet må behandles som spesialavfall i EU-land, iht. til retningslinjer for den enkelte regionen, og ikke kastes sammen med vanlig husholdningsavfall. Produkter som er merket med dette symbolet, må ikke kastes sammen med vanlig husholdningsavfall.

- SE** Symbolen anger att i EU-länder måste den här produkten kasseras separat från hushållsavfall, i enlighet med varje regions bestämmelser. Produkter med den här symbolen får inte kasseras tillsammans med hushållsavfall.
- FI** Tämä merkintä ilmaisee, että tuote on EU-maissa kerättävä erillään kotitalousjätteistä kunkin alueen voimassa olevien määräysten mukaisesti. Tällä merkinnällä varustettuja tuotteita ei saa hävittää kotitalousjätteen mukana.
- HU** Ez a szimbólum azt jelenti, hogy az Európai Unióban ezt a terméket a háztartási hulladéktól elkülönítve, az adott régióban érvényes szabályozás szerint kell gyűjteni. Az ezzel a szimbólummal ellátott termékeket nem szabad a háztartási hulladék közé dobni.
- PL** Symbol oznacza, że zgodnie z regulacjami w odpowiednim regionie, w krajach UE produktu nie należy wyrzucać z odpadami domowymi. Produktów opatrzonych tym symbolem nie można utylizować razem z odpadami domowymi.
- CZ** Tento symbol udává, že v zemích EU musí být tento výrobek sbírán odděleně od domácího odpadu, jak je určeno pro každý region. Výrobky nesoucí tento symbol se nesmí vyhazovat spolu s domácími odpady.
- SK** Tento symbol vyjadruje, že v krajinách EÚ sa musí zber tohto produktu vykonávať oddelene od domového odpadu, podľa nariadení platných v konkrétnej krajine. Produkty s týmto symbolom sa nesmú vyhazovať spolu s domovým odpadom.
- EE** See sümbol näitab, et EL-i maades tuleb see toode olemprügist eraldi koguda, nii nagu on iga piirkonnas määratletud. Selle sümboliga märgitud tooteid ei tohi ära visata koos olemprügiga.
- LT** Šis simbolis rodo, kad ES šalyse šis produktas turi būti surenkamas atskirai nuo buitinio atliekų, kaip nustatyta kiekvienoje regione. Šiuo simboliu paženkintų produktai neturi būti išmetami kartu su buitiniems atliekomis.
- LV** Šis simbols norāda, ka ES valstīs šo produktu jāievā atsevišķi no mājsaimniecības atkritumiem, kā noteikts katrā reģionā. Produkts ar šo simbolu nedrīkst izmest kopā ar mājsaimniecības atkritumiem.
- SI** Ta simbol označuje, da je treba proizvođ v državah EU zbirati ločeno od gospodinjjskih odpadkov, tako kot je določeno v vsaki regiji. Proizvoda s tem znakom ni dovoljeno odlagati skupaj z gospodinjjskimi odpadki.
- GR** Το σύμβολο αυτό υποδηλώνει ότι στις χώρες της Ε.Ε. το συγκεκριμένο προϊόν πρέπει να συλλέγεται χωριστά από τα απόβλητα οικιακά απορρίμματα, σύμφωνα με όσα προβλέπονται σε κάθε περιοχή. Τα προϊόντα που φέρουν το συγκεκριμένο σύμβολο δεν πρέπει να απορρίπτονται μαζί με τα οικιακά απορρίμματα.

For China

有关产品中所含有害物质的说明

本资料就本公司产品中所含的特定有害物质及其安全性予以说明。

本资料适用于 2007 年 3 月 1 日以后本公司所制造的产品。

环保使用期限



此标志适用于在中国国内销售的电子信息产品，表示环保使用期限的年数。所谓环保使用期限是指在自制造日起的规定期限内，产品中所含的有害物质不致引起环境污染，不会对人体、财产造成严重的不良影响。

环保使用期限仅在遵照产品使用说明书，正确使用产品的条件下才有效。

不当的使用，将会导致有害物质泄漏的危险。

产品中有毒有害物质或元素的名称及含量

部件名称	有毒有害物质或元素					
	铅(Pb)	汞(Hg)	镉(Cd)	六价铬(Cr(VI))	多溴联苯(PBB)	多溴二苯醚(PBDE)
外壳(壳体)	×	○	○	○	○	○
电子部件(印刷电路板等)	×	○	×	○	○	○
附件(电源线、交流适配器等)	×	○	○	○	○	○

○：表示该有毒有害物质在该部件所有均质材料中的含量均在 SJ/T11363-2006 标准规定的限量要求以下。

×：表示该有毒有害物质至少在该部件的某一均质材料中的含量超出 SJ/T11363-2006 标准规定的限量要求。

因根据现有的技术水平，还没有什么物质能够代替它。

For the USA

DECLARATION OF CONFORMITY Compliance Information Statement

Model Name : UM-ONE
Type of Equipment : USB MIDI Interface
Responsible Party : Roland Corporation U.S.
Address : 5100 S. Eastman Avenue, Los Angeles, CA 90040-2938
Telephone : (323) 890-3700



For EU Countries

This product complies with the requirements of EMC Directive 2004/108/EC.

For the USA

FEDERAL COMMUNICATIONS COMMISSION RADIO FREQUENCY INTERFERENCE STATEMENT

This equipment has been tested and found to comply with the limits for a Class B digital device, pursuant to Part 15 of the FCC Rules. These limits are designed to provide reasonable protection against harmful interference in a residential installation. This equipment generates, uses, and can radiate radio frequency energy and, if not installed and used in accordance with the instructions, may cause harmful interference to radio communications. However, there is no guarantee that interference will not occur in a particular installation. If this equipment does cause harmful interference to radio or television reception, which can be determined by turning the equipment off and on, the user is encouraged to try to correct the interference by one or more of the following measures:

- Reorient or relocate the receiving antenna.
- Increase the separation between the equipment and receiver.
- Connect the equipment into an outlet on a circuit different from that to which the receiver is connected.
- Consult the dealer or an experienced radio/TV technician for help.

This device complies with Part 15 of the FCC Rules. Operation is subject to the following two conditions:

- (1) this device may not cause harmful interference, and
- (2) this device must accept any interference received, including interference that may cause undesired operation.

Unauthorized changes or modification to this system can void the users authority to operate this equipment.
This equipment requires shielded interface cables in order to meet FCC class B Limit.

For Canada

NOTICE

This Class B digital apparatus meets all requirements of the Canadian Interference-Causing Equipment Regulations.

AVIS

Cet appareil numérique de la classe B respecte toutes les exigences du Règlement sur le matériel brouilleur du Canada.

For C.A. US (Proposition 65)

WARNING

This product contains chemicals known to cause cancer, birth defects and other reproductive harm, including lead.

Information

When you need repair service, call your nearest Roland Service Center or authorized Roland distributor in your country as shown below.

AFRICA

EGYPT

Al Fanny Trading Office
9, EBN Hagar Al Askalani Street,
ARD El Golf, Heliopolis,
Cairo 11341, EGYPT
TEL: (022)-417-1828

REUNION

MARCEL FO-YAM Sarl
25 Rue Jules Hermann,
Chaudron - BP79 97 491
St Etienne Cedex,
REUNION ISLAND
TEL: (0262)-218-429

SOUTH AFRICA

Poul Bothner(PTY)Ltd.
Royal Cape Park, Unit 24
Londonderry Road, Ottery 7800
Cape Town, SOUTH AFRICA
TEL: (021) 799 4900

ASIA

CHINA

China Shanghai Electronics Co.,Ltd.
Shanghai 200900, CHINA
TEL: (021) 5580-0800

Roland Shanghai Electronics Co.,Ltd. (BEIJING OFFICE)

3F, Soluxe Fortune Building
63 West Dawang Road, Chaoyang
District, Beijing, CHINA
TEL: (010) 5966-2565

HONG KONG

Tom Lee Music
11/F Silvercord Tower 1
30 Canton Rd
Tsimshatsui, Kowloon,
HONG KONG
TEL: 852-273-7688

Parsons Music Ltd.

8th Floor, Railway Plaza, 39
Chatham Road North, T.S.T.,
Kowloon, HONG KONG
TEL: 852-2333-1863

INDIA

Riviera Digitec (India) Pvt. Ltd.
411, Nirman Kendra Mahalaxmi
Flats Compound Off, Dr. Edwin
Moses Road, Mumbai-400011,
INDIA
TEL: (022) 2493 9051

INDONESIA

PT. Cita Intrama
Ruko Gaden Shopping Arcade
Unit 8 C.R. Podomoro City
Jlletend, S.P. Manan Kaw.28
Jakarta Barat 11470, INDONESIA
TEL: (021) 5698-5519/5520

KAZAKHSTAN

Altatay Dyubyrskiy
141 Abayli-Khan ave, 1st floor,
050000 Almaty, KAZAKHSTAN
TEL: (727) 2725477
FAX: (727) 2720730

KOREA

Cosmos Corporation
1461-9, Sechoe-Dong,
Sechoe-Ku, Seoul, KOREA
TEL: (02) 3486-8855

MALAYSIA/ SINGAPORE

Roland Asia Pacific Sdn. Bhd.
45-1, Block C2, Jalan P1/139,
Dataran Prima, 47301 Petaling
Jaya, Selangor, MALAYSIA
TEL: (03) 7805-3263

PHILIPPINES

G. Yupangco & Co., Inc.
339 Gil J. Puyat Avenue,
Makati, Metro Manila 1200,
PHILIPPINES
TEL: (02) 899 9801

TAIWAN

ROLAND TAIWAN ENTERPRISE CO., LTD.
9F-5, No. 112 Chung Shun
Road, South Road Sec. 2 Taipei 104,
TAIWAN R.O.C.
TEL: (02) 2561 3339

THAILAND

Theera Music Co., Ltd.
100-108 Soi Veng Nakhomkasem,
New Road, Sumpantawong,
Bangkok 10100, THAILAND
TEL: (02) 224-8821

VIET NAM

VIET THUONG CORPORATION
386 CACH MANG THANG TAM ST.
DIST.3, HO CHI MINH CITY,
VIET NAM
TEL: (08) 9316540

OCEANIA

AUSTRALIA/ NEW ZEALAND

Roland Corporation Australia Pty.,Ltd.
38 Campbell Avenue,
Melbourne VIC 3099,
AUSTRALIA
TEL: (02) 9882 8266

For New Zealand
One Why West, NSW 2099,
AUSTRALIA
TEL: (09) 3098 715

CENTRAL/LATIN AMERICA

ARGENTINA

Instruments Musicales S.A.
Av.Santa Fe 2055
1123 Buenos Aires, ARGENTINA
TEL: (011) 4508-2700

BARBADOS

A&B Music Supplies LTD
12 Webster Industrial Park
Wildes, St.Michael, BARBADOS
TEL: (246) 430-1100

BRAZIL

Roland Brasil Ltda.
Rua San Jose, 211
Parque Industrial San Jose
Cotia - Sao Paulo - SP, BRAZIL
TEL: (011) 4615 5666

CHILE

Comercial Fancy II S.A.
Rut.: 96.919.420-1
Natalie Cox #379, 4th floor
Santiago - Centro, CHILE
TEL: (02) 384-2180

COLOMBIA

Centro Musical Ltda.
Cra 43 B No 25 41 Rododelega 9
Medellin, COLOMBIA
TEL: (574) 3812529

COSTA RICA

JUAN Banchach Instrumentos Musicales
Ave. 1, Calle 11, Apartado 10237,
San Jose, COSTA RICA
TEL: 258-0211

CURACAO

Zelandia Music Center Inc.
Orionweg 3
Curacao, Netherland Antilles
TEL: (305) 5928866

DOMINICAN REPUBLIC

Instrumentos Fernando Giraldez
Calle Roberto Pastoriza #325
Sanchez Naco
Santo Domingo, DOMINICAN REPUBLIC
TEL: (809) 683 0305

ECUADOR

Mas Musica
Rumichacha 922 y Zaruma
Guayaquil - ECUADOR
TEL: (593)-42 203264

EL SALVADOR

OMNI MUSIC
75 Avenida Norte y Final Alameda
Juan Pablo II,
Edificio No.4010 San Salvador,
EL SALVADOR
TEL: 262-0778

GUATEMALA

Casa Instrumental
Calzada Roosevelt 34-01, zona 11
Ciudad de Guatemala,
GUATEMALA
TEL: (502) 599-2888

HONDURAS

Almacén Pajaro Azul S.A. de C.V.
80 Paz Barahona
3 Ave. 11 Calle S.O
San Pedro Sula, HONDURAS
TEL: (504) 553-2029

MARTINIQUE

Musique & Son
Zi Les Mangon
97323 Le Lamentin,
MARTINIQUE FWI,
TEL: 596 596 426860

MEXICO

Casa Veerkamp, s.a. de c.v.
Av. Toluca No. 323, Col. Olivar
de los Padres 01780 Mexico D.F.,
MEXICO
TEL: (55) 5668-6699

NICARAGUA

Bansbach Instrumentos Musicales Nicaragua
Alameda O'Este Calle Principal
de la Farmacia Sta.Avenida
1 Cuadra al Lago #503
Managua, NICARAGUA
TEL: (505) 277-2557

PANAMA

SUPRO MUNDIAL, S.A.
Boulevard Andrews, Albrook,
Panama City, REP. DE PANAMA
TEL: 315-0101

PARAGUAY

Distribuidora De Instrumentos Musicales
J.E. Olary y ESQ. Manduira
Avenida, PARAGUAY
TEL: (595) 21 492147

PERU

Audioton Distribuciones Musicales SAC
Av. 2 de Mayo 562
Miraflores
Lima, PERU
TEL: (5111) 447-0691

TRINIDAD

AMR Ltd
Ground Floor
Maritime Plaza
Bartolara TRINIDAD W.I.
TEL: (868) 638 6385

URUGUAY

Todo Musica S.A.
Francisco Acuna de Figueroa
1771
C.P.: 11.800
Montevideo, URUGUAY
TEL: (02) 924-2335

VENEZUELA

Instrumentos Musicales Allegro,C.A.
Av.Jas Industrias edf.Guitar import
#7 zona Industrial de Turumo
Caracas, VENEZUELA
TEL: (212) 244-1122

EUROPE

BELGIUM/FRANCE/ HOLLAND/ LUXEMBOURG

Roland Central Europe N.V.
Houtstraat 3, B-2260, Oevel
(Westerlo) BELGIUM
TEL: (014) 575811

BOSNIA AND HERZEGOVINA

Mix-AP Music
78000 Benja Luka, Veszina
Madlen 3
BOSNIA AND HERZEGOVINA
TEL: 65 403 168

CROATIA

ART-CENTAR
Degenova 3,
HR - 10000 Zagreb, CROATIA
TEL: (1) 466 8493

CZECH REP.

CZECH REPUBLIC DISTRIBUTOR s.r.o
Pod Bani 8
180 00 Praha 8, CZECH REP.
TEL: 266 312 357

DENMARK/ESTONIA/ LATVIA/LITHUANIA

Roland Scandinavia A/S
Pavoi Gade 7, 23-25
DK-2100 Copenhagen,
DENMARK
TEL: 39166222

FINLAND

Roland Scandinavia As, Fillal Finland
Vanha Nurmiarjante 62
01670 Vantaa, FINLAND
TEL: (09) 9 68 24 020

GERMANY/AUSTRIA

ROLAND Germany GmbH.
Adam-Otto-Strasse 4, 64569
Nauheim, GERMANY
TEL: 6152 95546-00

GREECE/CYPRUS

STOLLAS S.A.
Music Sound Light
155, New National Road
Patras 26442, GREECE
TEL: 2610 435400

HUNGARY/ROMANIA

Roland East Europe Ltd.
2045, Törökbalint, FSD Park 3. ép.
Budapest, HUNGARY
TEL: (23) 511 011

IRELAND

Roland Ireland
E2 Calmout Park, Calmout
Avenue, Dublin 12,
Republic of IRELAND
TEL: (01) 4294444

ITALY

Roland Italy S.p.A.
Viale delle Industrie 8,
20020 Arese, Milano, ITALY
TEL: (02) 937-78300

MACEDONIA

MR MUZIK
Aleksio Demnievski-Bauman 9-3,
1400 Veles, MACEDONIA
TEL: 76 264 558

MONTENEGRO

MAX-AP
Primo, Kamenovo bb., 86000
Budva, MONTENEGRO
TEL: 68 050 112

NORWAY

Roland Scandinavia Avd.
Kontor Norge
Lilleakerveien 2 Postboks 95
Lilleaker N-0216 Oslo,
NORWAY
TEL: 2273 0074

POLAND

ROLAND POLSKA SP. Z O.O.
ul. Ksy Grodzkiej 16B
03-289 Warszawa, POLAND
TEL: (022) 678 9512

PORTUGAL

Roland Systems Group EMEA, S.L.
Branch Office Porto
Edificio Tower Plaza
Routunda Eng. Edgar Cardoso 23,
4400-676 Vila Nova de Gaia,
PORTUGAL
TEL: (+351) 22 608 00 60

RUSSIA

Roland Music LLC
Dorozhnaya ul.3,korp.6
117 545 Moscow, RUSSIA
TEL: (495) 981-4967

SERBIA

Musica AP
Srbijka br. 5, XS - 24413 PALIC,
SERBIA
TEL: (0) 24 539 395

SLOVAKIA

DAN Acoustic s.r.o.
Povazska 18,
SK - 940 01 Nové Zámky,
SLOVAKIA
TEL: (0353) 6424 330

SPAIN

Roland Systems Group EMEA, S.L.
Paseo Garcia Jaria, 33-25
08005 Barcelona, SPAIN
TEL: 93 493 91 00

SWEDEN

Roland Scandinavia A/S
SWEDISH SALES OFFICE
Märbackagatan 31, 4 tr.
SE-123 43 Farsta, SWEDEN
TEL: (08) 8 683 04 30

SWITZERLAND

ROLAND Switzerland AG
Landstrasse 5, Postfach,
CH-4452 Ningen, SWITZERLAND
TEL: (061) 975-9987

UKRAINE

EURHYTHMICS Ltd.
PO.Box: 37-a,
Nedecy Str. 30,
UA - 89600 Mukachevo, UKRAINE
TEL: (0331) 4114-40

UNITED KINGDOM

Roland (U.K.) Ltd.
Atlantic Close, SWANSEA SA7 9FJ,
UNITED KINGDOM
TEL: (01792) 702701

MIDDLE EAST

BAHRAIN

Moon Stores
No.1231/1249 Rumaytha
Building Road 3931,
Manama 339, BAHRAIN
TEL: 17 813 942

IRAN

MOCO INC.
Jadeh Harkoush Karaj (K-9),
Nakhe Zarin Ave,
Jalal Street, Reza Alley No.4
Tehran 1389716791, IRAN
TEL: (021)-44545370-5

ISRAEL

HaIlit P. Greenspoon & Sons Ltd.
8 Retziel Ha'alia Hashina St.
Tel-Aviv-Yafo ISRAEL
TEL: (03) 6823666

JORDAN

MUSIC HOUSE CO. LTD.
FREDDY FOR MUSIC
P.O. Box 922846
Amman 11192, JORDAN
TEL: (06) 5692696

KUWAIT

EASA HUSAIN AL-YOUSIFI & SONS CO.
Al-Yousifi Service Center
PO.Box 126 (Safat) 13002,
KUWAIT
TEL: 00 965 802929

LEBANON

Chahine S.A.L.
George Zeidan St., Chahine Bldg.,
4-4
Beirut, LEBANON
TEL: (01) 20-1441

OMAN

TALENTZ CENTRE L.L.C.
Malatan House No.1
Al Noor Street, Ruwi
SULTANATE OF OMAN
TEL: 2478 3443

QATAR

AL-EMADIT TRADING & CONTRACTING CO.
PO. Box 62, Doha, QATAR
TEL: 4423-554

SAUDI ARABIA

Adawiah Universal Electronics APL
Behind Pizza Inn
Prinze Prince Street
Adawiah Building,
PO BOX 2154,
Al Khobar 31952,
SAUDI ARABIA
TEL: (03) 8643601

SYRIA

Technical Light & Sound Center
PO Box 13520 Bldg No.49
Khaled Abn Alwaleed St.,
Damascus, SYRIA
TEL: (011) 223-5384

TURKEY

ZUHAI DIS TICARET A.S.
Galip Dede Cad. No.33
Beyoglu, Istanbul, TURKEY
TEL: (0212) 249 85 10

U.A.E.

Adawiah Universal Electronics APL
Omar bin alkhattab street, fish
road north, nayeef area, deira,
Dubai, U.A.E.
TEL: (04) 2340442

NORTH AMERICA

CANADA

Roland Canada Ltd.
(Head Office)
5480 Parkwood Way Richmond B.
C. V6V 2M4, CANADA
TEL: (604) 270 6626

Roland Canada Ltd. (Toronto Office)

1730 Admiral Boulevard
Mississauga ON L5M 2N6,
CANADA
TEL: (905) 362 9707

IRAN

Roland Corporation U.S.
5100 S. Eastern Avenue
Los Angeles, CA 90040-2938,
U.S.A.
TEL: (323) 890 3700

ISRAEL

HaIlit P. Greenspoon & Sons Ltd.
8 Retziel Ha'alia Hashina St.
Tel-Aviv-Yafo ISRAEL
TEL: (03) 6823666

JORDAN

MUSIC HOUSE CO. LTD.
FREDDY FOR MUSIC
P.O. Box 922846
Amman 11192, JORDAN
TEL: (06) 5692696

KUWAIT

EASA HUSAIN AL-YOUSIFI & SONS CO.
Al-Yousifi Service Center
PO.Box 126 (Safat) 13002,
KUWAIT
TEL: 00 965 802929

LEBANON

Chahine S.A.L.
George Zeidan St., Chahine Bldg.,
4-4
Beirut, LEBANON
TEL: (01) 20-1441

OMAN

TALENTZ CENTRE L.L.C.
Malatan House No.1
Al Noor Street, Ruwi
SULTANATE OF OMAN
TEL: 2478 3443

QATAR

AL-EMADIT TRADING & CONTRACTING CO.
PO. Box 62, Doha, QATAR
TEL: 4423-554

SAUDI ARABIA

Adawiah Universal Electronics APL
Behind Pizza Inn
Prinze Prince Street
Adawiah Building,
PO BOX 2154,
Al Khobar 31952,
SAUDI ARABIA
TEL: (03) 8643601

SYRIA

Technical Light & Sound Center
PO Box 13520