

# Owner's Manual

## Power Strips with Surge Suppression

**Models: SS240806, SS3612, SS361220, SS480806,  
SS7415-15 and SS7619-15**

SS-Series Power Strips have multiple AC outlets and provide surge suppression to connected equipment. They feature a green LED that lights when surge suppression components are operating.

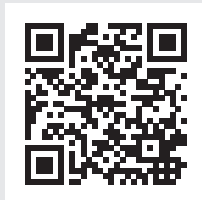
Este manual esta disponible en español en la página de Tripp Lite: [www.tripplite.com](http://www.tripplite.com)

Ce manuel est disponible en français sur le site Web de Tripp Lite : [www.tripplite.com](http://www.tripplite.com)

### PROTECT YOUR INVESTMENT!

Register your product for quicker service  
and ultimate peace of mind.

You could also win an  
ISOBAR6ULTRA surge protector—  
a \$50 value!



[www.tripplite.com/warranty](http://www.tripplite.com/warranty)



1111 W. 35th Street, Chicago, IL 60609 USA • [www.tripplite.com/support](http://www.tripplite.com/support)

Copyright © 2014 Tripp Lite. All rights reserved.

## Important Safety Instructions



### SAVE THESE INSTRUCTIONS

- DO NOT connect the power strip to an ungrounded outlet.
- DO NOT use the power strip with 2-wire extension cords or adapters.
- This power strip is designed for indoor use only. Install the power strip away from heat-emitting appliances such as radiators or heat registers.
- Do not install where excessive moisture is present.
- Do not plug extension cords into the power strip.
- Never install electrical, telephone, network or coaxial wiring during a lightning storm.
- Do not drill into any part of the housing or open the housing for any reason. There are no user-serviceable parts inside.

## Equipment Connection

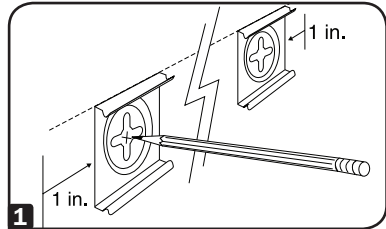
Plug your equipment into the Power Strip's AC receptacles. DO NOT plug in equipment that draws more total amps than your Power Strip's amperage rating (see label on Power Strip for amperage rating), or you will trip the circuit breaker. If the circuit breaker trips, remove overload and depress breaker to reset. Leave enough clearance at the end of the Power Strip to allow the circuit breaker to operate normally.

**Note:** Select models with a power switch feature a protective switch cover. To access the switch, flip open the attached cover.

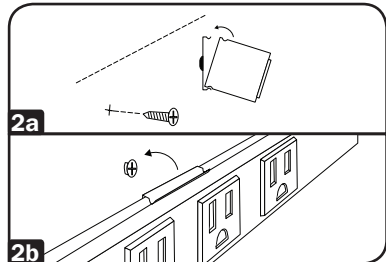
## Wall Mounting

All Power Strip models feature clips for horizontal or vertical mounting on a variety of surfaces. The user must supply other mounting hardware (screws, etc.) and determine its suitability for use with the chosen mounting surface.

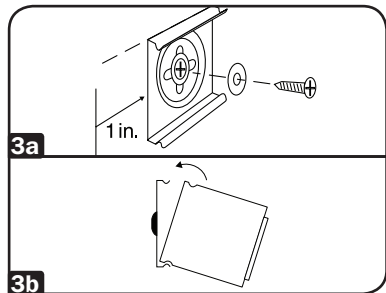
**1** Mark a straight horizontal or vertical line where you want to mount the Power Strip. At each end of the line, mark where the edges of the Power Strip will be located. Place a mounting clip on the mounting surface 1" in from these edges and mark where the screws must be driven into the wall. For strips longer than 48" (120 cm), also mark a screw hole for a third mounting clip midway between the other two.



**2** **Keyhole Mounting:** Drive #8 screws directly into the mounting surface. Snap the mounting clips onto the Power Strip **2a**, then hang the Power Strip on the screws by the keyhole slots on its mounting clips **2b**.



**3** **Clip Mounting:** Drive #10 screws through washers, through the centers of the mounting clips and into the mounting surface **3a**. Place the Power Strip inside one edge of the mounting clips, then snap the Power Strip into place **3b**.



## Specifications

Model	Amperage Rating	Outlet Qty. x Type	AC Suppression Rating	Input Plug	Cord Length	Overall Length	Breaker
<b>SS240806</b>	15A	8 x 5-15R	1050 joules	5-15P	6 ft.	24 in.	15A
<b>SS3612</b>	15A	12 x 5-15R	1050 joules	5-15P	15 ft.	36 in.	15A
<b>SS361220</b>	20A	2 x 5-20R, 10 x 5-15R	1650 joules	5-20P	15 ft.	36 in.	20A
<b>SS480806</b>	15A	8 x 5-15R	1650 joules	5-15P	6 ft.	48 in.	15A
<b>SS7415-15</b>	15A	16 x 5-15R	1650 joules	5-15P	15 ft.	48 in.	15A
<b>SS7619-15</b>	15A	24 x 5-15R	1650 joules	5-15P	15 ft.	72 in.	15A

## Lifetime Limited Warranty

Seller warrants this product, if used in accordance with all applicable instructions, to be free from original defects in material and workmanship for its lifetime. If the product should prove defective in material or workmanship within that period, Seller will repair or replace the product, in its sole discretion. Service under this Warranty can only be obtained by your delivering or shipping the product (with all shipping or delivery charges prepaid) to: TRIPP LITE; 1111 W. 35th Street, Chicago, IL 60609. Seller will pay return shipping charges. Visit [www.tripplite.com/support](http://www.tripplite.com/support) before sending any equipment back for repair.

THIS WARRANTY DOES NOT APPLY TO NORMAL WEAR OR TO DAMAGE RESULTING FROM ACCIDENT, MISUSE, ABUSE OR NEGLIGENCE. SELLER MAKES NO EXPRESS WARRANTIES OTHER THAN THE WARRANTY EXPRESSLY SET FORTH HEREIN. EXCEPT TO THE EXTENT PROHIBITED BY APPLICABLE LAW, ALL IMPLIED WARRANTIES, INCLUDING ALL WARRANTIES OF MERCHANTABILITY OR FITNESS, ARE LIMITED IN DURATION TO THE WARRANTY PERIOD SET FORTH ABOVE; AND THIS WARRANTY EXPRESSLY EXCLUDES ALL INCIDENTAL AND CONSEQUENTIAL DAMAGES. (Some states do not allow limitations on how long an implied warranty lasts, and some states do not allow the exclusion or limitation of incidental or consequential damages, so the above limitations or exclusions may not apply to you. This Warranty gives you specific legal rights, and you may have other rights which vary from jurisdiction to jurisdiction.)

WARNING: The individual user should take care to determine prior to use whether this device is suitable, adequate or safe for the use intended. Since individual applications are subject to great variation, the manufacturer makes no representation or warranty as to the suitability or fitness of these devices for any specific application.

### PRODUCT REGISTRATION

Visit [www.tripplite.com/warranty](http://www.tripplite.com/warranty) today to register your new Tripp Lite product. You'll be automatically entered into a drawing for a chance to win a FREE Tripp Lite product!\*

\* No purchase necessary. Void where prohibited. Some restrictions apply. See website for details.

### Regulatory Compliance Identification Numbers

For the purpose of regulatory compliance certifications and identification, your Tripp Lite product has been assigned a unique series number. The series number can be found on the product nameplate label, along with all required approval markings and information. When requesting compliance information for this product, always refer to the series number. The series number should not be confused with the marketing name or model number of the product.

Tripp Lite follows a policy of continuous improvement. Product specifications are subject to change without notice.



1111 W. 35th Street, Chicago, IL 60609 USA • [www.tripplite.com/support](http://www.tripplite.com/support)