

WARRANTY REGISTRATION

Visit www.ultimatesupport.com for a quick and convenient process for registering your new Ultimate Support product. Warranty Registration and Proof of Purchase are required for warranty fulfillment. Full Limited Lifetime Warranty and Ultimate Protection Plus Premium Service and Support Plan details are available online under Music Gear & Instrument Stands / Customer Support.

ULTIMATE SUPPORT® LIMITED LIFETIME WARRANTY

Ultimate Support products are constructed of the finest materials and designed and tested to stand up to the demanding lifestyle of the touring musician, gigging DJ, and working sound engineer. In the unlikely event that a product should fail due to manufacturing defect, Ultimate Support is pleased to repair or replace that product.

Please see www.ultimatesupport.com for more information.

This warranty applies to the original purchaser only and does not include damage to the product resulting from normal wear and tear, accident, misuse, improper installation or operation, or unauthorized repair or alterations.

ULTIMATE SUPPORT®

THE STRENGTH OF INNOVATION® ▲

Product Manual
for Ultimate Support

MS MKII SERIES

MS-100R

ITEM #17381

MS-100B

ITEM #17451

MS-90/45R

ITEM #17380

MS-90/45B

ITEM #17450

MS-90/36R

ITEM #17430

MS-90/36B

ITEM #17449

MS-80

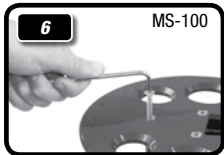
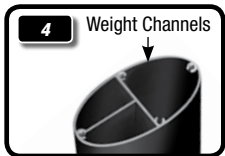
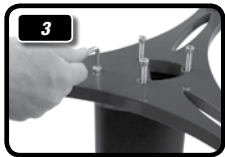
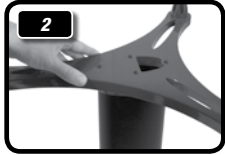
ITEM #17379



Revision 1.05.30.11 . Product Manual Item #MS-MKII-1M

ULTIMATE SUPPORT® LIMITED LIFETIME WARRANTY

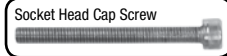
Column Assembly (MS-100 and MS-90)



1. Place rubber coupler on aluminum column. When placed properly, the larger weight channel will be covered and the two cable channels will be visible.

2. With the feet caps facing up, set bottom base on top of rubber coupler. When set properly, the larger weight channel will be completely covered and the two cable channels will still be visible.

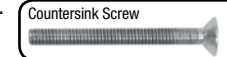
3. Hand tighten the four socket head cap screws in base. Use provided 5mm allen wrench to finish tightening socket head cap screws.



4. Turn column upside right. (If desired, add sand or shot to the larger weight channel at this point.)

5. Place second rubber coupler on the top aluminum column. When placed properly, the larger weight channel will be covered and the two cable channels will be visible.

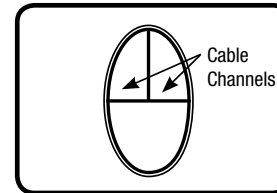
6. Set top base on column w/cable channels still visible. Tighten the four countersink screws in base using provided 4mm allen wrench.



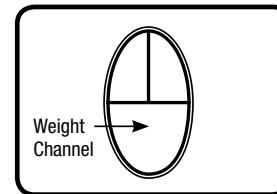
7. MS-100 ONLY: Place adjustable monitor platform on top base, making sure feet spikes are securely set in indented holes before placing studio monitors on top of stand.

Column Channels (MS-100 and MS-90)

Top View of Column



Top View of Column

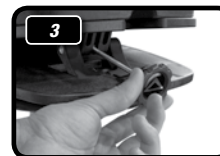


The column of the MS-100 and MS-90 all feature three channels. Two of the channels are used for cables while the third, larger channel is for filling with sand or shot.

It is best to keep audio and power cables separate from each other, so run your audio cable down one channel and your power cable down the other.

Fill the weight channel with sand or shot after point 4 in the COLUMN ASSEMBLY section of instructions (see left). This weight adds mass and eliminates sonic resonance.

Adjustable Platform Setup (MS-100 and MS-80)



1. **AXIS ADJUSTMENT (MS-100):** Instead of moving the entire stand, you can adjust the axis of the platform by moving it in a circular motion clockwise or counterclockwise until reaching the desired position. NOTE: Be sure all four spikes are securely seated in indented holes on base before placing studio monitors on top of stand.

2. **ANGLE UP OR DOWN:** Your studio monitors can angle up (2.1) or down (2.2) depending on your situation. Please choose and set before final angle adjustment.

3. **ANGLE ADJUSTMENT:** Turn knob clockwise or counter clockwise for precise angle adjustment.



FOOTCAPS: Leave rubber foot caps on for placement on hard wood floors or other such surfaces. Take them off and use spikes for setting on carpet.