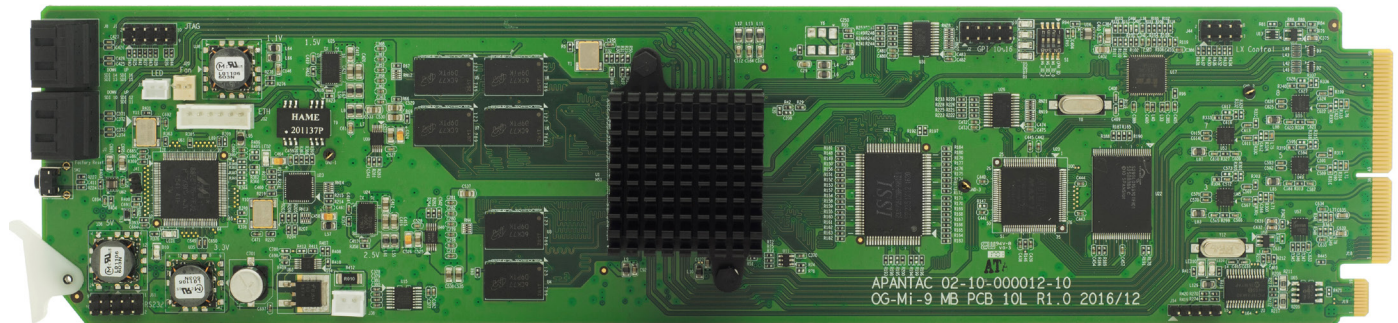


openGear

OG-Mi-16#

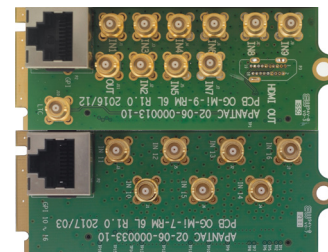
16 x 2 SDI Multiviewer Card with HDMI and SDI Output (dual outputs)



OG-Mi-16#-MB

Key Features

- OGX/3.0 card-based form factor
- Low latency - single frame processing delay
- 16 x auto-detect 3G (Level A/B)/HD/SD-SDI inputs
- 2 independent outputs: 1 x HDMI and 1 x SDI
- Low power consumption - 20W
- Windows can be sized and moved freely
- Decode up to 16 embedded audio per SDI input
- Ethernet for configuration, dynamic labels and Tallies (TSL)
- Standalone labels, customizable logo
- 16 GPIs for tallies, count up/down trigger or preset recall
- Built-in analog/digital clocks can sync with LTC/NTP
- Borders can be turned on or off
- Two sets of safe area makers
- Visual alarm tags for video/audio alarm
- HDMI and SDI outputs with embedded stereo audio pair
- 5 year limited warranty



OG-Mi-16#-MB (4 slots)

- 16 x HD-BNC input for SDI inputs
- 1 x HD-BNC output for SDI outputs
- 2 x RJ50 for GPI/Tally
- 1 x HDMI output
- 1 x HD-BNC for LTC input

Standard Accessories

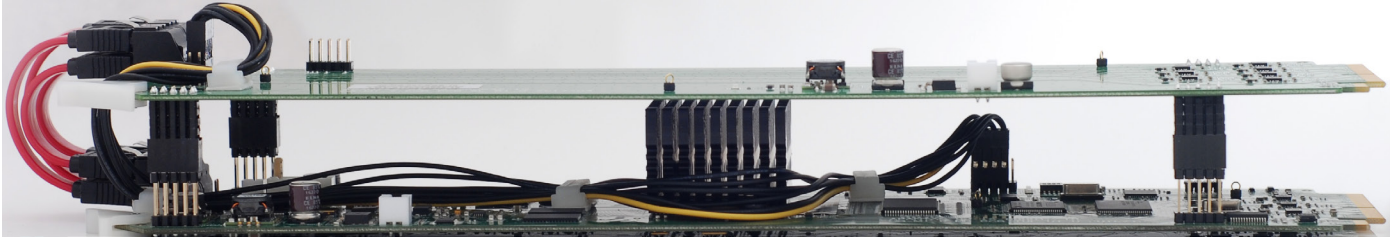
- RJ50 to DB9 (for GPI)
- DB9 to Terminal Block (for GPI)

Optional Accessories

- 18 x HD-BNC to BNC cable

OPENGEAR

OG-Mi-16#



OG-Mi-16#-MB

How to Order

OG-Mi-16#-SET-1:

OG-Mi-16#-MB + OG-Mi-16#-RM

OG-Mi-16#-SET-2:

OG-Mi-16#-MB + OG-Mi-16#-RM + 11 HD-BNC to BNC cable

Specifications

Inputs	16x 3G (level A/B)/HD/SD-SDI	Video Outputs	1x SDI and 1 x HDMI
Connector Type	HD-BNC	Audio Output	Embedded HDMI and SDI
Total Windows	16	Output Resolution	1920x1080P 50/60Hz
Serial Digital	3G/HD/SD-SDI in 50/59.94/60Hz	On Screen Display	Borders, Labels, Tallies, Audio meters, Alarm tags, Safe area markers
Equalization	120m at 2.97 Gbps, 140m at 1.48 Gbps, 400m at 270 Mbps with Belden 1694A	GPI	16 inputs with RJ50 - DB9 connector
Return Loss	> 15db up to 1.485 Gbps > 10db up to 3G	Serial Port	N/A
Embedded Audio	SMPTE-272M-A	IP	100 Base-T, TSL, AXP_Lite protocol
Alarms	No audio, audio high/low, no video, video format display	Electrial	20 W