

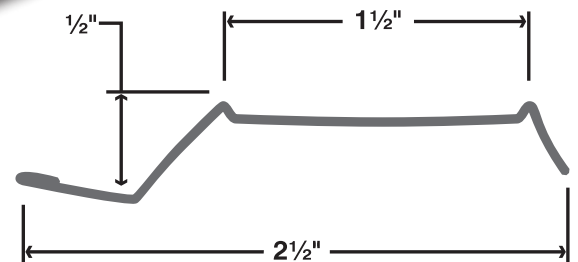
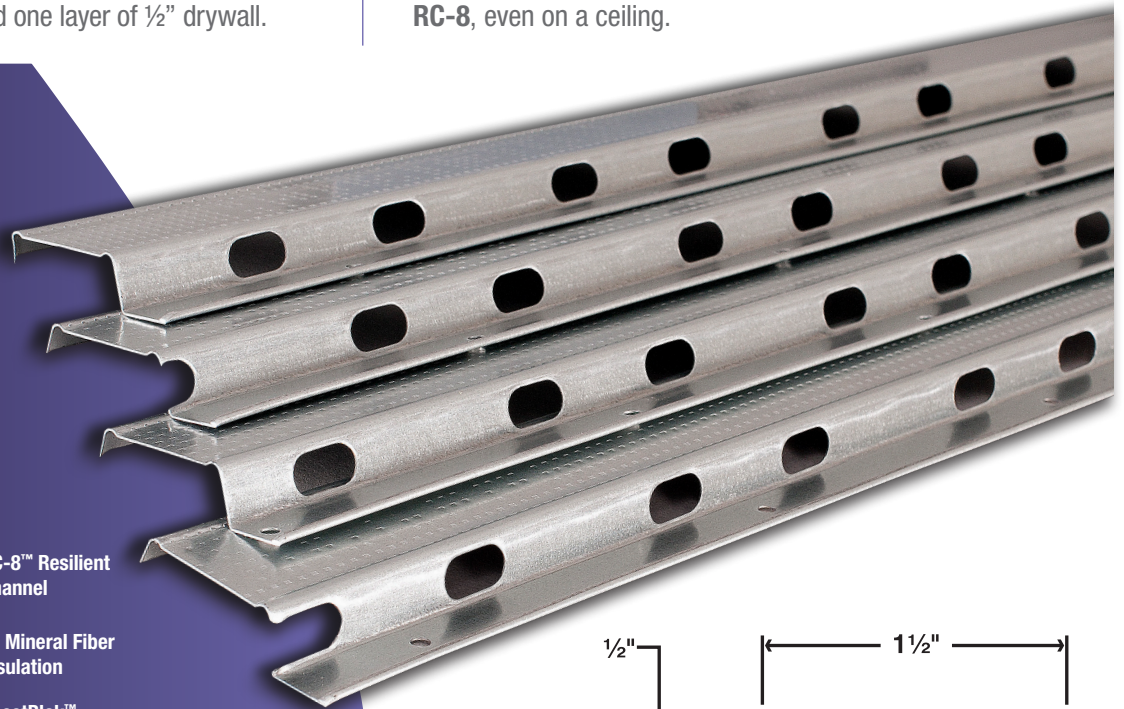
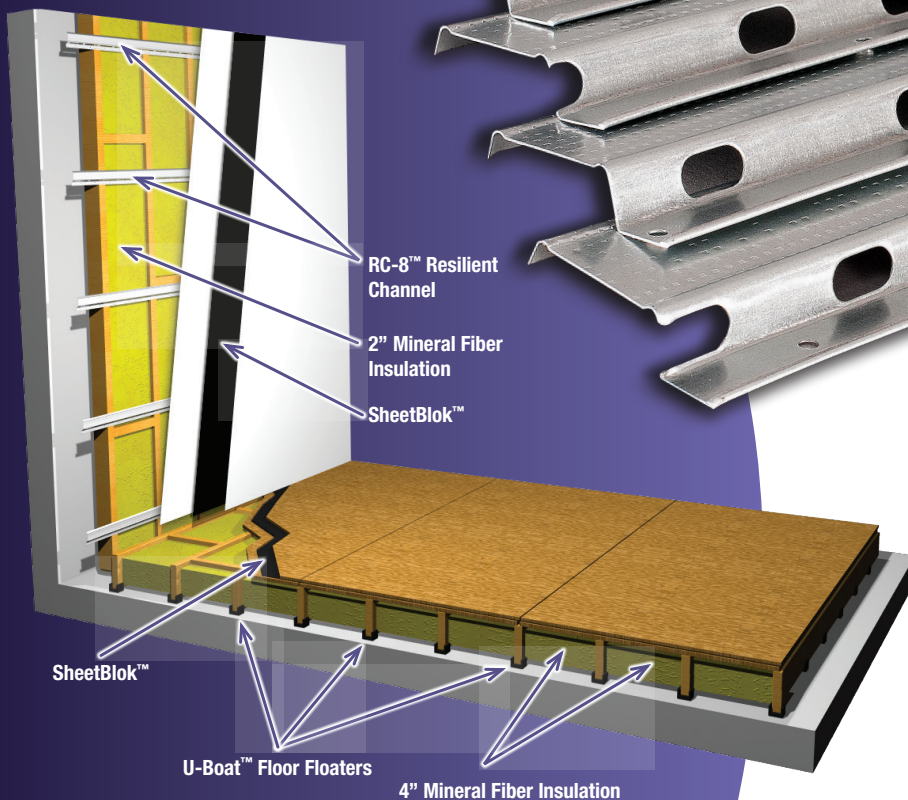
# RC-8™ Resilient Channel



- Mechanically decouples drywall layer from the supporting stud structure to reduce sound transmission through walls.
- Greatly improves the sound transmission characteristics of the wall or ceiling system.
- Engineered profile hangs drywall layer away from studs creating a ½" airspace.
- Up to two layers of 5/8" drywall may be hung on **RC-8™**; or one layer 5/8" drywall, one layer of **Auralex SheetBlok™** mass loaded vinyl barrier and one layer of ½" drywall.

**Auralex's RC-8™ Resilient Channel** is a specially-formed, sturdy metal device that when used to hang drywall, instead of just attaching the drywall to the studs or joists, greatly improves the sound transmission characteristics of the wall or ceiling system.

**RC-8** should be installed horizontally at the bottom and top of your wall, then every 2' or less in between. Up to (2) layers of 5/8" drywall and a layer of **Auralex SheetBlok™** may be hung on **RC-8**, even on a ceiling.



## COMPLIMENTARY PRODUCTS:

- SheetBlok™ Sound Barrier
- U-Boat™ Floor Beam Float Channels
- Mineral Fiber Insulation
- StopGap™ Acoustical Sealant

All copyrightable material ©Copyright Auralex Acoustics, Inc. 1994-2017. Auralex, Total Sound Control and Real-World Acoustics are registered trademarks, and RC-8, SheetBlok, U-Boats and StopGap are trademarks, of Auralex Acoustics, Inc. All rights reserved. Proudly designed and manufactured in the U.S.A

**Real-World Acoustics®**

**1-800-959-3343 / 317-842-2600**  
9955 Westpoint Drive, Suite 101, Indianapolis IN USA 46256

1386-216.RC-8 Spec Sheet (04/27/2017 - 11:09 AM)