

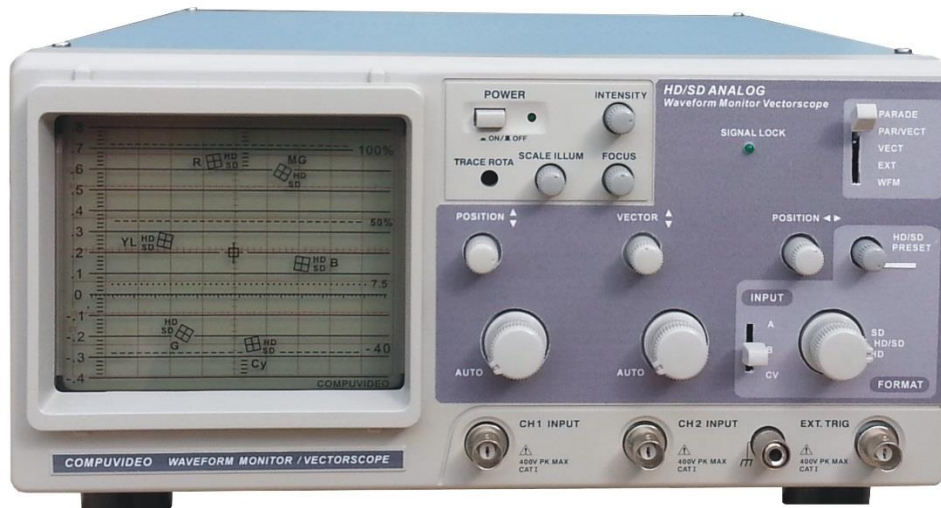
COMPUVIDEO®

HDTV/SDTV Waveform Monitor/Vector Combination with 6" Hi-Res CRT

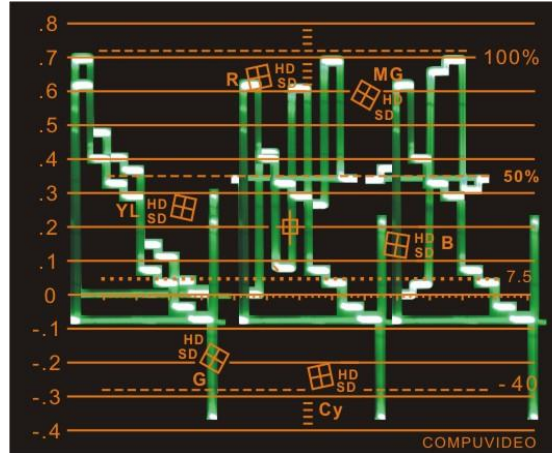
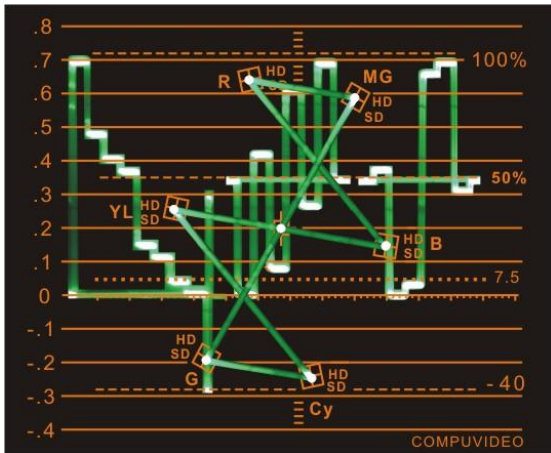
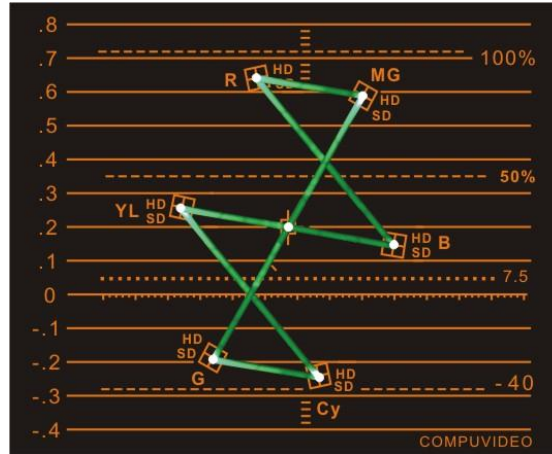
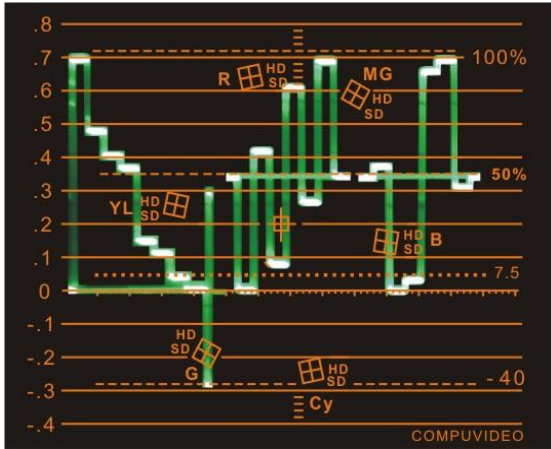
is specially designed for HD / SD Analog Component NTSC, PAL and SECAM Systems.

You can choose from desktop or rack mount units, they all provide rear-panel simultaneous input connections with overlaid waveform/vector displays and worldwide power supply. Smart master control provides user-friendly operation.

SVR-1100HDA



CRT Displays



Picture worth a thousand words. The quality of these Waveforms and Vectors speak for themselves. CRT offers highest possible Real Time Resolution with Native non-digitized Waveforms and Vectors for 100% reproduction of Every Detail in Real Time.

All units made to work under extreme conditions: generating very low heat - assuring non-stop operation and protected by metal enclosure from interference.

Specifications:

HDTV Formats	720, 1035, 1080.
SDTV Format	525/60 & 625/50 NTSC - 480, PAL - 575 (Y, Pb, Pr)
Inputs HD / SD	A and B Inputs Analog (Y, Pb, Pr) Loop thru, External
Standards:	HDTV / SDTV Analog
External Reference	HD, Composite (B.B. / Video), Component (Y, Gs)
Weight / Size:	19 lbs / 6.5 (H) x 11.5 (W) x 15.5 (D)
AC Power	100V - 240V 50/60 Hz, 25W
Option-1	HD/SD-SDI Input, 1x2 DA with Re-clock, HD/SD-SDI to Analog Monitor
Option-2	19" Rack Mount