

SUGGESTED SPECIFICATIONS: _____ projection screen(s), _____(H) x _____(W) size, portable tripod type. Legs shall be gable constructed of heavy gauge extruded aluminum, equipped with sturdy plastic shoes and attached to upright by one-piece hooded leg bracket. Automatic leg lock shall fasten all three legs and release with a touch of the toe. Upright tube 1" square and extension tube 7/8" square shall be of chrome plated steel. Extension tube shall raise screen to full size. Case shall adjust as low as tripod leg bracket. Extension tube shall have positive stops in all positions provided by plunger locks. To have a powder coated black 22 gauge octagon steel case, with flat back design. End caps shall conceal roller ends and provide integral nylon bearing surface to support roller. Surface shall have black masking

borders standard on flame retardant and mildew resistant fiberglass fabric. Fabric on all sizes shall be mounted into a metal strip in a metal Camlok® roller system without tape, glue, staples or cords so that fabric may be easily replaced yet prevent it from being accidentally pulled from the roller. Top edge of fabric is mounted securely into a powder coated tubular steel slat. Ends of slat shall be protected by plastic outer caps. A metal saddle, with steel pull, shall be fastened to slat by pop rivets. Shall be equipped with automatic, snug-fitting fabric lock in closed position. Shall be complete with built-in 18" keystone eliminator.

HDTV (16:9) Format Dimensions

Viewing Area (H x W)		Nominal Diagonal		Dimensions (Closed)		Bottom of Screen		Top of Screen		Top of Screen		Approx. Ship. Wt.	
						In Lowest Position		In Lowest Position		In Highest Position			
In.	Cm	In.	Cm	In.	Cm	In.	Cm	In.	Cm	In.	Cm	Lbs.	Kg
45" x 80"	114 x 203	92"	234	4" x 7½" x 94"	10 x 19 x 239	20"	51	69"	175	77"	196	37	16.8
52" x 92"	132 x 234	106"	269	4" x 7½" x 105"	10 x 19 x 267	20"	51	76"	193	84"	213	42	19.1

Video (NTSC 4:3) Format Dimensions

Viewing Area (H x W)		Nominal Diagonal		Dimensions (Closed)		Bottom of Screen		Top of Screen		Top of Screen		Approx. Ship. Wt.	
						In Lowest Position		In Lowest Position		In Highest Position			
In.	Cm	In.	Cm	In.	Cm	In.	Cm	In.	Cm	In.	Cm	Lbs.	Kg
43" x 57"	109 x 145	72"	183	4" x 7½" x 65½"	10 x 19 x 167	20"	51	68"	173	100"	254	29	13.2
50" x 67"	127 x 170	84"	213	4" x 7½" x 75½"	10 x 19 x 192	20"	51	73"	185	118"	300	32	14.5
60" x 80"	152 x 203	100"	254	4" x 7½" x 94"	10 x 19 x 239	20"	51	84"	213	128"	325	37	16.8
69" x 92"	175 x 234	120"	305	4" x 7½" x 105"	10 x 19 x 267	20"	51	94"	239	128"	325	42	19.1

Square Format Dimensions

Sizes (H x W)		Dimensions (Closed)		Bottom of Screen		Top of Screen		Top of Screen		Approx. Ship. Wt.	
				In Lowest Position		In Lowest Position		In Highest Position			
In.	Cm	In.	Cm	In.	Cm	In.	Cm	In.	Cm	Lbs.	Kg
50" x 50"	127 x 127	4" x 7½" x 57½"	10 x 19 x 146	18½"	47	72"	183	101"	257	27	12.3
60" x 60"	152 x 152	4" x 7½" x 65½"	10 x 19 x 167	20"	51	85½"	217	111"	282	29	13.2
70" x 70"	178 x 178	4" x 7½" x 75½"	10 x 19 x 192	20"	51	95½"	243	128"	325	33	15
84" x 84"	213 x 213	4" x 7½" x 94"	10 x 19 x 239	20"	51	109½"	278	128"	325	39	17.7
96" x 96"	244 x 244	4" x 7½" x 105"	10 x 19 x 267	20"	51	121"	307	128"	325	43	19.5

PRODUCT NOTES

- All surfaces will be seamless in standard sizes.
- Specifications subject to change without notice.

WHEN ORDERING, MARK APPROPRIATE SELECTIONS:

2. Select viewing surface (All Da-Lite surfaces are GREENGUARD GOLD Certified.):

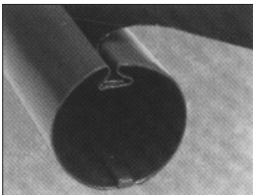
- ☐ Matte White
- ☐ High Contrast Matte White
- ☐ Video Spectra 1.5

2. Optional accessories:

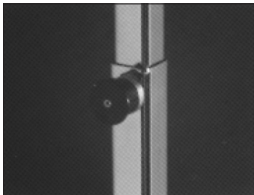
- ☐ Carrying Case
- ☐ Carpeted Case
 - ☐ Black Carpet
 - ☐ Gray Carpet
- ☐ Tripod Skirt



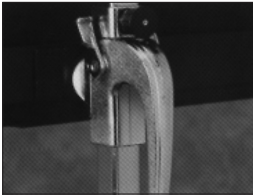
Extruded Aluminum Legs With Toe Release
Heavy-gauge tripod legs lock securely for transport and release at the touch of a toe.



Exclusive Camlok® Roller System
Camlok® roller system prevents picture surfaces from pulling off the roller.



Self-Locking Extension Tube
An easy operating height adjuster and a screen case lock.



Screen Fabric Tension Lever
Locking the screen fabric rigidly in place during usage, the screen fabric tension lever prevents the surface from shifting, ensuring long product life.



A BRAND OF MILESTONE AV TECHNOLOGIES
www.milestone.com
P 800.622.3737 / 574.267.8101
F 877.325.4832 / 574.267.7804
E info@da-lite.com

In British Columbia, Milestone AV Technologies ULC carries on business as MAVT Milestone AV Technologies ULC.

©2016 Milestone AV Technologies. DL-0232 (Rev. 1) 1116.
Da-Lite is a registered trademarks of Milestone AV Technologies. All other brand names or marks are used for identification purposes and are trademarks of their respective owners. All patents are protected under existing designations. Other patents pending.

Project Name: _____

Architect: _____

Contractor: _____ Phone: _____

Reseller: _____ Phone: _____