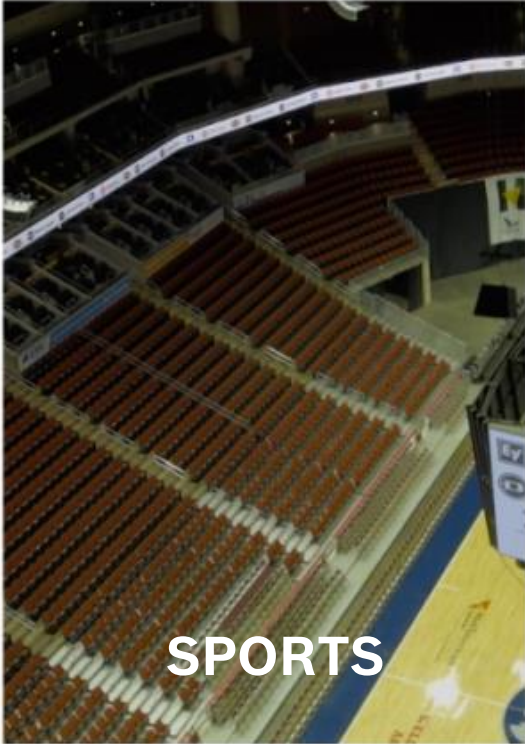


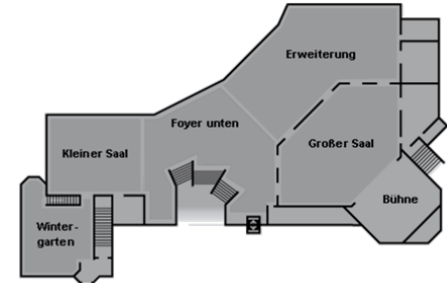
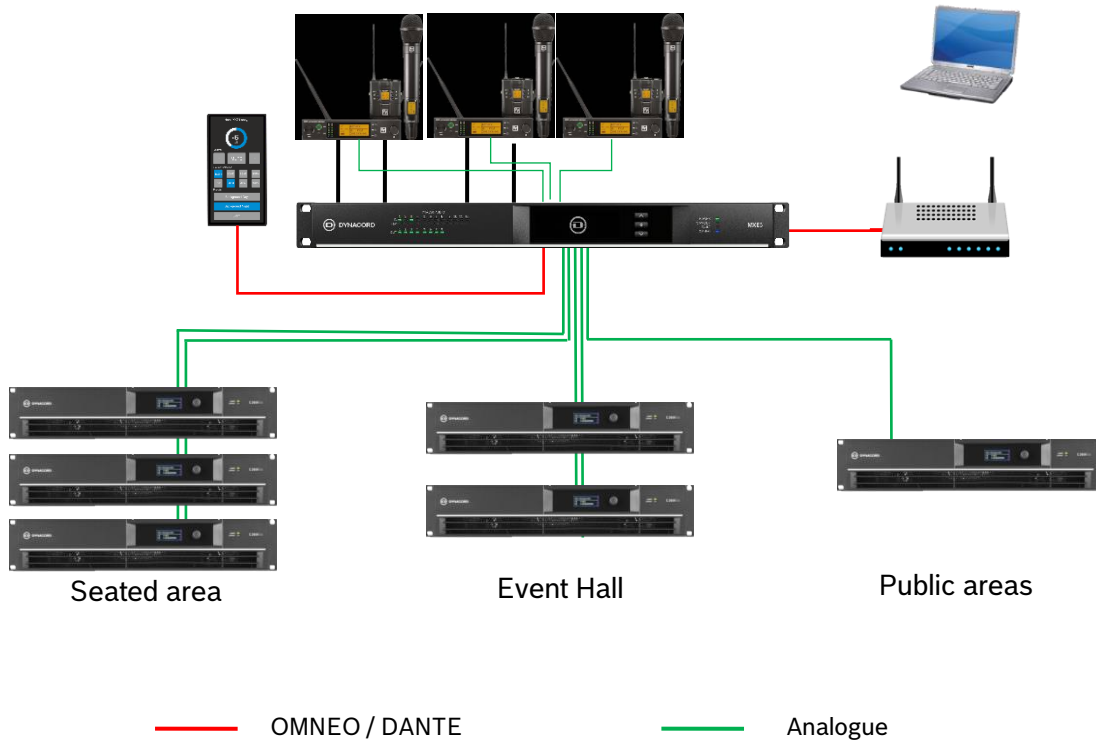
# MXE SERIES

## Focus Applications



# MXE SERIES

## MXE5 – Converntion Center & HOW

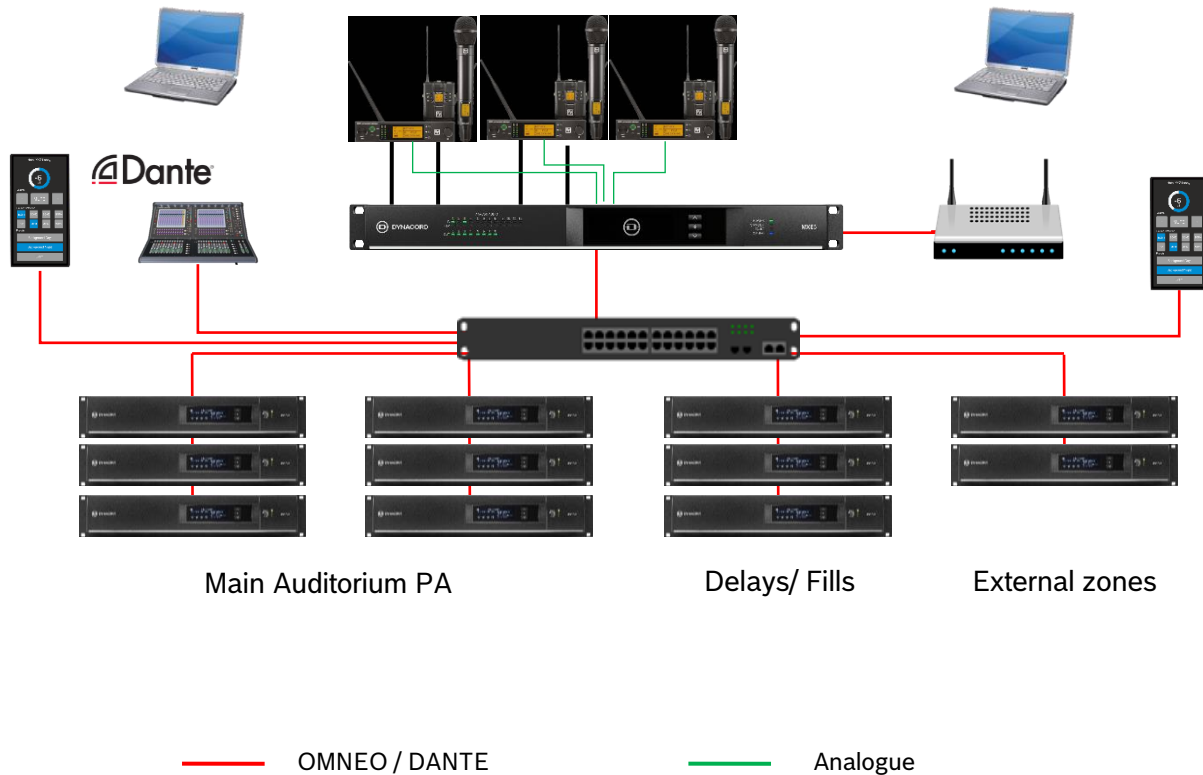


### Simple System:

- ▶ MXE5 as audio matrix and input mixer for multiple zones
- ▶ C series amps with speaker processing and remote Turn on via GPIO
- ▶ TPC-1 User control for zone level control and preset recall
- ▶ Wireless PC or tablet can be added for advance mixing control in zone areas

# MXE SERIES

## MXE5 – Performing Arts & Show

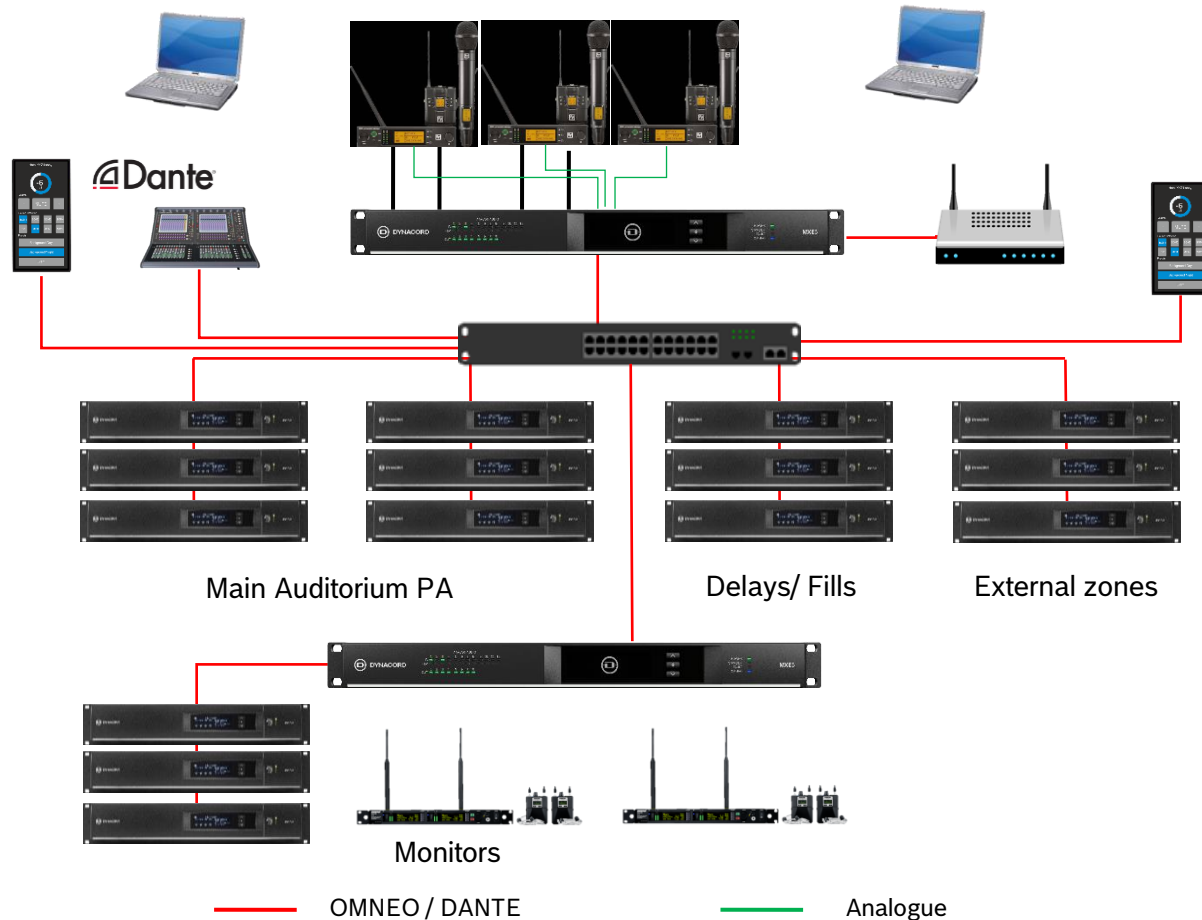


### Front-of-house system:

- ▶ MXE5 as audio matrix and system manager
- ▶ IPX amps with full DSP, control to PC via wireless (FOH engineer) or TPC-1 (facility manager in an office or on stage)
- ▶ System can be run in full 96kHz resolution
- ▶ MXE5 also provides mixing for external zones completely separately from the main PA

# MXE SERIES

## MXE5 – Performing Arts & Show



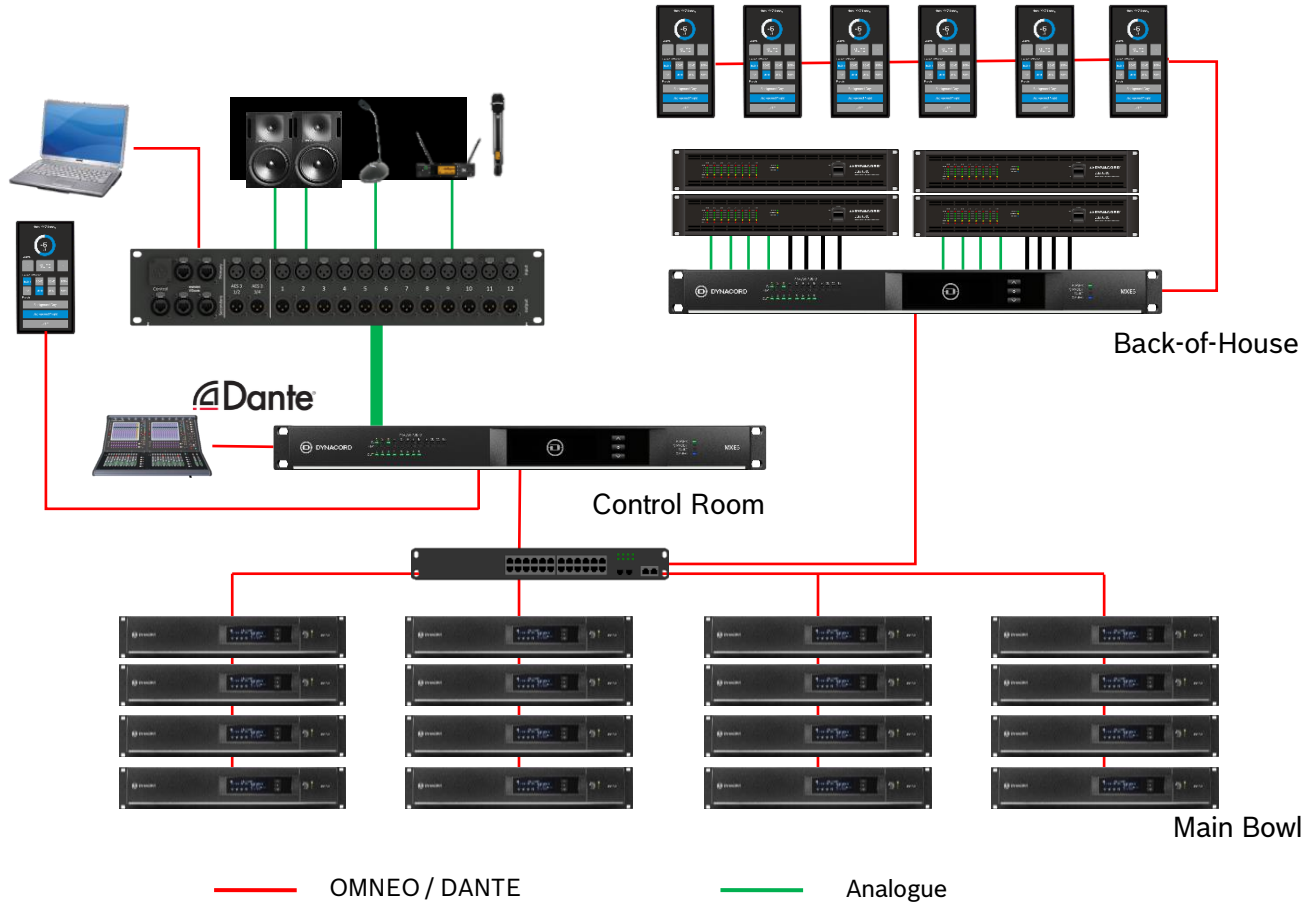
### Front-of-house system:

- ▶ MXE5 as audio matrix and system manager
- ▶ IPX amps with full DSP, control to PC via wireless (FOH engineer) or TPC-1 (facility manager in an office or on stage)
- ▶ System can be run in full 96kHz resolution
- ▶ MXE5 also provides mixing for external zones completely separately from the main PA
- ▶ MXE5 can be sent sub mixes from the console so that musicians can create and control their own monitor mixes via TPC-1 or BYOD.



# MXE SERIES

## MXE5 – Sports



### Back-of-house / Corporate boxes system:

- Hi-Z, non DSP amps (e.g. DSA/CPS)
- Speaker processing via MXE5
- Zone control via MXE5 and TPC-1

### Control room:

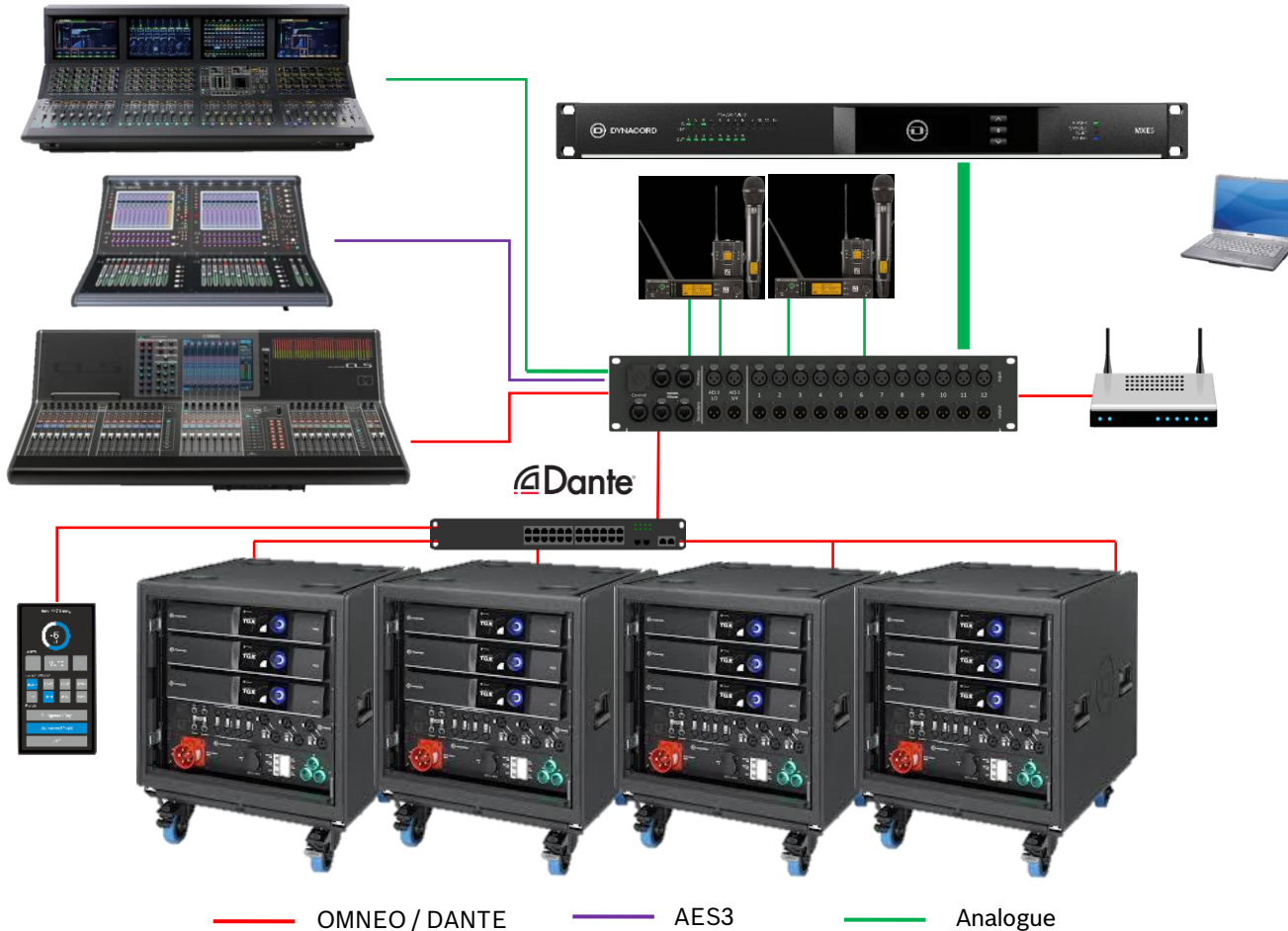
- Local inputs connected via CP-MXE panel
- PC (event operator) or TPC-1 (facility manager).

### Main bowl system:

- MXE5 as audio matrix and system manager
- IPX amps and MXE5 delivers full DSP control via SONICUE

# MXE SERIES

## MXE5 – Live Production



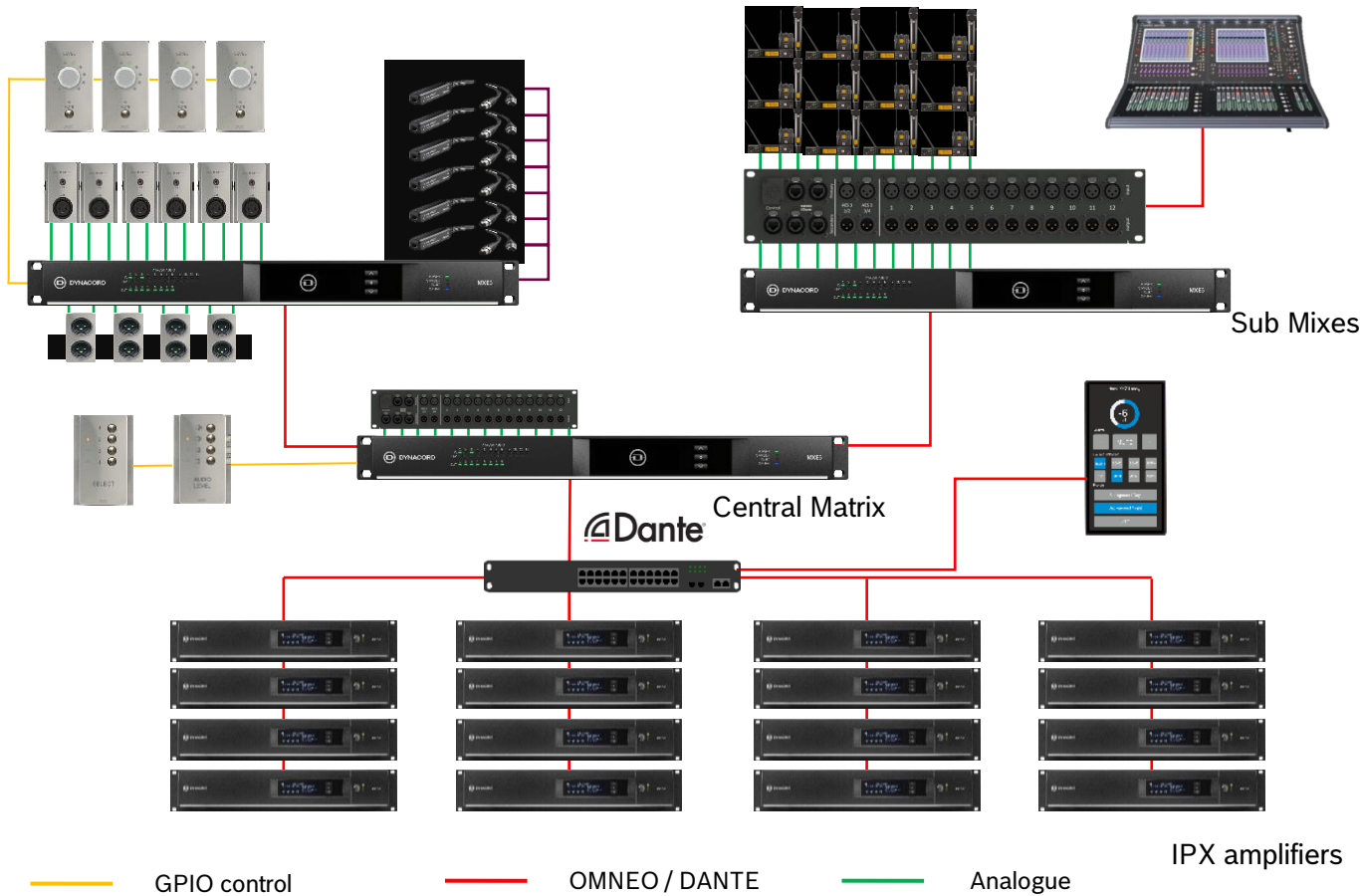
### FOH



- FOH consoles inputs connected via CP-MXE panel
- **MXE5** used as
  - Collecting consoles mixing and switching
  - Analogue and AES to Dante converter
  - System wide manager and controller
  - Local mixer for host act - during console switch
  - System wide 96kHz
- **TPC-1** used as a remote system controller
  - Can still switch consoles and mix inputs from surface
  - Recall presets and be stage end system controller

# MXE SERIES

## MXE5 – Expansion



### Expanding the system



- Local MXE5s creates sub mixes in various locations and sends to the central MXE5 via Dante
- Central MXE5 collects and masters the submixes for distribution to 24 Zones via IPX amps
- 3<sup>rd</sup> party wall plates can be added for local inputs and outputs
- 3<sup>rd</sup> part volume controls and preset recalls can be connected via GPIO for simple individual zone and input controls
- To increase the system output zones, Sub mix MXE5s can bypass the central MXE5 matrix, to connect with IPX inputs directly
- TPC-1 can control multiple MXE5 devices on the same network – making the entire system feel like a single device for the user control
- System INPUTS: 48 inputs + analogue
- Number of ZONES: Range from 24 zones to 72 zones are possible, depending on the number of direct connections to IPX amps