

CMA-2001 and CMA-3002

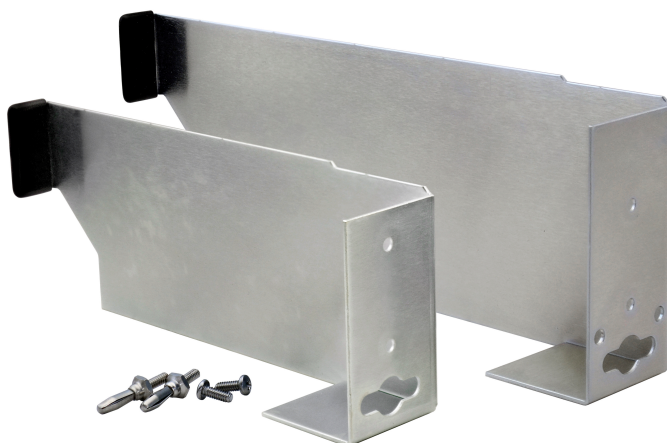
CHASSIS MOUNT ADAPTER



Description

The CMA-2001 and CMA-3002 chassis mount adapters are required to securely hold each fiber optic isolator or interface converter installed in a rack mount chassis.

Isolator/Modem and other cards typically install from the rear of the chassis, providing electrical and fiber optic connections at the rear of the chassis.



Accessories

Features:

- Alignment pins on the Chassis Mount Adapter assure proper mating between power connectors on the fiber optic isolators and the rack mount chassis power bus.
- Easy front or rear access to both the fiber optic and electrical interface connectors when inside the rack mount chassis.

Compatibility Chart

Chassis Mount Adapter	Model	Rack Mount Chassis
CMA-2001	FOI-2xxx	RMC-2101
	FOI-4xxx	
CMA-3002	FOI-2xxx	RMC-3101
	FOI-4xxx	RMC-3102

Specifications

		width	height	length
Dimensions	CMA-2001	7.344 in (186 mm)	2.844 in (72 mm)	1.485 in (38 mm)
	CMA-3002	9.559 in (243 mm)	3.468 in (88 mm)	1.57 in (40 mm)

Installation Instructions

Two mounting holes on the CMA's base plate flange align with the threaded holes on the fiber optic isolator unit, above the power jack. A banana plug is supplied to fasten the two units together.

