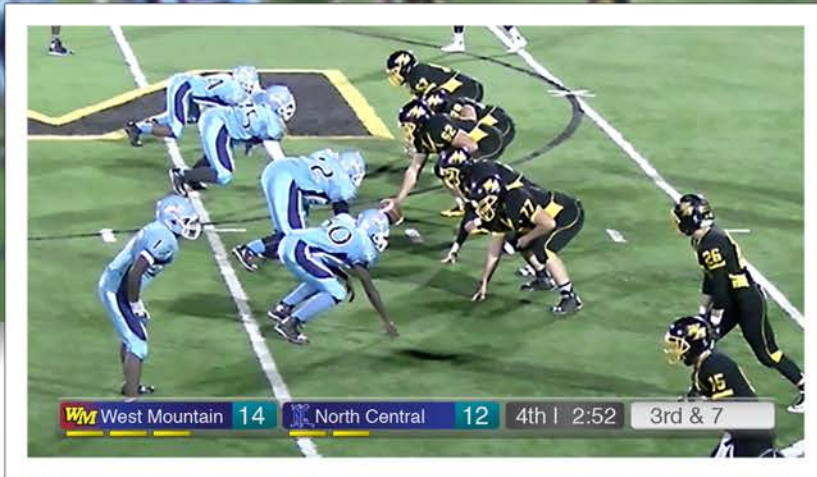




# GY-HM200SP

Sports Production Camera



## GY-HM200SP

### Featuring

- ✓ Graphic Score Overlays for most sports
- ✓ Option for custom logos
- ✓ Live Streaming to Web
- ✓ Integrated Ultra HD 12x Zoom Lens with 24x Dynamic Zoom in HD mode
- ✓ 120 fps Slow Motion Recording
- ✓ Dual SDXC/SDHC Card Slots



*Introducing an innovative and affordable Sports Production Camera enabling professional-quality, single-camera, single operator sports coverage*





## Single Camera Live Streaming

*When your audience can't make the event, stream it to them live!*

The GY-HM200SP makes sharing with your audience easier than ever. This new professional camcorder enables single-camera sports coverage producing real-time score overlays on recorded or streamed HD video *without requiring an external CG or production switcher*. It's easy for one person to shoot the game, record, insert graphics, and stream the production live—all directly from the camera.

The GY-HM200SP features JVC's latest IP communications engine giving you remote control and monitoring of vital camera and lens functions from a tablet, smartphone, or computer anywhere in the world. Live streaming is possible in HD or lower resolutions, depending on available bandwidth. Sporting events may be streamed to a decoder at a cable head-end, or directly to the internet through a content delivery network such as Facebook, YouTube, USTREAM or Wowza server. Just press one button and you're streaming to the world! And while streaming, the camera continues to function as a high quality, full HD camcorder giving you a pristine copy of the game.

The camera comes with graphic layouts for a variety of sports, which for schools with limited equipment and personnel resources, provides an innovative and affordable solution for producing professional-quality, single-camera coverage. And, beyond its built-in graphics overlays, the GY-HM200SP includes all the professional features of JVC's popular 4KCAM camcorder, the GY-HM200, including perhaps most importantly for a single operator, **Full Auto Mode**.



# Recording Capabilities



## In-camera Score Overlays and Customization



*The camera receives score info directly from a mobile device*

The GY-HM200SP produces a real-time score overlay on recorded or streamed video output for a variety of popular sporting events including football, soccer, volleyball, hockey and more. The overlay is produced for both the streamed and recorded video simultaneously.

The camera comes with three standard Home/Guest

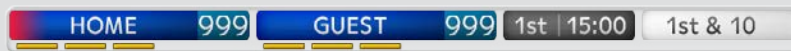
graphic templates that are easily customizable. The camera receives score information directly from a mobile device connected wirelessly to the camera using an intuitive GUI. It is possible for the camera to interface directly to the sports venue's own scoreboard controller

through a wired or wireless interface.\* A companion software application is available which enables the user to store multiple team names and logo bitmaps within the camera.

## Example Graphic Overlays

### *The Football Optimized Overlay*

*Optimized for football — this graphic overlay includes Team Names, Score, Quarter, Time Clock, Downs and Time Out markers*



### *Type 1 Customizable Overlay*

*Customizable for nearly any sport Type 1 features Team Names, Score, Period or Quarter and Time Clock*



### *Type 2 Customizable Overlay*

*Customizable for nearly any sport Type 2 features Team Names and Number of Games Won, Score, and Period or Quarter*



## Integrated 12x Ultra HD Lens, 1/2.3-inch CMOS Sensor

The GY-HM200SP was built to deliver stunning, true to life video. The ultra high quality imagery begins with a precision 12x F1.2-3.5 optical zoom lens (35mm equivalent: 29.6-355mm). JVC's 4K CMOS sensor with 12.4M pixels delivers high sensitivity and excellent performance over a wide range of lighting conditions. Details are crisp and accurate throughout the entire image plane. When shooting in the HD mode, Dynamic Zoom combines optical zoom and pixel mapping to create seamless and lossless 24x zoom.

### *HD Mode for 24X Dynamic Zoom*

Original Image No Zoom



12X Optical Zoom



24X Dynamic Zoom in HD Mode



*Dynamic Zoom combines Optical Zoom plus Pixel Mapping—focusing on a smaller image area for lossless 24X Zoom*

*\*Requires optional interface from third party manufacturer not affiliated with JVC.*

## GY-HM200SP Sports Production Camera

### Dual SDHC/SDXC Card Slots

The GY-HM200SP can create hours of pristine recordings to affordable non-proprietary SDHC/SDXC media in a variety of image formats including 4K Ultra HD, Full HD with 4:2:2 sampling, and SD and web friendly proxy formats. Dual SDHC/SDXC card slots make it truly versatile as a sports camera, offering such benefits as simultaneous recording and relay recording. In relay recording mode, you can shoot the game continuously over multiple cards—when one card is full, the camcorder switches automatically and seamlessly to the other card—perfect for overtime games!



You can record up to 100 minutes of 4K or 540 minutes of AVCHD video on a single 128GB card.

## GY-HM200SP

Sports Production, Live Stream capable compact handheld camcorder with integrated 12x zoom lens



Camera shown with optional shotgun mic

### Key features

- Single 1/2.3-inch CMOS image sensor with 12.4m pixels
- High quality integrated 12x F1.2-3.5 zoom lens (35mm equivalent: 29.6-355mm)
- Graphic score overlay with custom logo option
- Dynamic Zoom in HD mode combines optical zoom and pixel mapping to create seamless and lossless 24x zoom
- 4K Ultra HD recording (150 Mbps, 24/30p) to SDXC (UHS-I Speed class3) cards
- 4K Ultra HD recording (70 Mbps, 24/30p) to SDXC/SDHC (Class 10) cards
- 4:2:2 Full HD (24-60p) recording at 50Mbps
- 120fps HD Slo-Mo recording (available December 2015)
- Live 4K UHD output via HDMI connector
- 2 position ND filter (1/4, 1/16)
- HD-SDI (3G) and HDMI outputs (4K output via HDMI only)
- HD-SDI and HDMI outputs can feed and trigger external recorder
- 2-channel XLR audio inputs with phantom power
- Built-in stereo microphone
- Dual SDHC/SDXC slots enable dual, backup and continuous recording
- Advanced JVC streaming engine compatible with USTREAM, Zixi and Wowza Streaming Engine
- IP Network Remote Control, Remote Viewing, Score-keeping, Metadata editing, FTP clips\*
- 3.5-inch color LCD display (920K pixel) with smart focus assist function
- 0.24-inch color viewfinder (1.56M pixel) with smart focus assist function
- Histogram Display
- Wired remote control supported
- 9 user button assignable functions
- Includes handle unit, SSL-JVC50 7.4V battery, and an AC Adapter

*\*Requires appropriate network connection and adapter*

# JVCKENWOOD

JVCKENWOOD USA Corporation  
1700 Valley Road  
Wayne, NJ 07470  
pro.jvc.com

Copyright © 2016