



ASTRA FAMILY

Next generation LED panels

The family of innovative ASTRA Panels are built on the legacy of the Litepanels original 1x1 panel, which revolutionized the lighting industry. Every design element of these next generation panels has been meticulously crafted to deliver a new standard in the form and function needed for independent and field production as well as Studio installations.

The ASTRA Panels are designed with upgraded technology, featuring select premium quality, high CRI surface mount LEDs, paired with custom designed optics. These tightly binned LEDs provide the ASTRA with superior color reproduction and a light output that is brighter than the original 1x1 panel and the first generation of ASTRA, providing greater flexibility than ever before.

THE LITEPANELS DIFFERENCE

- Full spectrum quality soft light, with visually accurate color temperature
- The widest variety of LED fixtures available, with flexible AC or DC power options
- Smooth dimming from 100% to 0, with no noticeable color shift
- Flicker-free performance at any frame rate or shutter angle
- Controlled current and thermal management for long LED life
- Efficient power management delivers low power consumption and enhanced reliability
- Engineered and designed in Los Angeles, CA



ASTRA 6X BI-COLOR

Optional Bluetooth Communications module and Gold Mount Battery plate



ASTRA FAMILY

The next generation of professional LED panels just got brighter.



ASTRA 6X

MODELS:
Bi-Color - 935-1023
Daylight - 935-1021

- **6X** brighter than the original 1x1
50% brighter than the previous Astra
- Offers up to 614 Footcandles at 5 feet/1.5m
- Intelligent thermal management system passive or active cooling
- Max power draw 105W
- CRI/TLCI:
 - Daylight 95 / Tungsten 98



ASTRA 3X

MODELS:
Bi-Color - 935-2023
Daylight - 935-2021

- **3X** brighter than the original 1x1
50% brighter than the Astra EP series
- Offers up to 364 Footcandles at 5 feet/1.5m
- Passive cooling
- Max power draw 55W
- CRI/TLCI:
 - Daylight 95 / Tungsten 98



ASTRA SOFT

MODELS:
Bi-Color - 935-5021

- 25% brighter than the previous Astra Soft
- Offers up to 109 Footcandles at 5 feet/1.5m
- Intelligent thermal management system passive or active cooling
- Max power draw 105W
- CRI/TLCI:
 - Daylight 95 / Tungsten 98

Advantages

- Increased output means more flexibility
 - Output is 50% more powerful than 1st Gen ASTRA
 - ASTRA 6X Series => **6X** brighter than the original 1x1
 - ASTRA 3X Series => **3X** brighter than the original 1x1
- High performance LEDs with custom paired optics
 - Higher intensity = Longer throw = Wider effective illuminated area
- Flicker-free at any frame rate or shutter angle
- Superior color reproduction
 - High color rendition (CRI) TLCI rated
 - Accurate color temperatures
- Ultra-smooth dimming from 100% to 0
 - No noticeable color shift throughout the entire range
- Efficient thermal management
 - Completely silent passive cooling mode
 - Ultra-quiet active cooling mode with double light output (Not available in ASTRA 3X Series)

Features

- Flexible, modular concept
 - Optional bluetooth and DMX communications modules allow the brightness, color temperature and cooling mode to be controlled
 - Optional yoke mounted Gold Mount® or V-Mount battery plates
 - External power supply
- Modern fixture design
 - Easily identifiable and ergonomic manual controls for dimming, color and power status
 - Aluminum I-beam core construction to provide maximum durability and superior thermal management
- Aluminum accessory mounting points and lens/filter rails
- Durable, industry standard 3-pin XLR locking power connector
- Custom curved yoke design
 - Wide, unobstructed tilt range
- Yoke mounted power supply and optional battery plates with dual integrated cable guides
- Removable TVMP connector for flexible mounting options
- Two alternate ¼-20 mounting points






Optional Accessories





Light Shaping

900-3520	ASTRA 1x1 Adapter Frame (for Honeycomb and Barndoors)	
900-3017	1x1 Honeycomb Grid - 30°	
900-3018	1x1 Honeycomb Grid - 45°	
900-3019	1x1 Honeycomb Grid - 60°	
900-3020	1x1 Honeycomb Grid - 90°	
900-3021	Barndoors	
900-3503	ASTRA 1x1 5-piece CTO Gel Set with Bag	
900-3504	ASTRA 1x1 5-piece CTB Gel Set with Bag	
900-3505	ASTRA 1x1 Individual Gel – Opal Frost Diffusion	
900-3506	ASTRA 1x1 Nanoptic Lens Set with Bag	
900-0026	Snapbag Softbox for ASTRA 1x1	
900-0027	Cloth Set for Snapbag Softbox for ASTRA 1x1 and Hilio D12/T12	
900-0028	40° Snapgrid Eggcrate for Snapbag Softbox for ASTRA 1x1 and Hilio D12/T12	
900-0033	ASTRA Snapbag softbox - Big	
900-0034	40° Snapgrid for Big ASTRA Snapbag	



Mobile Power

900-0024	P-Tap to 3-pin XLR cable	
900-3507	A/B Gold Mount® Battery Bracket with P-Tap to 3-pin XLR cable	
900-3508	A/B V-Mount Battery Bracket with P-Tap to 3-pin XLR cable	



Communications Module

900-3501	ASTRA 1x1 DMX (RJ-45) Communications Module	
900-0006	RJ45 to 5pin XLR Male Conversion Cable	
900-3502	5-Pin XLR Communications Module	
900-3519	Bluetooth Communications Module	



Soft Cases

900-3521	ASTRA 1x1 1-Light Bag	
900-3522	ASTRA 1x1 2-Light Bag	

Additional Accessories

900-3518	Pole Operated Yoke for ASTRA 1x1	
900-3509	Fixture Cover for ASTRA 1x1	

Pelican™ Cases

900-3041	Pelican Traveler Trio case for ASTRA	
900-3043	Pelican Traveler Duo case for ASTRA	

ASTRA Family Specifications

Color Temperatures

ASTRA 6X Series:

Daylight - 935-1021

Bi-Color (Tungsten-Daylight) - 935-1023

ASTRA 3X Series:

Daylight - 935-2021

Bi-Color (Tungsten-Daylight) - 935-2023

ASTRA Soft Series:

Bi-Color (Tungsten-Daylight) - 935-5021

Size: 17.7 x 16.3 x 5.3" / 45 x 41.3 x 13.4 cm

Weight: 7 lbs / 3.2 kg

Power Requirements: 13-24V DC / 100-240VAC

Maximum Power Draw:

ASTRA 6X & Soft 105W

ASTRA 3X series 55W

Power Supply: 24V DC via AC Adapter

Includes: Fixture, Yoke, Power Supply, US & EU Power Cords



ASTRA 6X

ASTRA 6X BI-COLOR - beam angle: 46°

ASTRA 6X BI-COLOR DAYLIGHT

Distance	Footcandles	LUX
5 ft. / 1.5m	588	6330
10 ft. / 3m	147	1583
15 ft. / 4.6m	65	703

ASTRA 6X BI-COLOR TUNGSTEN

Distance	Footcandles	LUX
5 ft. / 1.5m	528	5685
10 ft. / 3m	132	1421
15 ft. / 4.6m	59	632

ASTRA 6X DAYLIGHT - beam angle: 46°

ASTRA 6X DAYLIGHT

Distance	Footcandles	LUX
5 ft. / 1.5m	614	6612
10 ft. / 3m	154	1653
15 ft. / 4.6m	68	735

ASTRA 3X

ASTRA 3X BI-COLOR - beam angle: 46°

ASTRA 3X BI-COLOR DAYLIGHT

Distance	Footcandles	LUX
5 ft. / 1.5m	345	3714
10 ft. / 3m	86	928
15 ft. / 4.6m	38	413

ASTRA 3X BI-COLOR TUNGSTEN

Distance	Footcandles	LUX
5 ft. / 1.5m	301	3244
10 ft. / 3m	75	811
15 ft. / 4.6m	34	360

ASTRA 3X DAYLIGHT - beam angle: 46°

ASTRA 3X DAYLIGHT

Distance	Footcandles	LUX
5 ft. / 1.5m	364	3922
10 ft. / 3m	91	980
15 ft. / 4.6m	41	436

ASTRA SOFT

ASTRA SOFT BI-COLOR - beam angle: 94°

ASTRA SOFT BI-COLOR DAYLIGHT

Distance	Footcandles	LUX
5 ft. / 1.5m	109	1178
10 ft. / 3m	27	294
15 ft. / 4.6m	12	131

ASTRA SOFT BI-COLOR TUNGSTEN

Distance	Footcandles	LUX
5 ft. / 1.5m	95	1022
10 ft. / 3m	24	256
15 ft. / 4.6m	11	114

Astra 6XB Daylight: CCT = D5952 (-0.4)

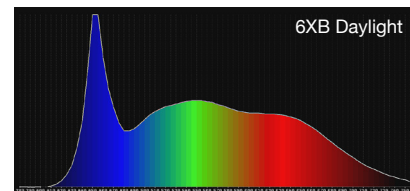
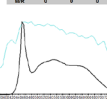
TLCI-2012 : 95 (D9952)



EBU : TLCI-2012

Litepanels

Scalar	Lightness	Chroma	Hue
R	0	0	0
RY	0	0	0
Y	0	0	0
YG	0	0	0
G	0	0	0
GB	0	0	0
B	0	0	0
BB	0	0	0
M	0	0	0



Astra 6XB Tungsten: CCT = P3192 (-0.0)

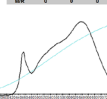
TLCI-2012 : 98 (P3192)



EBU : TLCI-2012

Litepanels

Scalar	Lightness	Chroma	Hue
R	0	0	0
RY	0	0	0
Y	0	0	0
YG	0	0	0
G	0	0	0
GB	0	0	0
B	0	0	0
BB	0	0	0
M	0	0	0



Astra 3XD Daylight: CCT = D6088 (-0.4)

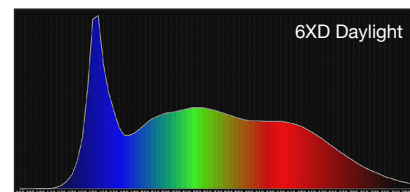
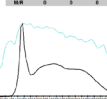
TLCI-2012 : 95 (D6088)



EBU : TLCI-2012

Litepanels

Scalar	Lightness	Chroma	Hue
R	0	0	0
RY	0	0	0
Y	0	0	0
YG	0	0	0
G	0	0	0
GB	0	0	0
B	0	0	0
BB	0	0	0
M	0	0	0



Astra 6XB Daylight: CCT = D6019 (-0.7)

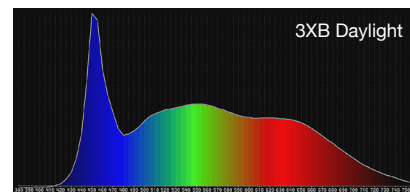
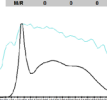
TLCI-2012 : 95 (D6019)



EBU : TLCI-2012

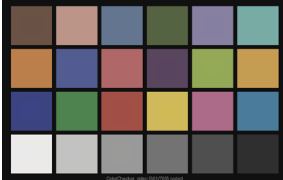
Litepanels

Scalar	Lightness	Chroma	Hue
R	0	0	0
RY	0	0	0
Y	0	0	0
YG	0	0	0
G	0	0	0
GB	0	0	0
B	0	0	0
BB	0	0	0
M	0	0	0



Astra 6XB Tungsten: CCT = P3171 (-0.2)

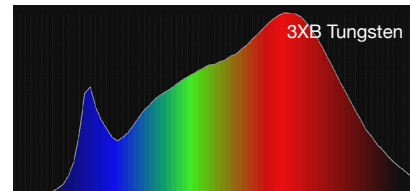
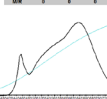
TLCI-2012 : 98 (P3171)



EBU : TLCI-2012

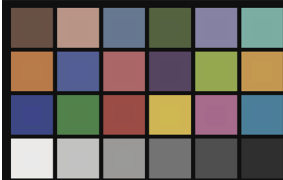
Litepanels

Scalar	Lightness	Chroma	Hue
R	0	0	0
RY	0	0	0
Y	0	0	0
YG	0	0	0
G	0	0	0
GB	0	0	0
B	0	0	0
BB	0	0	0
M	0	0	0



Astra 6XD Daylight: CCT = D6073 (-0.6)

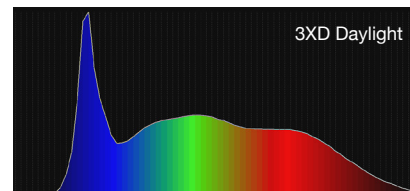
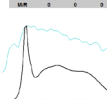
TLCI-2012 : 95 (D6073)



EBU : TLCI-2012

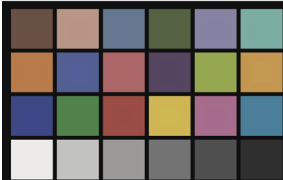
Litepanels

Scalar	Lightness	Chroma	Hue
R	0	0	0
RY	0	0	0
Y	0	0	0
YG	0	0	0
G	0	0	0
GB	0	0	0
B	0	0	0
BB	0	0	0
M	0	0	0



Astra 1X1 Soft Bi-Color (Daylight): CCT = D6010 (-1.0)

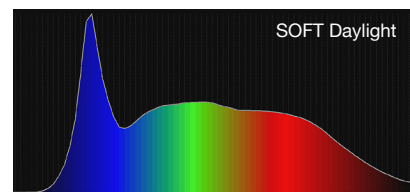
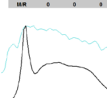
TLCI-2012 : 95 (D6010)



EBU : TLCI-2012

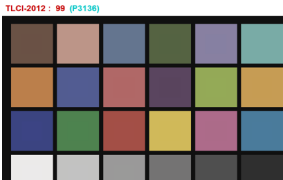
Litepanels

Scalar	Lightness	Chroma	Hue
R	0	0	0
RY	0	0	0
Y	0	0	0
YG	0	0	0
G	0	0	0
GB	0	0	0
B	0	0	0
BB	0	0	0
M	0	0	0



Astra 1X1 Soft Bi-Color (Tungsten): CCT = P3136 (+0.0)

TLCI-2012 : 98 (P3136)



EBU : TLCI-2012

Litepanels

Scalar	Lightness	Chroma	Hue
R	0	0	0
RY	0	0	0
Y	0	0	0
YG	0	0	0
G	0	0	0
GB	0	0	0
B	0	0	0
BB	0	0	0
M	0	0	0

