

VDM Series

vision display mounts

safe, reliable display mounting with the professional features that enable efficient installation

features:

- Fixed, Motion and Tilt mounts available
- Models available accommodates VESA patterns from 75x75 to 800x600mm
- Post-install leveling mechanism enables quick micro-adjustment of horizontal plane of display
- Safety locking features keep the display securely mounted
- Open wall plate design maximizes accessibility to connections and cable pass-through behind the display
- Select standard profile mounts include a Proximity Mounting Plate for small component accessories
- Low profile mounts feature a kick stand for additional space between the mount and wall for ease of installation and servicing, and are available in tilt and fixed form factors
- Certified to UL 2442 and C22.2 No. 60065



VDM-600-M



VDM-600-F



VDM-600-T-LP

specifications:

Vision Display Mounts wall mount monitor mounts shall be Middle Atlantic Products model # VDM-__-__. Vision Display Mounts shall have a recommended display size of __" to __", VESA size range of __mm to __mm and a weight capacity of __lbs. (refer to chart). Selected Vision Display mounts shall include a 9" x 12" small component accessory plate (available separately as model # PRX-MP-9X12), refer to chart. Selected models shall have __° tilt or __° roll tilt adjustment, refer to drawings. Vision Display Mounts shall mount __" from wall, refer to drawings. Full Motion Mounts, Model # VDM-__-M when fully extended shall be __" from wall, refer to drawings. Vision Display Mounts shall include a post install leveling mechanism to enable micro adjustment of horizontal plane of display after installing. Vision Display Mounts shall be constructed of phosphate pre-treated steel with a black powdercoat finish. Vision Display Mounts shall meet the EU RoHS Directive 2011/65/EU. Vision Display Mounts shall be manufactured by an ISO 9001 registered company. Vision Display Mounts shall be warrantied to be free from defects in materials and workmanship under normal use and conditions for the lifetime of the monitor mount. Vision Display Mounts shall be UL listed to UL standard 2442 in US and CAN/CSA-C22.2 No. 60065 in Canada.

Customizable specification clips available at middleatlantic.com



what **great systems** are built on.™

A brand of **legrand**

Middle Atlantic Products

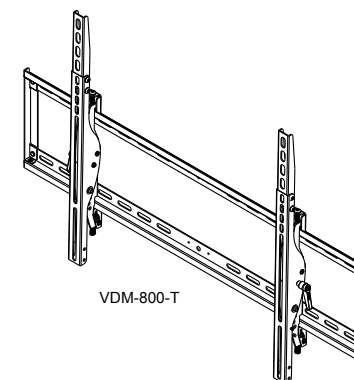
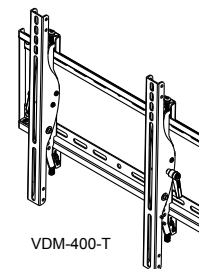
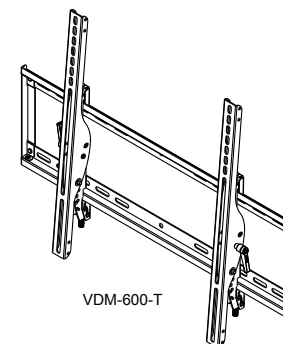
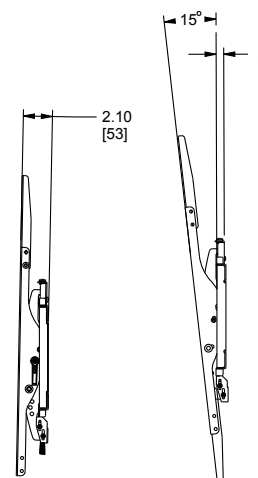
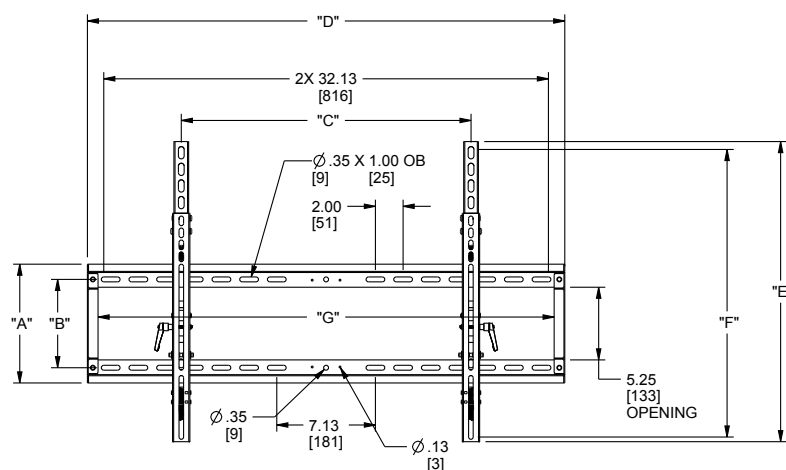
middleatlantic.com | middleatlantic.ca

96-01242 / rev d / 10-23-17

VDM Series vision display mounts

basic dimensions

REV	DESCRIPTION	REV BY	REV DATE	APP'D BY	DATE APP.
-	PRODUCTION RELEASE	///	///	JP	09/02/16
A	EC-10008 - UPDATED RECOMMENDED DISPLAY SIZE	TDP	10/17/17	RHP	10/17/17



MODEL #	CAPACITY LBS/KG	VESA SIZE RANGE	RECOMMENDED DISPLAY SIZE	"A"	"B"	"C" RANGE	"D"	"E"	"F"	"G"	PRX-MP-9X12 (SMALL COMPONENT ACCESSORY PLATE) INCLUDED
VDM-400-T	150 / 68.0	75x75mm - 400x400mm	37"-50"	8.58 [218]	6.38 [162]	1.25 [32] - 17.80 [452]	19.30 [490]	16.56 [420]	15.85 [402]	17.76 [451]	YES
VDM-600-T	180 / 81.7	75x75mm - 600x500mm	42"-70"	8.58 [218]	6.38 [162]	1.25 [32] - 26.00 [660]	27.40 [696]	20.57 [523]	19.76 [502]	25.87 [657]	YES
VDM-800-T	200 / 90.7	75x75mm - 800x600mm	55"-90"	8.58 [218]	6.38 [162]	1.25 [32] - 33.00 [838]	34.50 [876]	25.76 [654]	24.78 [629]	32.95 [837]	YES

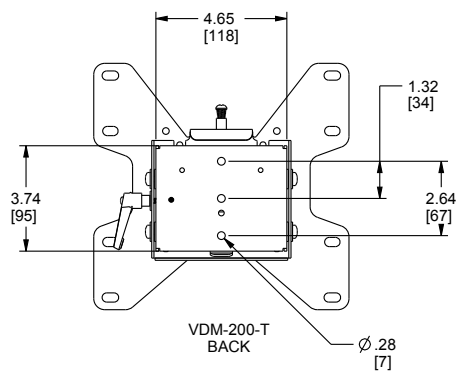
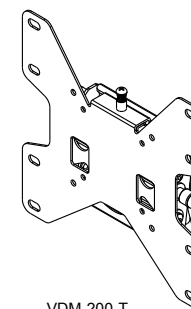
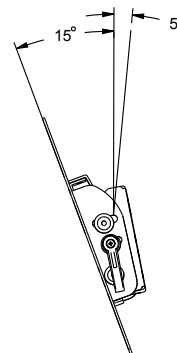
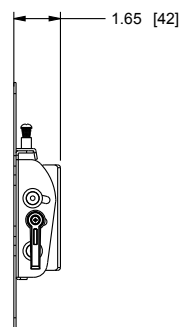
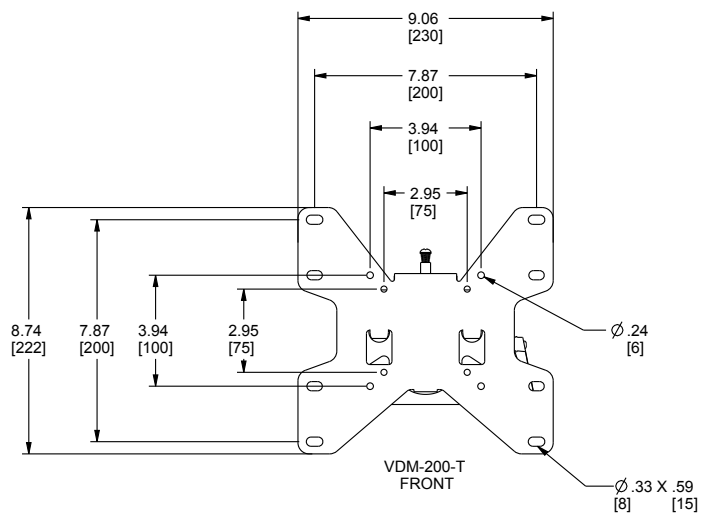
what **great systems** are built on.™

A brand of **legrand**

Middle Atlantic Products
middleatlantic.com | middleatlantic.ca

VDM Series vision display mounts

basic dimensions

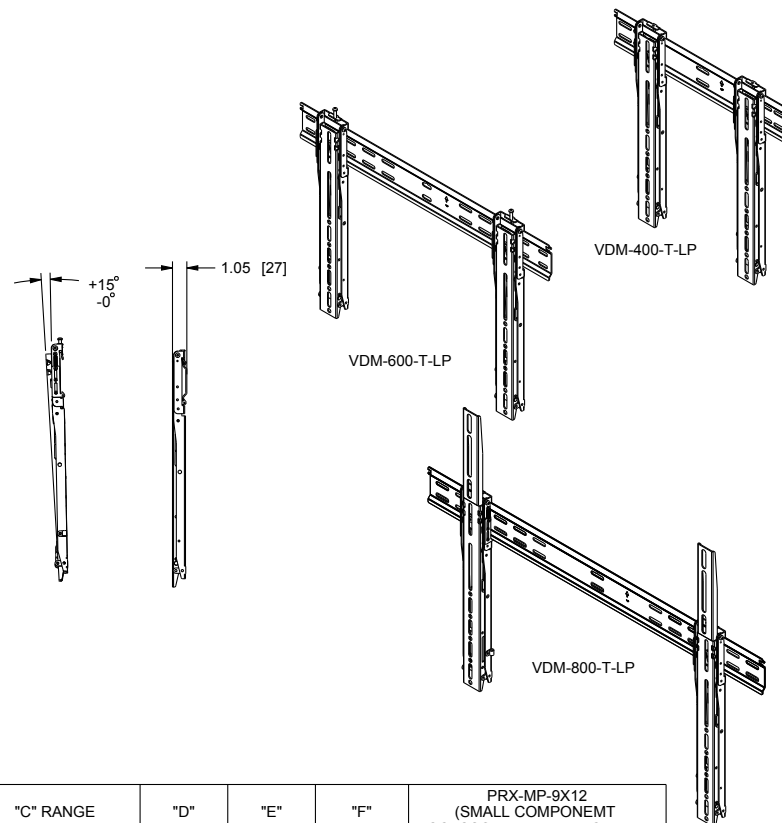
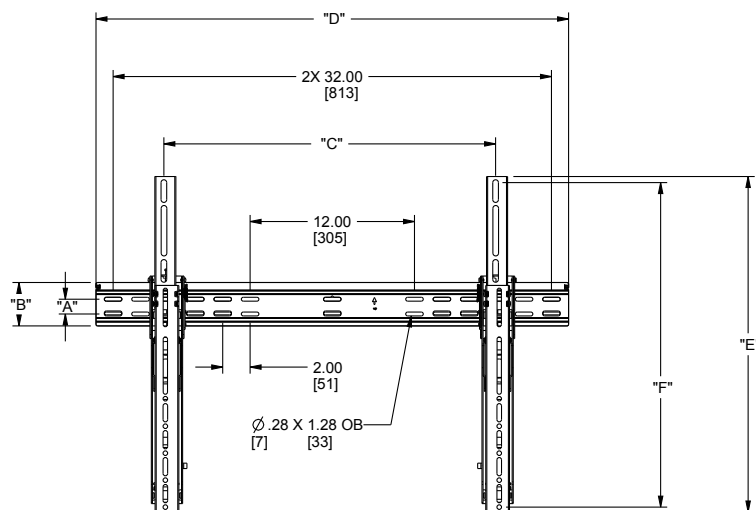


MODEL #	CAPACITY LBS/KG	VESA SIZE RANGE	RECOMMENDED DISPLAY SIZE	PRX-MP-9X12 (SMALL COMPONENT ACCESSORY PLATE) INCLUDED
VDM-200-T	80 / 36.3	75x75 - 200x200	19"-37"	NO

VDM Series vision display mounts

basic dimensions

REV	DESCRIPTION	REV BY	REV DATE	APPD BY	DATE APP.
-	PRODUCTION RELEASE	///	////	JP	09/02/16
A	EC-10008 - UPDATED RECOMMENDED DISPLAY SIZE	TDP	10/17/17	RHP	10/17/17



MODEL #	CAPACITY LBS/KG	VESA SIZE RANGE	RECOMMENDED DISPLAY SIZE	"A"	"B"	"C" RANGE	"D"	"E"	"F"	PRX-MP-9X12 (SMALL COMPONENT ACCESSORY PLATE) INCLUDED
VDM-400-T-LP	80 / 36.3	75x75mm - 400x400mm	40"-50"	1.08 [28]	3.17 [81]	2.30 [59] - 15.75 [400]	17.76 [451]	17.84 [453]	15.83 [402]	NO
VDM-600-T-LP	100 / 45.4	75x75mm - 600x400mm	40"-70"	1.08 [28]	3.17 [81]	2.30 [59] - 23.70 [602]	25.67 [652]	17.84 [453]	15.83 [402]	NO
VDM-800-T-LP	150 / 68.0	75x75mm - 800x600mm	50"-90"	1.08 [28]	3.17 [81]	2.30 [59] - 32.28 [820]	34.50 [876]	24.49 [622]	23.70 [602]	NO

what **great systems** are built on.™

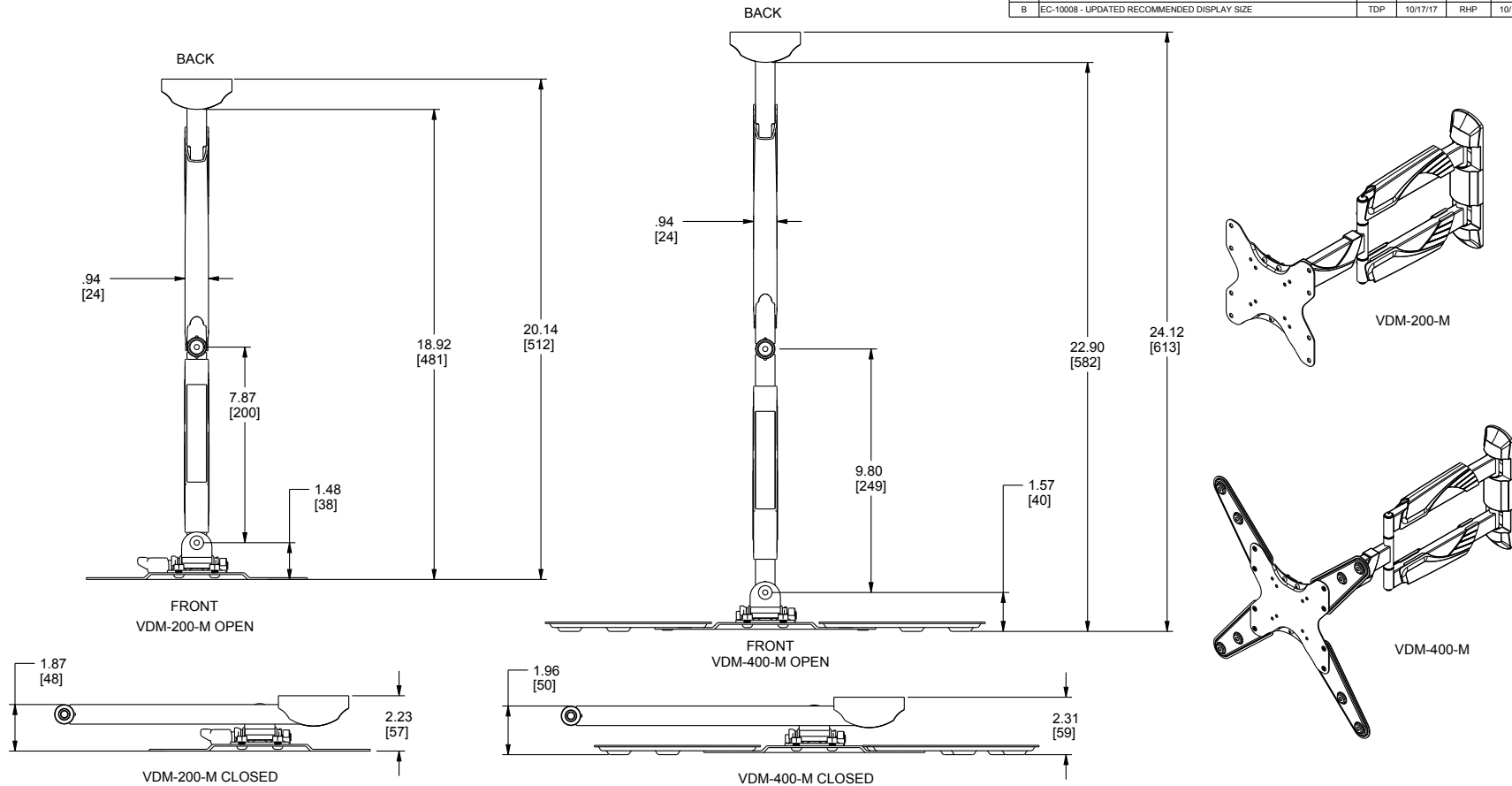
A brand of **legrand**

Middle Atlantic Products
middleatlantic.com | middleatlantic.ca

VDM Series vision display mounts

basic dimensions

REV	DESCRIPTION	REV BY	REV DATE	APP'D BY	DATE APP.
-	PRODUCTION RELEASE	///	////	JP	09/02/16
A	EC-9064: VDM-200-M CAPACITY CHANGED FROM 40 LBS. TO 50 LBS.	DDL	09/15/16	RHP	09/15/16
B	EC-10008 - UPDATED RECOMMENDED DISPLAY SIZE	TDP	10/17/17	RHP	10/17/17



MODEL #	CAPACITY LBS/KG	VESA SIZE RANGE	RECOMMENDED DISPLAY SIZE	PRX-MP-9X12 (SMALL COMPONENT ACCESSORY PLATE) INCLUDED
VDM-200-M	50 / 22.7	75x75mm - 200mmx200mm	19"-37"	NO
VDM-400-M	50 / 22.7	75x75mm - 400mmx400mm	22"-46"	YES

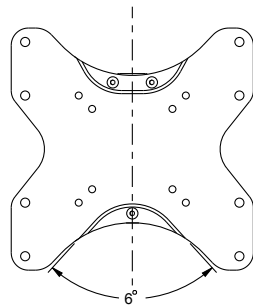
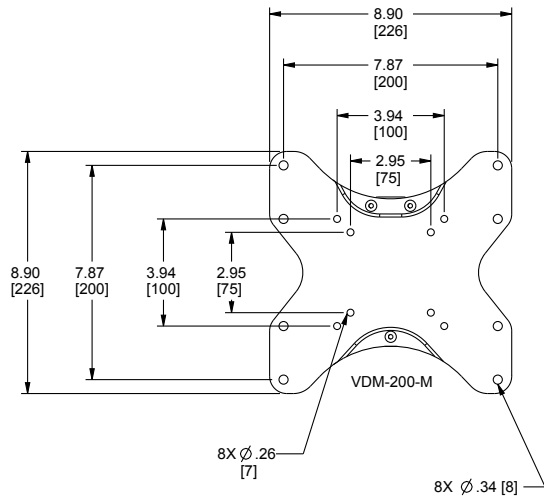
what **great systems** are built on.™

A brand of **legrand**

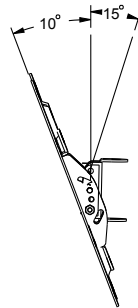
MA
Middle Atlantic Products
middleatlantic.com | middleatlantic.ca

VDM Series vision display mounts

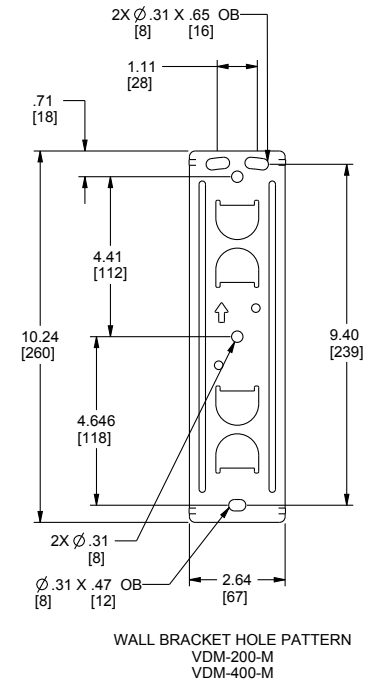
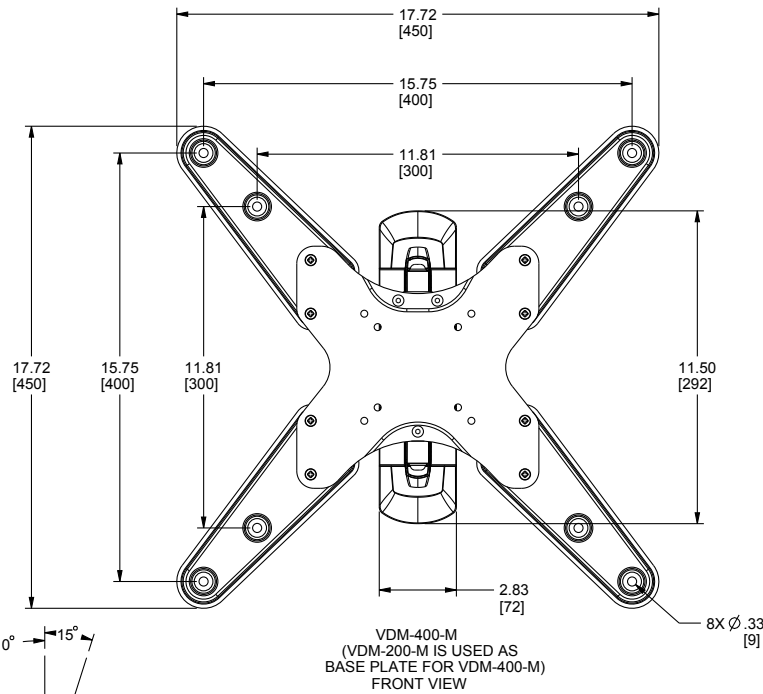
basic dimensions



ROLL TILT ADJUSTMENT
VDM-200-M
VDM-400-M



TILT ADJUSTMENT
VDM-200-M
VDM-400-M



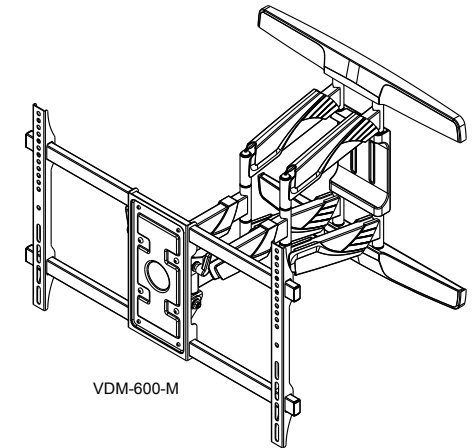
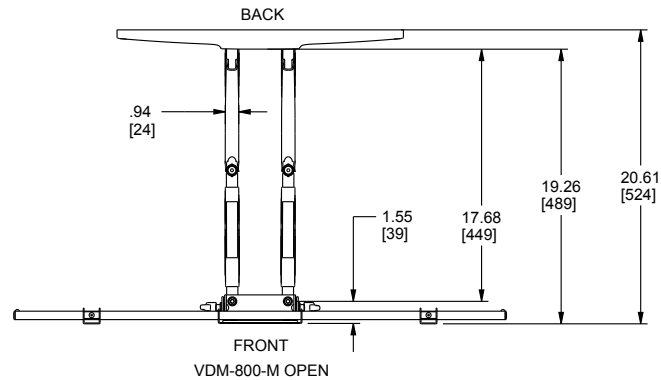
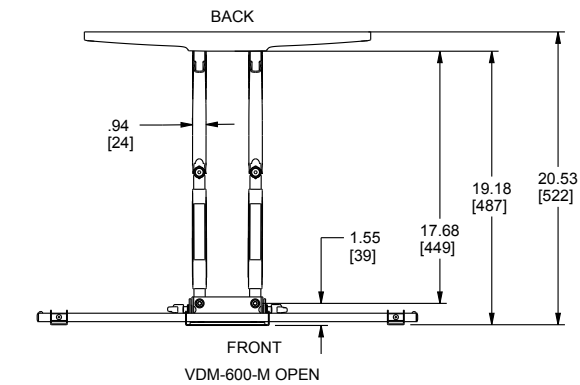
what **great systems** are built on.™

A brand of **legrand**

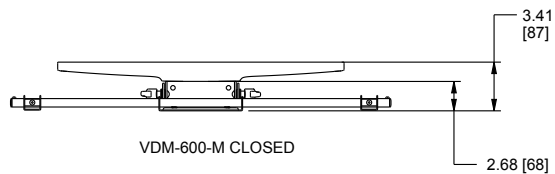
Middle Atlantic Products
middleatlantic.com | middleatlantic.ca

VDM Series vision display mounts

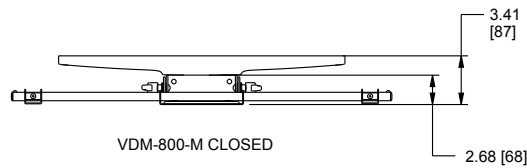
basic dimensions



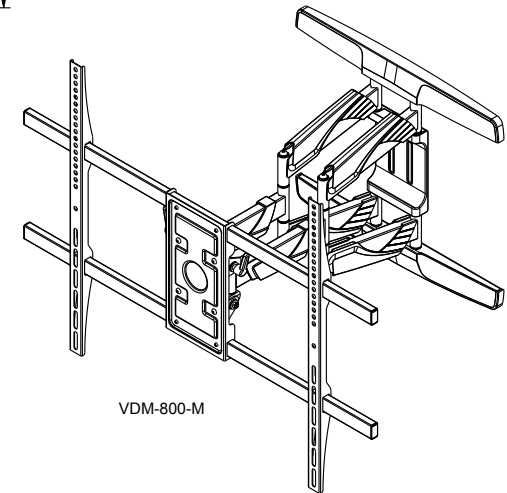
VDM-600-M



VDM-600-M CLOSED



VDM-800-M CLOSED



VDM-800-M

MODEL #	CAPACITY LBS/KG	VESA SIZE RANGE	RECOMMENDED DISPLAY SIZE	PRX-MP-9X12 (SMALL COMPONENT ACCESSORY PLATE) INCLUDED
VDM-600-M	100 / 45.4	200x200mm - 600x400mm	40"-70"	YES
VDM-800-M	150 / 68.0	200x200mm - 800x600mm	50"-90"	YES

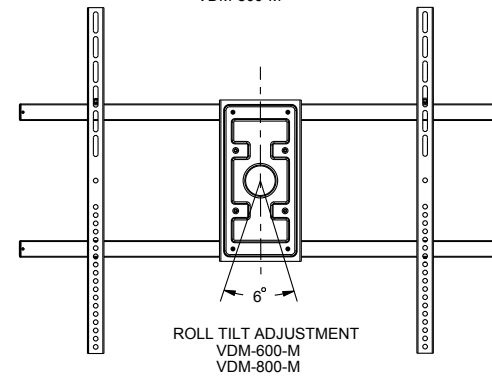
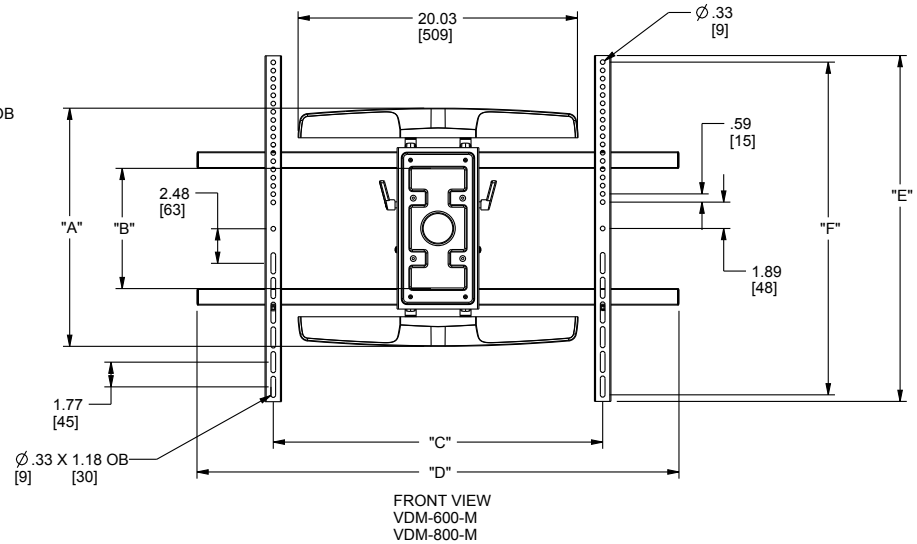
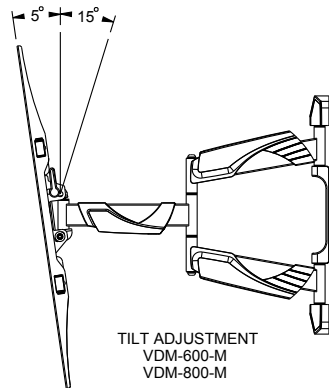
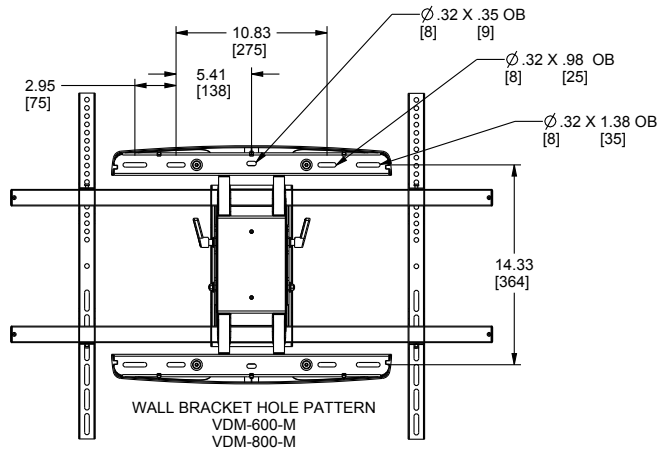
what **great systems** are built on.™

A brand of **legrand**

Middle Atlantic Products
middleatlantic.com | middleatlantic.ca

VDM Series vision display mounts

basic dimensions



MODEL #	"A"	"B"	"C" RANGE	"D"	"E"	"F"
VDM-600-M	17.08 [434]	8.62 [219]	7.87 [200] - 24.80 [630]	26.69 [678]	17.13 [435]	16.18 [411]
VDM-800-M	17.08 [434]	8.62 [219]	7.87 [200] - 32.68 [830]	34.56 [878]	24.80 [630]	23.86 [606]

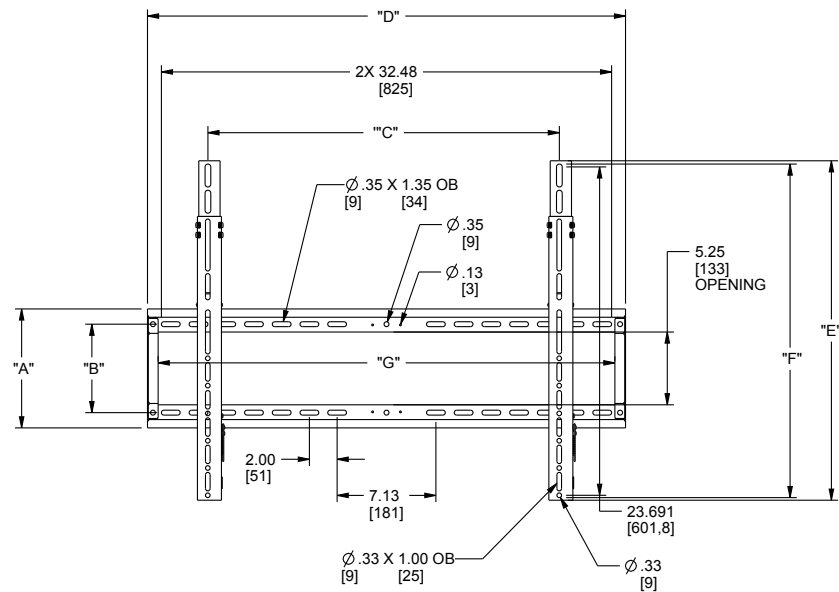
what **great systems** are built on.™

A brand of **legrand**

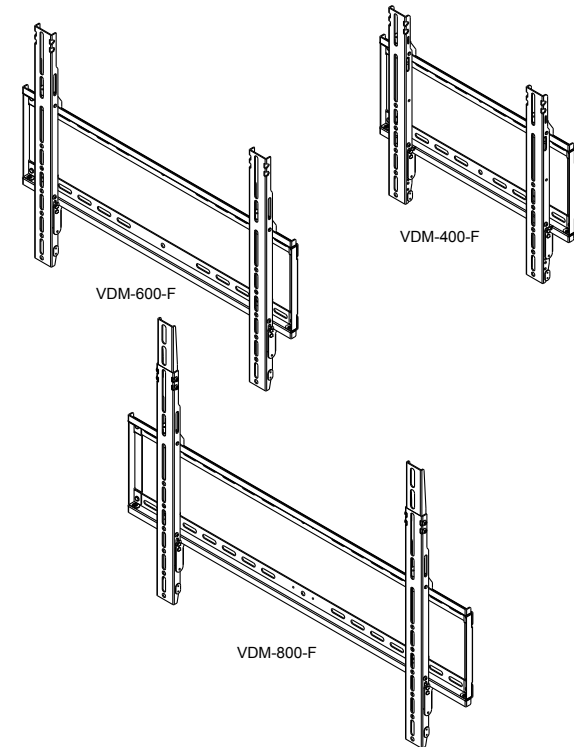
Middle Atlantic Products
middleatlantic.com | middleatlantic.ca

VDM Series vision display mounts

basic dimensions



REV	DESCRIPTION	REV BY	REV DATE	APP'D BY	DATE APP.
-	PRODUCTION RELEASE	///	///	JP	09/02/16
A	EC-10008 - UPDATED RECOMMENDED DISPLAY SIZE	TDP	10/17/17	RHP	10/17/17



MODEL #	CAPACITY LBS/KG	VESA SIZE RANGE	RECOMMENDED DISPLAY SIZE	"A"	"B"	"C" RANGE	"D"	"E"	"F"	"G"	PRX-MP-9X12 (SMALL COMPONENT ACCESSORY PLATE) INCLUDED
VDM-400-F	150 / 68.0	75x75mm - 400x400mm	37"-50"	8.58 [218]	6.38 [162]	1.70 [42] - 17.20 [436]	19.30 [490]	16.56 [420]	15.85 [402]	17.76 [451]	YES
VDM-600-F	180 / 81.7	75x75mm - 600x500mm	42"-70"	8.58 [218]	6.38 [162]	1.70 [42] - 25.50 [648]	27.40 [696]	20.47 [520]	19.76 [502]	25.87 [657]	YES
VDM-800-F	200 / 90.7	75x75mm - 800x600mm	50"-90"	8.58 [218]	6.38 [162]	1.70 [42] - 32.60 [828]	34.50 [876]	24.49 [622]	23.69 [602]	32.95 [837]	YES

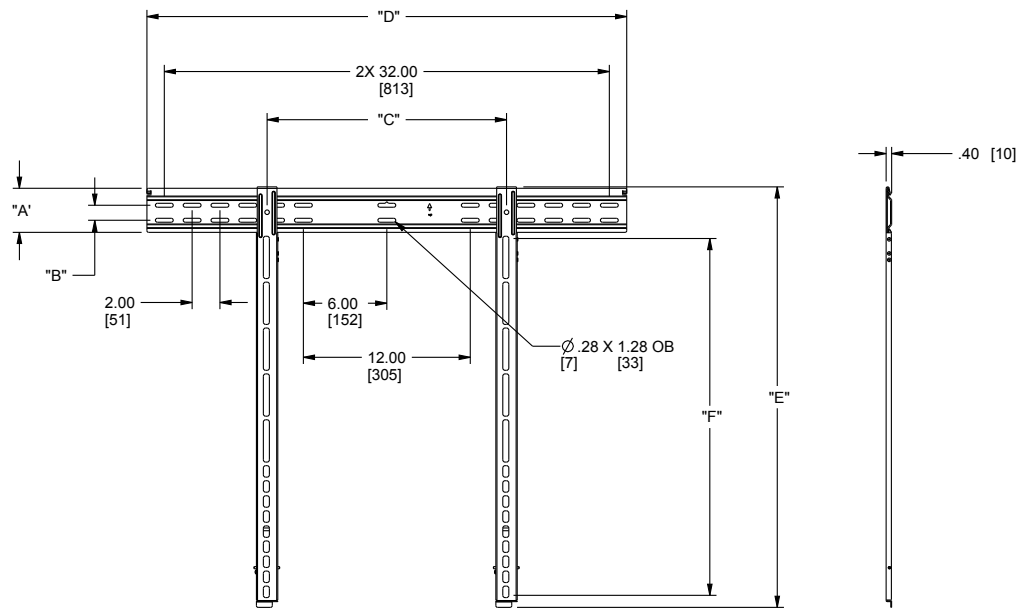
what **great systems** are built on.™

A brand of **legrand**

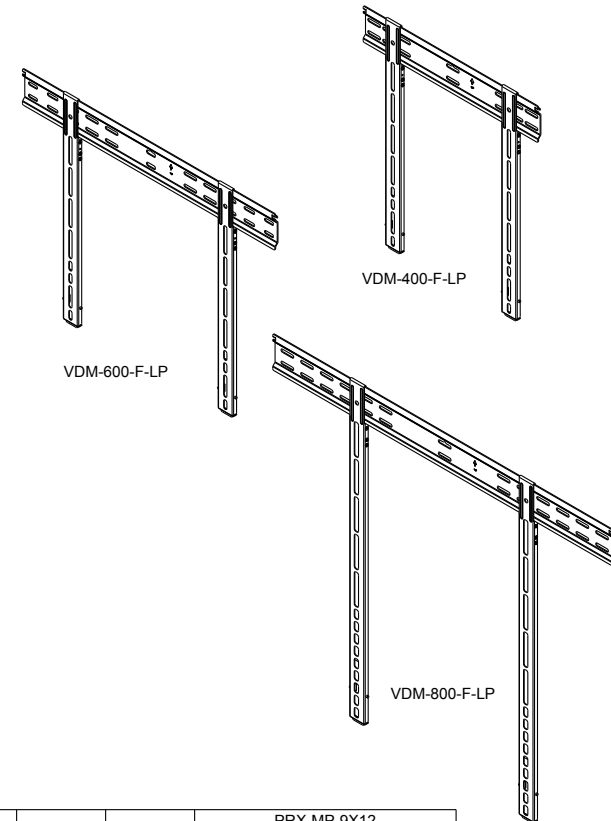
Middle Atlantic Products
middleatlantic.com | middleatlantic.ca

VDM Series vision display mounts

basic dimensions



REV	DESCRIPTION	REV BY	REV DATE	APP'D BY	DATE APP.
-	PRODUCTION RELEASE	///	////	JP	09/02/16
A	EC-10008 - UPDATED RECOMMENDED DISPLAY SIZE	TDP	10/17/17	RHP	10/17/17



MODEL #	CAPACITY LBS/KG	VESA SIZE RANGE	RECOMMENDED DISPLAY SIZE	"A"	"B"	"C" RANGE	"D"	"E"	"F"	PRX-MP-9X12 (SMALL COMPONENT ACCESSORY PLATE) INCLUDED
VDM-400-F-LP	80 / 36.3	75x75mm - 400x400mm	42"-50"	3.17 [81]	1.08 [28]	1.42 [36] - 15.75 [400]	17.76 [451]	20.40 [519]	15.82 [402]	NO
VDM-600-F-LP	100 / 45.4	75x75mm - 600x400mm	42"-70"	3.17 [81]	1.08 [28]	1.42 [36] - 23.70 [602]	25.67 [652]	20.40 [519]	15.83 [402]	NO
VDM-800-F-LP	150 / 68.0	75x75mm - 800x600mm	65"-90"	3.17 [81]	1.08 [28]	1.42 [36] - 32.50 [826]	34.50 [876]	30.24 [768]	25.82 [655]	NO

what **great systems** are built on.™

A brand of **legrand**

Middle Atlantic Products
middleatlantic.com | middleatlantic.ca