

# plura®

## LCM-3G Series

Affordable General Use Broadcast Monitor

7" 9" 19" 23" 32" 47" 82"

3Gb/s

HDTV



LCM-119-3G



LCM-132-3G

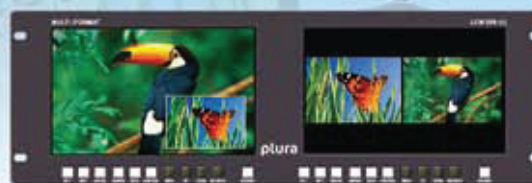
LCM-147-3G and LCM-182-3G (Not Shown)



LCM-123-3G



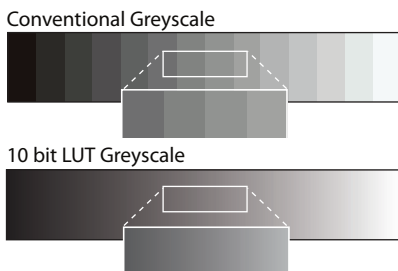
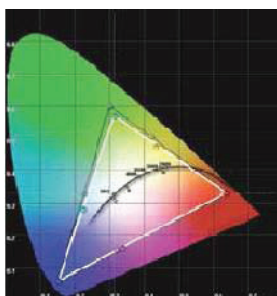
LCM-207-3G & LCM-307-3G (Quadruple 4" Input Displays)



LCM-209-3G (Quadruple 5" Input Displays)

### COST EFFECTIVE MULTI FORMAT 3G HD-SDI BROADCAST MONITOR WITH DUAL DISPLAY AND (PIP) PICTURE IN PICTURE CAPABILITY.

*LCM Series consists of high quality HD LCD monitors, specifically designed for use in Broadcast environment ensuring accurate color reproduction in accordance with SMPTE, EBU, REC 709 Broadcast Standards. The standard calibration feature enables gamma, color temperature and white luminance level adjustments to meet all Broadcast standards. The LCM series calibration tool provides 10 bit look up table (LUT) (1024 steps of grayscale)*



EBU-3325 TECH, ITU-R BT. 709, SMPTE, DICOM

[www.PluraBroadcast.com](http://www.PluraBroadcast.com)

### LCM-3G Series Product Highlights:

- LCM-207-3G, 2 x 7" 800 x 480 - 8 bit LED Panels
- LCM-307-3G, 2 x 7" 1024 x 600 - 8 bit LED Panels
- LCM-209-3G, 2 x 9" 800 x 480 - 8 bit LED Panels
- LCM-119-3G, 19" 1366x768 - 8 bit LED Panel
- LCM-123-3G, 23" 1920x1080 - 8 bit LED Panel
- LCM-132-3G, 32" 1920x1080 - 10 bit LED Panel
- LCM-147-3G, 47" 1920x1080 - 10 bit LED Panel
- LCM-182-3G, 82" 1920x1080 - 10 bit LED Panel
- 3Gb/s ready - 1080/60P
- 2 x Auto-detect with active loops (3Gb/s ~ 1.485Gb/s ~ 270Mb/s)
- Complies with EBU-2330 TECH, SMPTE-C and ITU-R BT.709 Standards
- (ICAC) - Plura Intelligent Connection for Alignment & Calibration
- RGB, YUV, Y/C, Composite, UXGA, DVI & HDMI(DHCP)
- Cutting edge De-interlacing and Scaling Technology
- Fast Response Time for high motion video
- 12 bit Digital Signal Processing
- 178° Viewing Angle Display
- Color Temperature – User adjustable (11000K TO 3200K)
- Various and User defined Markers Display, Safe Area in HD & SD
- Picture and Picture (PaP), Picture in Picture (PiP) display / Blend
- Third-party Tally systems support
- Underscan / Overscan / Normal / Zoom
- Internal Test Pattern mode
- Ethernet & Serial Wall Remote Control
- Intuitive OSD Display, Graphic based, 6 Languages (UNICODE System)
- OPTIONS: Rack Mount for (LCM-119-3G)~6RU & (LCM-123-3G)~7RU

# PBP/PIP, FREEZE AND ZOOM FUNCTIONS WITH TWO 3G HD-SDI INPUTS

These functions are available with two video side-by-side and picture in picture.



LCM-119-3G



LCM-123-3G



LCM-132-3G

LCM-147-3G  
and  
LCM-182-3G  
(Not Shown)

## MULTI-FORMAT SIGNAL

Supports HD/SD-SDI (3GHD-SDI, 1.5 G HD), Composite, Component, VGA, DVI, HDMI with HDCP, RGB and S-Video formats.

## SDI INPUT SIGNAL FORMAT:

SMPTE-425M, SMPTE-274M / SMPTE-372M / SMPTE-296M / SMPTE-260M / SMPTE-125M

## ETHERNET / SERIAL TALLY SUPPORT

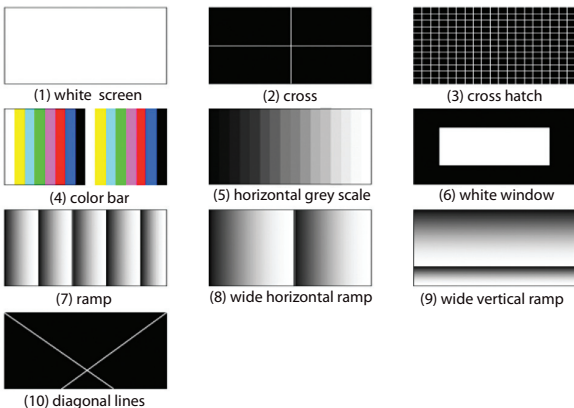
LCM supports and integrates with TSL TallyMan and/or Image Video Tally Systems via Ethernet or Serial protocols.

## AUTO CALIBRATION FUNCTION

LCM series offers auto calibration functionality using Freeware tool. All monitors run through an intensive and full calibration process. LCM series offers accurate luminance uniformity levels and confirm with SMPTE-C, EBU-3325 & REC709 color space standards.

## INTERNAL PATTERN TEST MODE

Various Internal Test Patterns are available through OSD menu.

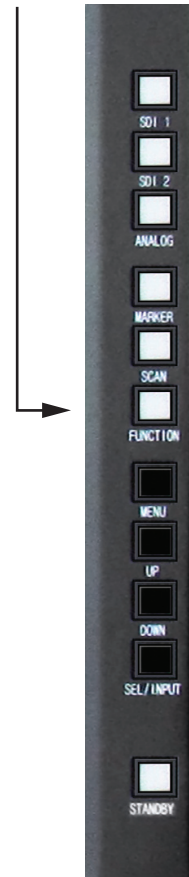
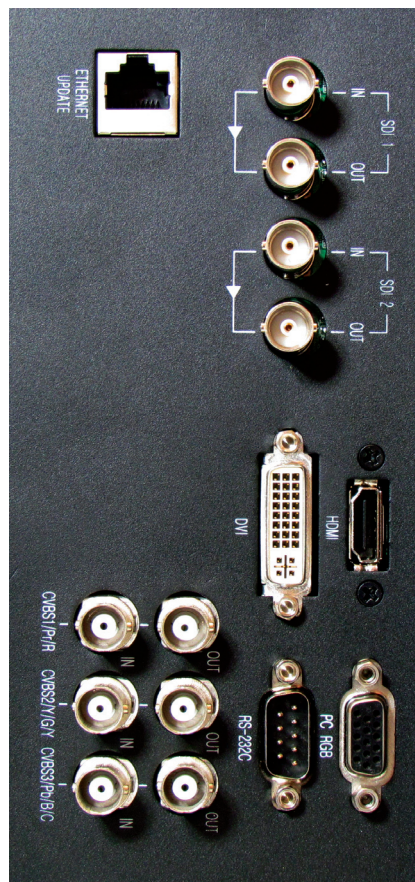


## CONNECTIVITY

3G HD-SDI, HDMI, DVI, CCVS, Component, S-Video

## FRONT KEYS ON LCM-132-3G (above)

LCM-119-3G, LCM-123-3G

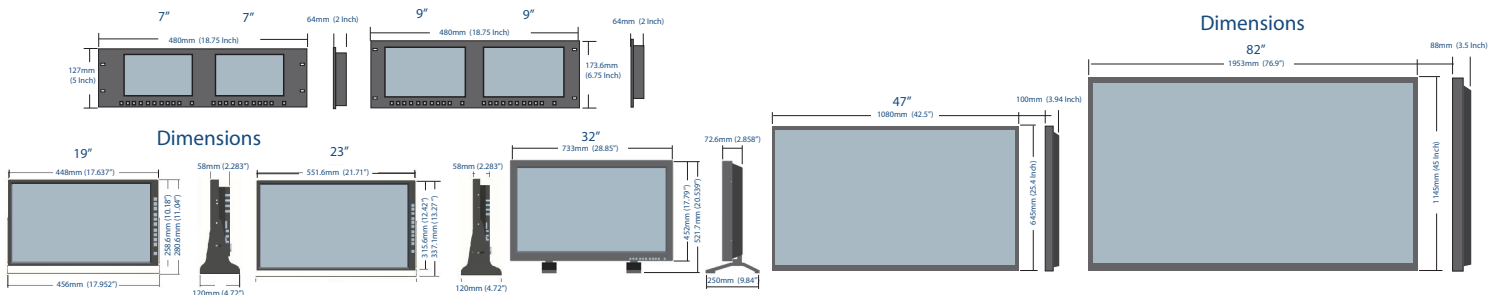




# LCM-3G-Series Specifications

Function		LCM-207-3G (2x7")	LCM-209-3G (2x9")	LCM-119-3G (19")	LCM-123-3G (23")	LCM-132-3G (32")	LCM-147-3G (47")	LCM-182-3G (82")
INPUT	HDMI	2 x 1 EA. HDMI In, (With HDCP) 19pin Female			1 EA. HDMI In, (With HDCP) 19pin Female			
	DVI	N.A.			1 EA. DVI In, 24 Pin Female			
	HD/SD-SDI	2 x 2 EA. 3G HD/SD-SDI			2 EA. 3G HD/SD-SDI			
	D-Sub	N.A.			1 EA. RGBHV (VGA) In, 15 Pin Female			
	9 P D -Sub	2 x 2 EA. RS-232 In 9 Pin Male			2 EA. RS-232 In 9 Pin Male			
	BNC	2 x 3 EA. Component In (Y,Pb,Pr)			3 EA. Component In (Y,Pb,Pr)			
	BNC	2 x 2 EA. S-Video In (Y,C)			2 EA. S-Video In (Y,C)			
	BNC	2 x 1 EA. Composite In (CVBS)			1 EA. Composite In (CVBS)			
OUTPUT	HD/SD-SDI	2 x 2 EA. 3G HD/SD-SDI			2 EA. 3G HD/SD-SDI			
	Analog Loop Output	2 x 3 EA. 75ΩBNC			3 EA. 75ΩBNC			
INPUT SIGNAL	DVI	N.A.			640 x 480 up to 1920 x 1080.			
	HDMI	H Freq Range : 22~82KHz, V Freq Range : 55~90Hz, 640 x 480 up to 1920 x 1080.						
	PC-RGB	640 x 480 up to 1920 x 1080. SOG sync support						
	HD/SDI	3G Signal						
ANALOG INPUT FORMAT	Composite	1.0Vp-p, C : 0.7Vp-p						
	S-Video	Y : 1.0Vp-p, C : 0.7Vp-p						
	Component	Y : 1.0Vp-p, Pb : 0.7Vp-p, Pr : 0.7Vp-p						
	D-Sub	1.0Vpp (with Sync)						
DIGITAL INPUT FORMAT	SMPTE-425M(3G)	1920x1080P (50/60)						
	SMPTE-292M	1920x1080i ( 50/59.94/60 )						
		1920x1080P (30Psf/25Psf/24Psf30/25/24)						
	SMPTE-372M	1080P (30/29.97/25/24/23.98)						
		1080i (29.97/25/24/23.98)						
		720P (60/59.94/50)						
	SMPTE-296M	1280x720P (50/59.94/60)						
	SMPTE-259M/C	480i (59.94)						
		576i (50)						
	Component	640 x 480 up to 1920 x 1080p						
DVI, VGA, HDMI INPUT SIGNAL FORMAT		VESA Standard						
		1920 x 1080 (60P,60i,50i)						
		1920 x 1080 (25P,24p,23p)						
I/O PORT	Ethernet Port	RJ-45 8 Pin Ethernet Port, 100Mbps, LAN to Serial Support for Wall control Application						
	Serial Update	9Pin D-sub, Remote, Update, Serial Interface						
COLOR COORDINATE	Color space	EBU, SMPTE-C, IBT-709, NTSC, Native						
LCD	Size	7" (2 x LCD)	9" (2 x LCD)	19"	23"	32"	47"	82"
	Resolution	800 X 480 (16:10)	800 X 480 (16:10)	1366 X 768 (16:9)	1920 X 1080 (16:9)	1920 X 1080 (16:9)	1920 X 1080 (16:9)	1920 X 1080 (16:9)
	Pixel Pitch (V) x (H)	0.1905x0.1905mm	0.2327x0.2475mm	0.315x0.3315mm	0.2655x0.2655mm	0.3637x0.3637mm	0.5415x0.5415mm	940.5 x 940.5mm
	Color	16.7 M colors	16.7 M colors	16.7 M colors	16.7 M colors	16.7 M colors	16.7 M colors	16.7 M Colors
	Viewing Angle (deg)	R/L: 140, U/D: 140	R/L: 140, U/D: 140	R/L:178, U/D:178	R/L:178, U/D:178	R/L:178, U/D:178	R/L:178, U/D:178	R/L:178, U/D:178
	Luminance of White	350 cd/m2	350 cd/m2	300 cd/m	300 cd/m	400 cd/m	450 cd/m	450 cd/m
	Contrast	700 : 1	700 : 1	1000 : 1	1000 : 1	1000 : 1	4000 : 1	5000 : 1
	Response Time	30 msec	30 msec	5.5 msec	10 msec	6 msec	6 msec	6 msec
	Display Area	152.4 x 91.44mm	196.8 x 118.08mm	430.4x254.6mm	509.76x286.74mm	698.4x392.85mm	1040.48 x 585.27mm	1805.76 x 1015.74mm
	POWER REQUIREMENTS	DC 12V/5.0A			AC100-230V,50/60Hz			
ATC FOR RELIABILITY	Automatic Temperature Control							
	80 x 25mm BLDC Cooling Fan							
OPERATING TEMPERATURE & HUMIDITY	0°C ~40°C(32°F~104°F) ,20% ~ 80% RH							
WEIGHT	2.494 KG ( 5.5 lbs)	3.175 KG ( 7.0 lbs)	3.628 KG ( 8 lbs)	4.989 KG ( 11.5 lbs)	13.608 KG ( 30 lbs)	22.6 KG (50 lbs)	120 KG (265 lbs)	
DIMENSION (W*H*D*) w/o Box & Stand	480x127x64mm	480x173.6x64 mm	448x258x58mm	551.6x315.6x58 mm	733x452x72.6mm	1080x645x100mm	1862.4 x 1111 x 75mm	
	18.75x5.0x2.0Inch	18.75x6.75x2.0Inch	17.6x10.18x2.28Inch	21.7x12.4x2.28 Inch	28.85x17.795x2.85Inch	42.5x25.4x3.94Inch	73.3x43.75x2.95Inch	
Accessories	Power Cord & Rackmount				Power Cord & Desk Stand			

Please note that the technical details shown here are provisional specifications (as of Jan 2017) The information is subject to change without notice.



# LCM-3G Series

Affordable General Use Broadcast Monitor

## WALL CONTROL SOFTWARE VIA ETHERNET AND/OR SERIAL PROTOCOLS

Wall control system is designed to control, operate and update firmware for multiple monitor/s remotely, i.e user can control remotely all features and functionalities of one or multiple monitors over Ethernet or Serial RS 232.

## SUPERIOR BLACK LEVELS & WIDE VIEW ANGLE

Black Color Level Performance <Less 2.5 cd/m2 and Wide Viewing Angle up to 178 degrees.

## DE-INTERLACING AND SCALING TECHNOLOGY

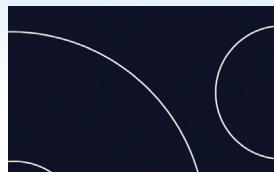
LCM series is equipped with Cutting edge De-Interlacing and Scaling Technology using Motion Adaptive De-Interlacing. This high motion detection accuracy technology greatly improves image quality for both static and fast moving objects. Hardware architecture is very flexible suited to quick installation.



CIRCLE PATTERN



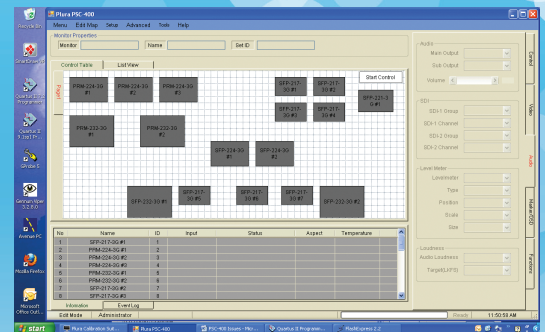
COMPETITORS



LCM Series

## GAMMA AND COLOR TEMPERATURE ADJUSTMENT

LCM Series can adjust Gamma values between 1.8~3.0 with auto calibration software using Eyeone, K-10, Minolta CA-210, CA-310 or JETIPROBE. Gamma Setting Value: 1.8~3.0 Color Temperature Mode: 3200K, 5400K, 6500K, 9300K, 11000K, User

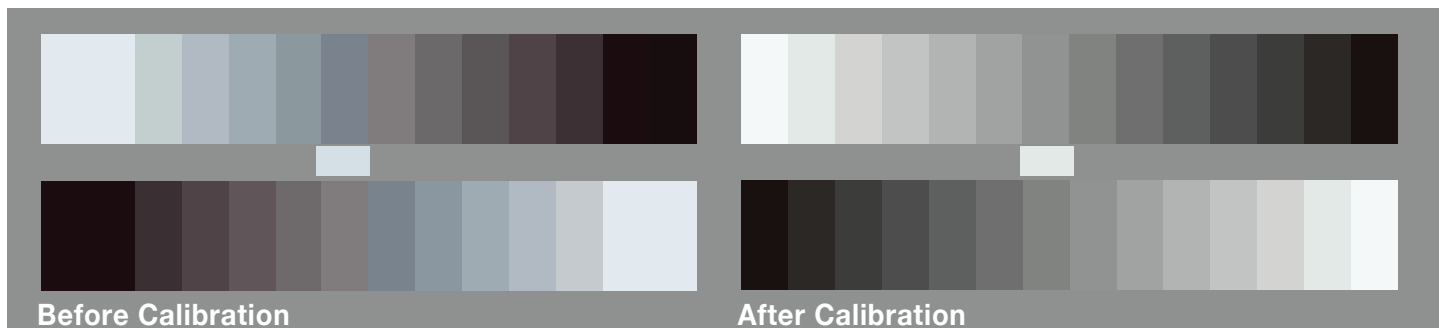


PSC-400 - Plura System Controller



## DUAL 3G HD-SDI SIGNAL INTERFACE

LCM -3G Series conforms with 3G HD-SDI, SD-SDI and SMPTE-425 signal formats.



Before Calibration

After Calibration