



900MHz 6 dBi Yagi Directional Antenna

Product Specifications

PC-ANT-DIR906

Overview

The PC-ANT-DIR906 is a high-performance 900MHz 6dBi Yagi directional antenna ideally suited for Tempest BaseStation/transceiver and CrewCom transceiver applications. This antenna is especially useful when very specific coverage areas and minimized external interference are required.

Key Features

- 6 dBi of gain
- Anodized aluminum construction
- All weather operation
- Heavy-duty elements
- 15 in. (38.1 cm) low loss coax lead
- Can be installed for either vertical or horizontal polarization
- 1/8 in. (0.32 cm) thick plated steel mounting plate
- RoHS compliant

Manufacturer Specifications*

Frequency	824–960 MHz
Gain	6 dBi
Polarization	Horizontal or Vertical
Horizontal Beam Width	100° (Typical)
Vertical Beam Width	60° (Typical)
Front to Back Ratio	14 dB
Impedance	50 Ω
Max. Input Power	100 W
VSWR	less than 1.5:1 average
Weight	1.56 lbs (0.71 kg)
Length	14.2 in. (0.36 m)
Mounting	2 in. (51 mm) diameter mast maximum
Operating Temperature	-40°C to 85° C (-40°F to 185°F)
Lightning Protection	DC Short
Connector	N-Female
Wind Survival	135 mph (217 kmph)

What's in the Box?

- PC-ANT-DIR906 (1) 900MHz 6 dBi Yagi Directional Antenna and U-bolt mounting hardware

Accessories

- PC-ANTCABLE 4 ft. cable (1.23 m)
- PC-ANTCABLE-10 10 ft. cable (3.04 m)
- PC-ANTCAB-20UF 20 ft. cable (6.09 m)
- PC-ANTCAB-50UF 50 ft. cable (15.24 m)

Kits

- PAN-YA906-KIT Includes (2) 900MHz 6 dBi Yagi Directional Antennas and all necessary mounting hardware and cables.

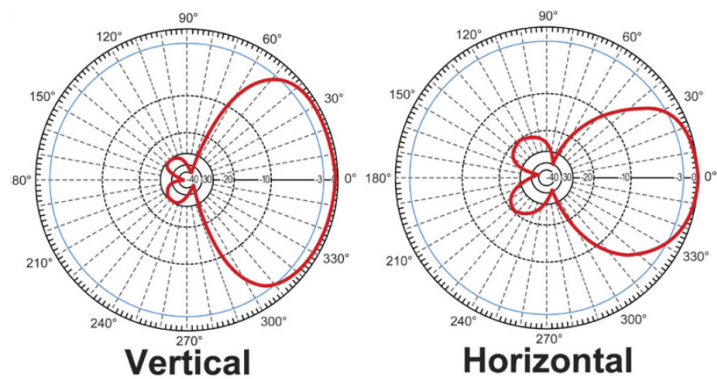


Figure 1: Vertical and Horizontal Polar Patterns

Wind Loading Data

Wind Speed	Loading
100	5.6 lbs (2.5 kg)
120	8.8 lbs (4 kg)
100 with 1/2" Radial Ice	8 lbs (3.63 kg)

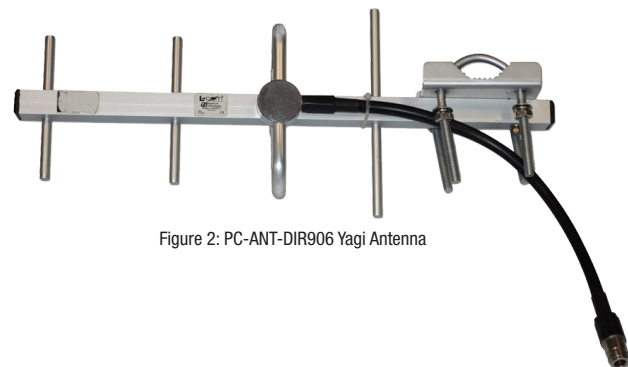


Figure 2: PC-ANT-DIR906 Yagi Antenna