

Broadcast Technologies ... Redefined!™

# plura®

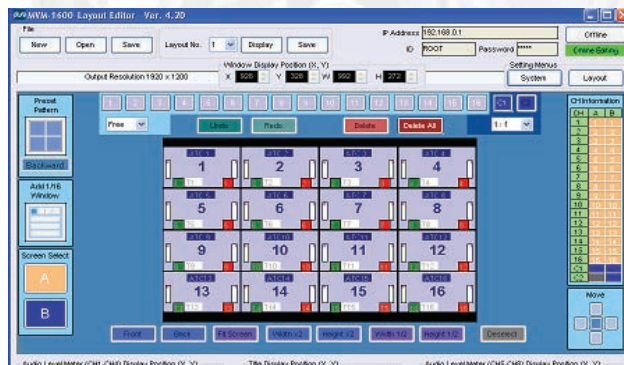
## MVM-Series

Integrated 4-16 Channel Multiview LCD Multi-format Monitor

24" 40" 46"



**PLURA integrated multi-view monitors** are built with Grade A TFT Panels and feature 1:1 pixel to pixel scaling, Intelligent connection for Automatic Alignment and Calibration and Adjustable Color-metry and Gamma Correction. The Built-in multi-viewer feature saves space, time and money. The Ethernet remote configuration software tool enables users to store & recall multiple conventional and user defined Layouts.



**MVM 1600 Layout Software**



**MVM-124 with Live Streaming Capability**

### Supports HD-SDI, SD-SDI & Analog Composite with automatic signal detection and Web Server.

- 24 - 46" Multi-Format Digital Broadcast Monitor
- Fully integrated Multi-format 4 to 16 inputs with Full HD monitor resolution.
- Up to 16 auto-detect HD-SDI, SDI & Analog inputs (asynchronous input is supported).
- Additional 2 HDSDI and 1 x DVI inputs used as stand alone PBM Broadcast Monitor ( for MVM-124 only)
- Intelligent connection for Automatic Alignment and Calibration.
- Mixed inputs of different frame rate are supported.
- 10 bit resolution for digital inputs.
- Low processing delay: 1 frame.
- Embedded Audio Metering on HD/SD-SDI, 8 channels per input.
- Includes layout S/W to store and recall configuration settings.
- Dynamic and static UMD support, LTC time-code, Tally and Clock.
- On screen alarms for audio and video, fault detection
- Built-In Web Server up to 60 fps.
- VESA mounting capable. ( for MVM-124 only )

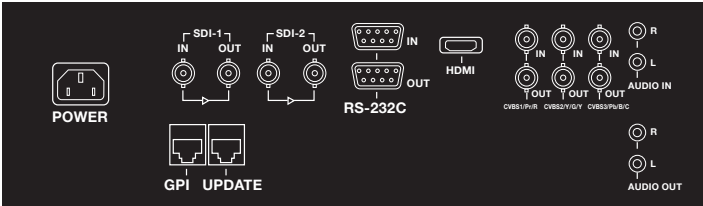
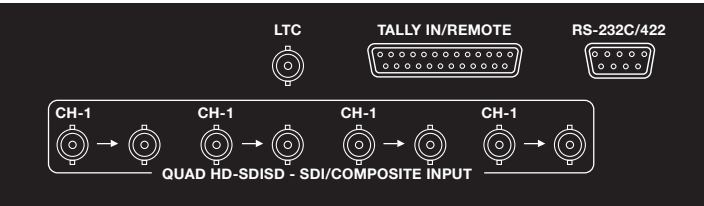
Please note that the technical details shown here are provisional specifications (as of March 2013). This information is subject to change without notice.

Multi-Format Monitors with Built-In Multi-Viewer

Multi-Viewer Processor	
Standards:	HD: 1080/60i, 1080/59.94i, 1080/50i, 720/60p, 720/59.94p, 720/50p SD: 525/60 (NTSC), 625/50 (PAL)
Video Inputs:	4-16 inputs with loop output from any (except from the MVM-147-16 XX) of the signals below (mixed input and asynchronous input are possible) HD-SDI: 1.485Gbps or 1.485/1.001Gbps, 75, BNC SD-SDI: 270 Mbps, 75, BNC Analog composite: 1.0 Vp-p, 75, BNC
DVI Inputs	Input Channel 2-4 Channels DVI - Interface TMDS Single Link (DVI Standard) DVI Digital Mode 640 x 480 upt to 1920 x 1200
Monitor DVI Inputs	Input Channel 1 Channel DVI - Interface TMDS Single Link (DVI Standard) DVI Digital Mode 640 x 480 upt to 1920 x 1200
I/O Delay:	1 Frame
Character Display:	Display characters: Maximum of 16 characters x 1 line per input channel
Tally Display:	Display in each input screen frame (red or green)
Audio Level Display:	Display in each input screen frame, 8 channels of embedded audio signals
Time Display:	Enables display of the current time (internal clock)
Interfaces:	RS-232C/RS-422: D-sub 9-pin (male), 1 line Transmission rate: 9600/19200/38400 bps, data length: 8 bits, stop bit: 1 bit, parity: ONE/ODD/EVEN TALLY IN: D-sub 25-pin (female) *Shared with REMOTE IN 4 inputs x 2 colors (red or green color frame display) TTL negative logic level signal or make-contact input REMOTE IN: D-sub 25-pin (female) *Shared with TALLY IN Switching between full screen and split-screen display TTL negative logic level signal or make-contact input LAN: 10Base-T/100Base-TX, RJ-45 (CAT5 support), 1 line Video transfer: DVI/analog RGB output and transfer of the same screen with size reduction, JPEG compression
Software Layout:	Complete & comprehensive Setting for screen video size, video position, Audio Channels & clock.
Image Processing:	Scanning free scalable to any ratio
Video Processing:	Hi-Res digital adaptive comb filter
Serial Digital Processing:	Native 4:2:2, 10 bit dithering
Aspect Ratio:	16:9 normal, 4:3 selectable
Operation:	OSD Menu, remote control
Remote Operation:	TCP/IP, IR Controller, RS422, USB

Function		MVM -124	MVM -140	MVM-146	MVM-147-16-XX
LCD	Size	24"	40"	46"	46"
	Resolution	1920 x 1200	1920 x 1080	1920 x 1080	1920 x 1080
	Pixel Pitch	0.270 mm	0.4845 mm	0.5415 mm	0.5415 mm
	Color	16.7M	16.7M	16.7M	16.7M
	Viewing Angle	R/L:178° , U/D:178°	R/L:178° , U/D:178°	R/L:178° , U/D:178°	R/L:178° , U/D:178°
	Luminance of White	400 cd	500 cd	450 cd	450 cd
	Contrast	1000 : 1	4000 : 1	4000 : 1	4000 : 1
	Display Area (H X V)	518.4 x 324 mm	885.6 x 498.15 mm	1018.1 x 572.7 mm	1018.1 x 572.7 mm
POWER		AC 100 - 230V/ DC			
POWER CONSUMPTION		1.1A~0.55A (110W)	1.8A~0.82A (180W)	2.2A~1.1A (230W)	2.2A~1.1A (230W)
OPERATING TEMPERATURE		0°C ~ 40°C (32°F~104°F)			
WEIGHT (w/o Stand)		16 kg - 35.275 lbs	35 kg - 77.1 lbs	37.2 kg - 80.3 lbs	37.2 kg - 86.4 lbs
DIMENSIONS (W x H x D) w/o Box & Stand		553.8 x 408 x 114 mm 121.8" x 16.1" x 4.5"	967.5 x 590 x 96.2 mm 38.1" x23.22" x 3.8"	1125 x 674 x 92.5 mm 44.3" x 26.5" x 3.65"	1130 x 711 x 114 mm 44.5" x 28" x 4.5 "
ACCESSORY		Power Cord, Manual, DVI to VGA Adapter, Desk Mount			
OPTION		Wall Bracket, Carrying Case, Rack Mount (MVM-124 only)			

Please note that the technical details shown here are provisional specifications (as of July 2015). This information is subject to change without notice.



MVM-124 4CH Connectivity

www.plurabroadcast.com