

# plura<sup>®</sup>

## PRM-3G Series

The Most Valuable 10-bit Monitor EVER!

17" (LED) 24" (OLED) 10-bit



PRM-217-3G



PRM-224-3G-O

HDTV

Integrated **OLED**

3Gb/s

### PRM-3G Series - Product Highlights:

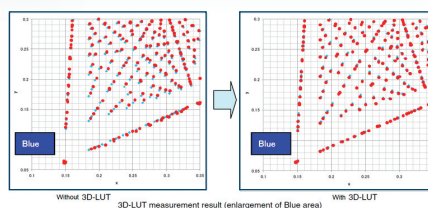
New PRM-3G series including PRM-224-3G offers an elegant slim design integrated with Grade A - 10 BIT OLED 24.5" panel and delivers outstanding BLACK performance, very fast response time for smooth video with virtually NO motion blur, High contrast of 5000:1, wide viewing angle, accurate color reproduction and quality picture consistency that meets all your HD & SD Monitoring applications. PRM-3G series also includes PRM-217-3G, Plura 17" FULL HD 1920x1080 Precision Broadcast LCD Series is built with Grade A - 10 BIT LED 17".

#### 10-Bit Panel



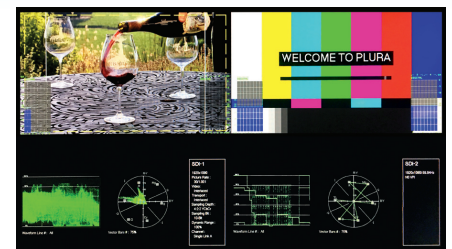
The PRM Series benefits from a powerful and advanced 10-bit panel. While 8-bit panel technology can produce 16.7 million colors, this much larger quantity of data means that the colors you see are more accurate and the transitions between colors are smoother. The result is a much more realistic picture, delivering all the vivid color intensity that was present in the original source.

#### 3D LUT Capability



The PRM-Series offers 17x17x17 - 8 points linear interpolation 3D LUT, 12bit precision which results in superior additive-color-mixing (combination of RGB), and a precise color management environment as demanded by the color grading and graphics applications. The PRM monitor will compensate a certain color at any point on the display throughout the entire levels by using a 3D-LUT.

#### Dual Display Mode



With Dual Waveform & Vector

PRM is equipped with powerful video processor to display concurrently two video inputs with the related Waveform & Vector, 16CH Audio Level Metering, and Timecode. 2048x256 Waveform, 256x256 Vector scope. Dual Waveforms and Vectors supported for SDI1/SDI2. Histogram/Vertical waveform/RGB conversion. Waveform for DVI/HDMI supported. RGB Parade, Waveform have an option to display Luminance & chrominance. Waveform & Vector Full Screen. Display Advanced Waveform & Vector Scope simultaneously with line select.

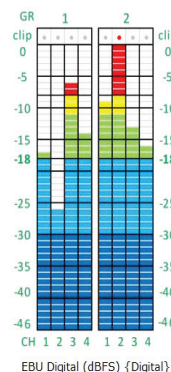
### Powerful Audio Measurement Package

#### LKFS Audio Loudness Mode.



LKFS Audio Loudness Measurement - Digital Loudness Audio Metering with selected channel measurement in LKFS scale.

- ▶ Stereo Analog & 16 CH Embedded Digital Audio Input Support.
- ▶ Advanced and various 16 CH Audio Metering Scales
- ▶ Built-IN Stereo 2 W Speakers,
- ▶ De-embedding Audio, Stereo Analog Audio & 16CH Embedded Digital Audio Input support



### "6" Programmable Presets and other Prominent Features

You may program 6 preset functions to be available at your figure tips without going through the menu. Other great features as Line Mode, Skin tone, Range error, Focus Assist. Color Temperature - User, VAR, Adjustable (11000K TO 3200K), Internal Monitor Display (IMD), Pixel to Pixel Mode, Tally, DC Operation, Display LTC & DVITC time code with line select, Internal Pattern Generator Digital Audio Decoding Picture and Picture (PaP), Picture in Picture (PiP) display / Blend. Various and User defined Markers Display, Safe Area in HD & SD

# PRM-3G Series

The Most Valuable 10-bit Monitor EVER!

## Plura Intelligent Connection for Alignment & Calibration- (ICAC)

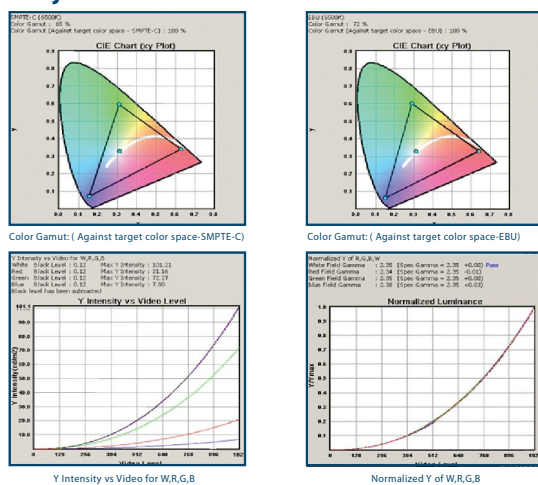
FREE PLURA utility designed for custom Measurements & Calibration with 1024 Steps for all (Digital & Analog Inputs):-

- 1- Luminance of White & Color Temperature.
- 2- Luminance of Black
- 3- Color Scale
- 4- Gamma
- 5- Grayscale Linearity
- 6- Luminance Uniformity
- 7- White Uniformity

## Closed Captioning (708/608) & Teletext 801 / Subtitle OP-47

PRM monitor can decode closed caption streams with 708 Service 1, Service 2, 608 Transcoded CC1,2,3&4, 608 line 21, & 608 ANC. PRM monitor can support Teletext 801 & Subtitle OP-47 for Australia & New Zealand region.

## Adjustable & User Defined Gamma Control

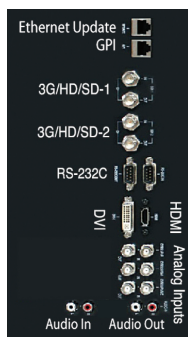


## Connectivity

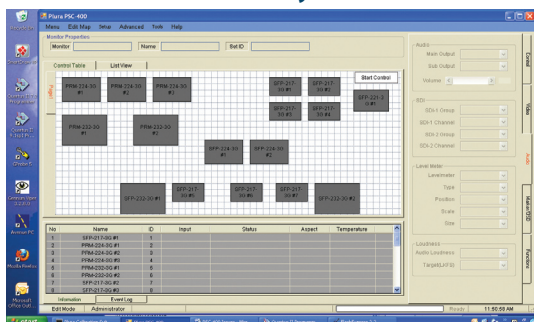
2 x Auto-detect HD-SDI, SDI with active loops (3 Gb/s / 1.485Gb/s / 270Mb/s), 3 x Composite inputs with active loops, 1 x DVI/VGA and 1 x HDMI

## Ethernet, GPI & RS-232 Control

RJ-45 Ethernet, 100Mbps, LAN to Serial supported for wall control applications along with programmable GPI & RS232 Remote Control



## PSC-500 - Plura System Controller



Inclusive Network Controller with Firmware & Cal. File Transfer

## PRM-Series Specifications

	Function	PRM-217-3G	PRM-224-3G
INPUT	SDI Input	2EA, HD/SD Serial Digital , 3Gb/s, 1.485Gb/s, 270Mb/s, BNC Jack	
	Analog Input	3EA, Composite, Component(YPbPr/RGB), BNC Jack	
	S-VIDEO Input	1EA,YC(S-Video), S-Jack	
	DVI / VGA Input	1EA, DVI-I, 24pin, Female	
	HDMI	1EA, HDMI, 19pin Female	
OUTPUT	SDI Output	2EA, BNC, Active Through Output	
	Analog Loop Output	3EA, 75Ω,BNC Jack (Option)	
ANALOG INPUT FORMAT	Composite	1.0Vpp(with sync)	
	YC (S-Video)	Y :1.0Vp-p, C:0.286Vp-p	
	Component	1.0Vpp ( Y with Sync) 0.7Vpp ( Pb/Pr)	
	RGB	1.0Vpp (G with Sync), 0.7Vpp (R/B)	
	DVI - (Analog PC)	H Frequency Range : 22~82KHz, V Frequency Range : 55~90Hz, Maximum Resolution : UXGA at 60Hz, Maximum Pixel Rate : 162MHz - Separate Sync Support	
DIGITAL INPUT FORMAT	SMPTE 428.1M	2048x1080P ( 24/25)	
	SMPTE-425M(3G)	1080p(60/59.94/50/30/29.97/25/24/23.98/30sF/29.97sF25sF/23.98sF) 1080i (60/59.94/50)	
	SMPTE-260M	1920x1035i(60/59.94)	
	SMPTE-292M	1920x1080i (50/59.94/60) 1920x1080P (30Psf/25Psf/24Psf/30/25/24)	
	SMPTE 372M	Dual Link HD-SDI YPbPr(4:2:2) : 1080P(50/59.94/60) Dual Link HD-SDI YpbPr/RGB(4:4:4) 1080P(30/29.97/25/24/23.98) 1080i(29.97/25/24/23.98) 720P(60/59.94/50)	
	SMPTE 296M	1280x720P (50/59.94/60)	
	SMPTE 259M/C	480i(59.94) 576i(50)	
	Component	640 X 480 up to 1920 X 1080p	
	HDMI	H Frequency Range : 22~82KHz, V Frequency Range : 55~90Hz, Maximum Resolution : UXGA at 60Hz ,	
	DVI Digital	Maximum Pixel Rate : 162MHz	
AUDIO INPUT	Input Line	Analog Stereo (RCA Jack)	
	SDI Audio Input	Embedded HD/SD-SDI Audio	
AUDIO OUTPUT	Speaker Output	1EA, L/R, Stereo pin jack	
	Output Line	2EA, 5W+5W	
	Ear-phon Output	1EA, L/R Stereo, 3.5mm pin jack	
	Output Signal	Input Line & De-embedded Audio, 1~ 16CH	
I/O PORT	GPI	1EA, Remote, RJ-45P Jack, GPI-7 Port	
	RS422/485	2EA, RJ-11P Jack, RS-422, Serial interface	
	Ethernet Port	RJ-45 8 pin Ethernet port, 100Mbps, LAN to Serial supported for wall control applications	
	Upgrade Port	D-sub 9 pin female for software upgrade	
	RS232	D-sub 9 pin female	
LCD	Size	17"	24.5"
	Aspect Ratio	16:9	16:9
	Resolution	1920 X 1080	1920 X 1080
	Color	1,073,741,824 colors	1,073,741,824 colors
	Viewing Angle (deg)	Horiz:178(Typ.), Vert.178(Typ.)	Horiz:178(Typ.), Vert.178(Typ.)
	Luminance of White	Max 300 cd/m <sup>2</sup>	Max 250 cd/m <sup>2</sup>
	Contrast	900 : 1	5000 : 1
	Display Area (H X V)	372.9 x 209.7 mm	543.36 x 305.64 mm
	Response Time	Tr=8ms / Tf=8ms	Virtually Zero
POWER REQUIREMENTS		AC 100 V ~ 240 V (60/50 Hz)	
POWER CONSUMPTION		0.65A ~ 0.34A(65W)	1.0A ~ 0.5A(100W)
OPERATING TEMPERATURE		-30°C ~ 40°C (-22°F ~ 104°F)	
OPERATING HUMIDITY		10%RH ~ 85%RH (Non Condensed)	
STORAGE TEMPERATURE		-30°C ~ 60°C (-22°F ~ 140°F)	
STORAGE HUMIDITY		10%RH ~ 85%RH (Non Condensed)	
WEIGHT (w/o Stand & Packing)		7 Kg ~ 15.43 Lbs	14 Kg ~ 30.8 Lbs
DIMENSION (W*H*D) w/o Box & Stand		442 x 310 x 86 mm 17.4 x 12.2 x 3.4 Inch	577 x 425 x 84.2 mm 22.7 x 16.7 x 3.3 Inch
PACKAGING DIMENSION		550 x 435 x 220 mm 21.7 x 17.2 x 8.7 Inch	660 x 523 x 220 mm 26 x 20.6 x 8.7 Inch
ACCESSORY		Power Cord - Desk Stand	
OPTION		Battery Mount - Rackmount - Wall Mount - Carrying Case	

Please note that the technical details shown here are provisional specifications (as of Aug. 2017). This information is subject to change without notice.

[www.plurabroadcast.com](http://www.plurabroadcast.com)

U.S.A. • Germany • S.Korea • U.A.E. • Mexico