



**RDL**<sup>®</sup>  
Radio Design Labs

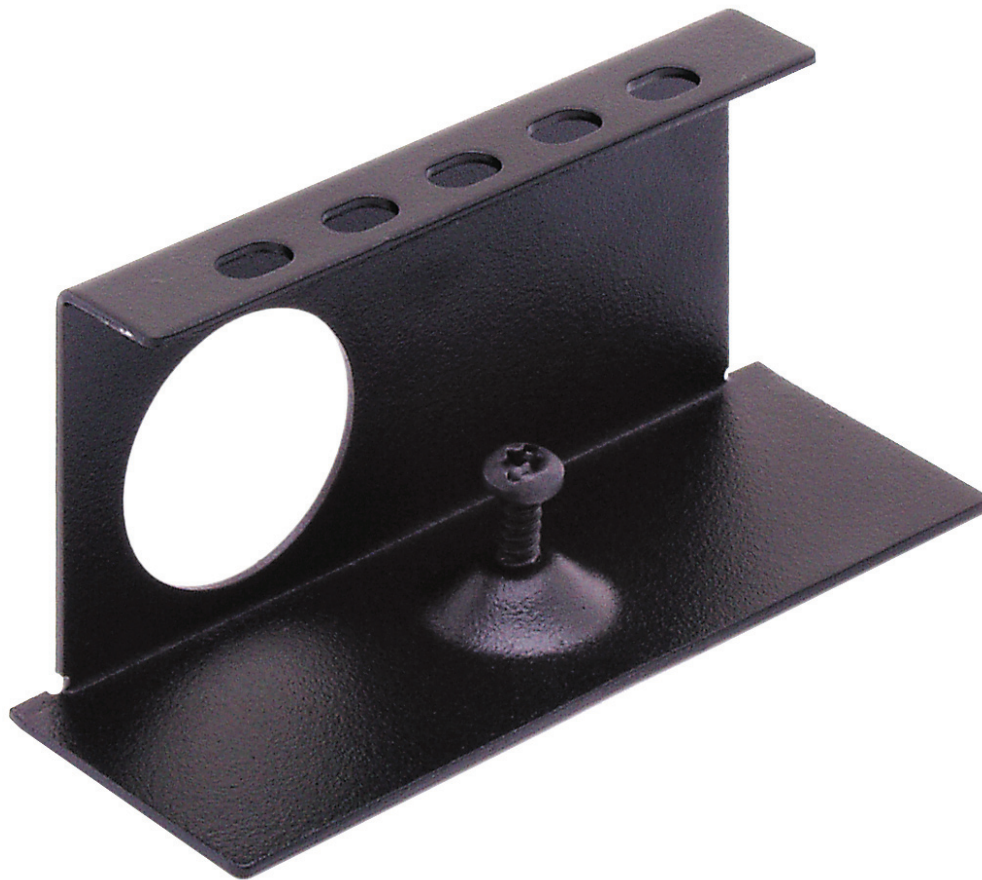
*SPECIALISTS IN PRACTICAL PRECISION ENGINEERING™*

---

## **ACCESSORIES**

**Model FP-CT1**

**Locking Cable Tie Bracket for FP-RRA and FP-RRAH**



The FP-CT1 is a mounting bracket that fits the mounting track on FP-RRA and FP-RRAH rack mount panels. The set screw allows the installer to secure the bracket into position. An FP-CT1 can be secured at each end of an installed FLAT-PAK module, thereby securing the FLAT-PAK in mobile installations. Slots in the front surface of the bracket allow the installer to secure wires and cables in place. The FLAT-PAK power interconnect cables may be installed through the FP-CT1.

**Radio Design Labs Technical Support Centers**  
U.S.A. (800) 933-1780, (928) 778-3554; Fax: (928) 778-3506  
Europe [NH Amsterdam] (+31) 20-6238 983; Fax: (+31) 20-6225-287

RDL • 659 N. 6<sup>th</sup> St. • Prescott, AZ., USA 86301 • (928) 443-9391 • FAX (928) 443-9392 • [www.rdlnet.com](http://www.rdlnet.com)