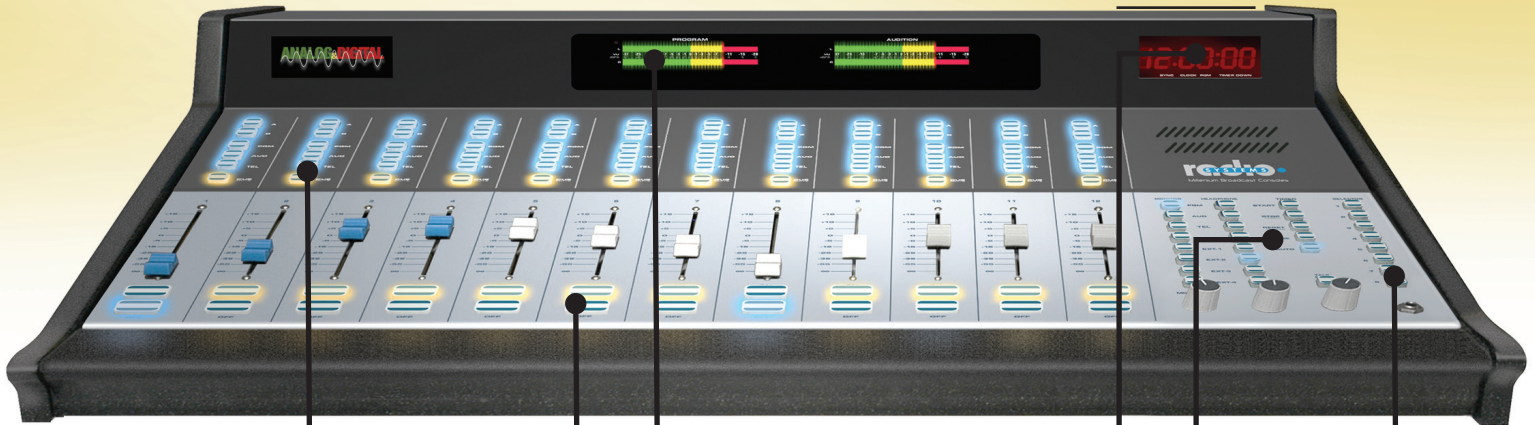


Millenium Hybrid Broadcast Consoles

ANALOG & DIGITAL



Millenium Hybrid Console Model RS-12H shown. Also available in 6, 12 and 18 channel sizes.

Each channel provides 3 output buses (stereo Program, stereo Audition and a mono Telephone send), which can be selected simultaneously for simulcast and mix-minus applications. Inputs on each channel accommodate any combination of mic, line or consumer level inputs with extensive programmable logic states, also selectable by input. Patch points are also provided.

Channel on/off keypad switches are LED illuminated and they control channel audio as well as all logic and control states. Switching is via conductive rubber keypads rated for 1+ million operations.

Two high resolution stereo LED meters with 40 segments and peak indicator.

Millenium Consoles include an accurate time-of-day clock and event timer which also slave to the Radio Systems' CT-2002 Master Clock System.

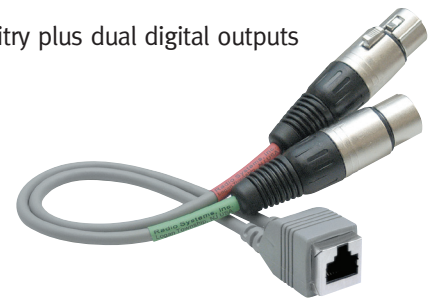
Every console model features a complete monitor section allowing studio monitors and headphones to select any program or cue source, as well as up to 4 remote monitor inputs.

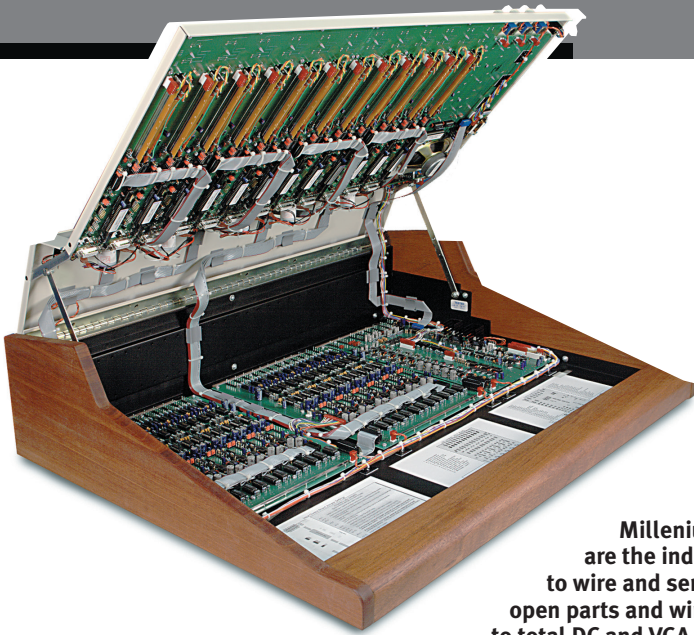
This 8-position switcher is a standard console feature which can be utilized to remote control any external device using the 8 closures and LED indicators provided, or as the control for the optional four source audio switcher or squawk box (intercom) selector card.

Our "Hybrid Analog&Digital" Consoles offer the best of both worlds with dependable analog circuitry plus dual digital outputs for Program and Audition buses and high-resolution LED metering.

Famous StudioHub+ connectivity on all inputs and outputs ensure fast plug-and-play installation.

Radio Systems' Millenium Hybrid Broadcast Consoles are a superb value. Thousands of RS Series Consoles have been sold since they were introduced 15 years ago, and today the Millenium Series carries on this tradition with enhanced capabilities and dramatic new styling. Take a hard look at Millenium broadcast consoles. They offer a dazzling combination of superb specifications, sleek modern styling and a wide range of features—all at unexpectedly low prices!



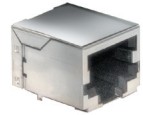


Millenium Consoles are the industry's easiest to wire and service. The unique open parts and wiring layout is due to total DC and VCA control.



Rugged, stand-alone switching power supply provides fusing and LED indication for all power rails. 95 to 220VAC operation

StudioHub+ RJ-45 connectors for plug-and-play wiring via standard CAT-5 cabling.



Specifications

Models available

RS-6H: 6 channel
RS-12H: 12 channel
RS-18H: 18 channel

Audio Inputs

Type: differentially balanced instrumentation amplifiers with gain set jumpers and selectable input attenuators Level: jumper selectable gain settings to accommodate nominal input levels from -60 dBm to +10 dBm. Maximum input level: +22 dBm Impedance: 20K ohms or jumper selected
Headroom: 22 dBm at any level
RJ-45 "StudioHub+" Connectors

Analog Line Outputs

Type: actively balanced
Level: adjustable 0 dBm to +10 dBm, maximum output +22 dBm
Impedance: 100 ohms
Distortion: .008% at nominal operating level, 20 Hz to 20 kHz, Pgm, Aud and Mono outputs signal to noise: 88 dB (or better) below +4 dBm with 0 dBv input level, 20 kHz bandwidth, 600 ohm source impedance (line to line) 74 dB (or better) below +4 dBm output with -50 dBv input level, 20 kHz bandwidth, 150 ohm source impedance (mic to line) Frequency response: +/- .2 dB 20 Hz to 20 kHz
RJ-45 "StudioHub+" Connectors

Digital Line Outputs

Signal Format: AES-3
Signal Compliance: 24 bit
Output Sample Rate: 48 kHz / 44.1 kHz / 32 kHz - Crystal Selected
Digital Reference: Crystal (internal)
Conversions: A/D 24-bit, Delta-Sigma, 256x oversampling
RJ-45 "StudioHub+" Connectors

Monitor Sends

Level: 1 volt rms nominal, 10 volts rms maximum, balanced
RJ-45 "StudioHub+" Connectors

Headphone Output

Level: 1 volt rms nominal, 10 volts rms maximum into 600 ohm headphone
Distortion: .05% typical, .1% maximum
Impedance: 50 ohms to front panel jack, 330 ohms to prefader (external amp) output

Cue Output

2 watts rms into 8 ohm speaker

Dimensions

All consoles are 27 inches deep and 9 inches tall
6 channel: 20.75 inches long
12 channel: 32.75 inches long
18 channel: 44.75 inches long

Available Options

Selector logic card
Enhanced remote interface card
Intercom Card

Four source switcher card
DA Mixer
Four output mix-minus boards
IFB switcher
Colored fader knobs

Available Accessories

Copy stand
StudioHub+ Harness
Source cables - specify type
Spare power supply
Auxiliary relay

Warranty

2 years parts and service
Specifications subject to change without notice

