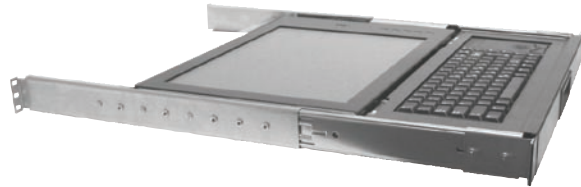


# 1U 17" LCD KVM CONSOLE



- Monitor and compact keyboard with trackball or touchpad in 1U of rack space.
- Mounted with included ball bearing slides which lock in the extended position.
- Monitor powers off preserving back light life when tilted down for sliding into the rack.
- Retainer and lock options to keep unit contained in the rack when not in use.
- Housed in rugged steel construction with a durable powder coat finish.
- Monitor surface protected by a clear unbreakable Lexan™ covering.

## DISPLAY SPECIFICATIONS

<b>Display Type:</b>	Active matrix TFT LCD	<b>Resolution:</b>	640 x 350
<b>Colors:</b>	16.7 million colors		640 x 480
<b>Contrast Ratio:</b>	RMM-3X7: 1000:1 typ.		800 x 600
<b>Brightness:</b>	RMM-3X7: 280 cd/m <sup>2</sup> typ.	<b>Display Area:</b>	1024 x 768
<b>Viewing Angle:</b>	Horizontal: 170°		1280 x 1024
	Vertical: 160°	<b>Horizontal Frequency:</b>	17" Diagonal
<b>Response Time:</b>	25ms.	<b>Vertical Frequency:</b>	31.5 to 80 KHz
			56 to 75 Hz.

## KEYBOARD AND MOUSE SPECIFICATIONS

<b>Rollover:</b>	Alpha N-key rollover.
<b>Auto repeat:</b>	Yes.
<b>Self Diagnostics:</b>	At power on and system reset.
<b>Data Buffer:</b>	All codes buffered before sending.
<b>Operating voltage:</b>	+5 VDC +/- 5%.
<b>Operating current:</b>	100 mA max.
<b>Trackball Size:</b>	16mm.
<b>Touchpad Size:</b>	2.1" X 1.25"
<b>Buttons:</b>	Left and Right, Scroll(touchpad).
<b>Interface:</b>	Keyboard: PS/2 or USB(U). Trackball: PS/2 or USB(U). Touchpad: PS/2 or USB(U).
<b>Compatibility:</b>	Windows operating systems. Specifications subject to change without notice.

We offer OEM and custom solutions.  
Contact us for additional information.



## GENERAL SPECIFICATIONS

<b>Dimensions:</b>	19.0" (W) x 1.75" (H) x 20.80" (D)
<b>Weight:</b>	25 lbs
<b>Power (TFT Display):</b>	90 - 260 VAC, 50/60 Hz. 60 Watts maximum
<b>On-Screen Controls:</b>	Brightness, Contrast, Horizontal & Vertical Position, Auto Adjust, OSD H & V Position, Load and Save Values
<b>Plug &amp; Play:</b>	DDC1 and DDC2B
<b>Temperature:</b>	Operating: 0°C to 50°C Storage: -20°C to 60°C
<b>Humidity:</b>	Operating: 10 to 85% RH (max)
<b>Input Signal (VGA):</b>	R.G.B. analog video, TTL H & V sync.
<b>Input Connector:</b>	Display: 15-pin mini D-Shell
<b>Colors Available:</b>	Black.

## MODEL NUMBER

RMM-3(X)7(X)

Cherry™ KB w/trackball = 1	Blank = Standard Front Panel
Std KB w/ trackball = 3	R = Front Panel + Retainer Screws
Std KB w/touchpad = 5	L = Front Panel + Lock
	C = Front panel + Lock + Retainer

**RECORTEC, INC.**

www.recortec.com  
sales@recortec.com

**1-800-729-7654**

3329 Kifer Road Tel: 408-928-1480  
Santa Clara, CA 95051 Fax: 408-928-1489