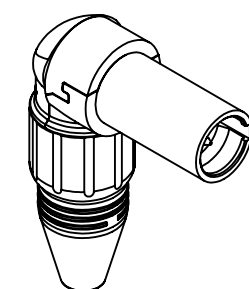
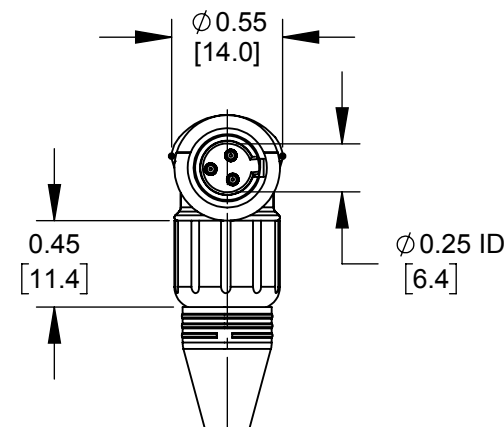
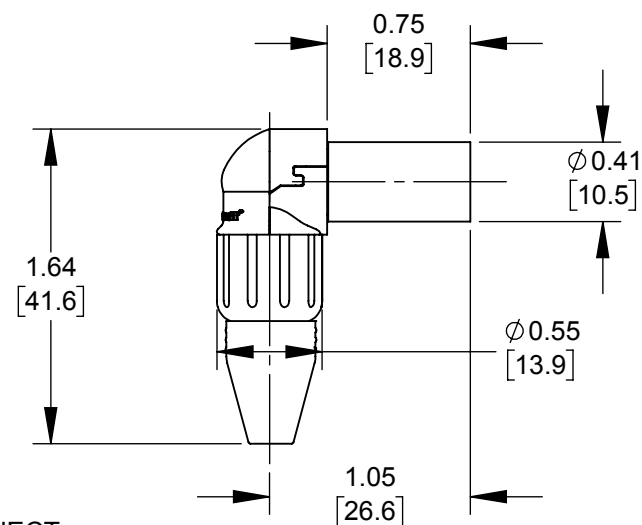
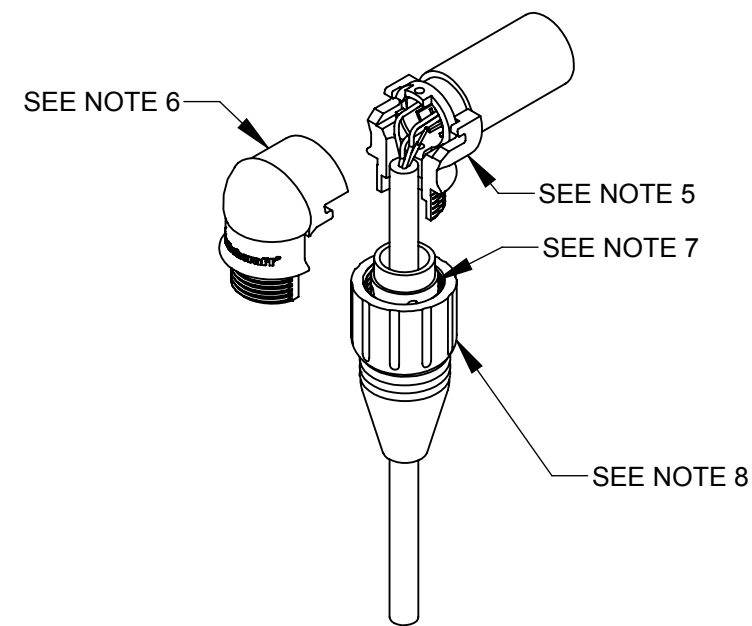
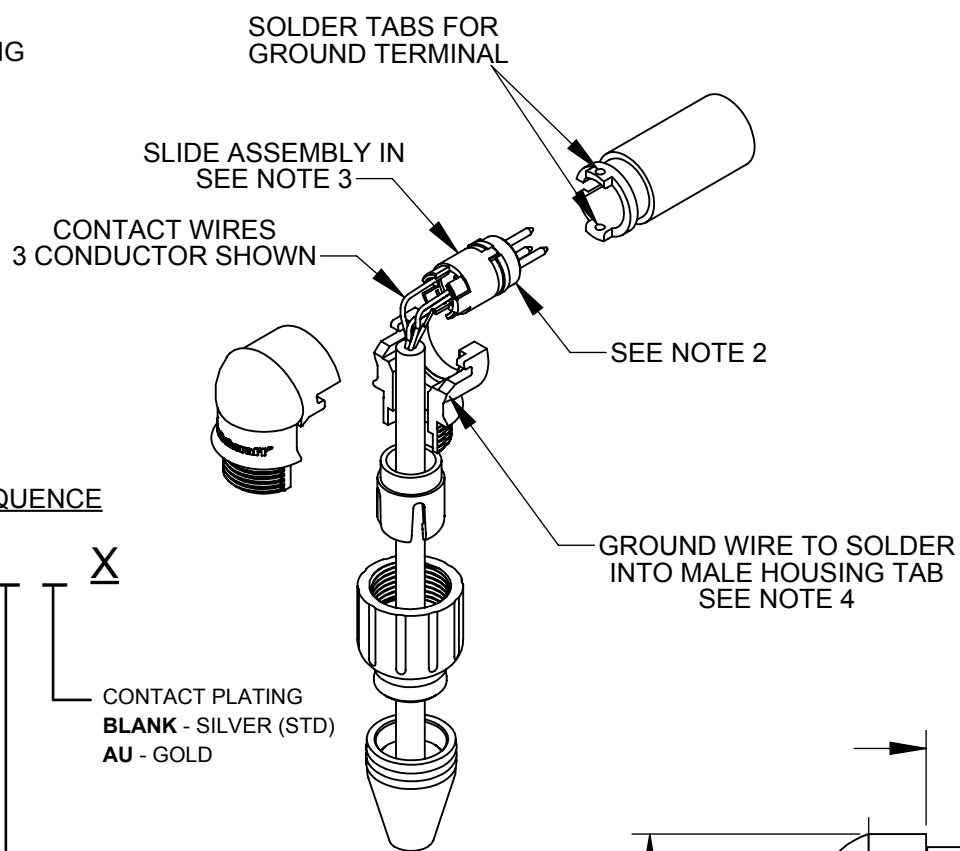


PART NUMBER SEQUENCE

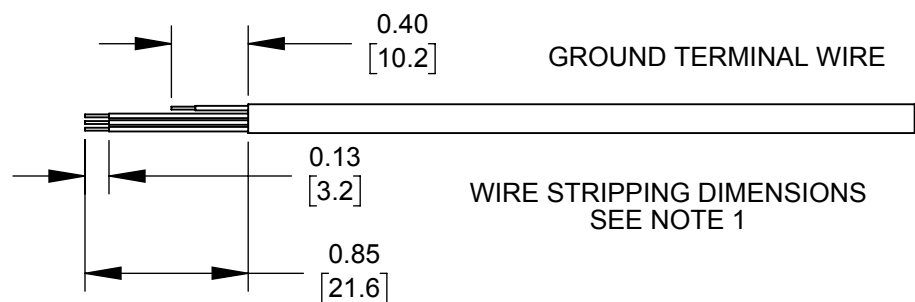
T	A	R	A	M	X
NO. OF CONTACTS				CONTACT PLATING	
3 - 3 CONTACTS				BLANK - SILVER (STD)	
4 - 4 CONTACTS				AU - GOLD	
5 - 5 CONTACTS				CABLE CLAMP SIZE (RANGE)	
6 - 6 CONTACTS				D - [0.110 - 0.135]	
7 - 7 CONTACTS				BLANK - [0.135 - 0.175]	
8 - 8 CONTACTS				L - [0.175 - 0.205]	

MALE



INSTRUCTIONS:

- 1) CUT THE WIRES ACCORDINGLY AS SHOWN ABOVE.
- 2) RUN IT THROUGH INSULATOR AND SOLDER THE CONTACT WIRES TO THE PLUG ASSEMBLY. CONNECT THE INSULATOR TO THE PLUG ASSEMBLY.
- 3) NOW SLIDE THE CONNECTED PLUG ASSEMBLY, INSULATOR INTO THE TINI QG HOUSING. MAKE SURE THAT THE PLUG ASSEMBLY IS BUTTED UP AGAINST THE FRONT OF THE TINI QG HOUSING.
- 4) SOLDER THE GROUND TERMINAL WIRE TO THE TINI QG HOUSINGS'S LOWER THRU HOLE AS SHOWN.
- 5) SLIDE THE BOTTOM PLASTIC HOUSING UP TOWARDS THE MALE HOUSING. THIS HOUSING CAN BE INSTALLED 90° ORIENTATED OTHER WAY IF PREFERRED.
- 6) DROP AND SLIDE THE TOP RIGHT ANGLE HOUSING INTO THE GROVE SUCH AS IT LATCHES WITH THE BOTTOM PLASTIC AND MALE HOUSING.
- 7) SLIDE THE CABLE CLAMP THROUGH THE CABLE INTO THE TOP/BOT HOUSINGS AS SHOWN.
- 8) SCREW THE PLUG HANDLE AND POP IN THE BOOT TO ASSEMBLE FULL PRODUCT.



REV	ECO NUMBER	DATE	BY	APVD
0C	ADDED DIMENSIONS LAYOUT CHANGED	09/17/18	AM	*
0B	EDITED NOTES	03/10/17	AM	*

UNLESS OTHERWISE SPECIFIED
1. ALL DIMENSIONS IN INCHES [mm]
- TWO PLACE DECIMALS ±0.02 [0.5]
- THREE PLACE DECIMALS ±0.005 [0.13]

DO NOT SCALE DRAWING

THIS DRAWING DESCRIBES A DESIGN CONSIDERED PROPRIETARY IN NATURE, DEVELOPED AND MANUFACTURED BY SWITCHCRAFT INC. AND IS RELEASED ON A CONFIDENTIAL BASIS FOR IDENTIFICATION PURPOSES ONLY.									
SIZE *		WIDTH *		MULT *		LBS/M *		TEMPER *	
FINISH *				MATERIAL *					
SPEC No. *				SPEC No. *					
FIRST USED ON *			SCALE 1:1		Switchcraft®				
DATE DRAWN		BY	CHKD	APVD					
01/03/17		AM	*	*	SHEET 1 OF 1				
NAME					PART No.				REV
TINI QG, MALE RA, RoHS					TARA_MX SERIES_CD				0C