

StretchPro-HD

Dynamic Real-Time Video Wall System



2x2 HDMI Video Wall Controller with 1080p resolution on each monitor

FEATURES

- 4 Screen Multilayout Digital Signage/Video Wall Controller
- 1 HDMI Input, 4 HDMI Outputs
- Internal EDID Tables
- Learns any EDID Table
- Resolutions up to 1080p (1920 x 1080)
- Output to 4 screens in clone, stretch horizontal or vertical modes
- Requires no additional hardware or software
- Multiple units can be linked for larger wall configurations
- DVI-D with adapter
- Supports IR, RS-232, and Ethernet control
- HDCP Compliant

APPLICATIONS

- Video Walls
- Digital Signage Displays
- Information Displays
- Command Centers
- Control Rooms
- Simulation Systems
- Restaurants and Clubs
- Houses of Worship
- Convention Facilities
- Theme Parks
- Resorts
- Casinos

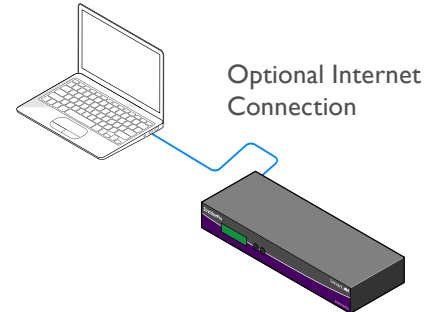


THE MOST FLEXIBLE VIDEO WALL SOLUTION

With the instant flexibility of SmartAVI's StretcherPro-HD, you can easily turn the walls of your business into a high tech video information center, at an affordable price. As you change the images on the fly your customers will appreciate this delightful experience. They will enjoy the outstanding quality and the mood it creates. While they're being entertained, the StretcherPro-HD lets you effortlessly program some advertising revenue into your bottom line.

The new StretcherPro-HD is capable of stretching any HD display over four screens, while maintaining any resolution up to 1920x1080 on each screen. This powerful new version stretches the video image in multiple ways including: Wall Mode (2x2), Dual Horizontal (2x1), Dual Vertical (1x2), or Clone the image (1:1).

There are times when system architects do look beyond a 2x2 video display – shopping mall centerpieces, airport displays, concert events, theme park attraction queues, or nightclub venues, for example. StretcherPro-HD is expandable and versatile enough to meet the needs of systems integrators – from modest jobs to more complicated designs.

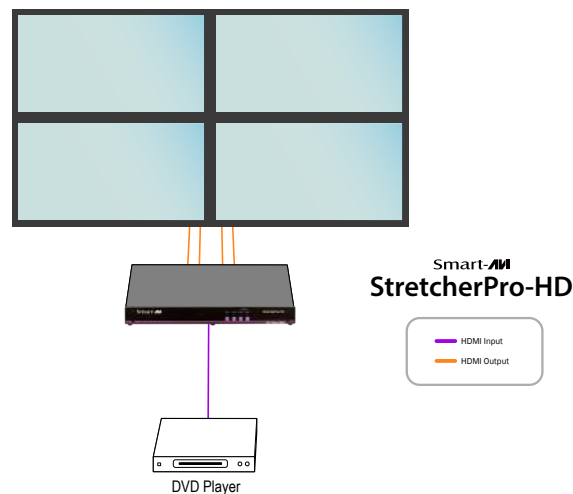


MULTIPLE LAYOUT OPTIONS

StretcherPro-HD supports any video input resolution from 800 x 600 up to 1920 x 1080 (high definition). The beauty of this unit is that regardless of the scaling – from one to all four screens – StretcherPro-HD maintains the original resolution quality of the image on all monitors, delivering a crisp, perfect image to your audience every time.

SmartAVI's StretcherPro-HD is the perfect entry-level display wall solution that has been aggressively priced within the market, without the complexity of external computer control or setup.

APPLICATION DIAGRAM



ACCESSORIES

Optional Internet Connection



Attaching a DVI-D Source



An inexpensive and passive HDMI to DVI-D adapter allows the connection of DVI-D sources.

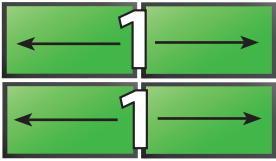
AVAILABLE CONFIGURATIONS



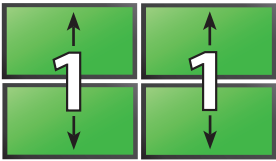
VIDEO WALL MODE: Users can project the input image across four HD screens (2x2 configuration). With screen resolution of 1920x1080, users can create a stunning 4K resolution video wall display.



CLONE MODE: Users can route the input image to each display individually, creating a simple and effective digital signage display.



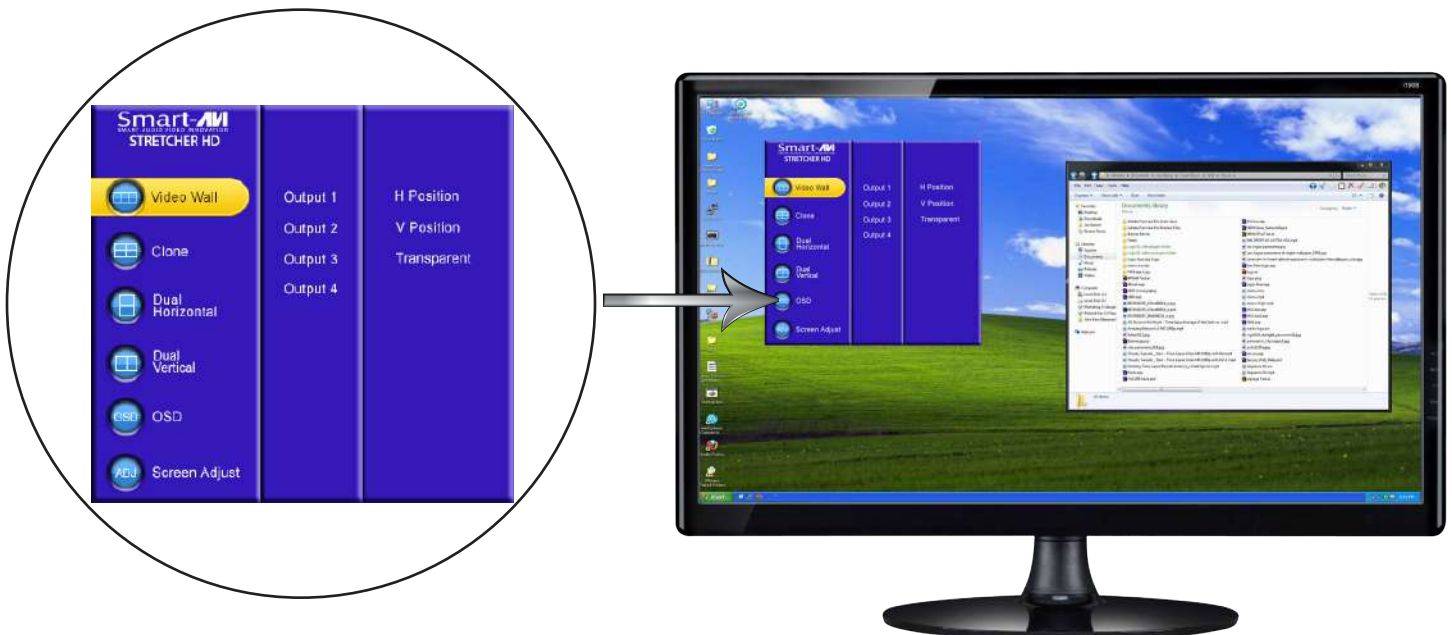
DUAL HORIZONTAL: – Users can route the input image over two horizontally arranged screens two times over, creating a unique and flexible horizontal display option.



DUAL VERTICAL: Users can route the input image over two vertically arranged screens two times over, creating a unique and flexible vertical display option.

ON SCREEN DISPLAY

All of the StretcherPro-HD's functions are controlled through On Screen Display (OSD). OSD gives users great flexibility and ease of use when looking to manage their video wall. By simply selecting from the SmartAVI menu, configuring the StretcherPro-HD on the fly is no hassle at all, with no additional screens or computers required to make changes. Users can also choose to operate the OSD through IR remote. RS-232 control is supported, as well.



SPECIFICATIONS



StretcherPro-HD Front



StretcherPro-HD Back

VIDEO

Video Bandwidth	Single-link 340MHz [10.2Gbps]
Resolution HDTV	Up to 1080p (1920x1080 @ 60Hz)
PC Resolution	Up to 1080p (1920x1080 @ 60Hz)
Input Video Signal	1.2 volts
Input DDC Signal	5 volts
Single Link Range	1080p
Format	HDMI 1.4
DVI Compliance	Single-link DVI-D 2.0
HDCP Compliance	1.0/2.0
Video Bandwidth	Single-link 340MHz [10.2Gbps]
Input Interface	(1) HDMI
Output Interface	(4) HDMI
Connector	Type A [19-pin female]

CONTROL

Front Panel	Buttons (tactile switches)
RS-232	DB9 (female)
Remote	IR (Infrared)
TCP-IP	Ethernet Control

POWER

Requirements	Internal 100-240 VAC
Power Supply Approvals	UL, CE, CSA, CEC, RoHS

MECHANICAL

Height	1.875 in.
Width	17 in.
Depth	10.75 in.
Weight	4.4 lbs.

ORDERING INFORMATION

Part No.	Description
STRP-HDS	StretcherPro-HD 2x2 Multi-Layout Video Wall Controller. Includes: [STRP-HD, RMT-4KWL, SM-EYE-NY, EN-QKVM-EAR-P and CCPWR06]



Designed and Manufactured in the USA

www.smartavi.com

Tel: 800.AVI.2131 • 818.503.6200 • 11651
Vanowen St. North Hollywood, CA. 91605

Smart-AVI
SMART AUDIO VIDEO INNOVATION