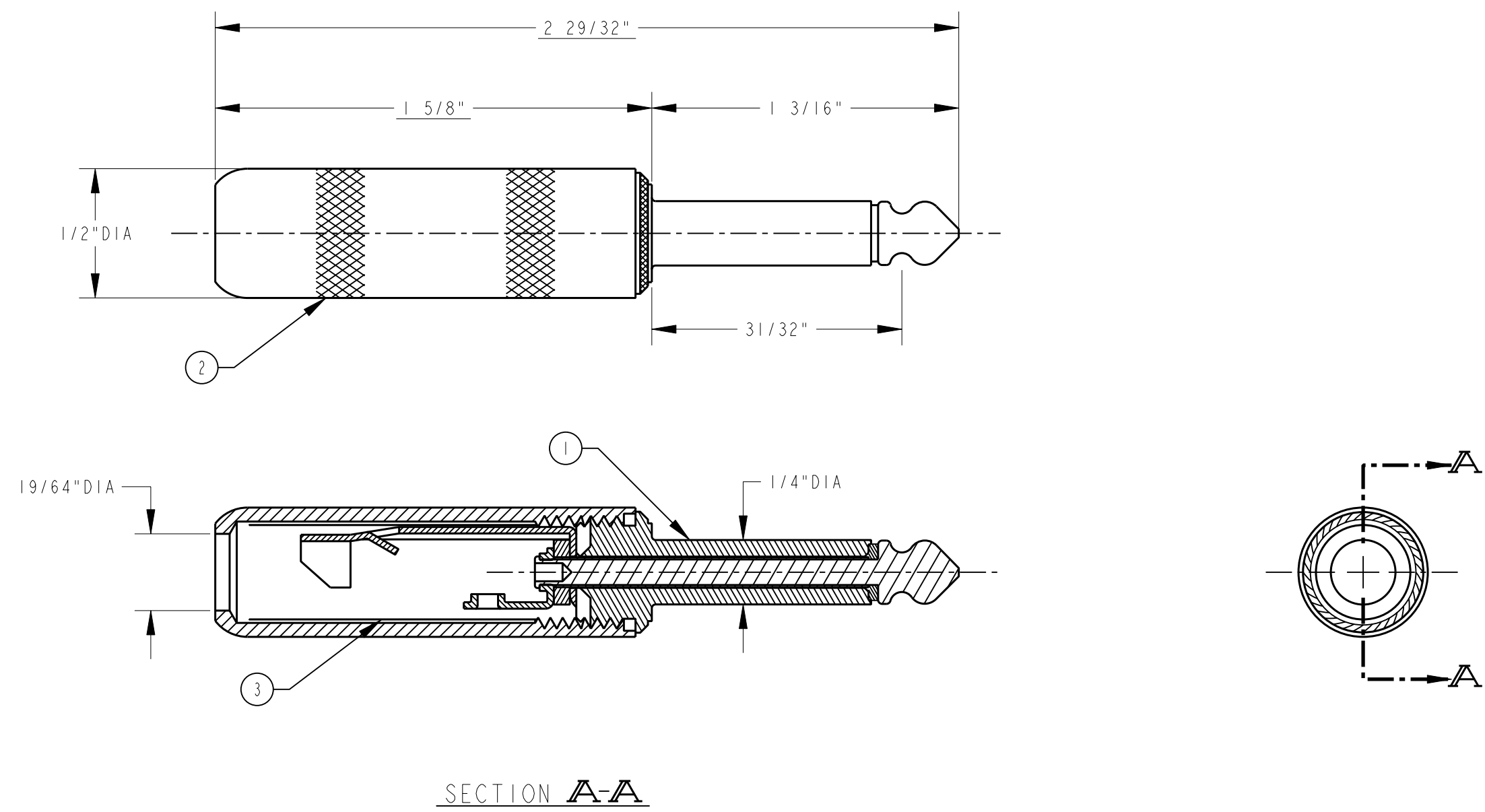


3	TUBING	1
2	HANDLE	1
1	PLUG ASSEMBLY	1
ITEM	DESCRIPTION	REQ'D
STOCK LIST		



**MATERIALS:**

- TIP AND BODY-BRASS-NICKEL PLATE.
- TERMINALS-BRASS-ELECTRO TIN PLATED
- INSULATORS-PHENOLIC
- HANDLE-BRASS-NICKEL PLATE
- TORQUE = HOLDING THE PLUG SLEEVE RIGID, A TWISTING FORCE OF 1 POUND-INCH SHALL BE APPLIED TO THE TIP, IT SHOULD NOT ROTATE OR BECOME LOOSE.

CUSTOMER DRAWING  
 CAD/CAM DWG. NO.  
 280\_CD  
 SHEET 1 OF 1

REVISIONS D ECO #19700 3-28-95 RC GHJ B CAD REDRAW WAS REV. A ECO #16155 3-20-92 ES GHJ ISSUE CHANGE NO. DATE BY APP'D					☆ STAR SYMBOL DENOTES CRITICAL DIMENSION, SEE S/C ENGINEERING STANDARD ES-0001	THIS DRAWING DESCRIBES A DESIGN CONSIDERED PROPRIETARY IN NATURE, DEVELOPED AND MANUFACTURED BY SWITCHCRAFT INC. AND IS RELEASED ON A CONFIDENTIAL BASIS FOR IDENTIFICATION PURPOSE ONLY.													
						UNLESS OTHERWISE SPECIFIED					SIZE	WIDTH	MULT	LBS./M	TEMPER	FINISH SPEC. NO. FIRST USED ON DATE DRAWN 6-17-64 BY JRT CHK'D RB 7-15-64 APP'D EB 1-28-88			
					1. ALL DIMENSIONS IN INCHES 2. DECIMAL DIMENSIONS ±.005 3. FRACTIONAL DIMENSIONS ±1/64 4. ANGLES ±1/2° 5. ALL DIA'S CONCENTRIC WITHIN .005 T.I.R. 6. REMOVE ALL BURRS 7. MAKE NO DIMENSIONAL ALLOWANCES FOR APPLIED FINISHES, I.E., PLATING, PAINTING, ETC. 8. HOLES ON THE SAME CENTERLINE MUST BE ALIGNED WITHIN ±.002					MATERIAL SPEC. NO. <b>Switchcraft®</b>					NAME 2 CONDUCTOR PHONE PLUG PART NO. 280 ISSUE D				
					DO NOT SCALE DRAWING														