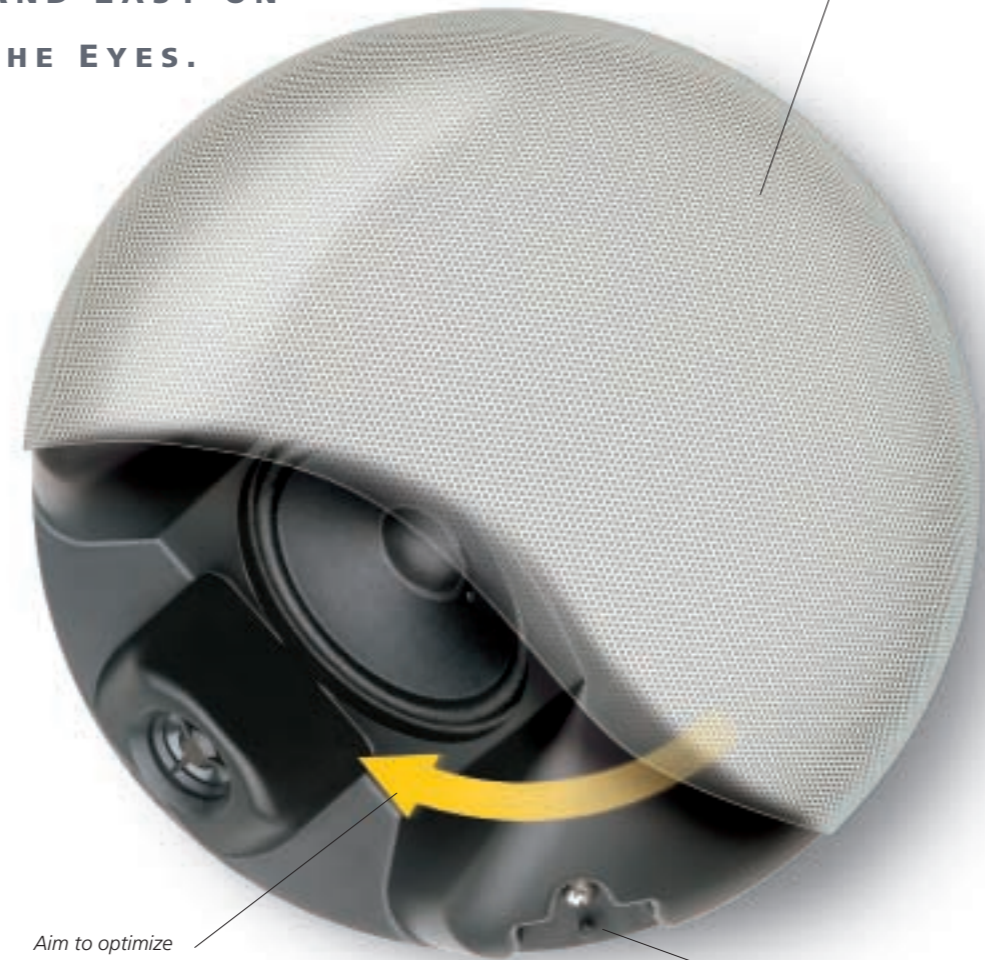


SPECIFICATIONS

| | |
|---------------------------------------|--|
| Enclosure Type | H-1, H-2, H-3: Sealed, Two-way HB-1: Port Radiation, Acoustic Bandpass |
| Speaker Components | H-1: 3" x 2" Cone Woofer (Neodymium Magnet) H-2: 4" Cone Woofer (Neodymium Magnet) H-3: Two 4" Cone Woofers (Neodymium Magnet) H-1, H-2, H-3: 1" Balanced-Dome Tweeter (H-1 and H-2 are Ferrofluid Cooled) HB-1: 8" Ferrite Magnet, Urethane Surround |
| Impedance | H-1, H-2: Direct 4 Ω H-3, HB-1: Direct 8 Ω H-1, H-2, H-3: Transformer: 16 Ω H-1, H-2: 70.7 V Line: 12 W (420 Ω), 6 W (830 Ω), 3 W (1.7k Ω), 1.5 W (3.3k Ω) 100 V Line: 12 W (830 Ω), 6 W (1.7k Ω), 3 W (3.3k Ω) H-3: 70.0 V Line: 30 W (170 Ω), 15 W (330 Ω), 7.5 W (670 Ω), 3.75 W (1.3k Ω) 100 V Line: 30 W (330 Ω), 15 W (670k Ω), 7.5 W (1.3k Ω) |
| Sensitivity (1 W/1 m, 1/2 Space) | H-1: 85 dB SBL H-2: 88 dB SPL H-3: 89 dB SPL HB-1: 91 dB SPL |
| Power Handling Cont. Program | H-1: 90 W H-2: 120 W H-3: 150 W HB-1: 240 W |
| Cont. Pink Noise, 24 Hrs | H-1: 30 W H-2: 40 W H-3: 50 W HB-1: 80 W |
| Transformer (16 Ω, 70 V, 100 V Line): | H-1: 12 W H-2: 12 W H-3: 30 W |
| Frequency Response | H-1: 120 Hz to 20 kHz H-2: 100 Hz to 20 kHz H-3: 100 Hz to 20 kHz (-10 dB, 1/2 Space) HB-1: 45 Hz to 200 Hz (-10 dB, 1/2 Space) |
| Crossover Frequency | H-1, H-2: 5 kHz H-3: 4 kHz (LPF: -12 dB/octave, HPF: -18 dB/octave) |
| Dimensions (W x H x D) | H-1: 12.28" x 4.96" x 3.54" (312 mm x 126 mm x 90 mm) H-2: 10.55" dia. x 4.37" (288 mm x 111 mm) H-3: 11.6" x 12.5" x 5.1" (295 mm x 318 mm x 129 mm) HB-1: 16.93" x 21.42" x 5.32" (430 mm x 544 mm x 135 mm) HB-1 Cutout size: 14.2" x 18.9" (360 mm x 480 mm), |
| Weight | H-1: 3.31 lbs. (1.5 kg) H-2: 4.63 lbs. (2.1 kg) H-3: 7.3 lbs. (3.3 kg) HB-1: 24.25 lbs. (11 kg) |

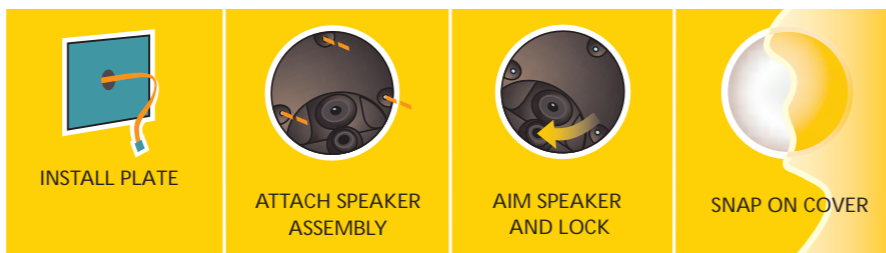
**EASY TO INSTALL.
EASY TO AIM.
AND EASY ON
THE EYES.**



Paint grille
to match
your interior.

Aim to optimize
delivery of
paging and BGM.

Install using
standard electrical
gang boxes.



LEGENDARY RELIABILITY

Ask anyone in commercial audio. They'll tell you TOA has an unmatched reputation for building rugged, reliable and innovative products.

One look at the new

H Series speakers and you'll see why.

TOA speakers are engineered tough. They're assembled with the highest quality components, then tested and retested to ensure an out-of-the-box failure rate that's virtually zero.



TOA ELECTRONICS, INC.
TEL: 800-733-7088
FAX: 800-733-9766

TOA CANADA CORPORATION
TEL: 905-564-3570
FAX: 905-564-3569

www.toaelectronics.com

UK: TOA CORPORATION PLC
TEL: 44-20-8337-2573 FAX: 44-20-8337-2632

GERMANY: TOA ELECTRONIC EUROPE GMBH
TEL: 49-40-2517190 FAX: 49-40-25171998

JAPAN: TOA CORPORATION
TEL: 81-78-303-5610 FAX: 81-78-303-5684

TOA ELECTRONICS TAIWAN CORPORATION
TEL: 886-2-2543-3601 FAX: 886-2-2562-4127

TOA (HONG KONG) LTD.
TEL: 852-2782-0311 FAX: 852-2384-4621

INDONESIA: P.T. TOA-GALVA INDUSTRIES
TEL: 62-21-8740809 FAX: 62-21-8744828

The **H** Series

**INTERIOR DESIGN
SPEAKERS
THAT HARMONIZE
WITH ANY
ENVIRONMENT**



**DIRECTIONAL SOUND
OR DESIGN AESTHETICS?
NOW YOU CAN HAVE BOTH!**

THE BUILDING'S DESIGN calls for speakers that can be aimed, but the building's architect is balking at ugly boxes and brackets. TOA has a solution. With our new H Series, we've taken a whole new approach to mounting speakers—we eliminated the brackets.

Our H-1 and H-2 are designed to be mounted into the wall or ceiling, then aimed to deliver quality sound exactly where you need it. And our new HB-1 subwoofer hides neatly between standard 16-inch-on-center wall studs. All H Series grilles are attractive, simple, and uncluttered, and can be painted to match—and disappear into—any architecture.

Does your installation require broad coverage? The H-3 *Wide Dispersion Model* offers 140° of horizontal coverage and mounts with a standard two-gang electrical box.

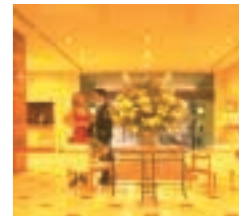


H - 3

HB - 1

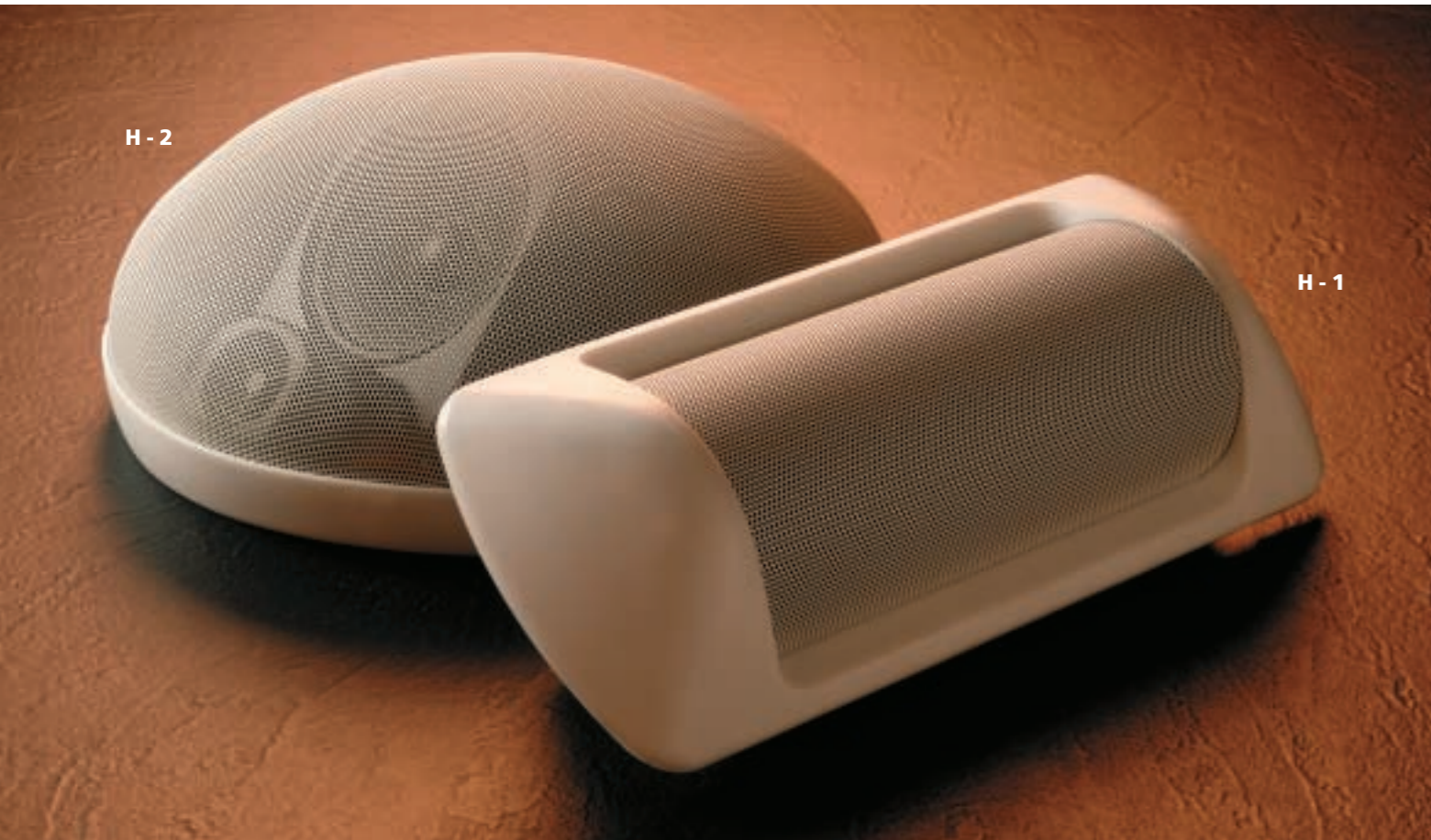
"Where can I hide the subwoofer?" With the HB-1, the answer is easy. With its clean, paintable grille it really does disappear into any decor. Need wide dispersion? Choose the H-3. It offers 140° horizontal coverage, plus that awesome TOA sound.

In some interiors, you just can't get away with hanging exposed "box" speakers on wall-mount brackets. With TOA's H Series speakers, you don't have to.



**H SERIES
FEATURES
AT A GLANCE**

- Sleek and attractive, no brackets required
- Easy installation with standard electrical gang boxes
- Wall or ceiling mount
- H-1 and H-2 Speakers rotate within housings for flexible aiming
- Both Narrow and Wide Dispersion models for controlling sound coverage
- The H-1, H-2 and H-3 two-way designs feature balanced dome tweeters and Neodymium magnet cone woofers
- HB-1 features an 8" woofer with Ferrite magnet
- Paintable grilles blend into architecture
- Weatherproof models available
- 3 Year Warranty



H - 2

H - 1

Offices, restaurants, stores, atriums, foyers, hallways, pew backs: H Series speakers are ideal for any environment where *both* sound quality *and* appearance are critical.

Balanced-dome tweeters and neodymium magnet cone woofers help the H-1, H-2 and H-3 deliver the crisp highs and clean low-end response you've come to expect from TOA.

Semi-flush mounting virtually eliminates the out-of-phase sound reflections that plague bracket-

mounted models. And all H Series speakers are optimized to take advantage of the low frequency boost that develops between 200 and 300 Hz due to half-space and quarter-space loading.

Simple to install. Easy to aim. Great quality sound. And a look that will please architects and designers everywhere. Call today for data sheets, or visit us at www.toaelectronics.com.

H Series EQ Modules are available for TOA 900 Series amplifiers. Please contact your nearest TOA dealer for details.



Form vs. Function. They're no longer in contention. TOA delivers both in these elegant H Series directional speakers.