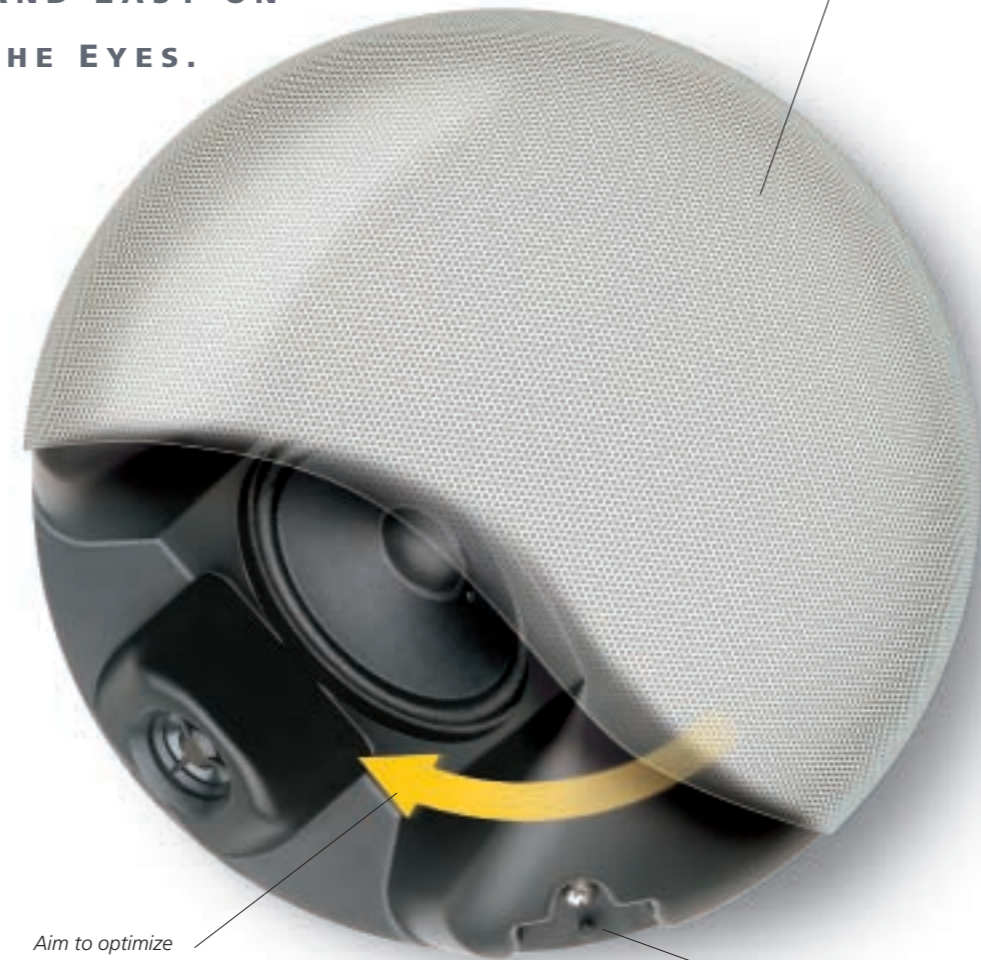


## SPECIFICATIONS

Enclosure Type	H-1, H-2, H-3: Sealed, Two-way HB-1: Port Radiation, Acoustic Bandpass
Speaker Components	H-1: 3" x 2" Cone Woofer (Neodymium Magnet) H-2: 4" Cone Woofer (Neodymium Magnet) H-3: Two 4" Cone Woofers (Neodymium Magnet) H-1, H-2, H-3: 1" Balanced-Dome Tweeter (H-1 and H-2 are Ferrofluid Cooled) HB-1: 8" Ferrite Magnet, Urethane Surround
Impedance	H-1, H-2: Direct 4 Ω H-3, HB-1: Direct 8 Ω H-1, H-2, H-3: Transformer: 16 Ω H-1, H-2: 70.7 V Line: 12 W (420 Ω), 6 W (830 Ω), 3 W (1.7k Ω), 1.5 W (3.3k Ω) 100 V Line: 12 W (830 Ω), 6 W (1.7k Ω), 3 W (3.3k Ω) H-3: 70.0 V Line: 30 W (170 Ω), 15 W (330 Ω), 7.5 W (670 Ω), 3.75 W (1.3k Ω) 100 V Line: 30 W (330 Ω), 15 W (670k Ω), 7.5 W (1.3k Ω)
Sensitivity (1 W/1 m, 1/2 Space)	H-1: 85 dB SBL H-2: 88 dB SPL H-3: 89 dB SPL HB-1: 91 dB SPL
Power Handling Cont. Program	H-1: 90 W H-2: 120 W H-3: 150 W HB-1: 240 W
Cont. Pink Noise, 24 Hrs	H-1: 30 W H-2: 40 W H-3: 50 W HB-1: 80 W
Transformer (16 Ω, 70 V, 100 V Line):	H-1: 12 W H-2: 12 W H-3: 30 W
Frequency Response	H-1: 120 Hz to 20 kHz H-2: 100 Hz to 20 kHz H-3: 100 Hz to 20 kHz (-10 dB, 1/2 Space) HB-1: 45 Hz to 200 Hz (-10 dB, 1/2 Space)
Crossover Frequency	H-1, H-2: 5 kHz H-3: 4 kHz (LPF: -12 dB/octave, HPF: -18 dB/octave)
Dimensions (W x H x D)	H-1: 12.28" x 4.96" x 3.54" (312 mm x 126 mm x 90 mm) H-2: 10.55" dia. x 4.37" (288 mm x 111 mm) H-3: 11.6" x 12.5" x 5.1" (295 mm x 318 mm x 129 mm) HB-1: 16.93" x 21.42" x 5.32" (430 mm x 544 mm x 135 mm) HB-1 Cutout size: 14.2" x 18.9" (360 mm x 480 mm),
Weight	H-1: 3.31 lbs. (1.5 kg) H-2: 4.63 lbs. (2.1 kg) H-3: 7.3 lbs. (3.3 kg) HB-1: 24.25 lbs. (11 kg)

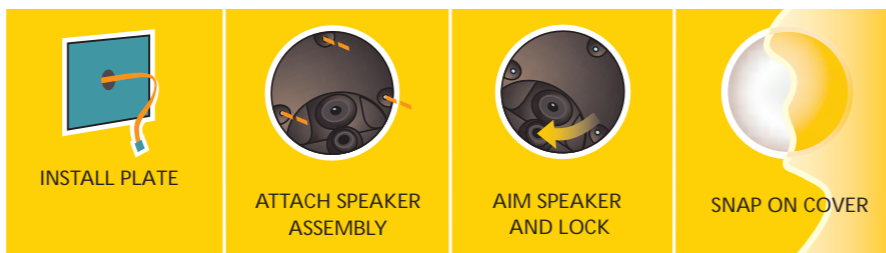
**EASY TO INSTALL.  
EASY TO AIM.  
AND EASY ON  
THE EYES.**



Paint grille  
to match  
your interior.

Aim to optimize  
delivery of  
paging and BGM.

Install using  
standard electrical  
gang boxes.



## LEGENDARY RELIABILITY

Ask anyone in commercial audio. They'll tell you TOA has an unmatched reputation for building rugged, reliable and innovative products.

One look at the new H Series speakers and you'll see why.

TOA speakers are engineered tough. They're assembled with the highest quality components, then tested and retested to ensure an out-of-the-box failure rate that's virtually zero.



**TOA ELECTRONICS, INC.**  
TEL: 800-733-7088  
FAX: 800-733-9766

**TOA CANADA CORPORATION**  
TEL: 905-564-3570  
FAX: 905-564-3569

[www.toaelectronics.com](http://www.toaelectronics.com)

**UK: TOA CORPORATION PLC**  
TEL: 44-20-8337-2573 FAX: 44-20-8337-2632

**GERMANY: TOA ELECTRONIC EUROPE GMBH**  
TEL: 49-40-2517190 FAX: 49-40-25171998

**JAPAN: TOA CORPORATION**  
TEL: 81-78-303-5610 FAX: 81-78-303-5684

**TOA ELECTRONICS TAIWAN CORPORATION**  
TEL: 886-2-2543-3601 FAX: 886-2-2562-4127

**TOA (HONG KONG) LTD.**  
TEL: 852-2782-0311 FAX: 852-2384-4621

**INDONESIA: P.T. TOA-GALVA INDUSTRIES**  
TEL: 62-21-8740809 FAX: 62-21-8744828

## The **H** Series

**INTERIOR DESIGN  
SPEAKERS  
THAT HARMONIZE  
WITH ANY  
ENVIRONMENT**



**DIRECTIONAL SOUND  
OR DESIGN AESTHETICS?  
NOW YOU CAN HAVE BOTH!**

THE BUILDING'S DESIGN calls for speakers that can be aimed, but the building's architect is balking at ugly boxes and brackets. TOA has a solution. With our new H Series, we've taken a whole new approach to mounting speakers—we eliminated the brackets.

Our H-1 and H-2 are designed to be mounted into the wall or ceiling, then aimed to deliver quality sound exactly where you need it. And our new HB-1 subwoofer hides neatly between standard 16-inch-on-center wall studs. All H Series grilles are attractive, simple, and uncluttered, and can be painted to match—and disappear into—any architecture.

Does your installation require broad coverage? The H-3 *Wide Dispersion Model* offers 140° of horizontal coverage and mounts with a standard two-gang electrical box.



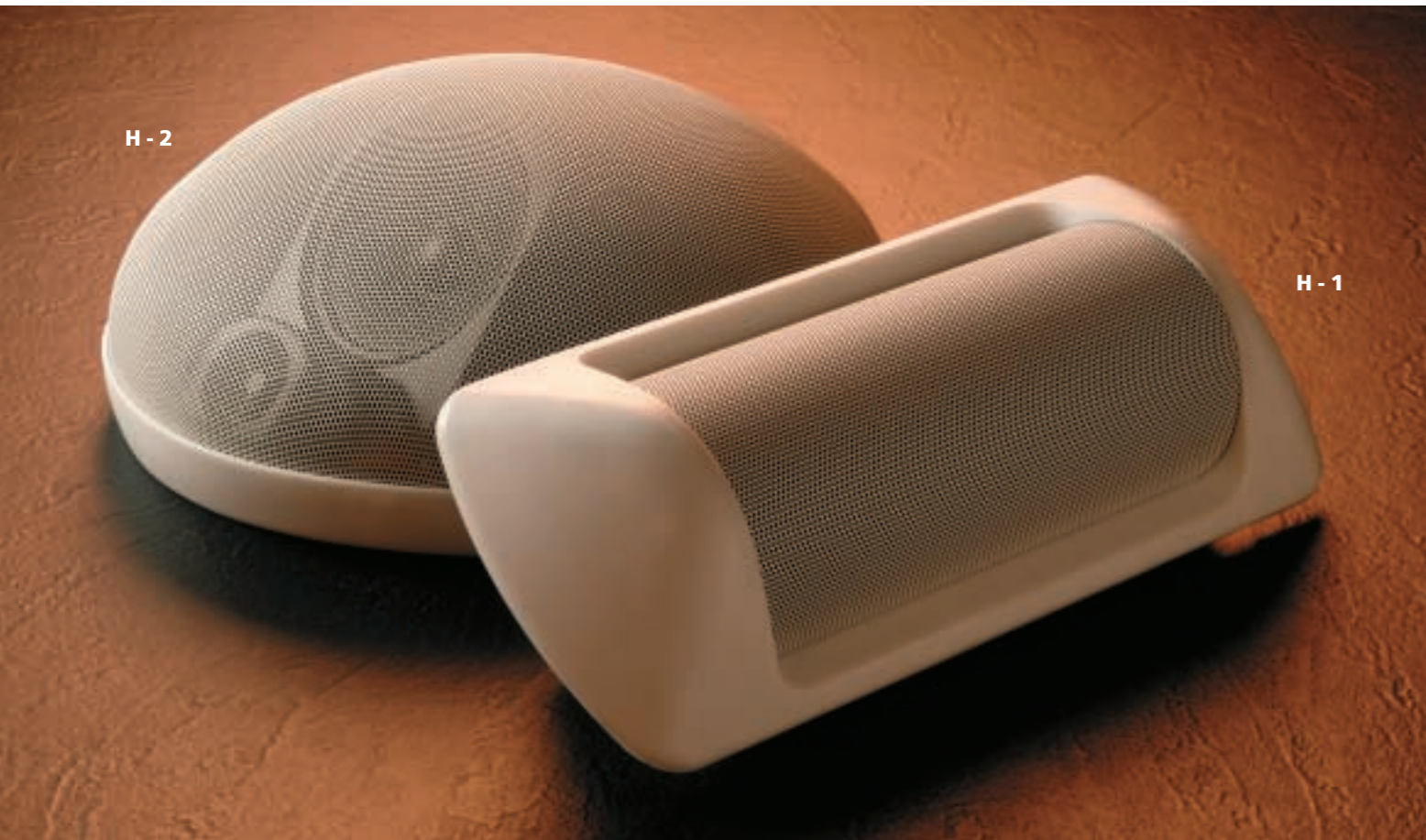
*"Where can I hide the subwoofer?" With the HB-1, the answer is easy. With its clean, paintable grille it really does disappear into any decor. Need wide dispersion? Choose the H-3. It offers 140° horizontal coverage, plus that awesome TOA sound.*

*In some interiors, you just can't get away with hanging exposed "box" speakers on wall-mount brackets. With TOA's H Series speakers, you don't have to.*



**H SERIES  
FEATURES  
AT A GLANCE**

- Sleek and attractive, no brackets required
- Easy installation with standard electrical gang boxes
- Wall or ceiling mount
- H-1 and H-2 Speakers rotate within housings for flexible aiming
- Both Narrow and Wide Dispersion models for controlling sound coverage
- The H-1, H-2 and H-3 two-way designs feature balanced dome tweeters and Neodymium magnet cone woofers
- HB-1 features an 8" woofer with Ferrite magnet
- Paintable grilles blend into architecture
- Weatherproof models available
- 3 Year Warranty



Offices, restaurants, stores, atriums, foyers, hallways, pew backs: H Series speakers are ideal for any environment where *both* sound quality *and* appearance are critical.

Balanced-dome tweeters and neodymium magnet cone woofers help the H-1, H-2 and H-3 deliver the crisp highs and clean low-end response you've come to expect from TOA.

Semi-flush mounting virtually eliminates the out-of-phase sound reflections that plague bracket-

mounted models. And all H Series speakers are optimized to take advantage of the low frequency boost that develops between 200 and 300 Hz due to half-space and quarter-space loading.

Simple to install. Easy to aim. Great quality sound. And a look that will please architects and designers everywhere. Call today for data sheets, or visit us at [www.toaelectronics.com](http://www.toaelectronics.com).

*H Series EQ Modules are available for TOA 900 Series amplifiers. Please contact your nearest TOA dealer for details.*



*Form vs. Function. They're no longer in contention. TOA delivers both in these elegant H Series directional speakers.*