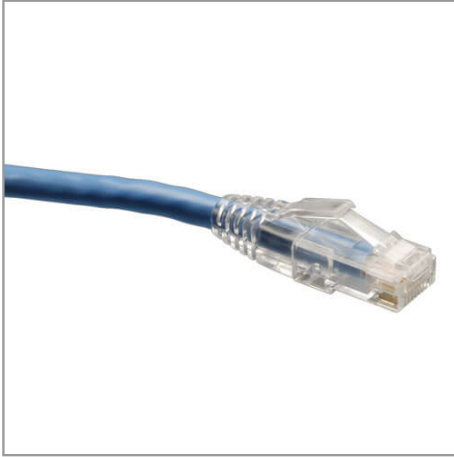




**Tripp Lite**  
1111 W. 35th Street  
Chicago, IL 60609 USA  
Telephone: 773.869.1234  
www.tripplite.com

## Cat6 Gigabit Solid Conductor Snagless Patch Cable (RJ45 M/M) - Blue, 50-ft.

MODEL NUMBER: **N202-050-BL**



### Description

Tripp Lite Solid Conductor 4-pair Cat6 patch cables are ideal for long Ethernet patch cable runs, as well as for use with Tripp Lite's HDMI over Cat6 Audio/Video products. Solid conductor wire has a lower DC resistance, allowing signals to run farther and stronger than stranded conductor patch cables. Unique, snagless boot protects the RJ45 locking tab during cable pulls, yet easily disconnects from attached equipment.

### Features

- 50ft Blue Cat6 Solid Conductor patch cable
- Meets Category 6 cabling standards
- Solid Conductor 4 Pair Cable for long distance patch runs
- Drastically reduce impedance and structural return loss compared to Stranded Conductor patch cables
- High-quality copper wire and a shortened body plug design
- Snagless boots protect the locking tabs on the RJ45 connectors from being damaged during installation

## Specifications

OVERVIEW	
UPC Code	037332157409
INPUT	
Cable Length (ft.)	50
Cable Length (m)	15.2
Cable Length (in.)	600

### Highlights

- Meets Category 6 cabling standards
- Solid Conductor 4 Pair Cable for long distance patch runs
- Drastically reduce impedance and structural return loss compared to Stranded Conductor patch cables
- High-quality copper wire and a shortened body plug design
- Snagless boots protect the locking tabs on the RJ45 connectors from being damaged during installation

### System Requirements

<p> </p>

### Package Includes

N202-050-BL, 50ft Blue Cat6 Solid Conductor Patch Cable



**Tripp Lite**  
1111 W. 35th Street  
Chicago, IL 60609 USA  
Telephone: 773.869.1234  
[www.tripplite.com](http://www.tripplite.com)

Cable Length (cm)	1524
<b>PHYSICAL</b>	
Wire Gauge (AWG)	24
Shipping Dimensions (hwd / in.)	12.00 x 10.00 x 0.50
Shipping Dimensions (hwd / cm)	30.48 x 25.40 x 1.27
Shipping Weight (lbs.)	1.27
Shipping Weight (kg)	0.58
Color	Blue
Wire Type	Solid
Snagless Connector	Yes
Cable Shielding	UTP
<b>CONNECTIONS</b>	
Side A - Connector 1	RJ45 (MALE)
Side B - Connector 1	RJ45 (MALE)
<b>FEATURES &amp; SPECIFICATIONS</b>	
Technology	Cat6
<b>CERTIFICATIONS</b>	
Certifications	RoHS Compliant
<b>WARRANTY</b>	
Product Warranty Period (Worldwide)	Lifetime limited warranty

© 2019 Tripp Lite. All rights reserved. All product and company names are trademarks or registered trademarks of their respective holders. Use of them does not imply any affiliation with or endorsement by them. Tripp Lite has a policy of continuous improvement. Specifications are subject to change without notice. Tripp Lite uses primary and third-party agencies to test its products for compliance with standards. See a list of Tripp Lite's testing agencies: <https://www.tripplite.com/products/product-certification-agencies>